

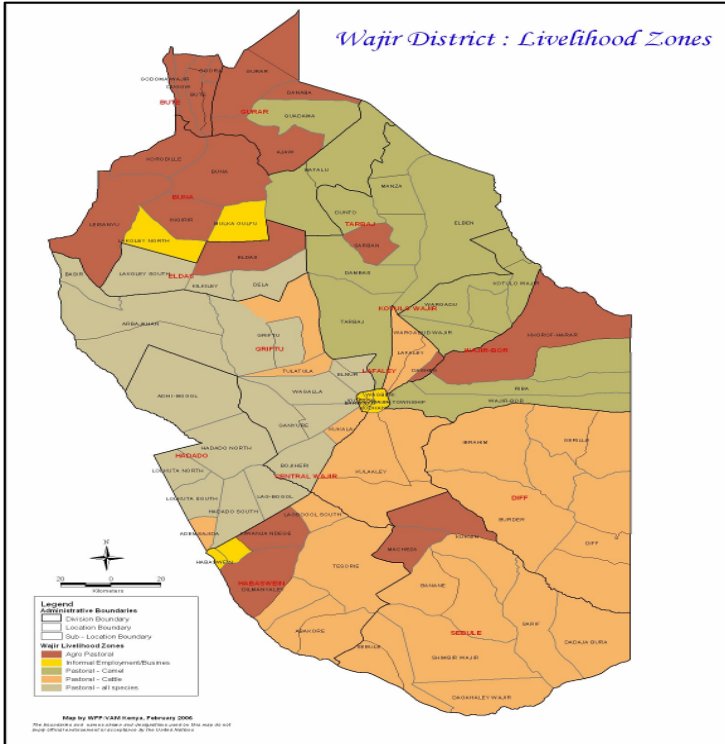


**OFFICE OF THE PRIME MINISTER
MINISTRY OF STATE FOR THE DEVELOPMENT OF NORTHERN KENYA AND OTHER ARID LANDS
ARID LANDS RESOURCE MANAGEMENT PROJECT II**

DROUGHT MONITORING BULLETIN, JUNE 2009

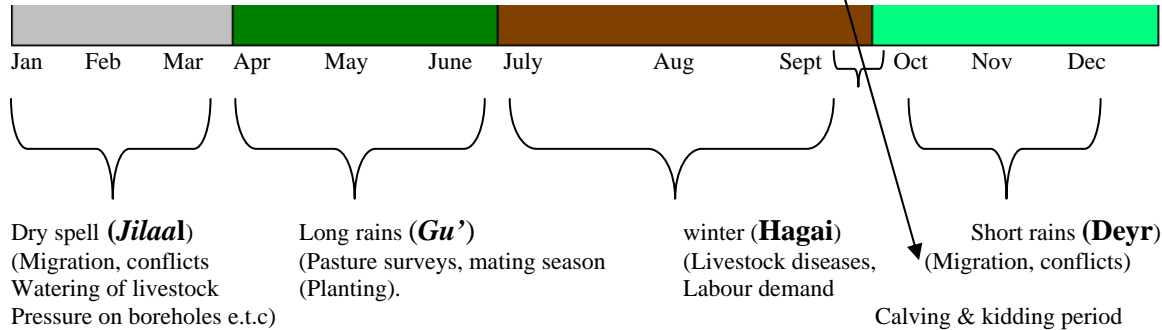
Wajir District

Warning Stages



Livelihood Zone	Warning Stage	Trend
Pastoral – All Species	Alarm	Worsening
Pastoral – Cattle	Alarm	Worsening
Pastoral – Camel	Alarm	Worsening
Agro – Pastoral	Alarm	Worsening
Informal Employment/Business	Alarm	Worsening

Seasonal Calendar



Situation overview

- Availability of water diminished since all the pans dried up, the yield of shallow wells reduced in quantity and over 46 centres were being water trucked including Ogoralle,

Guna, Majabow, Belatul Amin and Burmayo in Wajir East, Lolkuta North, Hadado, Basir, Anole, Adan Awale, Bojiheri, Barmisha in Wajir West, Shimbirbul, Handaki, Qanjara and Ibrahim-urey in Wajir South, Qudama, lekole north and south, Ingirir, Lesayu in Wajir North, Wara, Ajawa, Dugo, Arbaqeransu, Iresteno, ingirir, Ado, Qanjara, Basanija, Milsaded, Hote, Sitawario, Arbaqerasu, Qajaja 1&2, Gunana, Ogorale, Haragal, Elyunis, Majabow, Fini, Gerille, Handaki and Hadado.

- Livestock body condition continued deteriorating, especially in cattle and sheep while weak animals are zero grazed at settlements with supplementary feeds due to poor body weakness, increase in trekking distance in search of pastures and water have increased further to 45-55 km.
- Livestock prices continued to deteriorate in the local market as the dry spell progresses compounded with low demand with fear of livestock loss thus reducing herd sizes.
- Morbidity and mortality of diseases in the district remained as malaria, URTI, intestinal worms, malnutrition and cases of diarrhoeal diseases were reported district wide, increased in dermatitis have also been reported due to acute shortage of water especially in Adan Awale, Lolkuta north, Shimbirbul, Qudama and Wargadud.
- The availability and supply of milk continued to decline as the prices of milk at the local market have increased and deteriorated with average price of Ksh 80-100 per 750mm bottle of milk. The increase in price was as the result of pasture and browse depletion and prolong drought.
- Commercial foods prices increased due to its unavailability in relation to high demand coupled with low purchasing power of the pastoralist with poor livestock market both at local and terminal market.
- Cases of malnutrition as the result of poor diet, low milk intake, lack of exclusive breastfeeding due to children not attached to mothers have been reported with cases of kwashiorkor and marasmus reported due to poor protein intake especially at Griftu, Eldas, Ogoralle, Ajawa, Kutulo and Wajir-bor while the pullout of Merlin emergency nutrition programme has affected the vulnerable groups, eg, <5 yrs children, pregnant and lactating mothers and outreach program.
- The nutrition status of children below five years (based on MUAC < 135mm measurement) declined slightly, with the percentage of those rated at risk of malnutrition rising to 34.0% from 33.8%. Diif, Hadado and Wajir-Bor were identified as hot spots areas for malnutrition.
- Emergency operation program (EMOP) was ongoing until October 2009 with targets beneficiary of 176,363 Vices total population of 562,271 in the greater Wajir District. FFA and HSNP was ongoing with EMOP being expected to be replaced with Protracted Relief and Recovery Program (PRRO) at latter time.
- Security situation was calm although conflict as the result of pasture and water was on increase with minor conflict confirmed at Diif. Also conflicts were reported in El –Derow area along Eastern border near Arbajahan between Somalis and Gabra due to opening of contingency bore hole by Gabra community. High Migration of pastoralist within and outside the district depicting failure of the rains in most of the divisions.
- The situation deteriorated and in alarm stage with all indicators declining including browse, water and pastures. The worst affected district with total rain failure were Wajir West and majority of the population were affected in terms of food security.

Recommendations by DSG and KFSM

- Provision of emergency water or drilling of contingency boreholes at Identified fallback areas during the RAT(Walanri, Ogoralle, Diff, Likole).
- Strengthening of early warning system to help detect and prepare possible drought mitigation measures and review drought contingency plan.
- Provision of contingency fund for drought mitigation due to the failure of the long rains.
- Conduct/carry out nutritional survey in Wajir west and North in order to ascertain the malnutrition status of children under five.
- Carry out de-stocking programme (livestock off-take) especially cattle.
- Increase food aid targets to 75% of the population considering the failure of the rains thus increase in poverty.
- Urgent provision of fuel for water trucking and subsidiary fuel for boreholes.

Current interventions

Food aid

- School feeding program supported by WFP is on-going.
- EMOP by world food program/GOK through the lead Agency Aldef-Kenya and implementing agency Wasda.
- Support to vulnerable groups like grannies with relief from OOP.

Non - food aid

- Support to emergency borehole repairs, replacement of submersible pumps and repair of engines and replacement of draw pipes and fuel subsidy by ALRMP.
- ALRMP support and intervention on conflict management mainly on water and pasture is on-going.
- Water trucking to centers and schools and health facilities.
- Mobile VCT services supported by APHIA II.
- Water trucking by Oxfam and Fuel support by ALRMP.
- Kazi Kwa Vijana (KKV) by government of Kenya.

1.0 Environmental indicators (stability)

1.1 Rainfall

- The worst affected district was Wajir West , many strategic pans are dry and those that collected water were being depleted fast due to high influx of pastoralist to these areas.
- The yield of shallow wells and boreholes have reduced due to the prolong drought coupled with high livestock pressure especially areas with little pasture like Kutulo, Diif and Dandu.

1.2 Condition of natural vegetation and pasture

- Vegetation, Pasture and forage condition are diminishing in quantity and quality due to high influx of pastoralist in the few areas that have received little rainfall.
- Livestock body conditions are deteriorating as the result of the inadequate pastures and the long tracking distance.

1.3 Water source and availability

- Availability of water source has deteriorated since all pans and dams have dried up and livestock depends on boreholes and shallow well especially at Griftu.
- Areas with water tracking have continued increasing , including Lolkuta North, Shimbirbul, Hadado, Basir, Belatul Amin , lekole north, barmil,Adan awale, Qudama, belet amin and Tarbaj
- Many livestock and human population are still depending on boreholes and shallow wells from the time of the dry season to date compared to other season.

1.3.1 Household Accessibility to water.

- The accessibility of water at household level increased in trekking distance and the time taken is approximately 12-15 hours in the pastoral community.
- Some of the households separated from the large stock and remained with the goats and sheep in a closer distance to the water sources.

1.3.2 Livestock access

- Livestock accessed water at an average distance of 40km from the grazing areas.
- Livestock concentrated in areas with high yielding boreholes.
- Livestock also moved to Somalia for search of pasture and browse.

1.4. Emerging issues

1.4.1 insecurity/conflict/Human displacement

- There were no cases of insecurity though conflict over water was reported at Diif and Arbajahan.
- High increase of essential commodity prices including cereals and commercial goods.
- Cases of kwashiorkor and Marasmus have been reported all over major health facilities including Wajir District hospital, Khorof Harar, Griftu, Bute and Habaswein.

1.4.2 Migration

- Livestock are still concentrated in along Somalia – Kenya boarder, Diif,Bute, Danaba/Dandu and Kutulo.

- Pastoralist from Wajir have also moved to Somalia and Ethiopia for pastures and Water.

1.4.3 Implications on food security

- Low livestock prices will similarly have a negative set back to the pastoralist purchasing power.
- Poor livestock prices had a negative impact on food security.
- Migration of livestock to Somalia and Ethiopia have negative on security
- Low livestock prices will similarly have a negative set back to the pastoralist purchasing power.

2.0 Rural economy indicators (Food Availability)

2.1 Livestock Production

- Production of livestock was low due to the stress related with the prolong drought.

2.1.1 Livestock body condition

- Livestock body conditions are poor especially Cattle/sheep while goat/camel are also deteriorating due to poor pasture and long distance trekking resulting in likelihood of death if alternative intervention are not carried out.
- Most of livestock especially the weak once are now grazed at Household level due to their physical body conditions.

2.1.2 Livestock diseases

- No any severe outbreaks of livestock disease have been reported however cases of PPR and CCPP were reported.

2.1.3 Milk production

- Milk production was still low as pastures and browse was still poor.
- Milk price increased and the availability of the commodity reduced especially in areas affected by the migration.
- The community depended on powdered milk for alternative source of milk.

2.2 Crop production

- Early planting was done in agro-pastoral live hood zone but due to inadequate rainfall crops have failed and no harvest done.
- Some of the maize planted especially in Agro-pastoral areas was used as hay since the crops had not matured due to inadequate rainfall.

2.2.1 Timeliness and condition of crop production

- Crops failed due to inadequate rainfall and the community lost hope of dry land farming.
- Wajir central community was using water from shallow wells for small-scale irrigation especially vegetables and water melon.

2.2 Pests and diseases

No diseases and pests were reported during the month.

2.2.3 Harvests

- No harvest of crops except little harvest from kitchen Garden farming which are sold at the local market especially in Wajir Central, Eldas and Griftu.

2.2.4 Implications on food security

- Poor or failure of the long rain season will have a negative impact on food production, livestock body condition, escalating prices of food staff, Poor livestock prices and generally on the food security situation in the Districts.
- Low livestock prices will similarly have a negative set back to the pastoralist purchasing power.

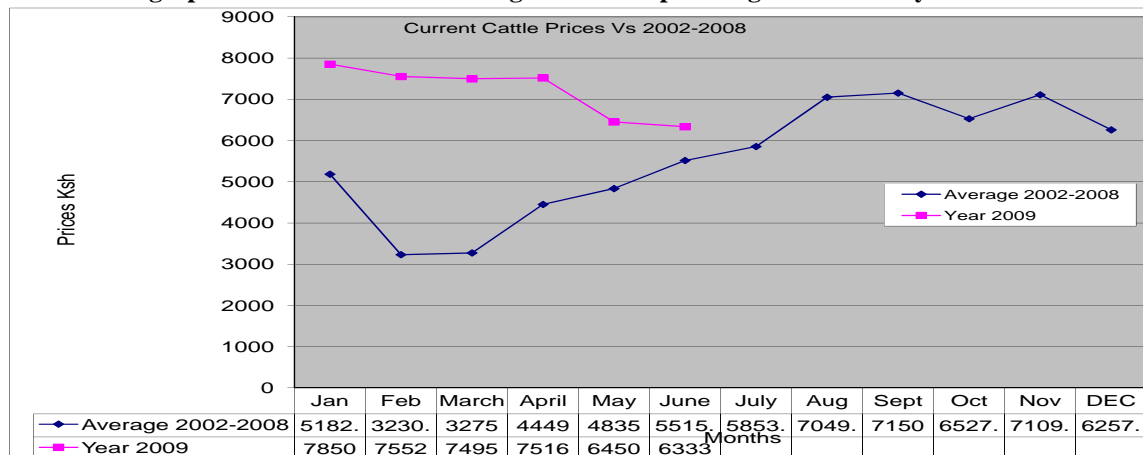
3.0 Access to food

3.1 Livestock marketing and sales.

Generally livestock prices were poor, especially in cattle/sheep at the local market while the demand is low due to the body condition.

3.1.1 Cattle prices

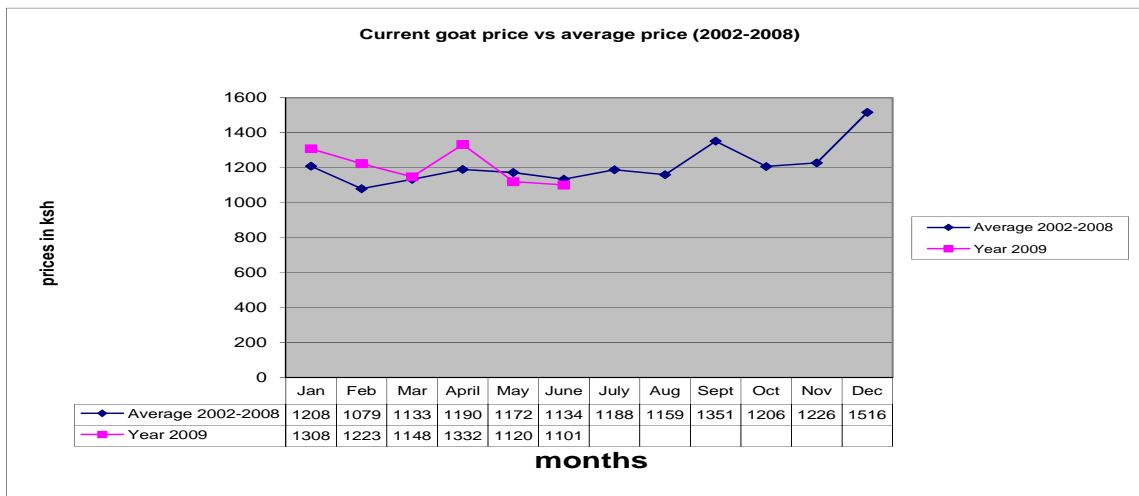
The graph below indicates cattle long term mean prices against current year 2009.



- The price for cattle have also reduced at the local market as compared to the previous month from Ksh 6450 to Ksh 6333 compared to the previous months.
- This was due to poor body condition coupled with low demand.

3.1.2 Goats prices

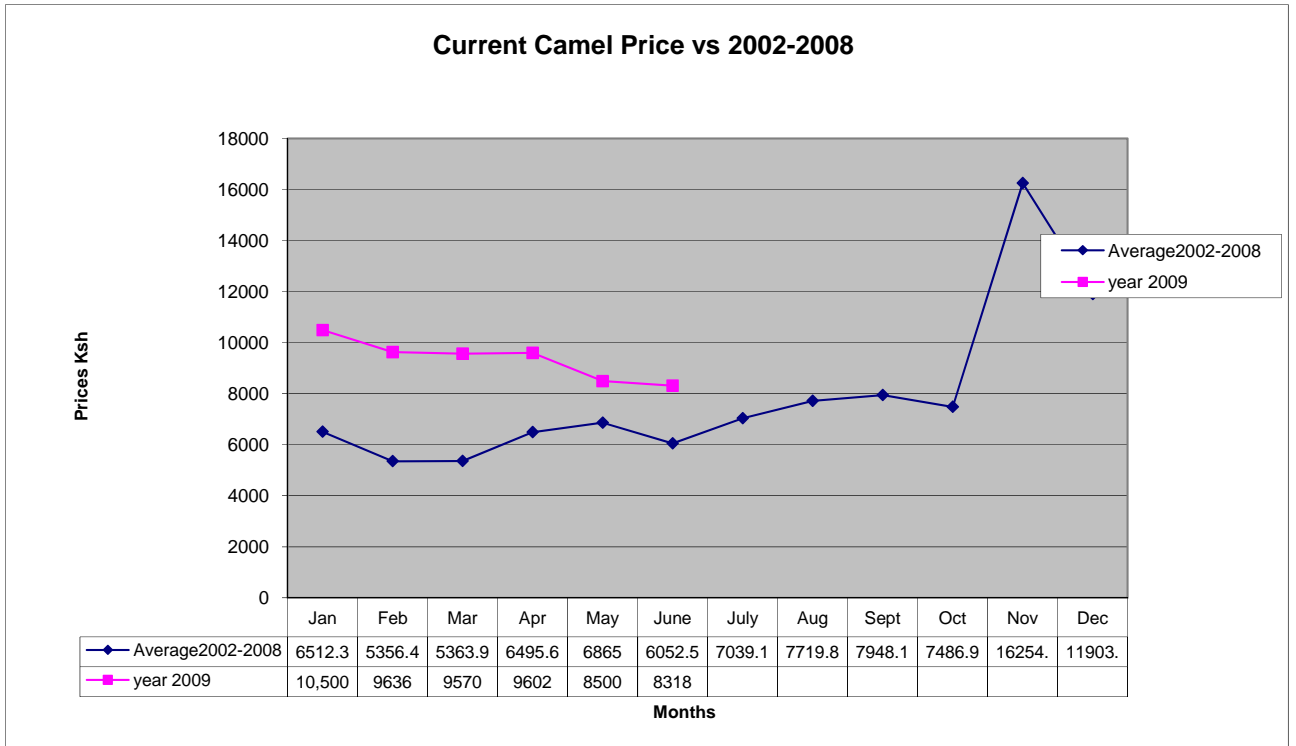
The graph indicates Goat long term mean prices against current year 2009.



- The price for Goats have similarly reduced from Ksh1120 in May to Ksh1101.
- Despite the price fluctuation goats were still sold at the terminal market and for petty trade at the local market.

3.3 Camel prices

The graph below indicates Camel long term mean prices against current year 2009



- Camel prices deteriorated compared to the previous month.
- The average price was Ksh8318 compared to Ksh8,500.
- Camels were sold at the local market most for meat and exported across Somalia and Ethiopia.

3.2 Livestock sales

- The market sales continued to reduce due to the unreliable rain received. The demand and the sales volume was low compared to other seasons.
- Poor body condition, prolonged drought and poor pastures/browse condition were determining factors in poor market.

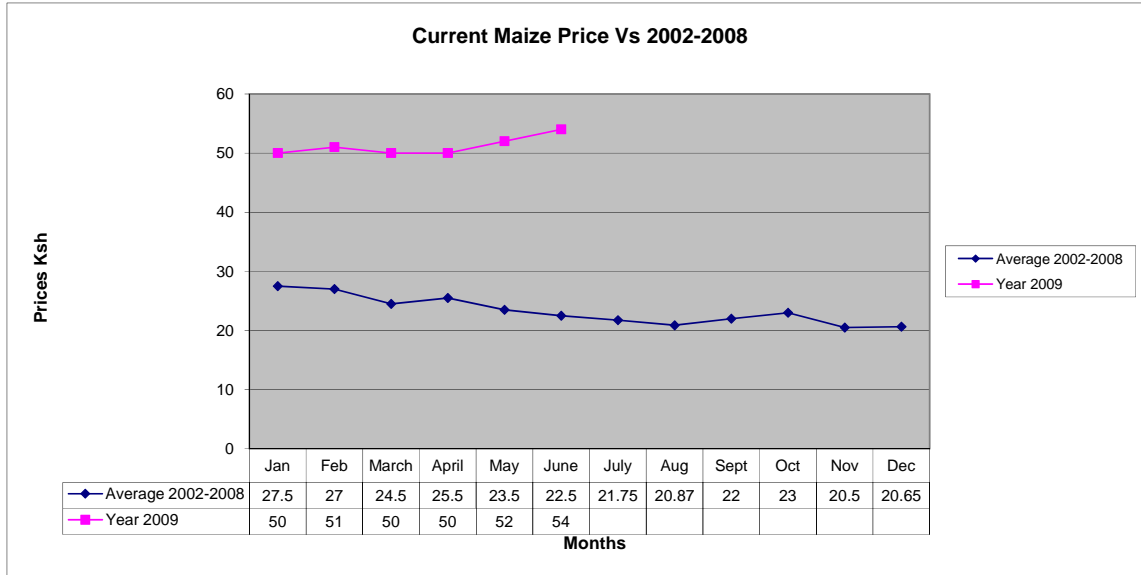
3.3 Milk consumption

- Consumption of milk was extremely low as the commodity was scarce with the few available used as alternative source of income to purchase other commercial foods.
- Communities, especially in settlements, opted for powdered milk as alternative milk supply.

3.4 Crop prices

3.4.1 Maize prices

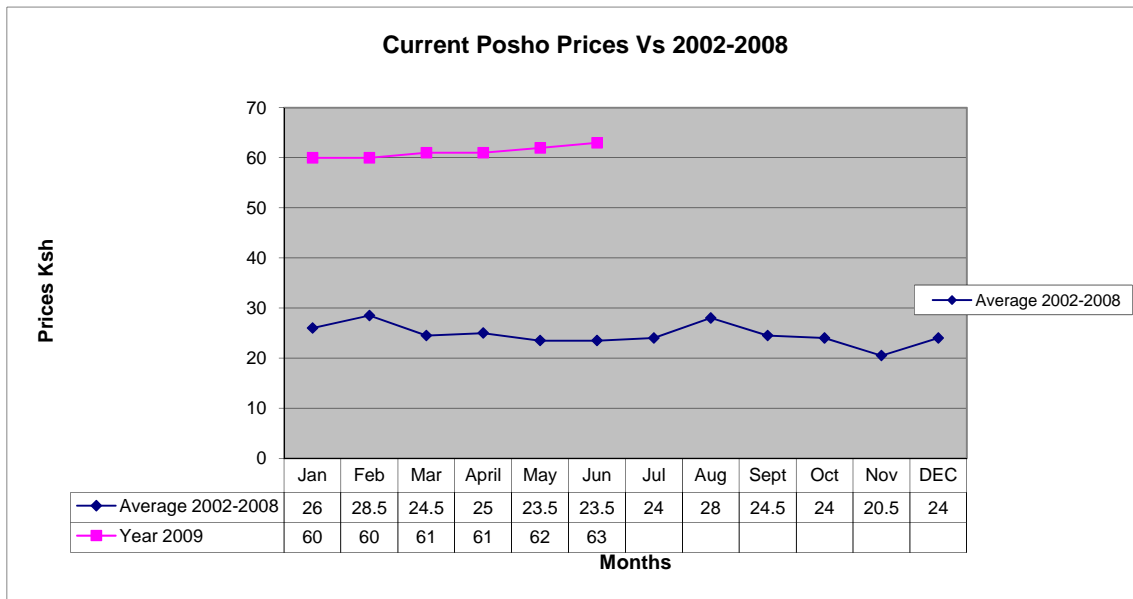
The graph below indicates maize long term mean prices against current year 2009.



- Maize prices increased during the month.
- The average price was Ksh 54 compared to Ksh52.
- This impacted negatively on the household food security situation since the purchasing power of the community reduced and majority opting for the commodity since the price was substantial as compared to other food stuffs.

3.4.2 Posho (maize meal) prices

The graph below indicates the long mean price of posho against the current year 2009.

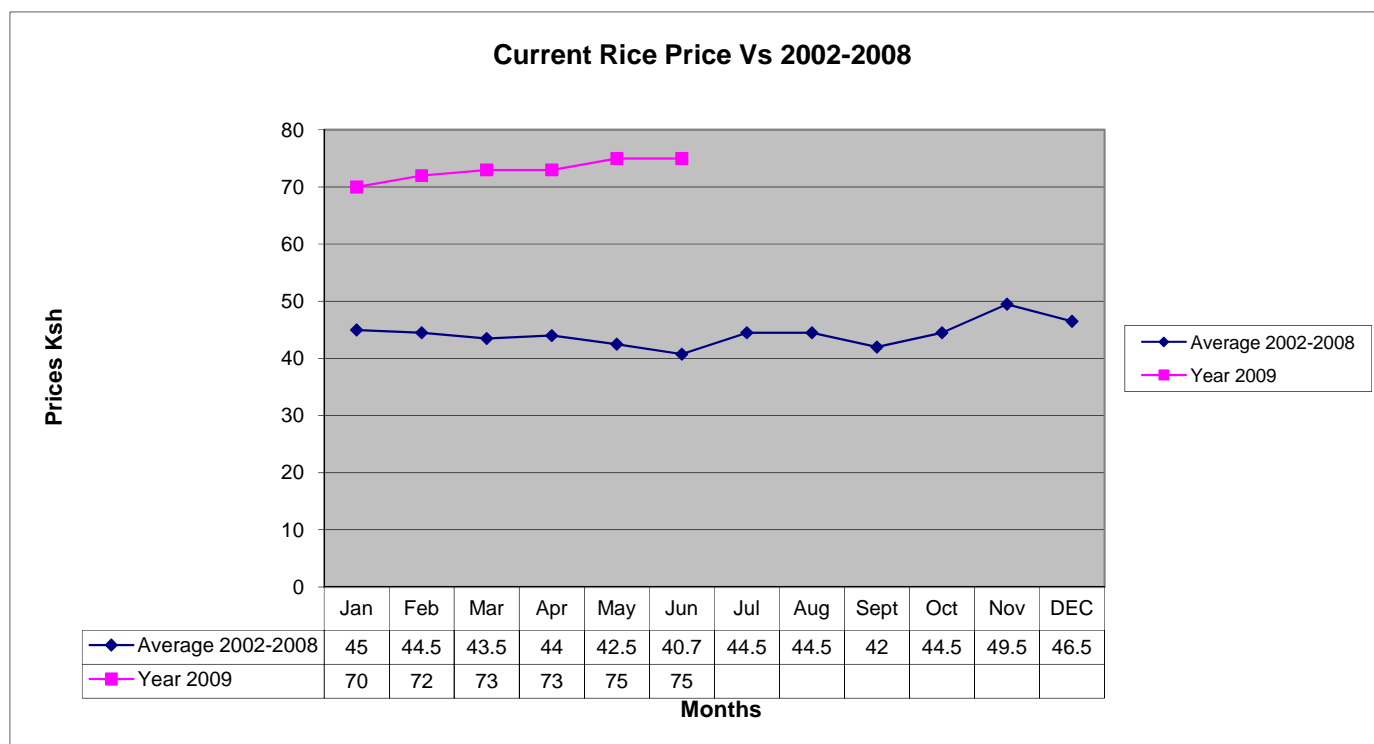


- Posho prices increased slightly compared to the previous month.

- The average price was Ksh 63 per kilo compared to Ksh62 in May.
- The price rise was attributed to increased demand.

3.4.3 Rice prices

The graph below indicates long term mean prices of rice against the current year 2009.



- The prices for rice have remained the same as compared to the previous month.

3.5 Income

3.5.1 Crop income

- Kitchen farming, using small irrigation pumps especially at Wajir central are alternative source of income.
- Drought resistant crops are also grown in small scaling farming especially in the northern part of the District like Bute.
- Water melon was grown widely through small irrigation scheme.

3.5.2 Livestock income

- Source of income from livestock is about 70% for the pastoralist including sale of hides and skin, sale of live Animals, most people engage in livestock trade as brokers, middlemen or small scale traders and sale of quarry products.
- Brokers/middlemen facilitates the sale of livestock between the pastoralist and the buyers.

3.5.3 Other income

- Sale of Miraa, quarry, daily casual labour, fetching of firewood are other alternative source of income, especially in Small business/informal livelihood zone.
- Sale of gum and resin are also commonly practiced.
- Wages at water sources especially at the shallow wells.

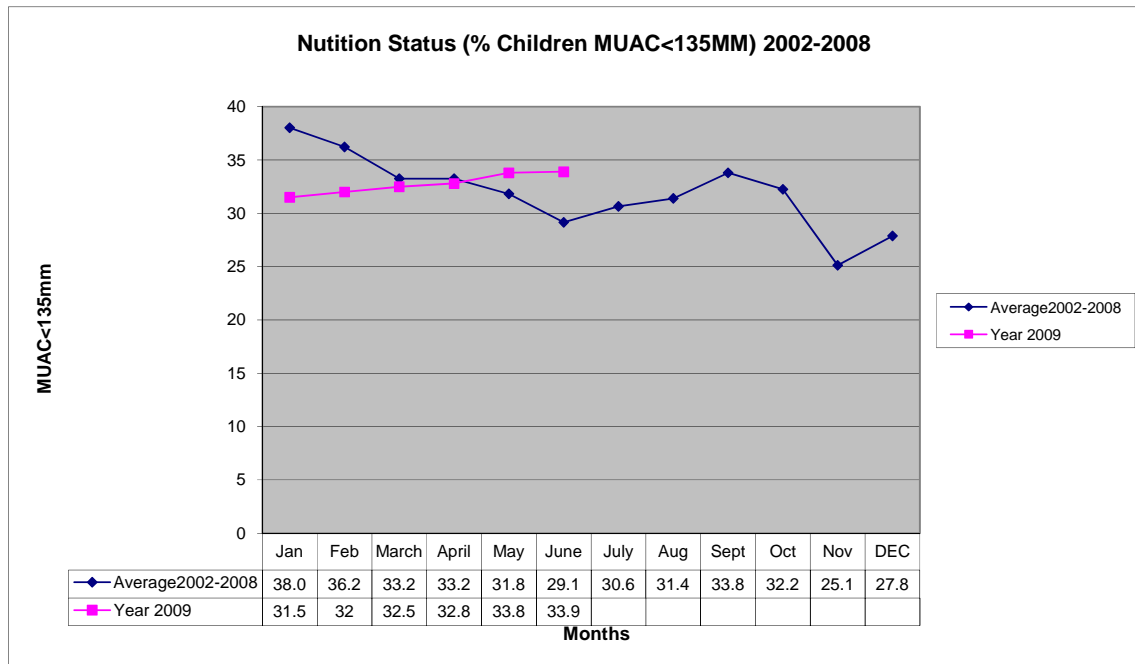
3.6 Implication of food security

EMOP was ongoing until October 2009 with a target beneficiary of 176,363 persons.

4.0 Human welfare indicators (utilisation of food)

4.1 Nutrition status

The graph below indicates long term Muac <135mm against the current year 2009.



- As causes of malnutrition were multi-sectoral embracing food .health and care practices malnutrition has increased in all the districts due to lack or inadequate rainfall in almost all the district, hence poor market, increased food prices, reduced animal’s production such milk.
- Withdrawal of Merlin emergency nutrition programme has affected the vulnerable groups, eg, children under <5yrs, pregnant and lactating mothers.
- Some areas such as wajir-bor, Buna, Ajawa etc have no source of proteins and all the children are fed on strong tea hence likelihood of more cases of kwashiorkor.
- Facilities including Ogoralle, Ajawa , Buna ,Kutulo and Wajir-bor have reported cases of kwashiorkor.
- The percentage of malnutrition of children under five years using MUAC (<135MM) have increased as milk and other cereals prices are escalating. It increased from 32.8% to 33.8% in the current months.

4.2 Health

- Morbidity and mortality rate in the District remains as Malaria, URTI, Diarrhoeal diseases and malnutrition.

4.3 Flagged areas

- Cases of kwashiorkor have been reported in Ogoralle, Ajawa ,Buna ,Kutulo and Wajir-bor have been reported.

5.0 Current interventions

5.1 Non-food interventions

- Support to centers (that have institution including Dispensaries and schools) with serious water crisis through water trucking using GOK water bowsers by ALRMP and Water.
- Support to emergency b/hole repairs', replacement of submersible pumps and repair of engines and replacement of draw pipes by ALRMP.
- Mobile VCT services supported by APHIA II.

5.2 Food aid

- EMOP relief food distribution by WFP through lead agency, ALDEF-K and implementing partners (WASDA).
- Basic relief support from OOP especially to vulnerable groups through KRCS.
- FFA-food for asset program by WFP through partner agency.

5.3 Other coping strategies

- Separation of livestock herds to small stock and large stock, slaughtering of calves.
- Sale of gum and resins, mirra and quarry products such as white wash.
- Purchasing of food on credit.
- Reliance on remittances.
- Wage at water point, Sell of animals, fetching of firewood and charcoal burning.
- Slaughtering of small stock for food.

6.0 Recommendations to DSG and KFSM

- Provision of contingency fund for drought mitigation due to the failure of the long rains.
- Carry out nutritional survey in Wajir west and north District to know the magnititude of malnutrition cases.
- Carry out de-stocking programme (livestock off-take) especially cattle.
- Increase food aid targets to 75% of the population considering the failure of the rains.
- Strengthening of Diseases surveillane both animals and Human during this time of stress.
- Provision of stand by Gen-set, sub-mersible pumps, fast moving spares and fuel subsidy for emergency drought mitigation measures.
- Provision of emergency water or drilling of contingency boreholes at Identified fallback areas during the RAT (Walanri, Ogoralle, Diff, Likole).
- Strengthening of early warning system to help detect and prepare possible drought mitigation measures and review drought contingency plan.
- Strengthening of peace conflict mechanism especially to areas with high concentration Danaba/Dandu,Kutulo and along Wajir – Marsabit border.

- Strengthening and enhancing of water trekking especially with areas of acute water shortages.