

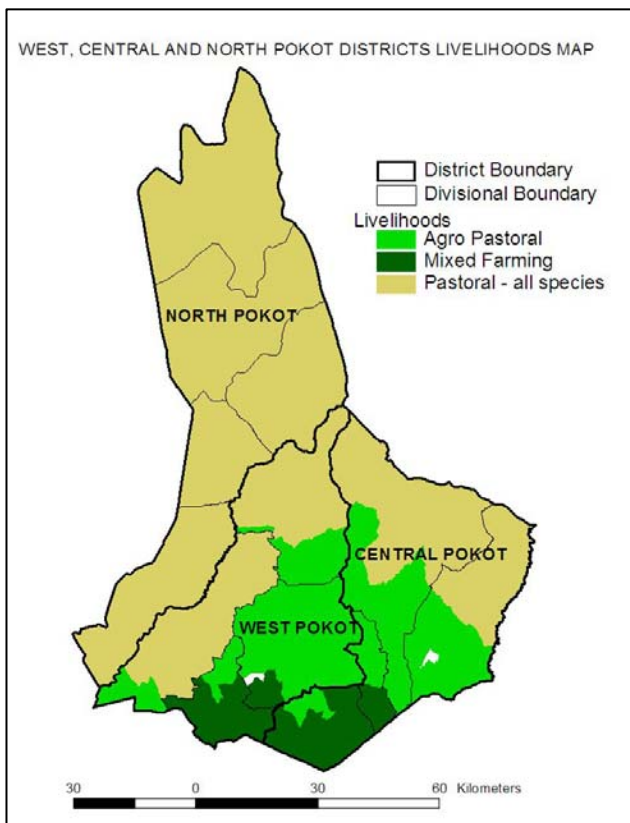


**OFFICE OF THE PRIME MINISTER
MINISTRY OF STATE FOR THE DEVELOPMENT OF NORTHERN KENYA AND OTHER ARID LANDS
ARID LANDS RESOURCE MANAGEMENT PROJECT II**

DROUGHT MONITORING BULLETIN, JUNE 2009

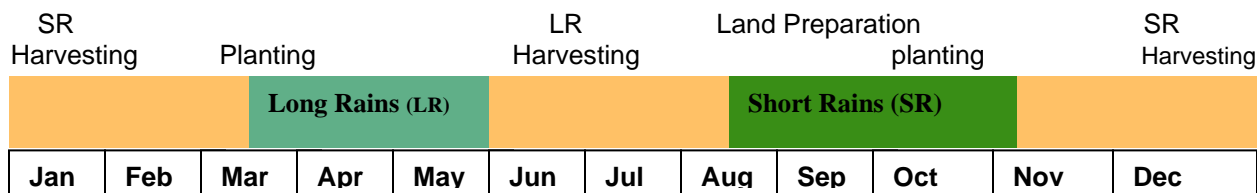
West, Central and North Pokot District

Warning Stages



Livelihood Zone	Warning stage	Trend
Agro pastoral	Alarm	Worsening
Mixed farming	Alert	Worsening
Pastoralist	Alert	Worsening
District	Alert	Worsening

Seasonal calendar



Situation overview

- Rainfall distribution was poor in the district, with below normal rainfall amounts received. The most affected livelihoods were the agro-pastoral, which received rainfall below 20% of the normal. This was a significant decline compared to the previous month of May, where most of the areas had received rainfall between 80% - 120%.
- The temporal distribution was for an average of two days, towards the end of the month and distribution was very poor.
- In South Turkana and Baringo districts where most livestock in the lowlands migrate to, rainfall was below 10mm in Northern Uganda, which also serves as a dry season grazing area, rainfall received was between 10mm-20mm in Trans Nzoia district, which was the major agricultural zone supplying food in West Pokot and greater North Rift, rainfall was between 10mm-40mm and this was below 50% of the normal.
- There was scarcity of pasture in the pastoral and agro-pastoral livelihoods. Browse was available but it is not expected to last for more than three weeks.
- Distances to grazing areas increased to 5.9km, compared to 5.4km and 5.0km in May and April respectively.
- Livestock, especially, cattle moved back to dry season grazing areas, which was not normal during the time of the year.
- Livestock body condition was poor and milk production declined.
- The major water sources remained natural rivers and strategic boreholes.
- Crop failure for beans was recorded and maize was wilting. There is likelihood of more crop failures for maize if rain is not received.
- Suspected cases of CCPP (*Contagious Caprine Pleuro Pneumonia*) are on the increase especially in North Pokot. Black quarter vaccinations are ongoing in Chepareria where there were suspected cases.
- Average cattle price reduced from Ksh7,813 to Ksh7,218 while average price for goats reduced from Ksh850 to Ksh820.
- Prices of maize remained high, at Ksh41 per kilo. There is also scarcity of the food commodities, especially maize and beans in the market.
- Price for beans also showed increase from Ksh73 to Ksh75 due to reducing availability of supplements like milk and green vegetables.
- During the month of June the Mid-Upper Arm Circumference (MUAC) recorded was 8.9% compared to 8.5% recorded in May. This is an indicator of worsening conditions across the livelihoods.
- The situation in the districts was at alert stage and on a worsening trend.

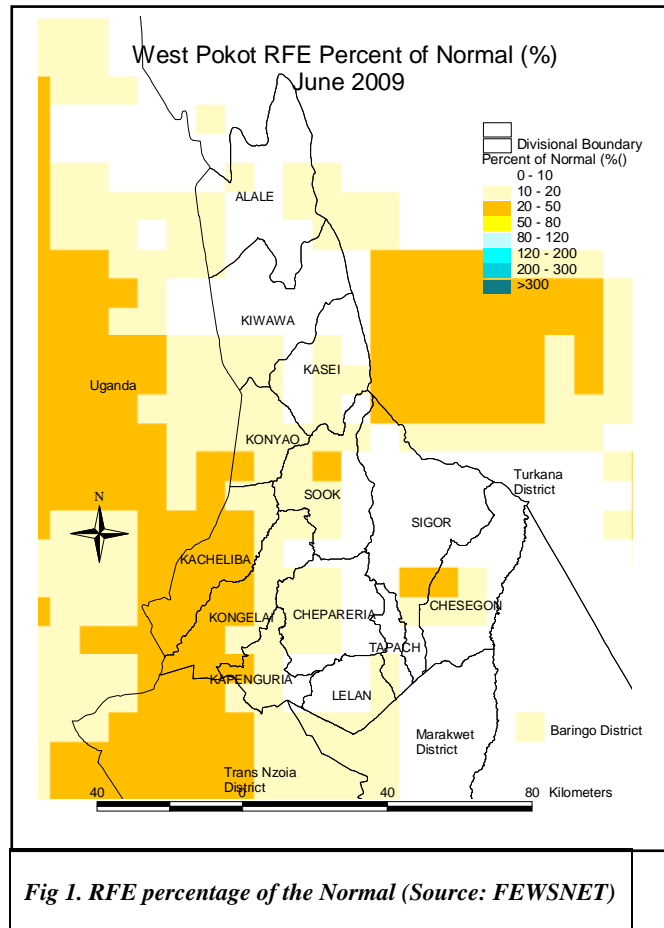
Recommendations to DSG and KFSM

- It is recommended that an evaluation of the actual vulnerable population be conducted to establish the number of people that are food insecure.
- More strategic boreholes should be rehabilitated, especially by partners in order to improve access to water.
- Vaccination to be conducted, especially in North Pokot where cases of CCPP reported.

1.0 Environmental indicators (Stability)

1.1 Rainfall

- The overall performance of the rains was poor with no major improvement compared to last month
- Rainfall received in most parts of the district was below 20mm which is below the expected long term average above 120mm during June.
- The most affected were the lowlands in both the agro pastoral and Pastoral livelihoods (Fig 2) which received less than 10mm of rainfall.
- Most of the mixed farming livelihoods were equally affected, receiving between 10mm-20mm as well.
- During a normal year, the expected rainfall would have been over 120mm on average.
- This situation extends to the neighbouring districts which is equally bad and may have spill over effects to the food security status of the district.
- All the livelihoods were affected by the low rainfall amounts, with the agro-pastoral livelihoods being most affected, followed by the pastoral livelihoods.
- Within the mixed farming, where the conditions were normal in May, there was continued degeneration of crops as rainfall was below normal.
- The temporal distribution was for an average of two days, towards the end of the month and distribution was very poor.
- During the month, most of the areas received Rainfall between 0% - 20% compared to the long term average of the same period.
- The overall situation was not normal at the time of the year and was on a worsening trend.



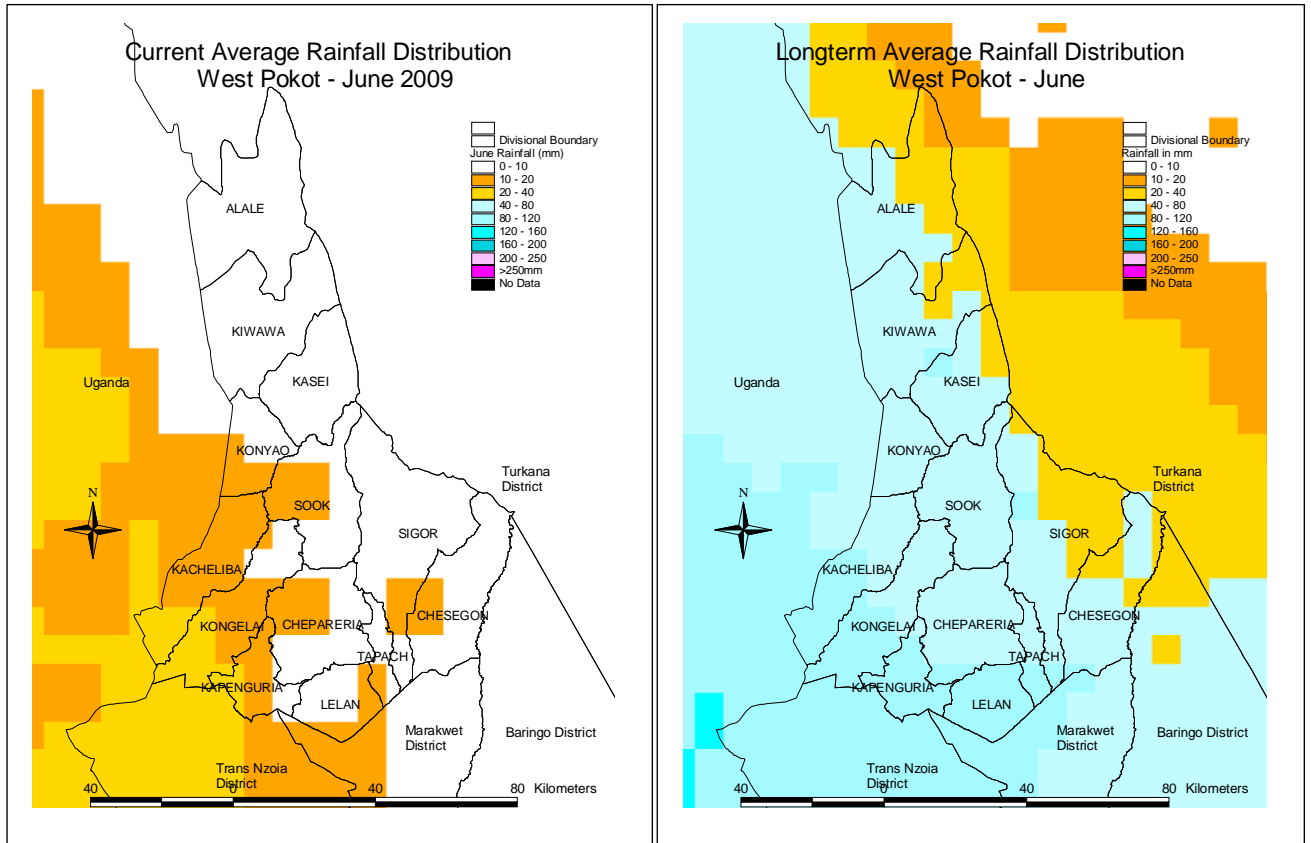
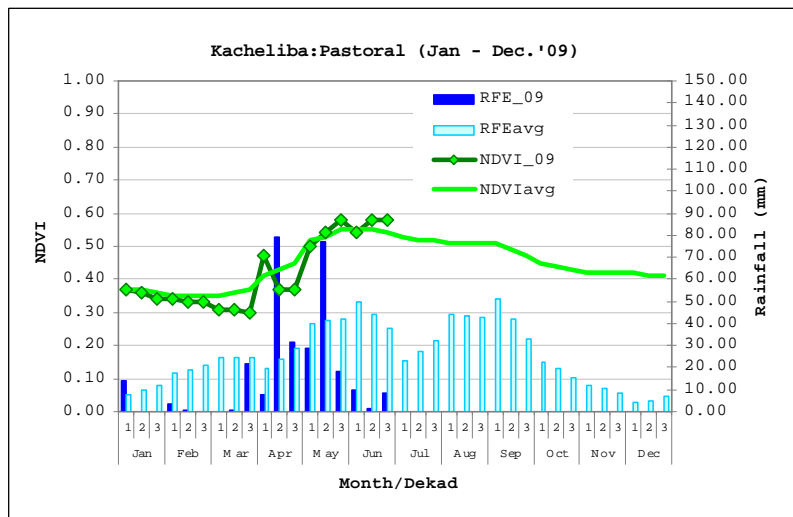


Fig 2. Comparison of the current rainfall distribution against long term estimates for June (Source: FEWSNET)

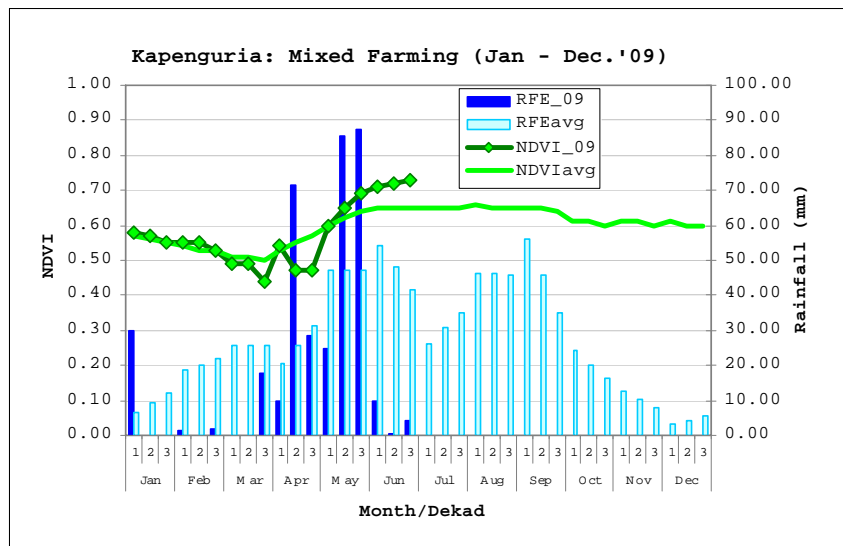
1.2 Condition of natural vegetation and pasture

1.2.1 Quality and quantity

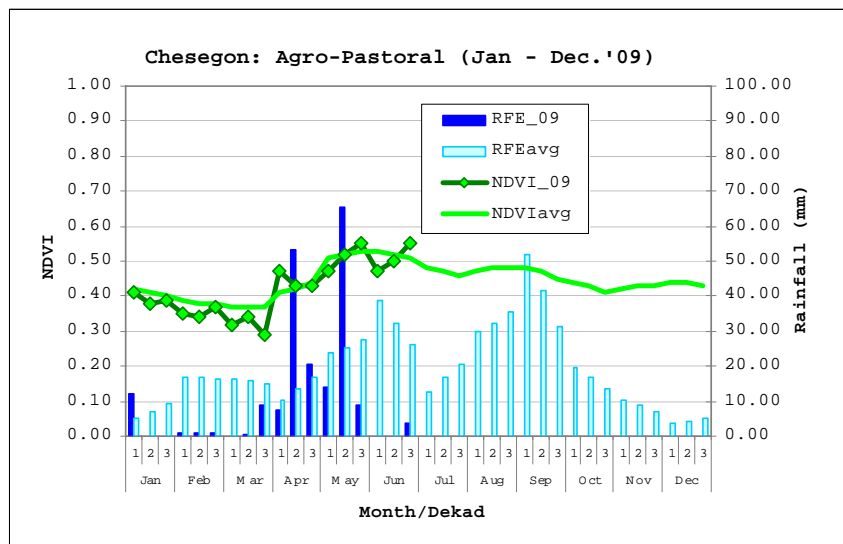


- Improvement of vegetation and pasture in the pastoral livelihoods was good, especially at the beginning of the month, but this seemed to change towards the end.

- The improvement was attributed to the rains that were received during the end of May.
- However, in June the rains progressed as usual and the situation started to worsen.
- The most affected areas within the pastoral livelihoods are Kangoletiang and Parts of Turkwell. However, if the situation does not improve, most of the lowlands remain vulnerable.
- The most affected livestock species was cattle, since grass cover was almost bare. However, there was some availability of browse for goats and camel.
- This was not a normal situation during the time of the year.



- In the mixed farming livelihoods, there was an improvement in the vegetation cover due to the rains received in March.
- However this started changing towards the end of June, as pasture and fodder began to reduce.
- Crops have started wilting and this may worsen if the rain season does not progress on well.



- In the agro-pastoral livelihoods, the situation here has been more unpredictable with most of the indicators showing a lot of fluctuations.
- The areas received very little rainfall in the month.
- There has been slight improvement in browse as a result of the April – May rains, but condition of pasture was very poor.
- Most of the cattle in these areas have migrated and what remains are goats
- Some areas including Pserum and Nyangaita did not receive any rains at all in June.
- This situation is likely to worsen if the season doesn't progress well.

1.2.2 Distances to grazing areas

- Distances to grazing areas increased compared to the last two months.
- Most of the animals that had moved to the households in April started to retreat to dry season grazing areas in May and it seems most of them moved away.
- This affected milk production within the households, hence lowering nutrition status of children and households income.
- The recorded average distance to grazing areas was 5.9km compared to 5.4Km and 5.0 Km recorded in May and April respectively.
- The longest distance recorded was in Konyao of 14km. Animals from Konyao area moved to the neighbouring Uganda, where pastures were better.
- The situation was not normal and was on a worsening trend

1.3 Water sources and availability

1.3.1 Water sources

- The major water sources remained natural rivers.
- Strategic boreholes are also acting as critical water source in the district especially where there were no rivers close to the communities.
- Water from reservoirs like dams and pans reduced as the rains failed.
- The other major water sources are likely to be preferred were the sand dams, especially after the rivers stop flowing downstream.
- The situation was not normal since dams and water pans would be the major sources of water at the time of the year.

1.3.2 Household access to water

- The distances traveled by households to access water increased compared to last month.
- The recorded distance was 3.2km compared to 2.7 km recorded last month.
- Nyangaita continued to record the longest distance of 6.9km and 4.7km in Konyao.
- The increase in distances is as a result of rainfall failure hence changes in water sources.
- This situation is expected to worsen if no rains are received soon.

1.4 Migration

- Livestock migration was common in the months of May and June.
- In May most livestock started moving to the households after some rains were experienced.

- However, the progress of the season so far was not normal and animals moved back to dry season grazing areas.
- There was high insecurity and risk of cattle rustling, especially where there were livestock concentrations.

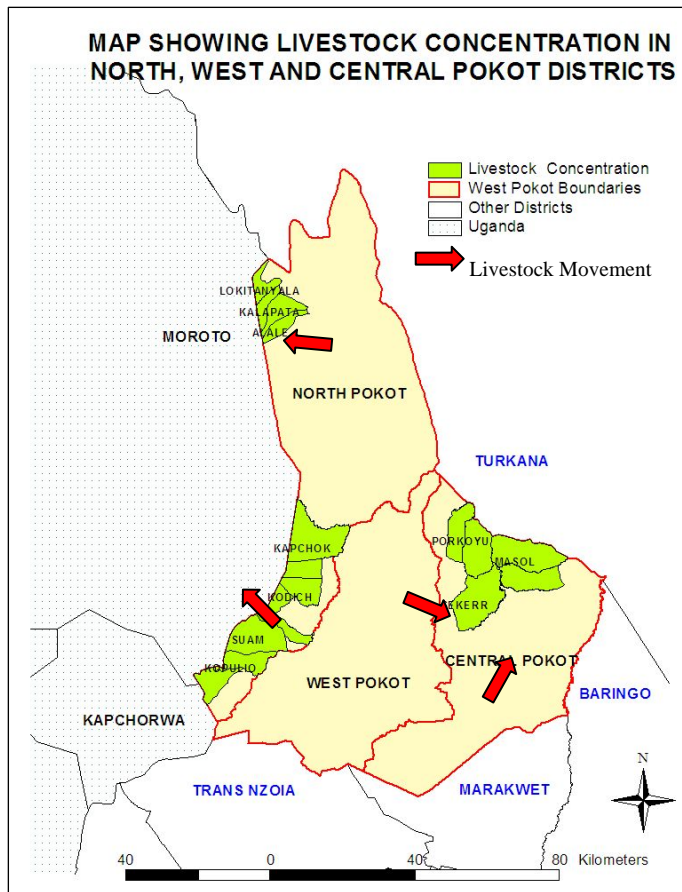


Fig 3. Map showing Livestock Concentrations and Movements in and out of West Pokot and other districts.

1.5 Implications on food security

- The food security situation continued to worsen in the district.
- In the previous season, there was a crop failure, which led to strained availability of farm inputs this season.
- During the current season rainfall has progressed poorly, reducing the milk production as well as availability of ready supplements like green vegetables.
- This was not a normal situation at the time of the year.

2.0 Rural economy indicators (Food availability)

2.1 Livestock production

2.1.1 Livestock body condition

- The livestock body condition, especially in the Agro-pastoral and pastoral livelihoods was poor.
- This was as a result of pasture degeneration in quality and quantity.
- Among the most affected animals were cattle, especially the milking animals which did not move to the dry season grazing areas.
- Camels were least affected due to availability of browse.
- The low land areas of Kangoletiang, Nyangaita and Sigor are the most affected.

2.1.2 Livestock diseases

- The suspected cases of Black Quarter in Chepareria division were still there, but vaccinations were ongoing.
- Suspected cases of CCPP (*Contagious Caprine Pleuro Pneumonia*) are on the increase, especially in North Pokot.

2.2 Crop production

2.2.1 Timeliness and condition of various crop production activities

- There was not much activity going on in the farms.
- There was crop failure, especially for beans, was as a result of the failed rains.
- In most beans growing areas, there were chances that there will be a total crop failure.
- Maize had not yet matured and there are chances that there will be some harvest if the rains fall.
- However, the progress of the rains led to wilting of the crops in the farm and there was a possibility that crop failure will also be recorded.
- The food status situation was not normal at the time of the year.

2.2.2 Pest and diseases

- There are no cases of crop pest and diseases reported out of the normal

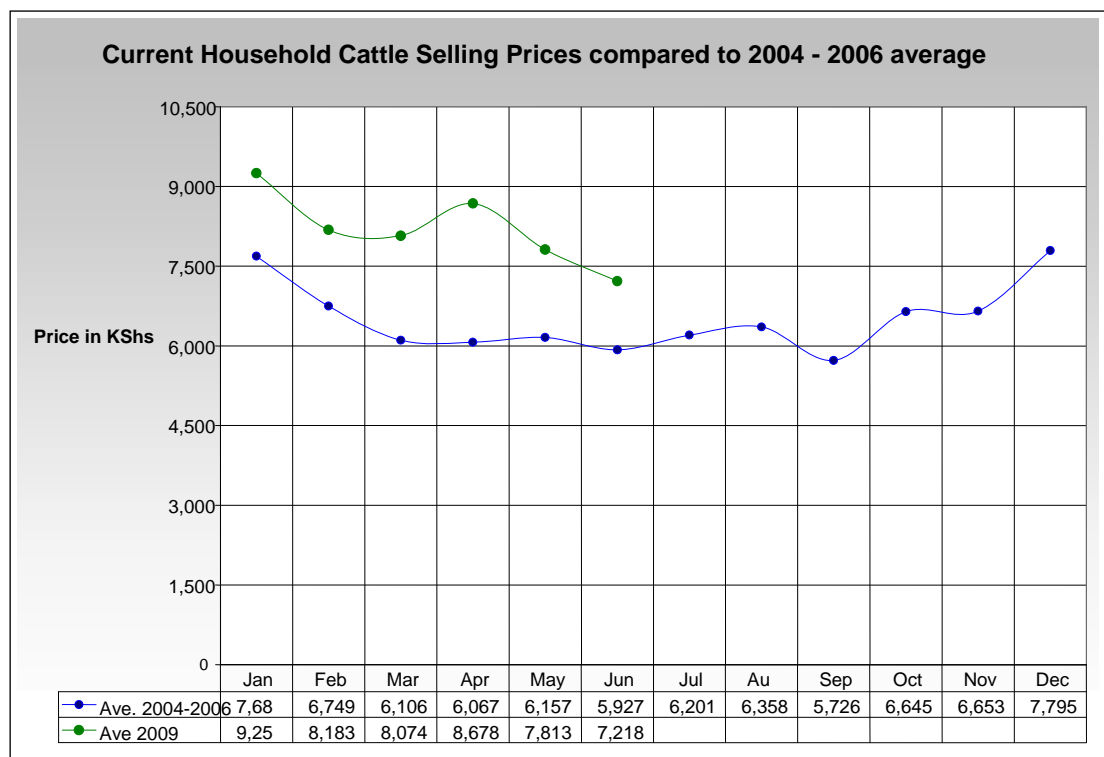
2.2.3 Implications on food security

- The food security in the district was still very bad.
- Market prices of the common food commodities remain high and purchasing power of the people was low.
- Availability of maize and beans was low as well, with some markets recording total absence of the commodities.
- This situation is likely to worsen further since there has already been a crop failure for beans this season.
- This was not a normal situation at the time of the year.

3.0 Access to food

3.1 Livestock marketing

3.1.1 Cattle prices

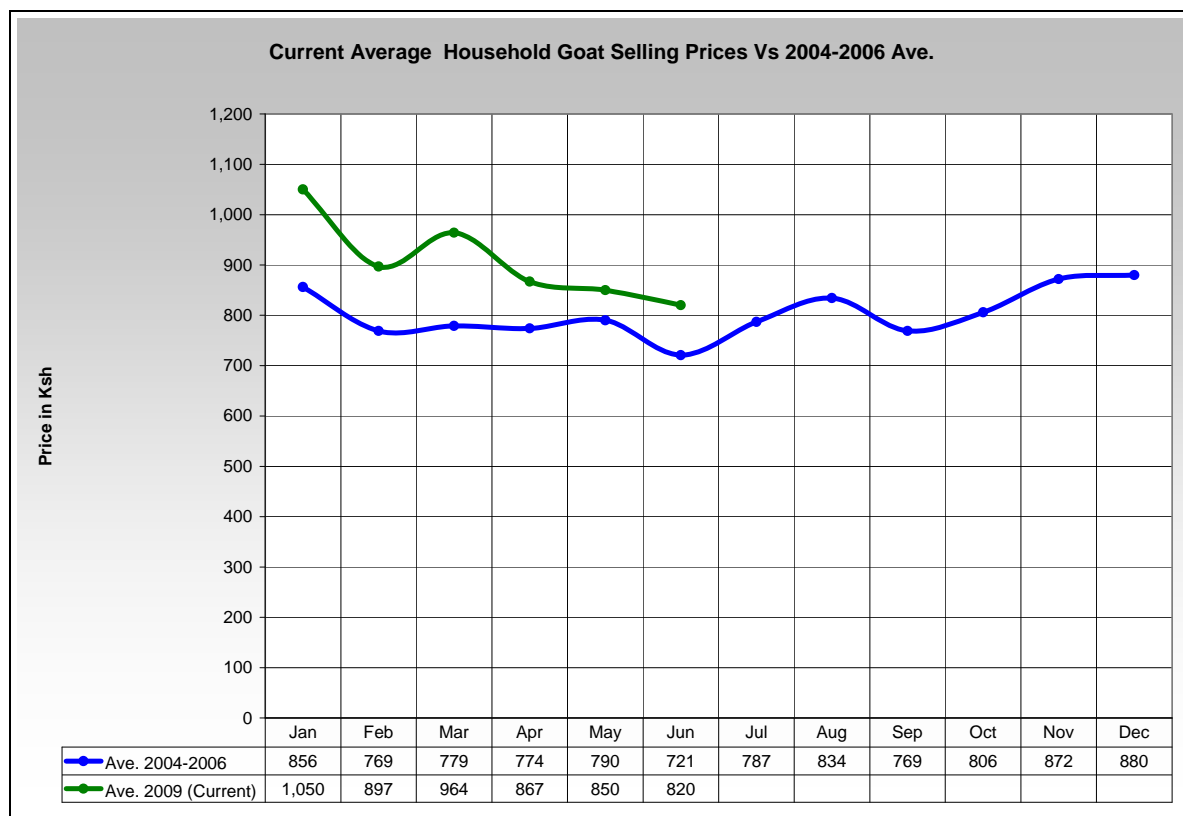


- Cattle prices continued to decrease in all the areas but more so in the pastoral and agro pastoral compared to last month.
- The average price recorded in the month was Ksh 7,218 compared to Ksh 7,813 recorded in May.
- The continued price decrease was as a result of deteriorating pasture quality and quantity and the worsening livestock body condition.
- The lowest prices of Ksh 5,000 were recorded in Kongelai division, within the pastoral livelihoods.

3.1.2 Goat prices

- Prices of goats reduced across the livelihoods, just like the other livestock.

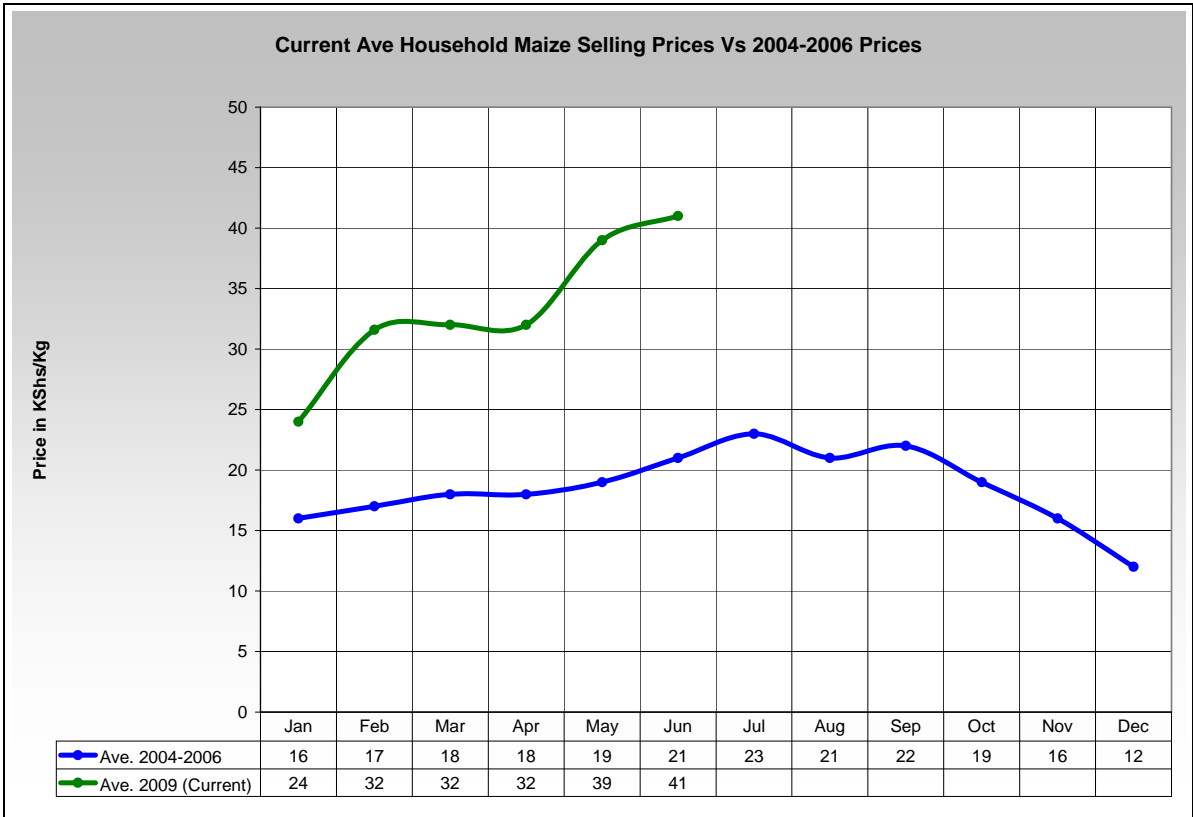
- The reduction was also attributed to worsening rangeland conditions, hence reducing browse.
- Though the browse condition was not as bad as the pasture condition, goat prices were also affected by the existing quarantine as a result of the PPR (*Pestes Petis Ruminants*) disease.
- The average price recorded in the month was Ksh820 compared to Ksh850 recorded in May.
- The lowest price of Ksh570 was recorded in Kangoletiang, a pastoral livelihood area.
- The prices are likely to continue reducing if there is no improvement of pasture and browse.



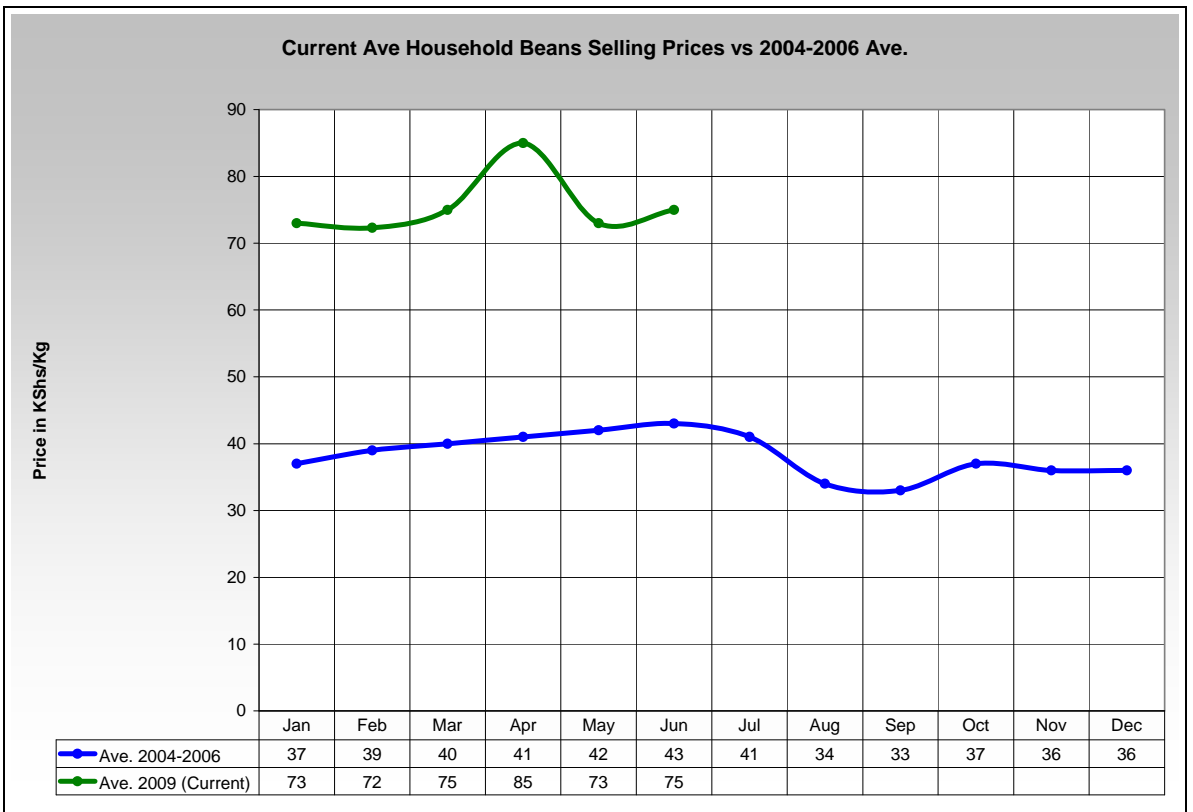
3.3 Crop prices

3.3.1 Maize prices

- Maize prices continued to increase as it has been the trend recently.
- Availability of maize in the markets continues to be scarce as the demand continue to rise.
- The average recorded price was Ksh 41 per kilo compared to average of Ksh 39 and Ksh 32 recorded in May and April respectively.
- This situation is likely to worsen if the progress of the rainfall is poor and crop failures are recorded.



3.3.2 Beans prices

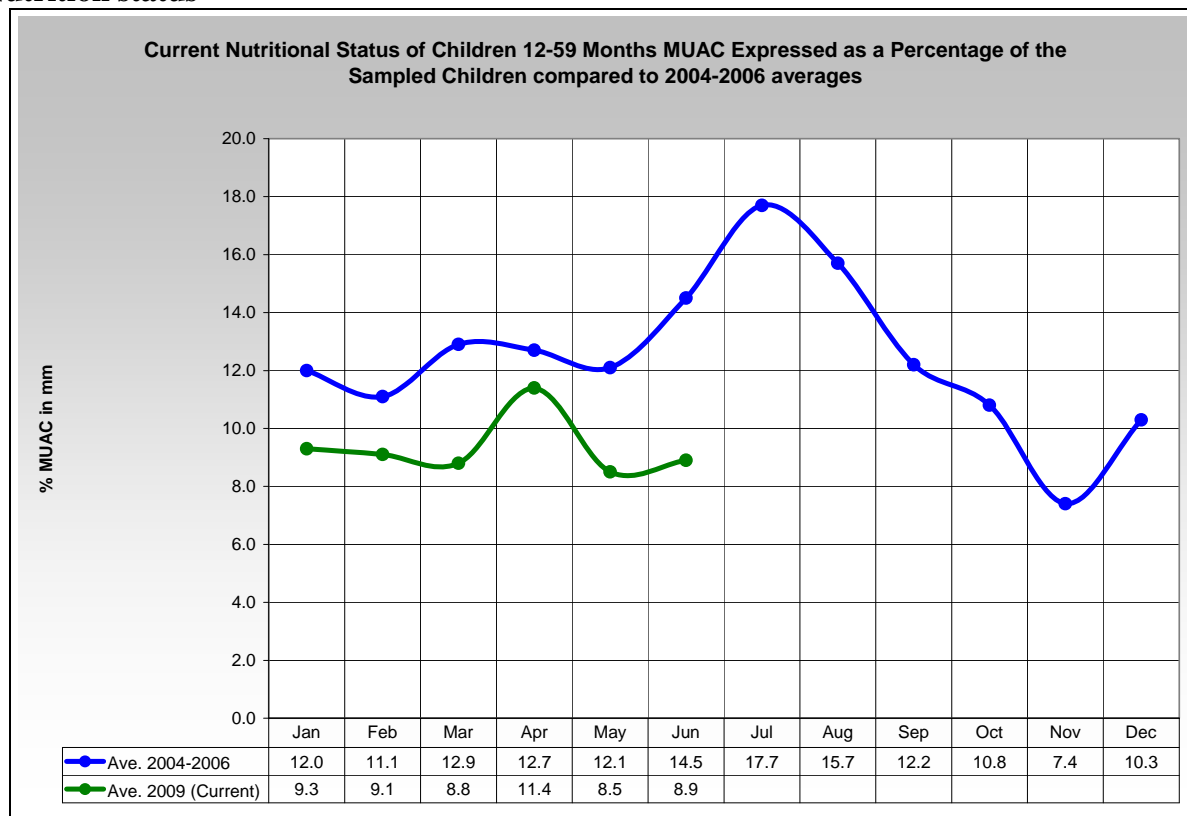


- Prices of beans showed an increase in trend compared to last month.

- A reduction in price was recorded since there were supplements to beans like the green vegetables in the farms.
- However, with the receding of the rains, this changed and the price is on the increase.
- The average price was Ksh75 compared to Ksh 73 recorded in May.
- Very few households, however, recorded sale of beans and most people are relying on the outside markets.
- This is a situation that is not normal and is likely to worsen.

4.0 Human welfare indicators (Utilisation of food)

4.1 Nutrition status



- The nutrition status of children below five years declined slightly during the month under review.
- The percentage of children rated at risk of malnutrition was 8.9% compared to 8.5% recorded in May.
- This was an indicator of worsening conditions across the livelihoods.
- The improvement was a result of milk production that went up and availability of green vegetables as supplements by then.
- With the rains having receded, milk production went down as animals moved far from households in search of pasture and availability of green vegetables reduced.
- This is an indicator of worsening conditions, which is likely to get worse.

5.0 Current interventions

- Distribution of relief food was commenced in some parts of the district.
- The food supplied, however, was not enough for the vulnerable population that continued to increase.

6.0 Recommendations

- It is recommended that an evaluation of the actual vulnerable population be conducted to establish the number of people that are food insecure.
- More strategic boreholes should be rehabilitated, especially by partners in order to improve access to water.
- Vaccination to be conducted, especially in North Pokot where cases of CCPV reported.