

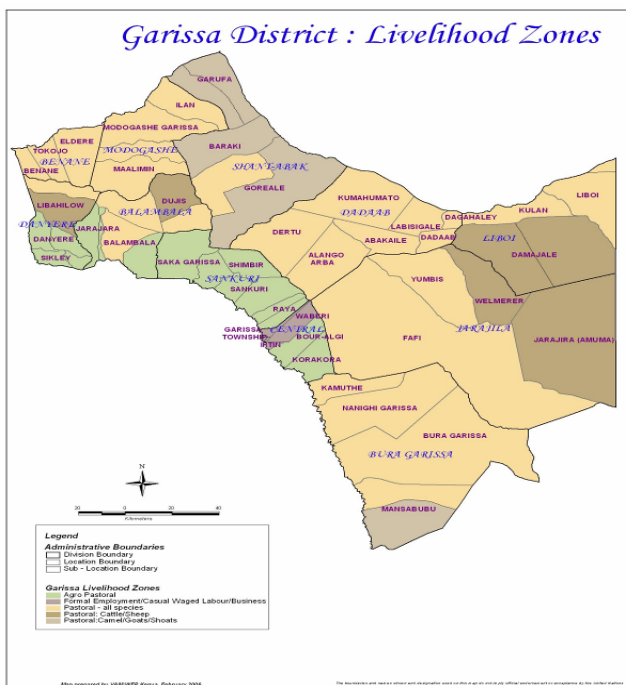


**OFFICE OF THE PRIME MINISTER
MINISTRY OF STATE FOR THE DEVELOPMENT OF NORTHERN KENYA AND OTHER ARID LANDS
ARID LANDS RESOURCE MANAGEMENT PROJECT II**

DROUGHT MONTHLY BULLETIN, NOVEMBER 2009

Garissa District

Warning Stages



Livelihood Zone	Warning stage	Trend
Agro-pastoral	Alert	Improving
Pastoral-Cattle/Sheep	Alert	Improving
Pastoral- all species	Alert	Improving
Pastoral: Camels and Goats	Alert	Improving
District	Alert	Improving

Seasonal Calendar



Dry period (Jilal) consisting of January, February, & March. Temperatures are high; activities carried out include,

- migration of livestock for pasture & water search,
- Herd separation
- Livestock marketing
- Pressure on boreholes
- Conflicts

Long rainy season (Guu), starts late March and continues in, April and May. Activities carried are-

- Selection & breeding of livestock
- weeding ceremonies
- weaving
- male circumcision
- restocking of livestock
- planting for rain fed crops
- deworming of livestock
- Forage survey

Dry and cold period (Hagaa) in the months of June, July, August, Sept. and mid October. The activities performed are:

- High rate of livestock and household migration
- High labour demand
- Destocking /culling
- Surveillance for pasture /browse
- Caravan water

Short rainy season (deer) of Oct, Nov and Restock December. Activities for this period are: ing of livestock.

- Breed improvement
- Planting for rain fed crops
- Crafts and weaving
- Calving and kidding period

Situation overview

- The district recorded rainfall during the month with fair to poor distribution. The northwest divisions of Benane, Danyere and Mbalambala plus central division received very little rains. The divisions reported to have received good rainfall are Liboi, Dadaab, Shantabak, Jarajilla and southern part of Bura and Galmagalla.
- The quality and quantity of pasture and browse improved tremendously, with high regeneration/regrowth of forage realized, thus improving on the uptake for livestock and consequently reducing the trekking distances.
- The main water sources available to the pastoralists in the district were boreholes, River Tana, Benane springs, earth pans and water pans. Water was available to livestock, with most earth pans and water pans collecting substantial amount of water thus reducing congestions at water points.
- Water accessibility for households relatively improved when compared to the preceding month. The distances covered by pastoralists reduced with an estimated average distances of less than 10 km covered.
- Livestock accessibility to water increased considerably when compared with the preceding month. The distances covered were within the livestock grazing point hence less than a kilometre.
- No cases of conflict/human displacement / insecurity were reported in the course of the month under review. There was no livestock migration reported during the month.
- The body condition of livestock improved with the availability of water and pasture/browse. This has an impact on production and sales of livestock in the short run.
- There were reported cases of diseases ranging from lumpy skin diseases, contagious caprine pleura pneumonia and contagious bovine pleuropneumonia. The diseases were confirmed by the Veterinary Department and vaccination of the same was carried out across the district.
- Milk productions in the entire district increased compared with the preceding month. The positive indication is related to improved livestock body condition coupled with a few birth realized by different livestock species.
- Cattle prices increased when compared with preceding month. The increase has been attributed to pasture and water availability and accessibility which improved the body condition. Cattle traded at Ksh7,708 compared to Ksh6, 400 in October. The prices of goats reflect an increase when compared with the preceding month at Ksh1284 compared to Ksh1200 in October. Sheep prices continued to show an increase in trend due to availability of pasture and water. Sheep traded at Ksh900 , up from Ksh767 in October.
- The nutrition status of children below five years improved tremendously compared with the preceding month and falls within the long term mean. The percentage of those at risk of malnutrition in the district was 12.3% compared to 13.6% in October.

Current interventions

Non-food interventions

- Repair, servicing and procurement of livestock boreholes equipment continued in preparation for the next dry spell.

- Provision of seed for planting was made to the communities under hot community project.
- Disease surveillance, vaccination and livestock treatment continued.
- Community capacity building was carried out by Arid Lands Resource Management Project.
- Support to microfinance for communities continued during the month.
- Njaa marufuku Kenya project and national agriculture and livestock extension programme by Ministry of Agriculture continued to be implemented in the district.
- Mobile outreach services were carried out by the Ministry of Health.

Food aid

- EMOP relief food distribution covering a population of 156,000 beneficiaries.
- School-feeding programme provided by W.F.P targeting 42,069 children continued during the month.
- Supplementary feeding targeting 10,200 children under five, pregnant and lactating mother continued.

Recommendations to DSG and KFSM

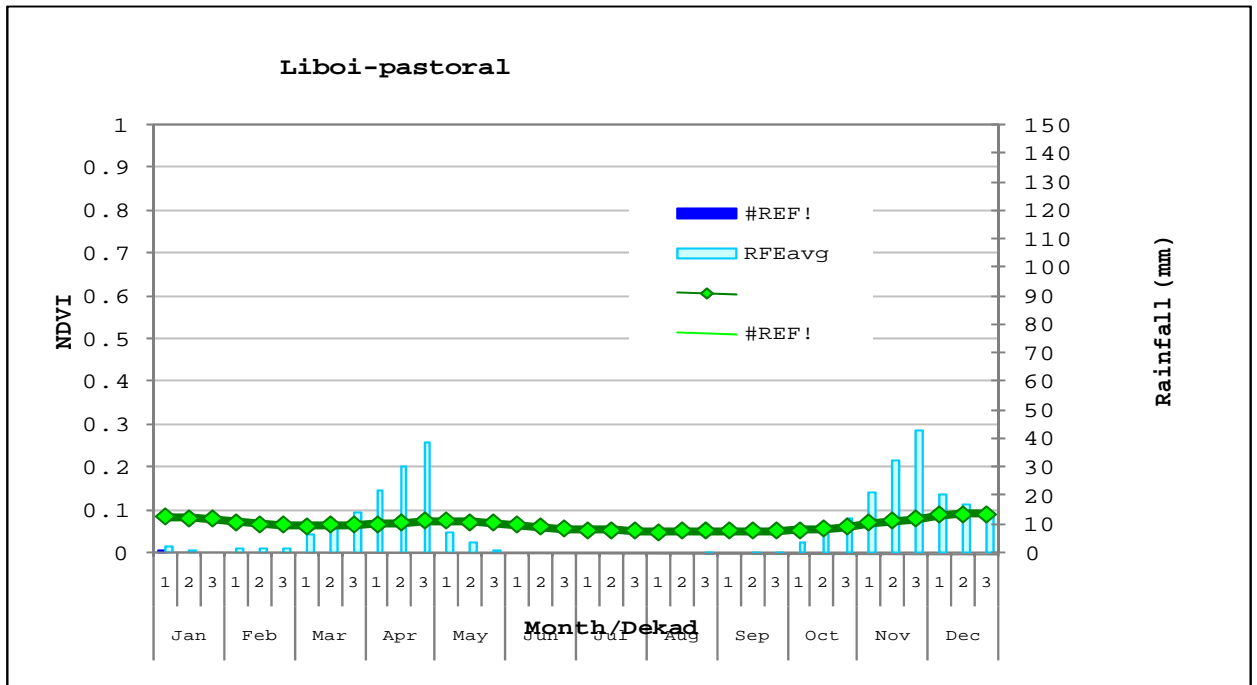
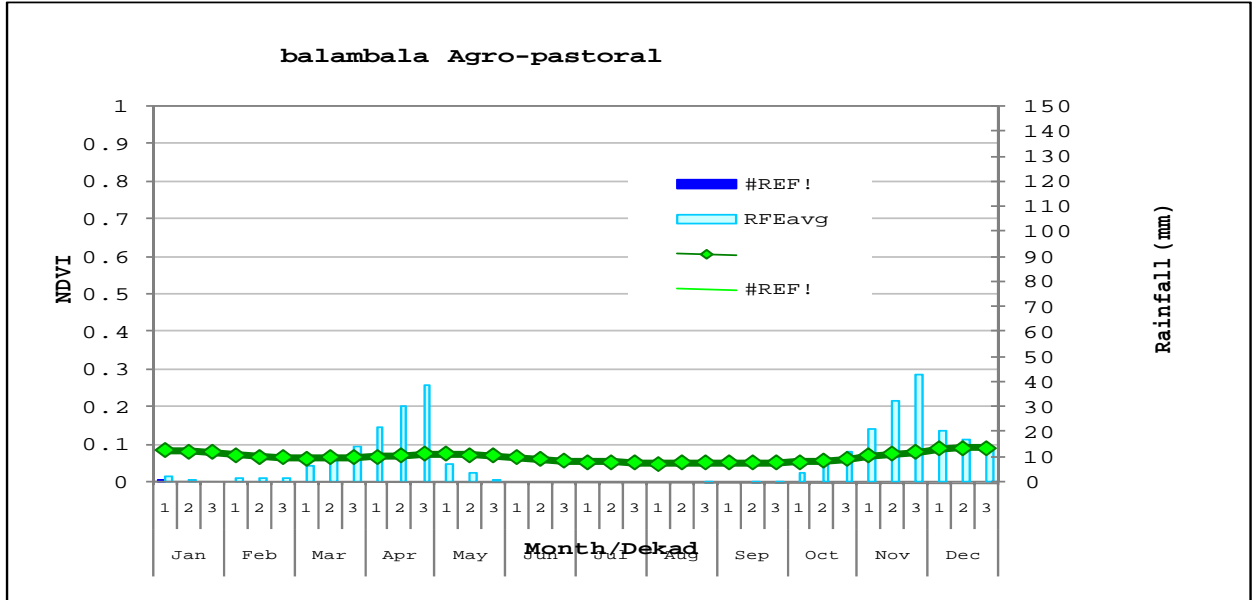
- Continue food aid until full recovery from the drought is achieved.
- Continue to support boreholes on repair, servicing and maintenance to enhance water supply during the dry spell.
- Support the rapid response teams to attend to any emergencies.
- Provide breeding stocks to livestock keepers to improve quality of breeds.
- Train communities on crop and livestock husbandry practices.
- Support communities on financing micro-enterprise development to enhance their livelihoods.
- Initiate restocking programme for those who lost their livestock.
- Continue to capacity build pastoral communities on peace building and conflict resolution
- Support small scale farms along River Tana in terms with farm inputs, construction of watering canals and value addition activities.
- Support the veterinary investigation laboratories on disease surveillance before any outbreaks are reported.
- Mobilize and sensitize communities on diversification of livelihoods.
- Continue to provide mobile outreach services for centre with no health facilities.
- Initiate a forestation programme to improve the denuded land.

1.0 Environmental condition (stability)

1.1 Rainfall

Rainfall was realised during the month. The distribution of the rains was fair to poor across the district. The northwest divisions of Banane, Danyere Mbalambala and Central

divisions received very little rains with an estimate of 9mm, 4.5mm, 1.1mm and 15mm recorded respectively. The divisions reported to have received good rainfall are Liboi 24mm, Dadaab 23mm, Modogashe 42mm, Shantaabak 10mm, Jarajilla 19mm and southern part of Bura 25mm. The rainfall distribution is summarized by the two sample divisions shown in the graph. Temperatures continued to increase when compared to the previous month but lies within the normal range.



Normalized difference vegetation index and rainfall estimated representation for pastoral and agro-pastoral livelihood zones.

1.2 Condition of natural vegetation and pasture

The quality and quantity of pasture and browse improved tremendously, with high regeneration /regrowth of forage realised thus improving the uptake for livestock and consequently reducing the trekking distances.

1.3 Water sources and availability

1.3.1 Use of water sources

The main water sources available to the pastoralists in the district were boreholes, River Tana, Benane springs, natural water holes and water pans. Water was available to livestock, with most of the natural water holes and water pans collecting substantial amount of water thus reducing congestions at water points.

1.3.2 Household accessibility to water

Water accessibility for households improved relatively compared to the preceding month. The distances covered by pastoralists reduced considerably, with an estimated average distances of less than 10 km covered.

1.3.3 Livestock accessibility to water

Livestock accessibility to water has continues to increase when compared with the preceding month. The distances covered are within the livestock grazing point. The rains have increased water and forage availability thus increasing the accessibility of the same, this becomes the resting period for boreholes. The availability and accessibility of water coupled with adequate forage leads to faster livestock recovery.

1.4 Emerging issues

1.4.1 Insecurity/Conflict/ Human displacement

No conflict over natural resource utilisation and human displacement was reported in the course of the month under review. However, the security situation remained tense along the Kenya/Somalia border.

1.4.2 Migration

There was no livestock migration reported during the month. This was related to the rain coverage of the entire district.

1.4.3 Implications on food security

The improved water availability and accessibility, improved forage cover, reduced cost of watering livestock has positive food security implication in the district.

2.0 Rural economy indicators (food availability)

2.1 Livestock production

2.1.1 Livestock body condition

The body condition of livestock improved with the availability of water and pasture/browse. This had a positive impact on production and sales of livestock in the short run.

2.1.2 Livestock health

There were reported cases of diseases ranging from lumpy skin diseases, contagious caprine pleura pneumonia and contagious bovine pleuropneumonia. The diseases were confirmed by the veterinary department and vaccination of the same was carried out across the district.

2.1.3 Milk production

Milk productions in the entire district increased compared with the preceding month. The positive indication was related to improved livestock body condition coupled with a few births realized by different livestock species. This is expected to continue with the rainy season picking up.

2.2 Crop production

2.2.1 Timeliness and status of various crop production activities

Irrigation farming was practiced along River Tana and the main crops grown under this system of production were bananas, pawpaw, melon, lemon, onions and tomatoes. However, the irrigation farming was constrained by lack of good market prices and over production in one type of vegetable and fruits in relation to the high cost of production.

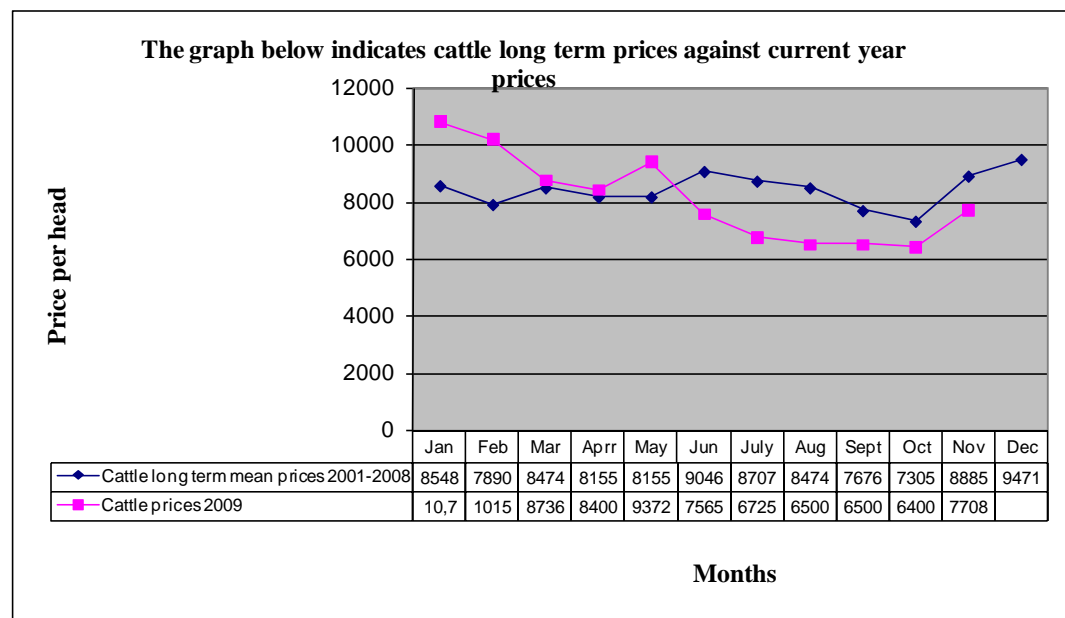
2.2.2 Pests and diseases

No crop pests or diseases were reported in the course of the month under review.

3.0 Access to food

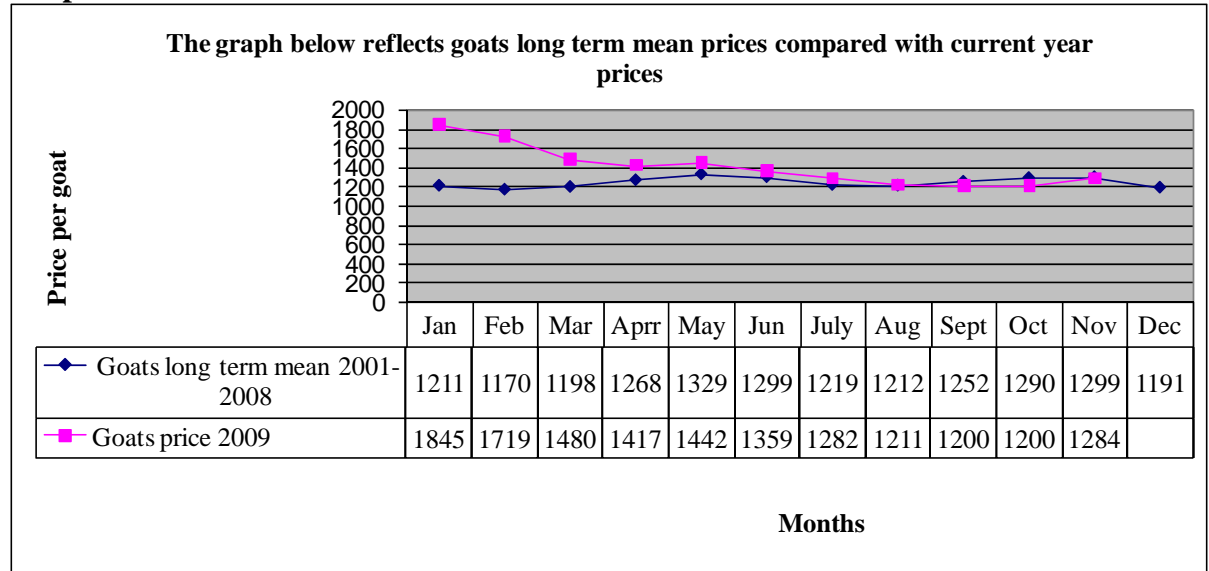
3.1 Livestock marketing

3.1.1 Cattle prices



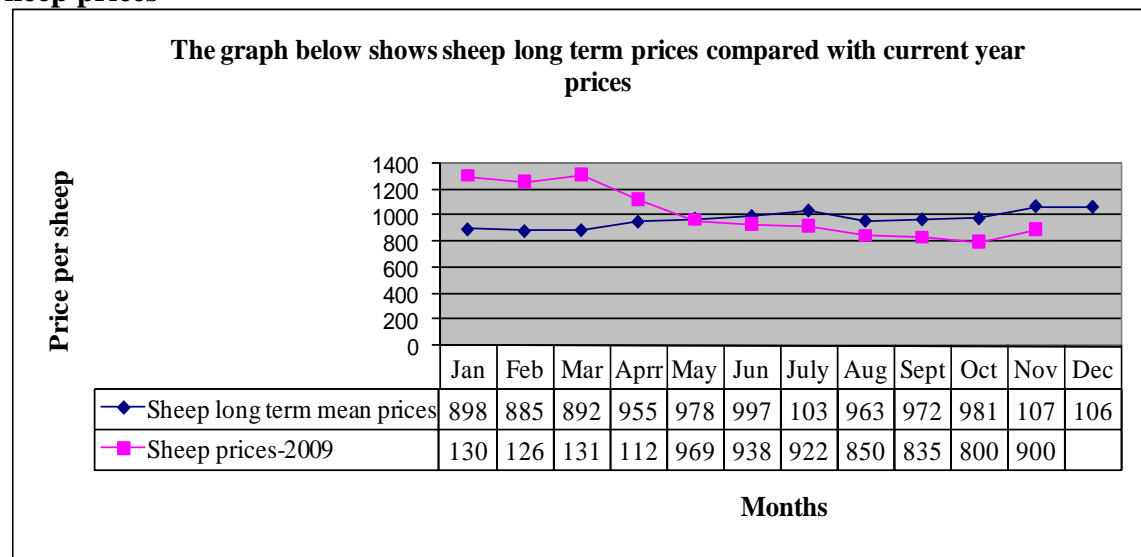
Cattle prices increased compared with preceding month. The average price was Ksh7,708 compared to Ksh6,400 in October. The increase was attributed to pasture and water availability and accessibility, which improved the body condition. The prices were, however, below the long term average price for the month in the subsequent years but the prices are expected to continue rising in the coming months.

3.1.2 Goat prices



The prices of goats increased compared with the preceding month. The average price was Ksh1,284 compared to Ksh1200 in October. This was mainly attributed to availability of browse, high feed conversion efficiency of goat and high demand of goats for slaughter during the Islamic festival (Idd).

3.1.3 Sheep prices



Sheep prices continued to show an increase compared with the preceding month. The increase in price was attributed to the improvement in pasture and water availability.

Sheep traded at Ksh 900, up from Ksh767 in October. The price was, however, below the long term mean for the month.

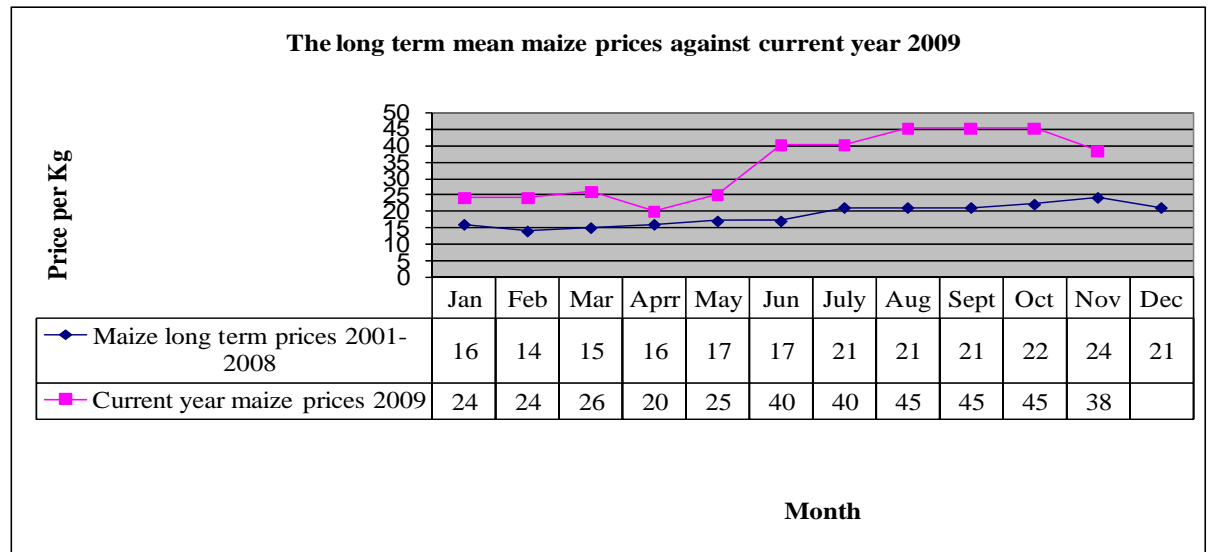
3.2 Livestock sales

The livestock sales rate increased when compared with the preceding month. This was due to the improving livestock prices, increasing demand and livestock owners relenting to repay the debts incurred during the drought period. The sales did not reach peak due to some pastoralists withholding livestock for fattening and waiting for market prices to increase considerably.

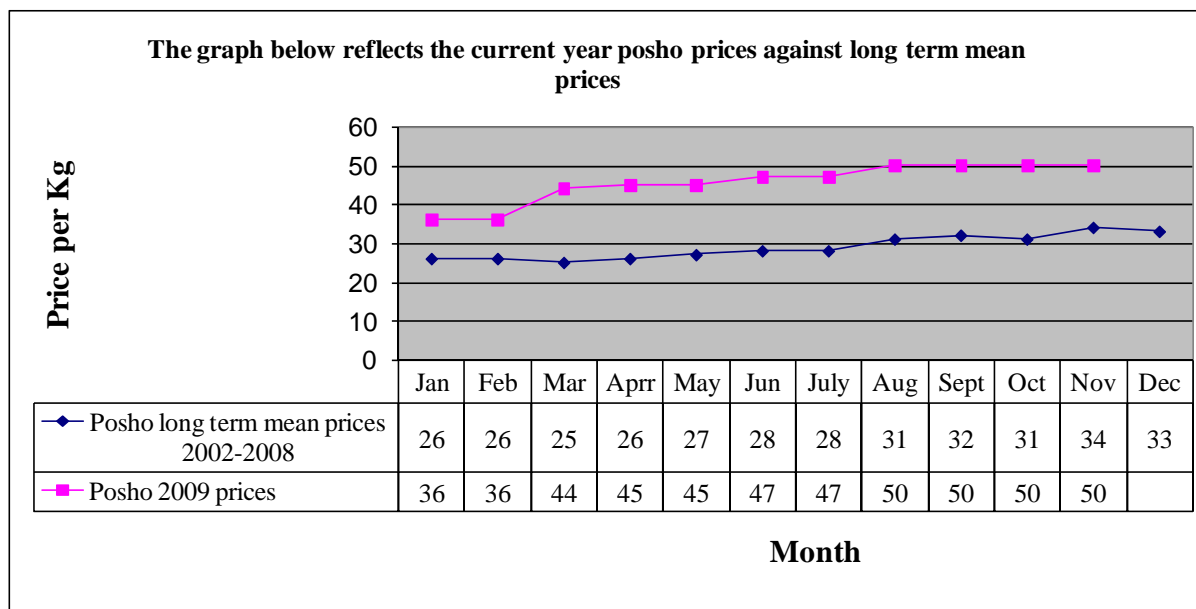
3.3 Food prices

3.3.1 Maize prices

Maize price reduced when compared with the preceding month; however this is above the long term mean prices. The reduced price was attributed to availability of cereals from general food distribution which was carried out in two cycles at once. This was due to acute shortages of maize at household level. The price of a Kg of maize was Kshs.45 in October and Kshs.38 in November.



3.3.2 Posho (locally milled and Jogoo) prices



The prices of posho and jogoo, which are both end products of maize, remained stable when compared with the previous month but was above the long term mean. This was attributed to the price of parent product (maize), which remained unchanged. The price remained stable at Ksh50 per kilo.

3.3.3 Purchase price of other food commodities

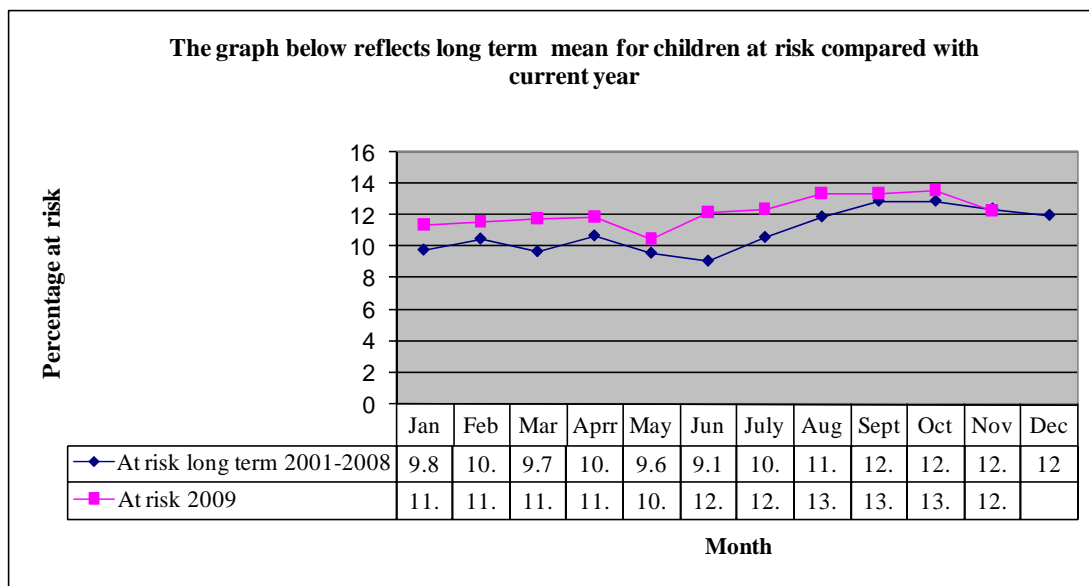
The prices of other essential food products show an increase when compared with the preceding month and it is above the normal. This is brought about by the current inflation of food commodities in the country and due to market liberalization.

3.4 Implications on food security

Improving livestock prices, availability of livestock products, reduced cost of livestock management and availability of vet services to pastoralist is an indication of positive food security implications.

4.0 Human welfare indicators (Stability)

4.1 Nutrition status



Number of children=1384

- The nutrition status of children below five years improved tremendously compared with the preceding month and falls within the long term mean. The percentage of those at risk of malnutrition in the district was 12.3% compared to 13.6% in October. The improvement was attributed to availability of livestock products and improved household income through sales of livestock.

4.2 Human health

- There are suspected and reported cases of malaria and diarrhea infection. The condition is anticipated to increase due to the rains which create good medium for breeding and water becomes source of contamination.

4.3 Flagged areas

- There were no flagged areas but due to the current rains and consequent flooding, water-borne disease may break out and cause damage to the population.

5.0 Current interventions

5.1 Non-food interventions

- Repair, servicing and procurement of livestock boreholes equipment continued in preparation for the next dry spell.
- Provision of seed for planting was made to the communities under hot community project.
- Disease surveillance, vaccination and livestock treatment continued.
- Community capacity building was carried out by Arid Lands Resource Management Project.
- Support to microfinance for communities continued during the month.

- Njaa marufuku Kenya project and national agriculture and livestock extension programme by Ministry of Agriculture continued to be implemented in the district.
- Mobile outreach services were carried out by the Ministry of Health.

5.2 Food aid

- EMOP relief food distribution covering a population of 156,000 beneficiaries.
- School-feeding programme provided by W.F.P targeting 42,069 children continued during the month.
- Supplementary feeding targeting 10,200 children under five, pregnant and lactating mother continued.

5.3 Coping strategies

- Petty trade becomes an alternative livelihood.
- Reliance on remittances.
- Credit and borrowing was a major part of coping strategy.

6.0 Recommendations to DSG and KFSM

- Stabilise food aid until full recovery from the drought is achieved.
- Continue to support boreholes on repair, servicing and maintenance to enhance water supply during the dry spell.
- Support the rapid response teams to attend to any emergencies.
- Provide breeding stocks to livestock keepers to improve on quality of breeds.
- Train communities on crop and livestock husbandry practices.
- Support communities on financing micro-enterprise development to enhance their livelihoods.
- Initiate restocking programme for those who lost their livestock.
- Continue to capacity build pastoral communities on peace building and conflict resolution.
- Support small-scale farms along River Tana in terms with farm inputs, construction of watering canals and value addition activities.
- Set up contingency fund across the departments in a coordinated structure.
- Support the veterinary investigation laboratories on disease surveillance before any outbreaks are reported.
- Mobilise and sensitise communities on diversification of livelihoods.
- Continue to provide mobile outreach services for centre with no health facilities.
- Initiate afforestation programme to improve the denuded land.
- Strengthen stakeholder's co-ordination and participation in development activities.