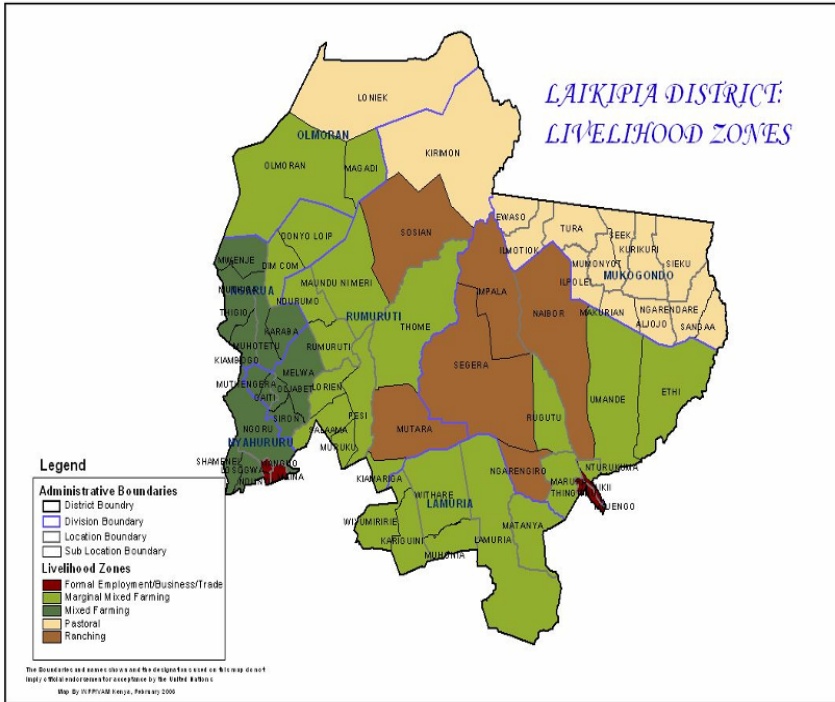




**OFFICE OF THE PRIME MINISTER  
MINISTRY OF STATE FOR THE DEVELOPMENT OF NORTHERN KENYA AND OTHER ARID LANDS  
ARID LANDS RESOURCE MANAGEMENT PROJECT II**

**DROUGHT MONITORING BULLETIN, NOVEMBER 2009**

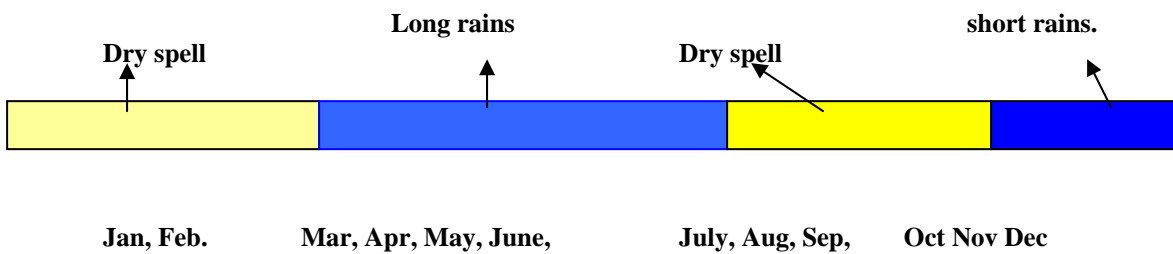
**Laikipia East, West and North districts**



**Warning Stages**

Livelihood Zone	Warning Stage	Trend
Pastoral All Species	Alarm	Improving
Agro – Pastoral	Alarm	Improving
Mixed Farming	Alarm	Improving
Marginal Mixed Farming	Alarm	Improving

**Seasonal Calendar**



### **Situation overview**

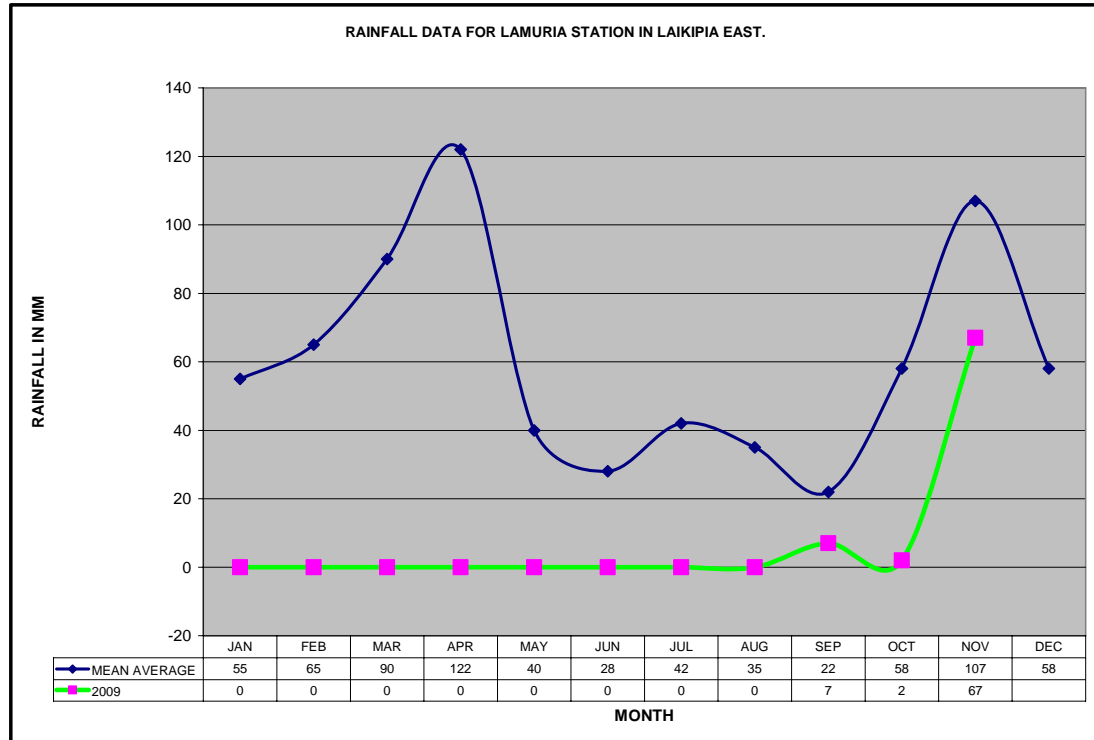
- The rains stopped during the month of November, with insignificant showers in the districts but signs were strong towards the end of the month.
- Pasture started regenerating following the good showers received in October but it is not expected to sustain livestock for long, especially cattle, though the shoats are getting enough.
- Water was available following the heavy rains received in October but if the prevailing dry spell experienced in November continues seasonal rivers will dry up.
- Farmers planted crops in October and are expected to start weeding their farms but the rains have stopped though there are high hopes that they might continue.
- Majority of the livestock that was residing on Mt Kenya moved back to their respective homes, though a big number died due to the drought and diseases.
- Milk production was still very poor owing the poor body condition of the livestock and the poor pasture following cessation of the rains in November.
- The nutrition status of children below five years improved, with the percentage of those rated at risk of malnutrition dropping to 11% from 13 in October.
- Food stress was evident as the EMOP did not distribute any food in October and November.

### **Recommendations to DSG and KFSM**

- Urgent food for the affected residents as there are cases of severe food shortage in the entire district as the next harvest is expected in March and cattle have not recovered from the severe drought.
- Food supply to the under five very urgently required despite the fact that the nutrition status is improving but it's still on the poor side.
- Poverty survey to be carried out to determine the poverty levels as the farmers under-went major losses during the drought period.
- Avail urgent relief food as the EMOP did not distribute any food in October and November.
- Poverty survey to be carried out to determine the poverty levels as the farmers under- went a major loss during the just ended drought.

## 1.0 Environmental indicators (Stability)

### 1.1. Rainfall



Rainfall data provided by (EWASO NYIRO RIVER CATCHMENT AUTHORITY) from Matanya station in Lamuria division this data does not cover the entire district Matanya is an Agropastoralists zone but the situation is different in the rest of the livelihood zones.

- The long awaited rains stopped in the month of November in all the districts after performing poorly, with the worst being Rumuruti and Mukogodo. The farmers who planted in October were disappointed with the cessation of the rains although signs of improvement were evident towards the end of the month as signs of rains were showing. The situation was the worst case in recent years.
- The expected el-Niño rains had given a lot of hope to the farmers, who are now very disappointed.

### 1.2 Condition of natural vegetation pasture

The pastures started regenerating but performed poorly due to the inadequate rains and cannot sustain cattle and shoats for very long. In Mukogodo the livestock started showing signs of improvement but they were still very weak.

### 1.3 Water sources and availability

Rivers started flowing following rains but most of the dams silted due to the long drought that left the soil bare, thus the first rains carried a lot of loose soil into the dams and pans.

## **1.4 Emergencies issues**

### **1.4.1 Insecurity / human wildlife conflicts**

Buffaloes wrecked havoc in Mukogodo, Rumuruti and central divisions. These buffaloes were previously in conservancies.

### **1.4.2 Migration /human displacement**

The livestock moved back to their respective districts.

## **2.0 Rural economy indicators (Food availability)**

### **2.1 Livestock production**

The livestock farmers were hit hard by the last drought that wiped out a large number of livestock and the few remaining are still very weak. The number of the cattle being brought to the markets was small and the farmers are not ready to sell their cattle now as they have hopes that the situation will improve and thus the markets are flooded with shoats.

#### **2.1.1 Livestock body condition**

- The body condition of livestock was poor, though improving owing this to the improvement of pastures but the situation might change if the expected rains do not go on in December.
- Cattle, which were very few in markets, fetched very little money owing to the poor body condition. The markets in Dol Dol registered very poor sales in comparison to Rumuruti markets.

#### **2.1.2 Livestock diseases**

There are high chances of outbreak of diseases if the rains continue. Diseases such as Rift Valley Fever and foot and Mouth Disease are highly possible to occur.

## **2.2 Crop production**

### **2.2.1 Timeliness and condition of various crop production activities**

Crops were at germination stage awaiting weeding in some of the farms that planted in October. The main crops planted were maize and beans. More farms had been planted in anticipation of the el-Niño rains.

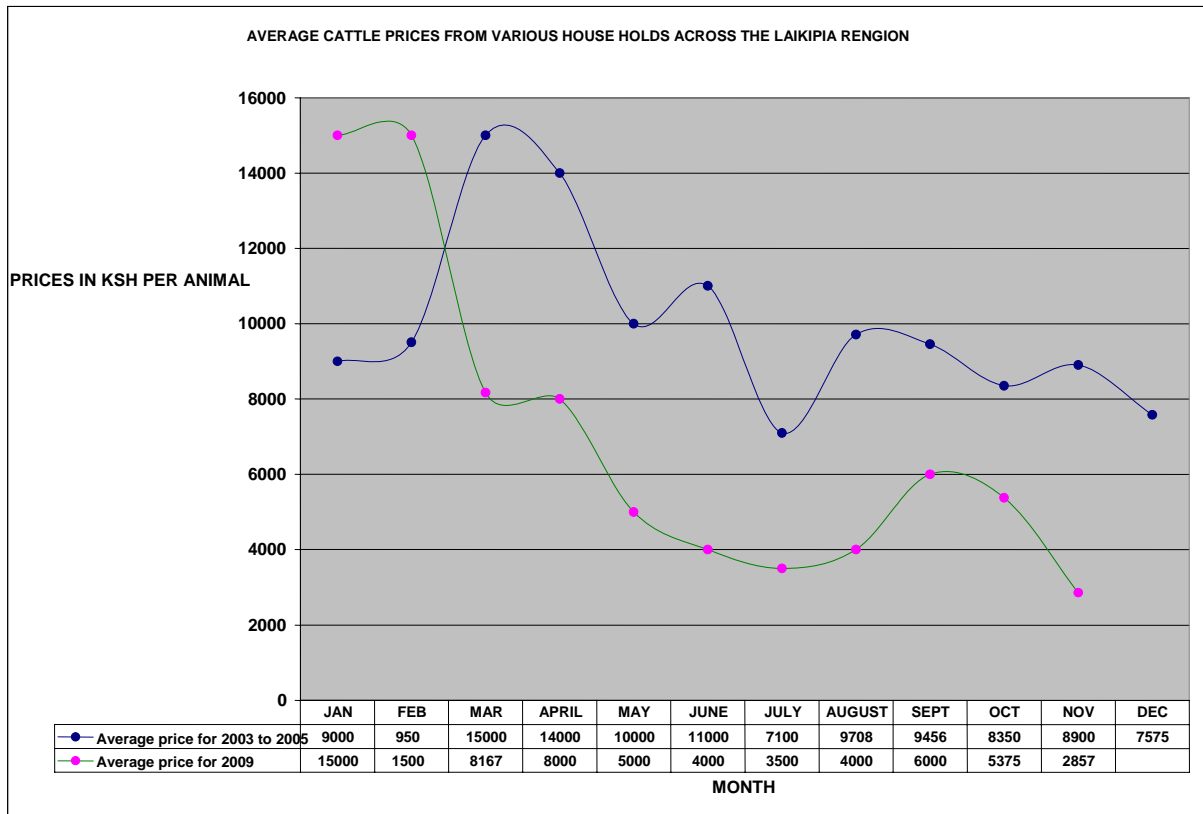
### **2.2.2 Harvests**

The earliest harvest expected is of beans in January. Maize might be ready in March if the rains continue as expected.

## **2.3 Implication on food security**

At the moment the crops are yet to grow and the expected harvest is in March.

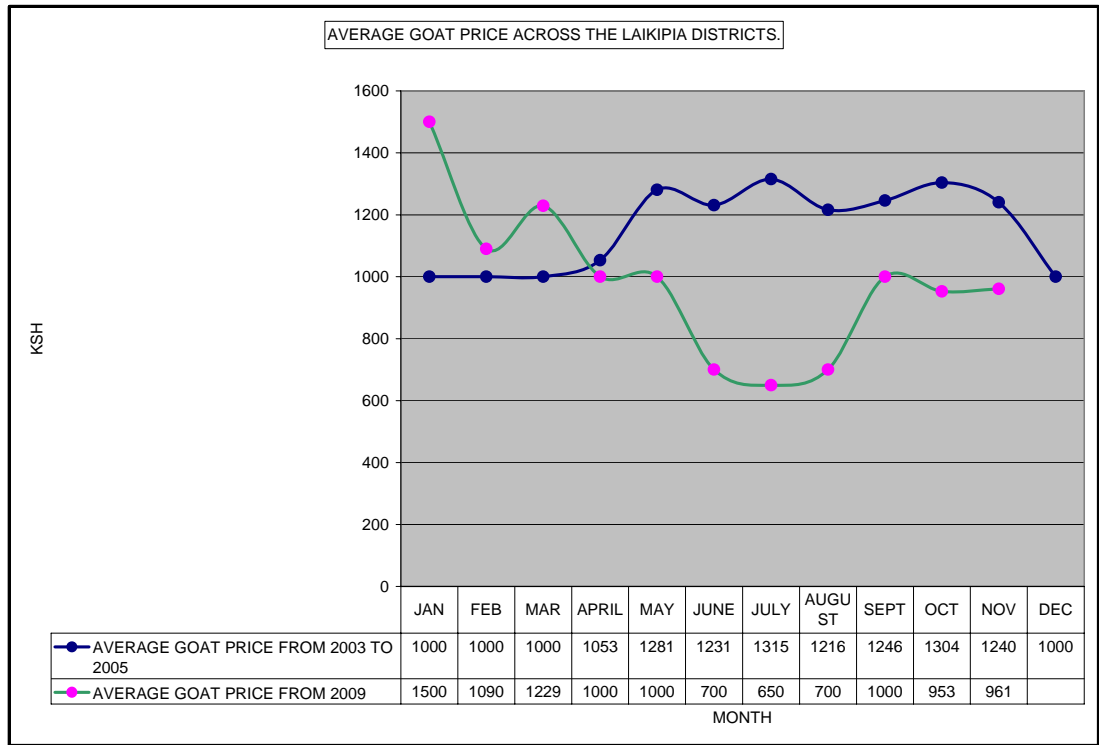
**3.0 Access to food**  
**3.1 Livestock marketing**  
**3.1.1 Cattle prices**



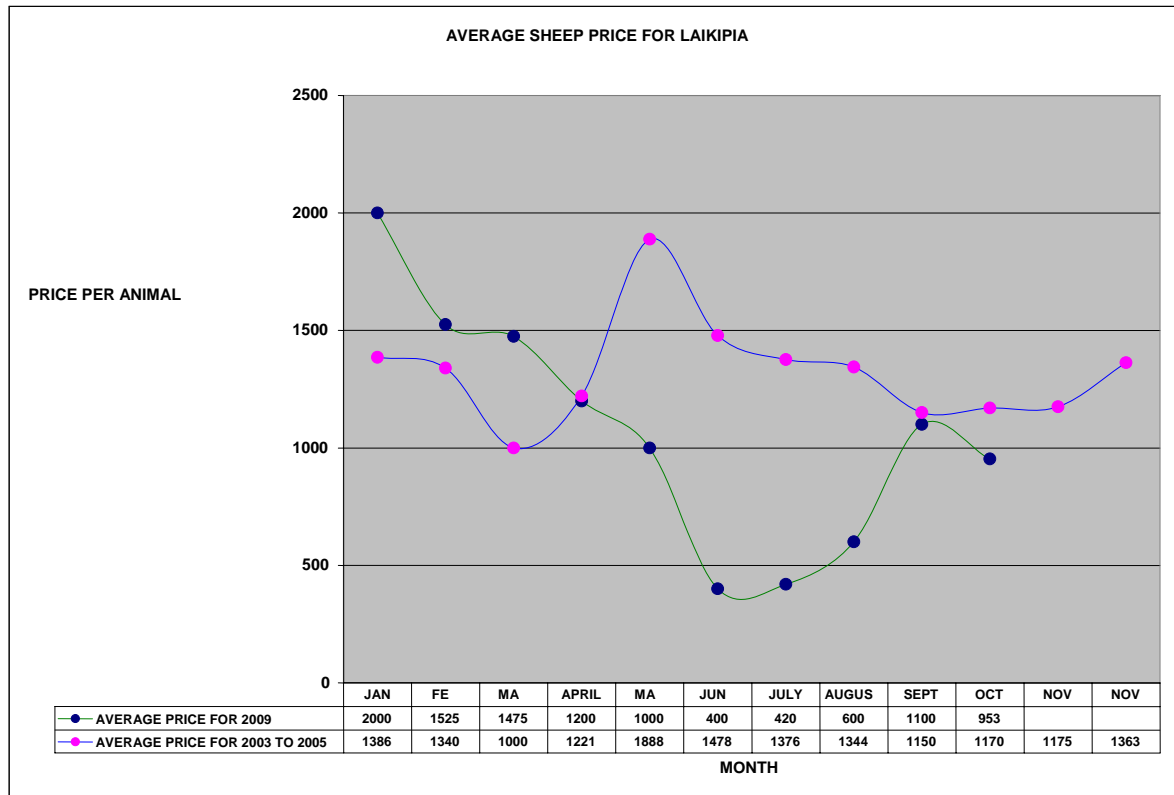
Cattle prices dropped due to the poor body condition. The average price was Ksh2857 compared to ksh5375 in October. Markets in Dol Dol registered very poor sales compared to Rumuruti markets. Farmers were not willing to sell their cattle with the intention of fattening them during the ongoing rains.

**3.1.2 Goat prices**

Goats were the main livestock in the markets as cattle fetched very little money. Goat and sheep sales are expected to rise due to upcoming Christmas festivities. The average price of goats was Ksh 961 compared to Ksh953 in October. The prices of sheep were slightly poor as they were still weak from the drought and still recovering.



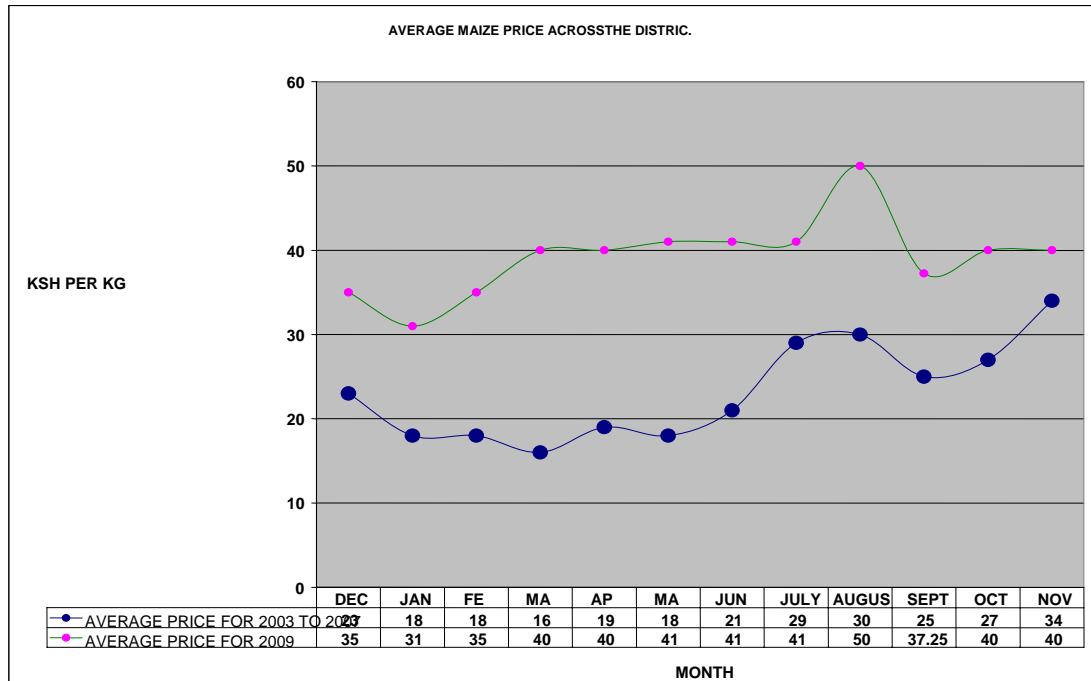
### 3.1.3 Sheep prices



Sheep prices declined during the month. The average price was Ksh853 compared to Ksh 1,100 in October.

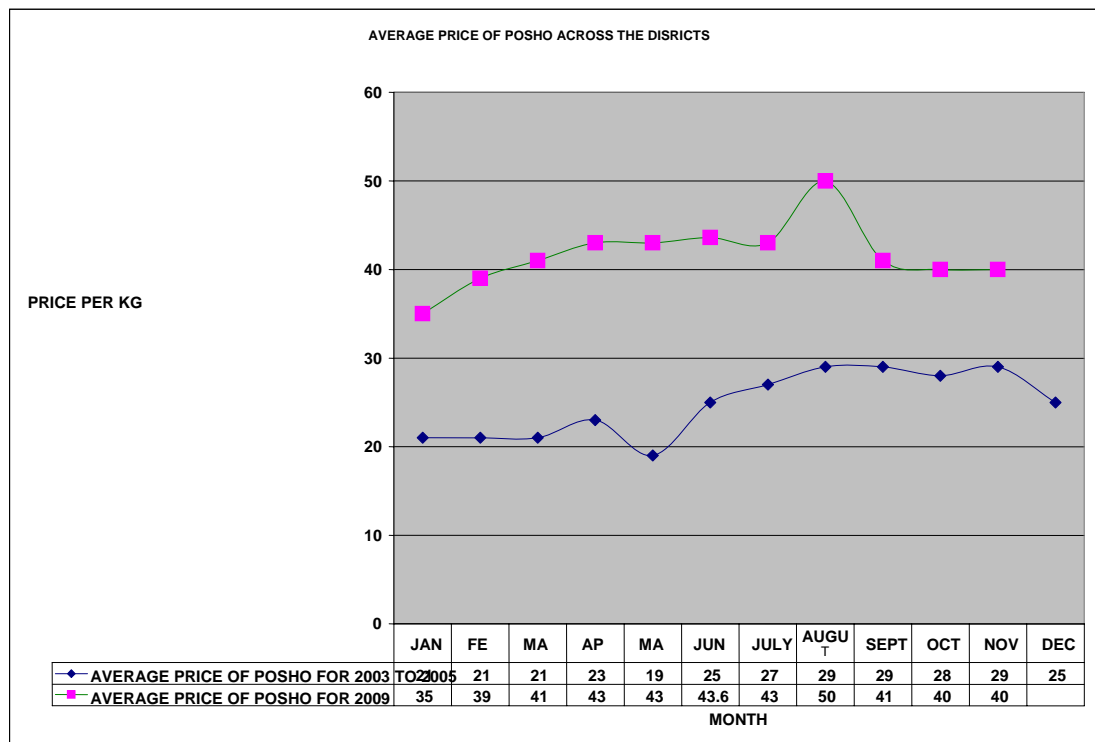
### 3.2 Food prices

#### 3.2.1 Maize prices



- Maize in the district was mainly imported from Mombasa but the prices were still on the higher side. The average price was Ksh40 per kilo, the same as the previous month.

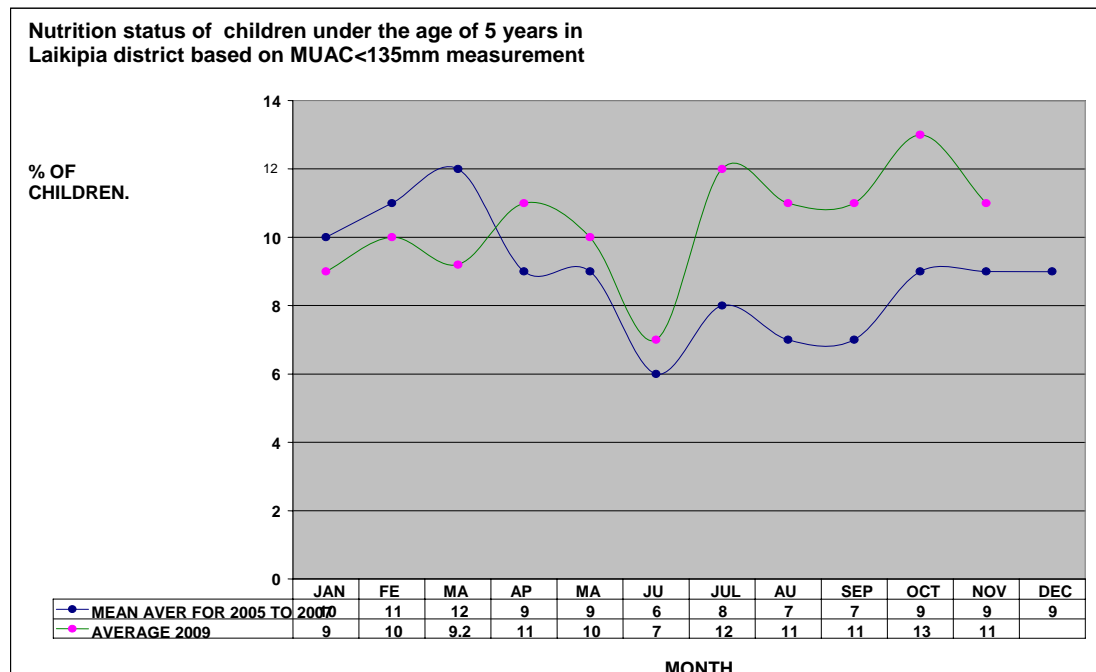
#### 3.2.2 Posho prices



Posho, like maize, is a staple food used by majority and its prices were still on the higher side. Maize and posho prices are expected to go down in March if there are any harvests of the quick maturing variety of maize.

#### 4.0 Human welfare indicators (Utilisation of food)

##### 4.1 Nutrition status



- The nutrition status of children below five years improved slightly during the month, with the percentage of those rated at risk of malnutrition dropping to 11% from 13% in October. The slight improvement was due to slight change in milk production but the percentage was still high compared to the long term mean of 9%.
- There is need for supplementary feeding, especially in Laikipia North. Food stress was evident as the EMOP did not distribute any food in October and November.

##### 4.2 Human health

- Cases of cold related diseases increased at health centres.

#### 5.0 Current interventions

##### 5.1 Food aid

EMOP food distribution stopped in October and November due to the fact that there was no food in the stores and the WFP had no supplies.

##### 5.2 Coping strategies

- Charcoal burning
- Sale of honey.

#### 6.0 Recommendations to DSG and KFSM

- Urgent food for the affected residents as there are cases of severe food shortage in the entire district and the next harvest is expected in March. Moreover, cattle have not recovered from the severe drought.
- Food supply for children under five years is urgently required despite the fact that the nutrition status is improving but its still on the poor side.
- Poverty survey to be carried out to determine the poverty levels as the farmers underwent major losses during the drought period.