



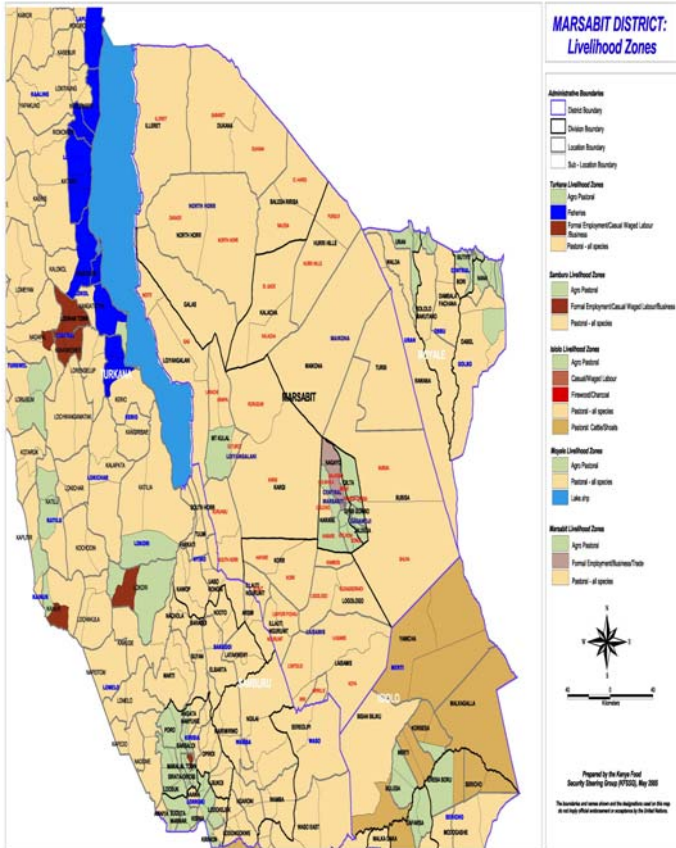
OFFICE OF THE PRIME MINISTER

**MINISTRY OF STATE FOR THE DEVELOPMENT OF NORTHERN KENYA AND OTHER ARID LANDS
ARID LANDS RESOURCE MANAGEMENT PROJECT II**

DROUGHT MONITORING BULLETIN, NOVEMBER 2009

Marsabit, Laisamis and Chalbi districts

Warning Stages



Livelihood zone	Warning Stage	Trend
Agro-Pastoralist	Alarm	Improving
Pastoral-All species	Emergency	No change
Fishermen/Pastoralist	Emergency	No change

Seasonal calendar

Short Dry Spell	Long Rains	Long Dry Period	Short Rains
Jan Feb Mar	Apr May Jun	Jul Aug Sep Oct	Nov Dec

Situation overview

- Contrary to all predictions, rainfall performance was very poor during the month under review. Only very few areas in the vast Marsabit district recorded some rains. Higher parts of Mt Marsabit received some 5 days showers, the highest number of days of rainfall received in the region. Marsabit north (Chalbi) district, Hurri hills recorded two days showers and the rest of the areas recorded a few hours of showers.
- The quality and quantity of forage were adequately recharged only on Mt Marsabit, and parts of Laisamis division that borders Mt Marsabit and Mathew ranges. The rest of the lowlands areas reported inadequate quantities of pasture availability, thus triggering long distance livestock migration to pockets of comparatively improved pasture availability
- In Loiyangalani division even the normally wetter Mt. Kulal area, received minimal rainfall amounts hence resulting to livestock migration to Mt. Marsabit and Laisamis division. This was reminiscent of the most severe 1971 to 1973 drought.
- Water sources were adequately recharged only on parts of Mt Marsabit and in areas around Mathew ranges at Ngurunit, Namarei and Manyatta Lengima, and Loglogo location and is expected to sustain livestock and domestic use for the coming two months.
- Body conditions of all livestock species deteriorated in areas where no rainfall was received, especially in lowland areas, thus leading to increased mortality rates among shoats, cattle and donkeys' species as a result of distant livestock migration to the few wet areas within and without district boundaries. This situation was out of normal trend at this time of the year.
- Cattle prices decreased by a margin of 53.7% compared to long term averages of the years 2000 to 2008, while goat prices reduced by 63% as a result of deteriorating body conditions and depressed sales rates at terminal markets. The situation is tending towards total market collapse for livestock sector.
- EMOP relief allocation continued in all food distributing centres in six divisions targeting over 72,000 beneficiaries in the larger Marsabit district. GoK relief food was minimally with only 4-5% of the populations stating to have received the food.
- Few cases of malaria and diarrhoea were reported among children and few adults, which was within normal range at this time of the year. Cholera outbreak was reported in Illeret location of Marsabit north district resulting to at least two deaths. This disease was believed to have originated from Turkana district, and there are fears it could spread to other parts of the district.
- The nutrition status of children below five years improved during the month, with the percentage of those rated at risk of malnutrition dropping to 25.9 from 34.1 in October.
- Cases of insecurity (banditry and livestock raids), incidents of highway banditry declined after the district security committee of Laisamis district organized joint one-day meeting at Serolipi in Samburu East district and the leaders condemned the banditry.

Ongoing interventions (food and non foods)

- District-wide (EMOP) general relief food distribution continued targeting 80,442 direct beneficiaries out of the current population of approximately 160,747 in greater Marsabit district.
- Water trucking (tuckering) continued in Marsabit (Chalbi) district. Although there is serious demand for water in Hurri Hills, Balesa and El Hadi, El Beso and parts of Burgabo areas few actors were available to provide support to water trucking. Only Solidarities continued with water trucking it started in September to 15 November. PISP and GoK abandoned trucking at end of October in expectation of rains but stated later in the month to several sites in Chalbi districts. The water situation in Chalbi district remains as bad as before the rains were reported elsewhere.
- No supplementary feeding program was continued in the previous two months.
- Construction of water sources continued on Mt. Marsabit.
- Provision for fuel and lubricants to boreholes continued in drought stressed parts of greater Marsabit district.-MOW, ALRMP II.
- A three-day training workshop on peace initiation at Dukana division for women peace forum and DPC's, leaders and communities- UNDP/ALRMP II.
- Three-day peace meeting was conducted at Obok area in southern Ethiopia with leaders and DPC's and communities- UNDP/ALRMPII
- A three-day training was conducted at Torbi division in Marsabit north district between Leaders and District Peace Committees- UNDP/ALRMPII
- Provision for veterinary services includes, vaccinating 5,564 cattle (CBPP), 11,000 shoa't's vaccination as only 13,850 doses are in stock.- Veterinary services.
- District rapid assessment teams was conducted in greater Marsabit district to assess and recommend for intervention measures- ALRMPII

Recommendations to KFSM and DSG

- Close monitoring in all food sectors in the coming month with a view of mitigating adverse effects of the prevailing drought on household food access in most parts of the greater Marsabit district.
- Monitoring livestock, water sectors and welfare indicators to avert possible adverse outcome in face failed rains.
- Short rains Assessment should be conducted to pave way forward for drought intervention measures – KSFSSG/ALRMPII
- Supply the therapeutic relief (CSB) and scale up supplementary (therapeutics) feedings with dry feeding centres from the current 3,440 beneficiaries (< 5 years children, lactating, pregnant mothers and the aged)in twenty two centres to 8,800 including the HIV patients in the community dispensaries and the district health facilities.
- GoK relief food should be consistently distributed to subsidize the emergency food insecurity situation in greater Marsabit district targeting at least 20% of the population, especially in Marsabit north and south districts where food shortages are still rampant.

- Livestock sector should initiate de-worming and vaccination campaigns with prevailing wet season and incoming livestock influx from across different borders including Ethiopian and other district like Samburu and Arbijaan.
- Fostering of peace should be encouraged within and without district borders as livestock movement are increasing beyond their normal dry season grazing areas.
- Promote improved sanitation conditions to prevent breakout of communicable diseases especially to cholera which is making rounds in the region and several areas are potentially prone areas.
- Farm input measures should be put in place to control army worms and other seasonal pest diseases – MOA.
- Anti-cholera and other dysenteries treatments should be availed to Loiyangalani and Illeret locations which are currently affected by chigela and cholera infections.

1.0 Environmental indicators (stability)

1.1 Rainfall

- Short rains were only recorded in areas around Mathew ranges and its surrounding areas of Korr, Namarei, Manyatta Lengima and Illaut and Afharen sub locations of Marsabit south district, and areas around Mt. Marsabit. The rainfall amounts were Mt. Marsabit (43.8mm), and Mt. Kulal 38mm in an average only four to five days showers which is far below normal monthly amounts.
- The areas that received some rains are mostly the high elevation areas in Laisamis (Marsabit South) district especially along Ndoto –Mathew ranges, and areas of Laisamis division (including Loglogo and Korr locations) bordering Mt. Marsabit. This weather pattern was outside its normal prediction.

1.2 Condition of natural vegetation and pasture

- Forage conditions improved on Mt. Marsabit, Hurri hills and Mathew ranges. Other areas, including Mt Kulal area, received minimal amount of rains that resulted in historical livestock migration which was lastly experienced on 1971 to 1973 prolonged drought periods. This was attributed to failure of the previous three seasons. Comparatively, all lowland parts continued to suffer serious drought impact.
- Forage availability and accessibility is expected to sustain livestock only until next month and if the current trends persists, the significant livestock mortality especially of cattle and shoats due to starvation, is imminent. The few and isolated areas that received some rains faced heavy livestock concentration.

1.3 Water sources and availability

1.3.1 Use of water sources

- The main sources of water for both livestock and domestic use failed to recharge in most of the lowland areas and Hurri Hills as result of the failed short rains. But, areas around Mt Marsabit and Mathew ranges, which was previously faced with acute water shortages, had the highest recharge of water sources. In these areas, distances between livestock and water sources reduced to an average of 12km and 1-2km for domestic use. However, even for these areas relief from water stress will be temporary if short rains fail completely and problem of water scarcity is expected to increase again after the coming months.
- In lowland areas and Hurri Hills water trucking was ongoing, especially by the NGO Solidarities, Ministry of Water and ALRMP.
- The main water sources in both low and highlands areas were boreholes, traditional wells, water pans, springs, shallow wells, the Lake Turkana.

1.3.2 Distance to water sources

- Average distances to water sources for domestic use significantly decreased from an average of 18kms the previous month to 3-4 kms while for livestock use distances in some areas remained at 28km especially for households that remained in the dry season grazing areas.
- When actors stopped water trucking in some areas, many households in western slopes of Hurri Hills had to be moved by trucks to nearest water points of Balesa and EL Gade. This necessitated resumption of water trucking due to severe stress of households, especially around Hurri Hills.
- Generally, the water stress is expected to worsen in the coming month.

1.4 Emerging issues

1.4.1 Insecurity/ Conflict

- Security situation fairly improved in most parts of the greater district, especially along the Marsabit Isiolo highway. This improvement was attributed to district leaders including the government officials reining in insecurity issues in the region. However, theft of ten camels was reported in Marsabit central district and they were not recovered.
- A cross border meeting was held in Hobok area of southern Ethiopia where an agreement was reached on compensation for past insecurity incidents. The community members on the Ethiopian side agreed to pay the community from Dukana area of Kenya for breach of peace agreement previously signed.

1.4.2 Migration

a) Livestock migration

- Livestock migration increased as a result of the short rains. In the pastoral livelihood of North Horr division, livestock was concentrated in the northern part Dukana, Sabarei and in southern Ethiopian border and Koobi Fora. While livestock from Maikona division was concentrated around Hurri hills and towards Arbijaan in Wajir west district.

- Livestock from Agro/pastoral livelihood of Marsabit central and Gadamoji divisions are still at Sololo of Moyale district and others to Arbijaan in Wajir west district.
- Livestock from Mt. Kulal and Loiyangalani locations migrate toward western foot slopes of Mt. Marsabit and around Afharen sub location.

b) Human migration/ displacement

- Human migration was occasioned by livestock migration and when livestock moved long distances, only able persons followed them. Consequently, most households were stuck without livestock, putting stress on children, women, and the aged. In some cases households had to be moved to centres because of lack of water and food. Such cases were recorded in Balesa area of Dukana division in Chalbi district. This was not normal situation at the time of the year.

1.5 Implications on food security

- Depleted milk availability at household level compounded food insecurity situation among pastoral livelihoods. The food shortages are expected to continue until July 2010 and were attributed to thin livestock body conditions and far livestock concentrations from their homesteads.
- The regulated short rains availability continued to frustrate efforts to attain food security at household level in greater Marsabit district.

2.0 Rural economy indicators (Food availability)

2.1 Livestock production

2.1.1 Livestock body condition

- Livestock health in all areas was at recovering stages, particularly for cattle and shoats while it was good for camel species. Generally, the deteriorated body condition among shoats and cattle resulted in about twenty two percent mortalities at the onset of the prevailing season and starvation.
- Distances to pastures and water decreased by 8kms on hilly parts and reduced to between 26-30kms in lowlands .

2.1.2 Livestock diseases

- Contagious Caprine Pleural –pneumonia (CCPP) and worm infestation became endemic among shoats and few cases of Contagious Bovine Pleuro Pneumonia (CBPP) in cattle species were reported in some parts of greater district and remaind a threat.
- Livestock deaths were reported among cattle species while shoats' remained the second most affected. Comparatively, livestock diseases such as enterotoxaemia, worms, bloat and PPR among shoat's and bloat, CBPP, RVF, Tripanosimiasis and FMD diseases among cattle and camel species were expected seasonal infections.

2.2 Implications on food security

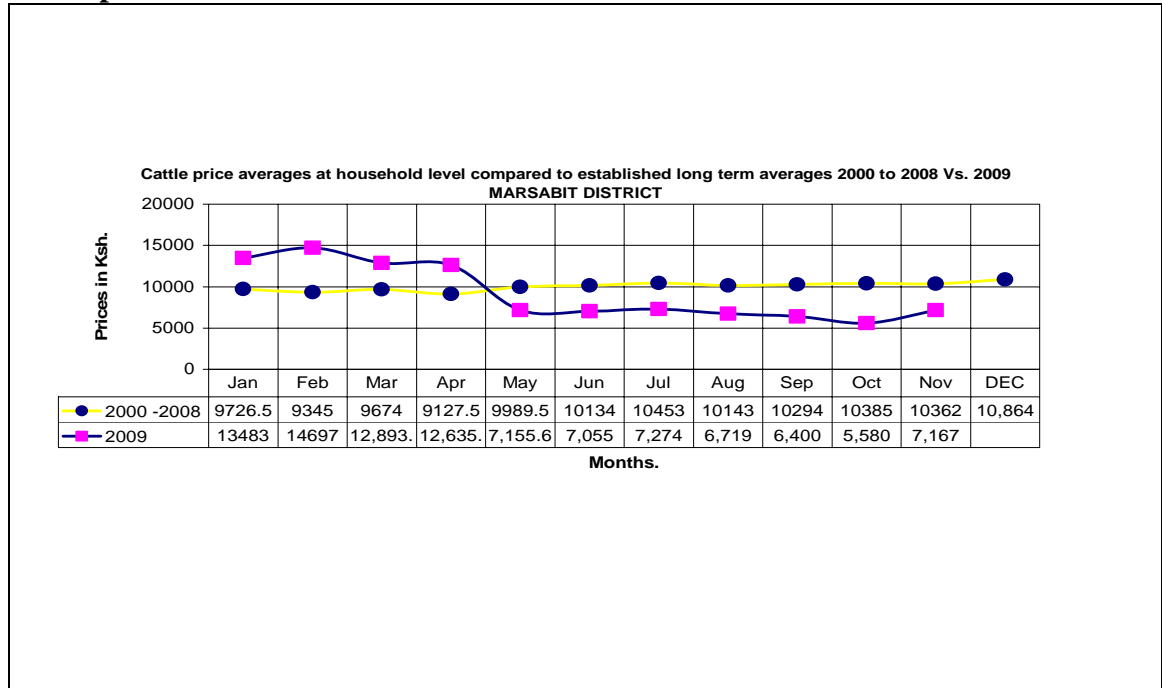
- Food insecurity situation remained at alarming and emergency situation in all areas of greater Marsabit district.

- Collapsed livestock prices as a result of poor body condition and collapsing terminal market negatively affected food security situation at household level especially among pastoralist and fisher folk communities. Despite this, pastoralist and fisher folk communities were at emergency stage while Agro/Pastoral livelihoods remained at alarm stage of the drought cycles.

3.0 Access to food

3.1 Livestock marketing

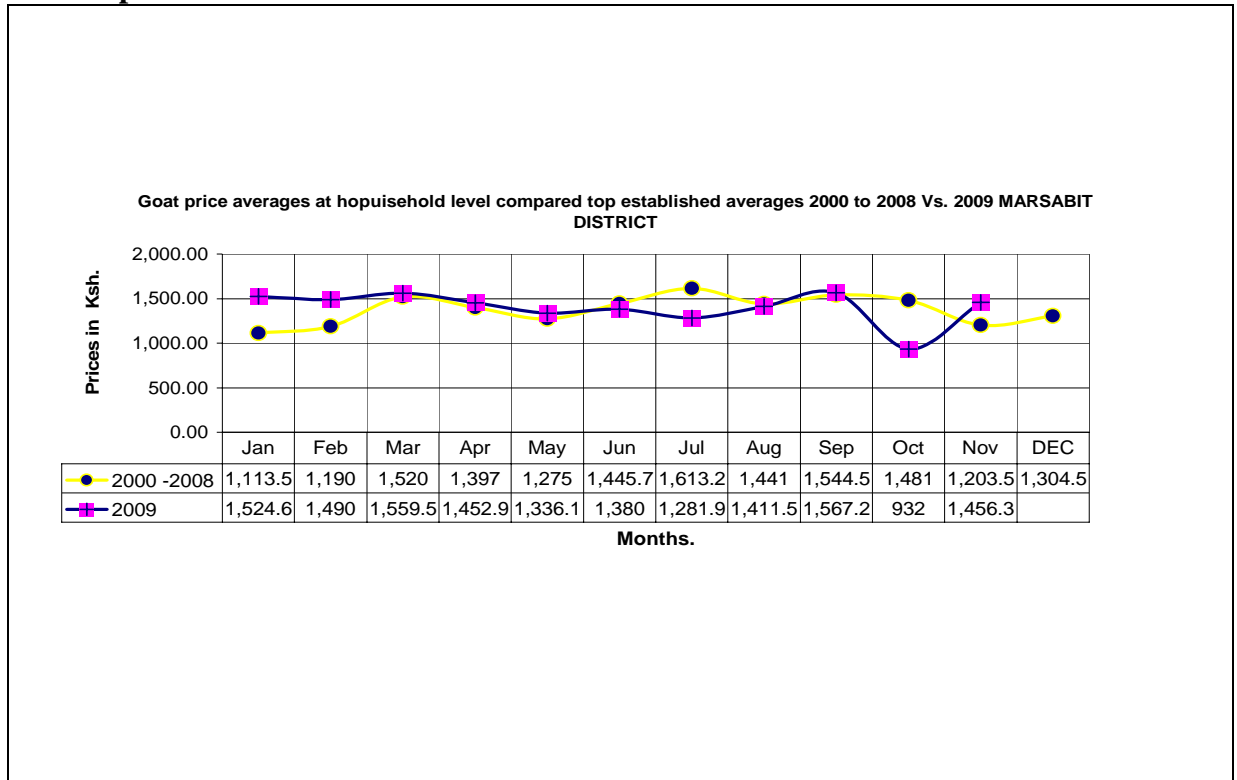
3.1.1 Cattle prices



Ref: N =6 (No. of the sold cattle) by 12 Sentinels x 30 Households

- Average cattle prices rose to ksh 7,167 from ksh5,580 in October due to recovering body condition after the onset of the short rains season.
- Highest price was recorded in Laisamis division (pastoral livelihood) of Marsabit south district, where sold three out of the six heads sold in the entire district at Ksh8,000, Central and Gadhamoji divisions (Agro/pastoral livelihood) being the second and least registering Ksh6,333.30.
- Comparatively, cattle prices are expected to be on increasing trend due to low sales rates. The low sale rate was attributed to abnormal far flung livestock concentrations from their homesteads.

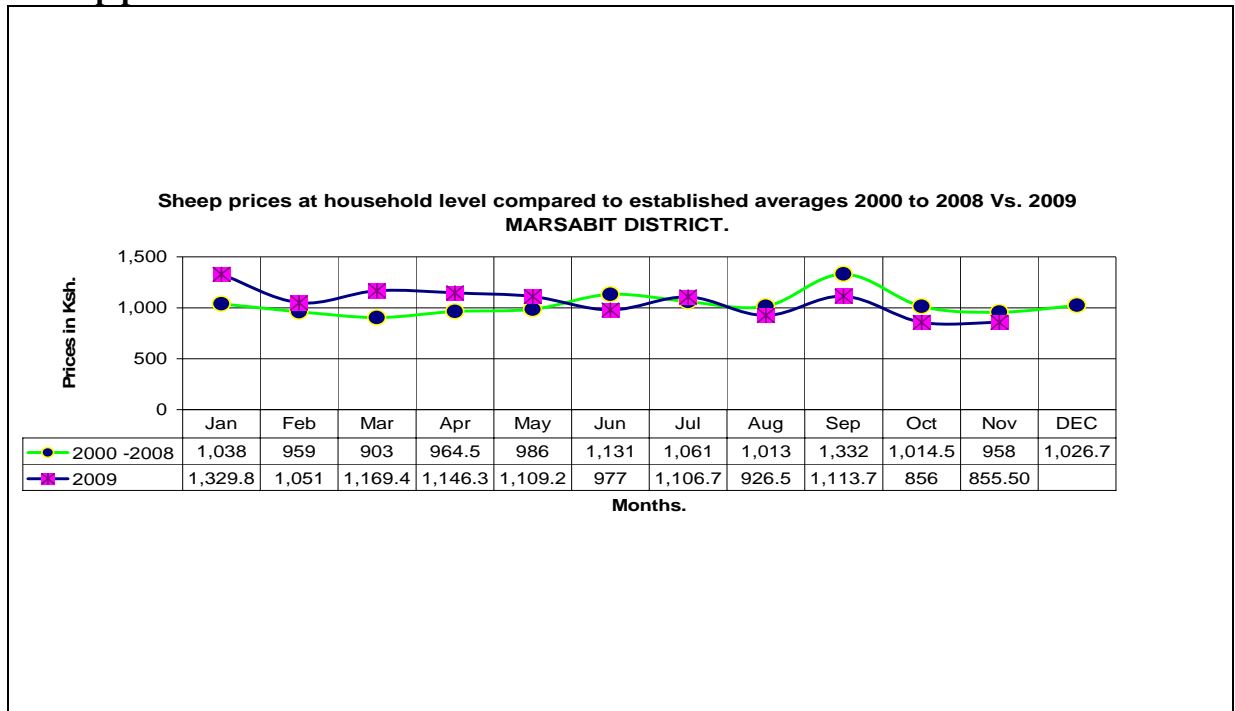
3.1.2 Goats prices



Ref: N =75 (No. of sold goats') by 12 Sentinels x 30 Households

- Goat prices showed a slight increase to ksh1,456 from ksh 932 in October.
- Prices are expected to increase further due to recovering body conditions beside the minimal sale numbers. Prices were higher in central and Gadhamoji divisions (Agro pastoralist Lv.) of Marsabit central district at Ksh2,145, followed by Laisamis division of Marsabit south district at Ksh1,731 and Loiyangalani of Marsabit south district had the least at Ksh600. These differences can be linked to limited access to markets in many lowland areas and variation in body condition.

3.1.3 Sheep prices



Ref: N =95 (No. of Sheep sold) x 12 Sentinels each by 30 Households

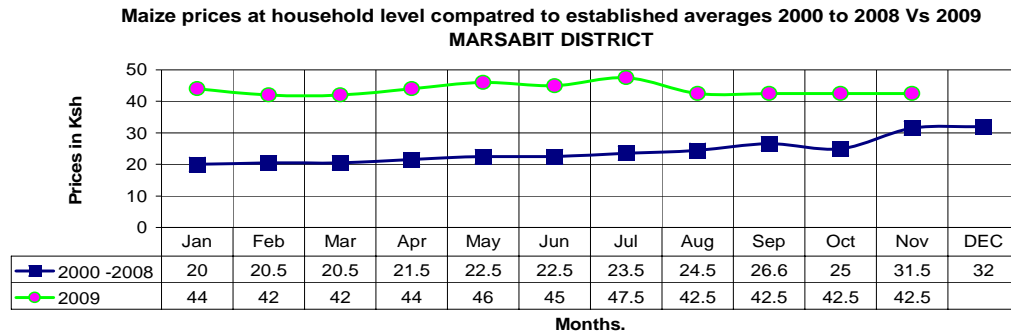
- Sheep prices dropped by Ksh1.50 from ksh 856 in October to ksh855.50. Sheep body condition showed that it is the second most vulnerable among other livestock species hence low on recovering stage. This was due to minimal pasture growth rates and availability.
- Higher sheep prices were registered in Laisamis division (pastoral livelihood) in Marsabit south district at Ksh1,200, followed by North Horr division in (pastoral livelihood) in Marsabit north district and Loyangalani division (fisher-folk) in Marsabit south district at Ksh600.

3.2 Milk consumption

- There was no milk availability reported in any part of greater Marsabit district. This abnormality was attributed to prolonged drought situation which resulted to emaciated livestock body conditions besides distant livestock concentration.
- Depleted milk availability, especially among pastoralist households in the greater Marsabit district, aggravated food shortages at household level.

3.3 Food prices

3.3.1 Maize prices



Ref: N =346 Households purchasing out of 12 sentinels each by 30 households.

- Maize prices at household level stabilized at ksh42.5 per kilo. Highest prices at household level were recorded in Loiyangalani division of fisher folk livelihood reporting at Ksh50, while the agro/pastoral livelihood of Mt. Marsabit in Central and Gadhamoji divisions of Marsabit central district reported the least at Ksh32.50 per kg. Maize prices are expected to remain high in the next two months.

3.4 Income

3.4.1 Livestock income

Livestock sales remained the leading source of income though in declining trend. The sales reduced by 64% compared to this time of the year. Low sales were attributed to poor body condition of livestock and collapsed market.

3.4.2 Other income

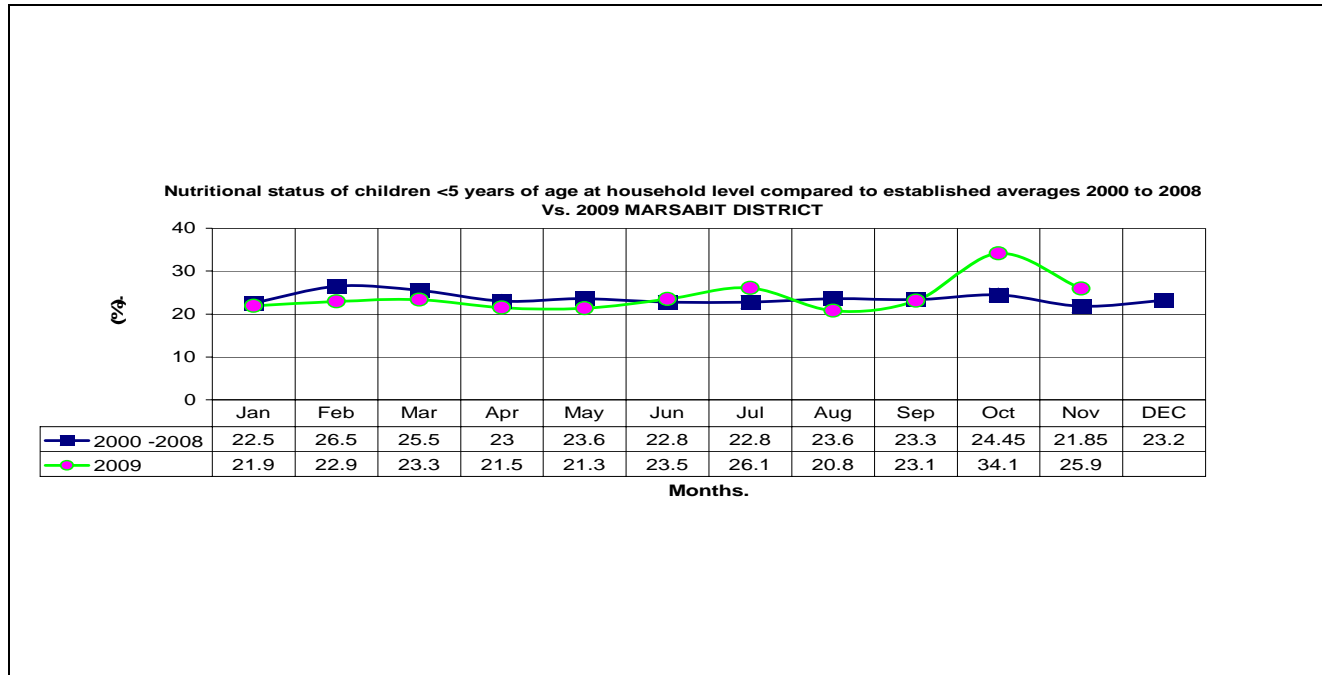
Other sources of income include casual labor where 7% of sampled households stating so, few others reporting sale of charcoal, sales of Khat (Miraa), formal employment between Ksh 200 to 700 per day and engaging in degrading jobs that fetches between Ksh40 to 150 per day.

3.5 Implications on food security

- The substantial decrease in independent livestock sales as a result of poor body condition, collapsing of terminal market and inflated cereal meat ratio indicates poor household food security situation, especially among pastoral livelihoods and Agro pastoralist at household level.
- Increasing livestock movement (68%) to far flung wet areas outside their normal seasonal concentrations affected food security at household level, especially among pastoralist livelihood.

4.0 Human welfare indicators (Utilisation of food)

4.1 Nutrition status



Ref: N=3.4 (Avg. No. of children) x 12 Sample sites x 30 Households

- The nutrition status of children below five years improved during the month, with the percentage of those rated at risk of malnutrition dropping to 25.9 from 34.1 in October. The number of sampled children was 1,192 which includes 594 girls and 598 boys. However, the rate was 4.05% higher compared to the established long term averages. The nutrition status was compounded by lack of food that is result of disastrous drought situation in the larger district.
- Rates remained high in Loiyangalani division of Marsabit south district at 45.2% followed by North Horr division with 36.7% and central and Gadhamoji divisions has the least at 12.1%. The rates are expected to increase due to persistent drought (especially in the lowland areas of larger of Marsabit district).

4.2 Human health

- Cholera outbreak was reported in Illeret location (Fishermen/pastoral livelihood) in North Horr division of Marsabit north district during the month under review, which resulted in thirteen deaths. The disease outbreak was believed to be

transmitted by fishermen from Turkana district. The cholera is becoming endemic in the district as it remained the killer disease and with over 300 patients hospitalized both in Loiyangalani and in Illeret outbreaks.

- The normal causes of morbidity for the general population in the greater Marsabit district were malaria, respiratory infections, diarrhea/dysentery among children below five years and few adults. Human health condition has been aggravated by lack of food, conditions that make people susceptible to diseases.
- Cold weather related infections are expected to increase with prevailing wet season.

5.0 Current interventions

5.1 Non-food interventions

- Districtwide EMOP general food allocations.
- Repair works on community boreholes in Burgabo, Kubi Qalo, Namarei, Gobbore, and Dirib Gombo – ALRMPII.
- Provision of fuel to all community boreholes and other community water schemes –ALRMP, the NGO PISP, CIFA and M.o.Water and Irrigation.
- Provision of planting seeds for Agriculturalist communities in larger Marsabit district for materializing short rain season for the anticipated short rains season-ALRMPII/ MOA
- Provision of seedlings for afforestation in prevailing short rains season.- Forest dept/ALRMPII.
- Ten-day training workshop on intermarrying GoK and community Early Warning Systems for Kenya Red Cross regional staff and two facilitators from Ari Lands Resource Management Project- KRCS/ ICRC
- Six-day peace initiative meetings in Dukana, Torbi in Marsabit North district and Obok in southern Ethiopia between communities, women peace forum and District Peace committees- UNDP/ALRMPII.
- Intervention in cholera outbreak in Illeret location – MSF/KRCS/MOH.

5.2 Food aid

- District-wide EMOP general food allocations for the month of October without Con Soy Blend - KRCS
- Fifty two percent of the direct neediest beneficiaries (101,000) of the total population are under emergency relief operation program. Kenya Red Cross Society (KRCS).
- Minimal GoK relief allocation was reported in some parts in greater Marsabit district targeting only between four to five percent of the population thus being uneven – GoK.

5.3 Other coping strategies

The applied coping strategies among households include;

- Increased number of households skipping meals, sharing of relief food, and purchasing of food on credit across all the three main livelihoods, which is an indication of a serious inadequacy of food compared to similar period of the previous years.

- Agro /pastoral livelihood zone reported increasing sales of firewood/charcoal to urban dwellers.

6.0 Recommendations to KFSM and DSG

- Close monitoring of household food security situation in the coming month with a view of mitigating adverse effects caused by the prevailing drought especially in lowland areas.
- Conduct a Rapid Assessment and short rains assessment to pave way forward for the appropriate intervention.
- Scale up Supplementary and therapeutic relief assistance in all affected areas especially to North Horr and Loiyangalani divisions which are in emergency stage.
- Continue support for water trucking to water stressed areas in Maikona, North Horr and Dukana divisions of Marsabit north district where includes Hurri Hills, Balesa, and Turbi and El Beso areas.
- Repairs and maintenance for community boreholes should be given a first priority in areas which never received rains.
- GoK relief food should be consistent and increase the targeting to support needy households who are not targeted under EMOP.
- Provision of veterinary medics and services especially on wet season infections
- Provision and services of Army worms, locust, quillea surveillance and selective herbicides for weeds.
- Continuous disease surveillance should be emphasized in order to contain disease outbreaks especially PPR, CCBP, CCPP and other wet season infections to areas where livestock are currently affected or concentrated.
- Support the Loiyangalani, El-Molo and Illeret communities with fishing gears through credit provision and promote marketing of the fish.
- Scale up supplementary and therapeutic wet and dry feeding program to intervene the currently increasing malnutrition rates.
- Intensify disease surveillance, construction and equipping of health facilities and recruitment of personnel.
- Ministry of Health should rapidly respond to outbreaks such as cholera wherever it is reported.
- Fostering of peace should be encouraged within and without district boundary.
- Cross border peace meetings should be emphasised by all stakeholders to enable free movements of livestock.
- Swift reaction should be taken to livestock raids whenever and wherever they are being reported.