

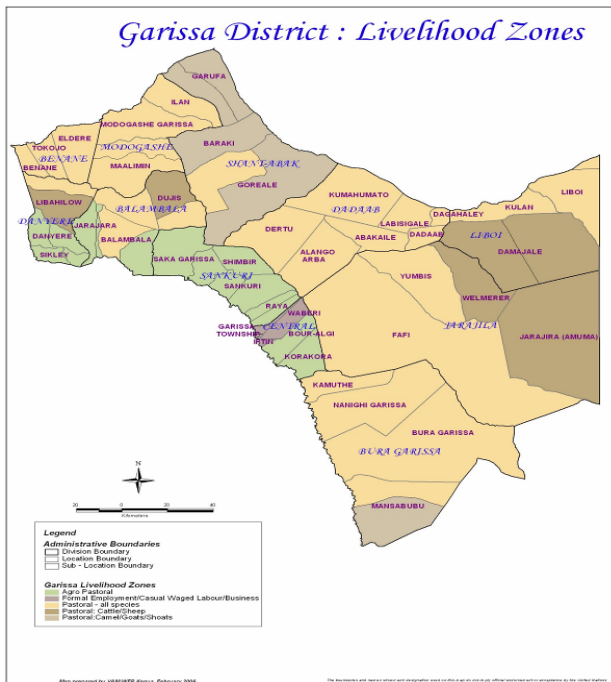


**OFFICE OF THE PRIME MINISTER
MINISTRY OF STATE FOR THE DEVELOPMENT OF NORTHERN KENYA AND OTHER ARID LANDS
ARID LANDS RESOURCE MANAGEMENT PROJECT II**

DROUGHT MONITORING BULLETIN, OCTOBER 2009

Garissa District

Warning Stages



Livelihood Zone	Warning stage	Trend
Agro-pastoral	Alarm	Improving
Pastoral-Cattle/Sheep.	Alarm	Improving
Pastoral- all species	Alarm	Improving
Pastoral: Camels and Goats	Alarm	Improving
District	Alarm	Improving

Seasonal Calendar



<p>Dry period (Jilal) consisting of January, February, & March. Temperatures are high; activities carried out include,</p> <ul style="list-style-type: none"> • migration of livestock for pasture & water search, • Herd separation • Livestock marketing • Pressure on boreholes • Conflicts 	<p>Long rainy season (Guu), starts late March and continues in, April and May. Activities carried are-</p> <ul style="list-style-type: none"> • Selection & breeding of livestock • weeding ceremonies • weaving • male circumcision • restocking of livestock • planting for rain fed crops • deworming of livestock 	<p>Dry and cold period (Hagaa) in the months of June, July, August, Sept. and mid October. The activities performed are:</p> <ul style="list-style-type: none"> • High rate of livestock and household migration • High labour demand • Destocking /culling • Surveillance for pasture /browse • Caravan water trekking 	<p>Short rainy season (deer) of Oct, Nov and December. Activities for this period are:</p> <ul style="list-style-type: none"> • Restocking of livestock. • Breed improvement • Planting for rain fed crops • Crafts and weaving • Calving and kidding period
--	---	---	--

Situation overview

- The district recorded some rainfall during the month. The distribution of the rains was fair across the district, with the northern (Modogashe, Shantabak) and southern (Bura and Galmagalla) parts receiving good amounts while the rest got fair to poor amounts.
- The quality and quantity of pasture and browse relatively improved with most of the vegetation cover improving considerably, decreasing the trekking distances for forage. This was noted towards the end of the month when the rains started.
- The main water sources available to the pastoralists in the district were boreholes, River Tana, Benane springs and water pans. Water was available for livestock, with most water pans collecting substantial amounts, thus reducing congestion at water points .
- Water accessibility for households improved tremendously compared to the preceding month. The distances covered by pastoralists reduced, with an estimated average distances of 10 km covered. Livestock access to water on the other hand increased compared with the preceding month. The distance covered was less than 2km as livestock got water in grazing areas.
- The body condition of livestock is expected to improve as the availability of pasture/browse improves and also with the availability of water at zero distances. Cases of multiple infections in the small stocks (sheep and goats) were reported and these are suspected to be contagious caprine pleuropneumonia (CCPP), *Peste des petits ruminants* (PPR) and helminthiasis plus deficiencies of minerals and vitamins. There was no livestock migration reported during the month.
- Cattle prices showed a declining trend compared with preceding month selling at Ksh6, 400 compared to Ksh6,500 in September. The prices of goats showed a stable trend when compared with the preceding month at Ksh1200, while sheep prices continued to decline compared with the preceding month, trading at Ksh767 compared to Ksh835 in September. This was due to their susceptible nature to depleted pasture and disease incidence.
- Milk production in the district was very low but is expected to increase in the short run possibly at a faster rate as the rainy season is on course.
- No cases of conflict/human displacement / insecurity were reported in the course of the month .
- The nutrition status of children below five years declined slightly , with the percentage of those rated at risk of malnutrition rising to 13.6% from 13.4% in September. This was attributed to the long dry spell which led to the depletion of livestock products (milk) which is the basis of nutrition for pastoralist children, coupled with low availability and accessibility of essential food commodities.

Current interventions

Non-food interventions

- Destocking programme for small stock carried out by VSF Belgium.
- Provision of fuel subsidy to boreholes continued during the month.
- Repair, servicing and procurement of livestock boreholes equipment continued throughout the month.

- Provision of seeds for planting to communities under hot community project.
- Disease surveillance, vaccination and livestock treatment continued throughout the month supported by ALRMP.
- Community capacity building was carried out by Arid Lands Resource Management Project.
- Njaa Marufuku Kenya project and national agriculture and livestock extension programme by Ministry of Agriculture continued to be implemented in the district.
- Mobile outreach services were carried out by the Ministry of Health.

Food aid

- EMOP relief food distribution covering a population of 106,104 beneficiaries.
- School feeding programme provided by WFP targeting 42,069 children continued during the month.
- Supplementary feeding targeting 10,200 children under five, pregnant and lactating mother continued.
- GOK relief food was distributed throughout the district(Greater Garissa).

Recommendations to District Steering Group and Kenya Food Security Meeting

- Increase food aid as more pastoralists are dropping out of the system.
- Provide and support boreholes repair, servicing and maintenance to enhance water supply.
- Support the rapid response teams to attend to any emergencies like the anticipated El nino.
- Provide standby generating sets and repair old sets.
- Provide breeding stocks to livestock keepers to improve quality.
- Train communities on crop husbandry and livestock husbandry practices.
- Support communities by financing micro-enterprise development to enhance their livelihoods.
- Initiate restocking programme for those who lost their livestock.
- Continue to capacity build pastoral communities on peace building and conflict resolution.
- Support small-scale farms along River Tana in terms of farm inputs and value addition activities.
- Support the veterinary investigation laboratories on disease surveillance before any outbreaks are reported.
- Mobilise and sensitise communities on diversification of livelihoods.
- Continue to provide mobile outreach services for centre with no health facilities.
- Initiate afforestation programme to improve the denuded land.

1.0 Environmental indicators (Stability)

1.1 Rainfall

- There was rainfall realized during the month. The distribution of the rains was fair across the district. The northern (Modogashe, Shantabak) and southern (Bura and Galmagalla) parts of the district received good amount of rainfall while the rest was covered but fair to poor. However this is the beginning of the rainy season and more is expected in the coming month.
- Temperatures have relatively increased when compared to the previous month but lies within the normal range.

1.2 Condition of natural vegetation and pasture

- The quality and quantity of pasture and browse have relatively improved with most of the vegetation cover improving considerably thereby decreasing the trekking distances for forage. Livestock have fresh browse and pasture consequently enabling the weak and emaciated livestock to recover from the drought stress.

1.3 Water sources and availability

1.3.1 Use of water sources

- The main water sources available to the pastoralists in the district are Boreholes, river Tana, Benane springs and earth pans and water pans. Water is available to livestock with most of the water pans collecting substantial amount of water thus reducing congestions at water points.

1.3.2 Household access to water

- Water accessibility for households improved tremendously compared to the preceding month. The distances covered by pastoralists reduced with an estimated average distances of 10 km covered. This will give them more time to engage in other productive activities.

1.3.3 Livestock access to water

- Livestock access to water increased remarkably when compared with the preceding month. The distance covered was less 2km as livestock got water in grazing areas. The rains reduced water and forage shortages, thus livestock got water all over the natural water holes and water pans. Most of the boreholes were closed.

1.4 Emerging issues

1.4.1 Insecurity/Conflict/ Human displacement

- No conflict over natural resource use and human displacement was reported in the course of the month under review. However, the security situation remained tense along the Kenya/Somalia border.

1.4.2 Migration

- There was no livestock migration reported during the month as owners feared that their herds would get stuck in muddy areas.

1.4.3 Implications on food security

- Increased water availability and accessibility, improving forage cover, reduced cost of watering livestock, will have positive implication on food security in the district.

2.0 Rural economy indicators (Food availability)

2.1 Livestock production

2.1.1 Livestock body condition

- The body condition of livestock is anticipated to improve as the availability of pasture/browse improves and also with the availability of water at zero distances.

2.1.2 Livestock health and diseases

- There were reported cases of multiple infections in the small stocks (sheep and goats) and these were suspected to be contagious caprine pleuropneumonia (CCPP), PPR and helminthiasis plus deficiencies of minerals and vitamins. The cases are yet to be confirmed by the department of veterinary services. The most affected areas were Modogashe and Shanta abak divisions and now spreading to Danyere.

2.1.3 Milk production

- Milk production in the district was very low but is expected to increase in the short run possibly at a faster rate as the rainy season is on course.

2.2 Crop production

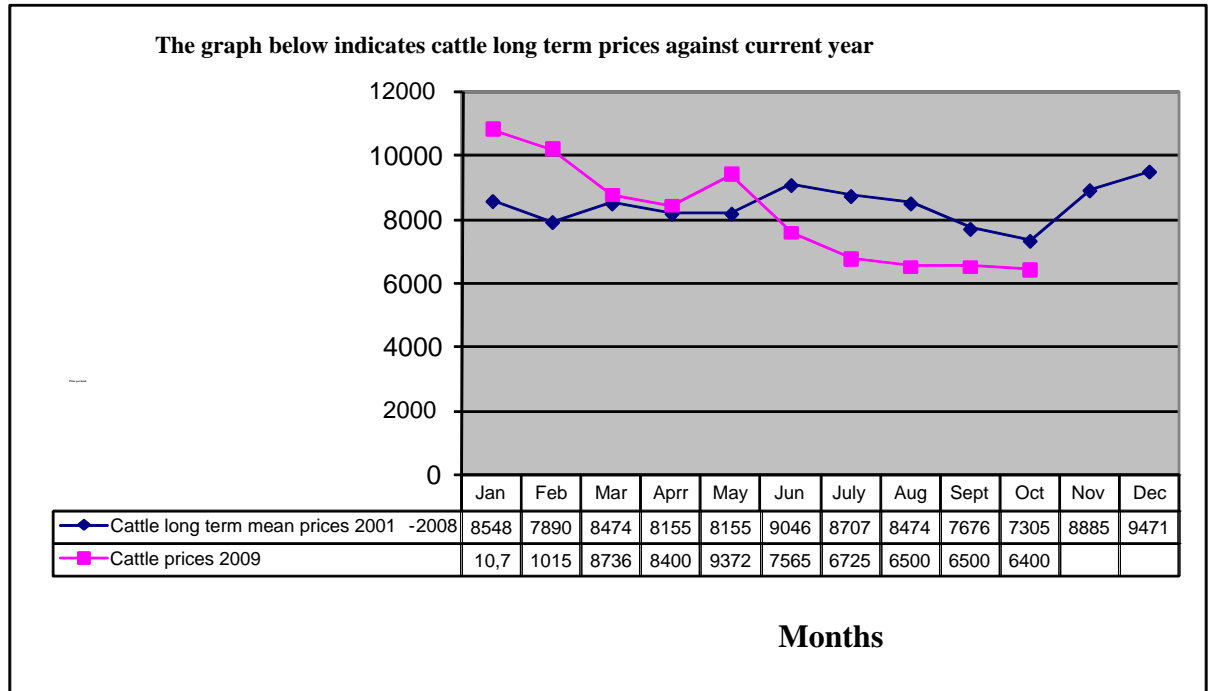
2.2.1 Timeliness and status of various crop production activities

- Irrigation farming was practiced along River Tana and the main crops grown under this system of production were bananas, pawpaw, melon, lemon, onions and tomatoes.
- Irrigation farming was constrained by lack of good market prices, high fuel costs and high cost of farm inputs.
- Preparation for rain-fed farming was done in areas with potential.

2.2.2 Pests and diseases

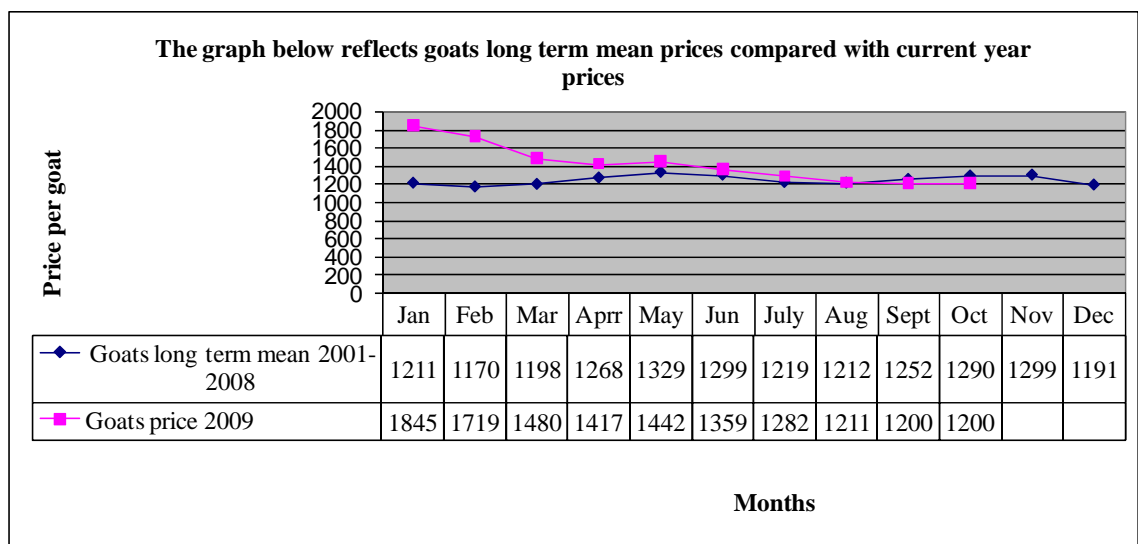
- No crop pests or diseases were reported in the course of the month under review.

3.0 Access to food
3.1 Livestock marketing
3.1.1 Cattle prices



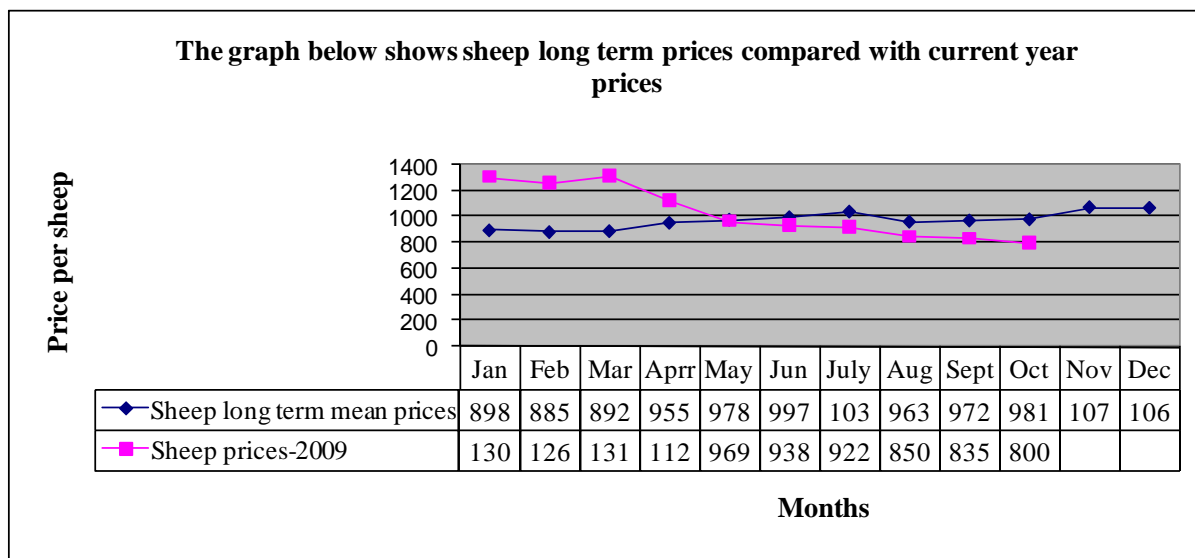
- Cattle prices showed a declining trend when compared with preceding month. The average price was Ksh 6400 compared to Ksh6,500 in September.
- The prices were below the long term average and were attributed to the effects of drought, leading to poor cattle body condition.
- However, the prices are expected to improve within a short duration.

3.1.2 Goats prices



- The prices of goats showed a stable trend when compared with the preceding month at Ksh 1,200. This was mainly attributed to the poor body condition, withholding by owners, and destocking programme initiated by VSF-BELGIUM.

3.1.3 Sheep prices



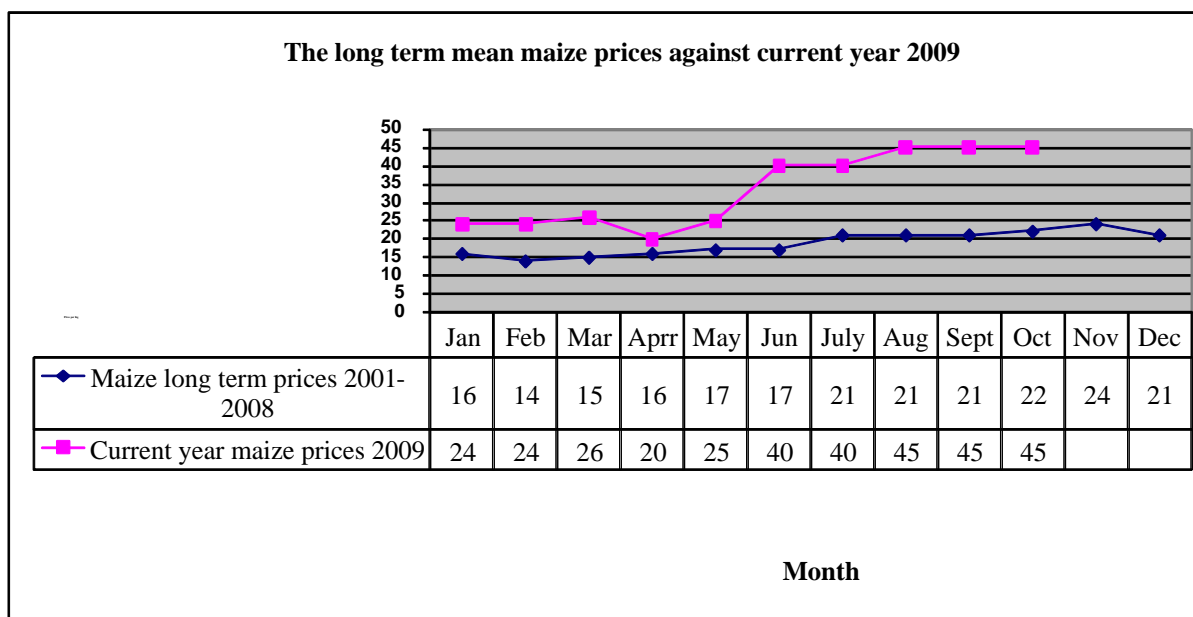
- Sheep prices continue to show a declining trend when compared with the preceding month. This was due to their susceptible nature to depleted pasture and disease incidence. They are also not preferred by most people.
- Sheep traded at Ksh767 compared to Ksh835 in September.

3.2 Livestock sales

- The livestock sales rate decreased when compared with the preceding month. This is due to reducing livestock prices, high disease incidence and lack of ready market for livestock. Families rely heavily on credits and borrowing and others turning to alternative source of livelihood.

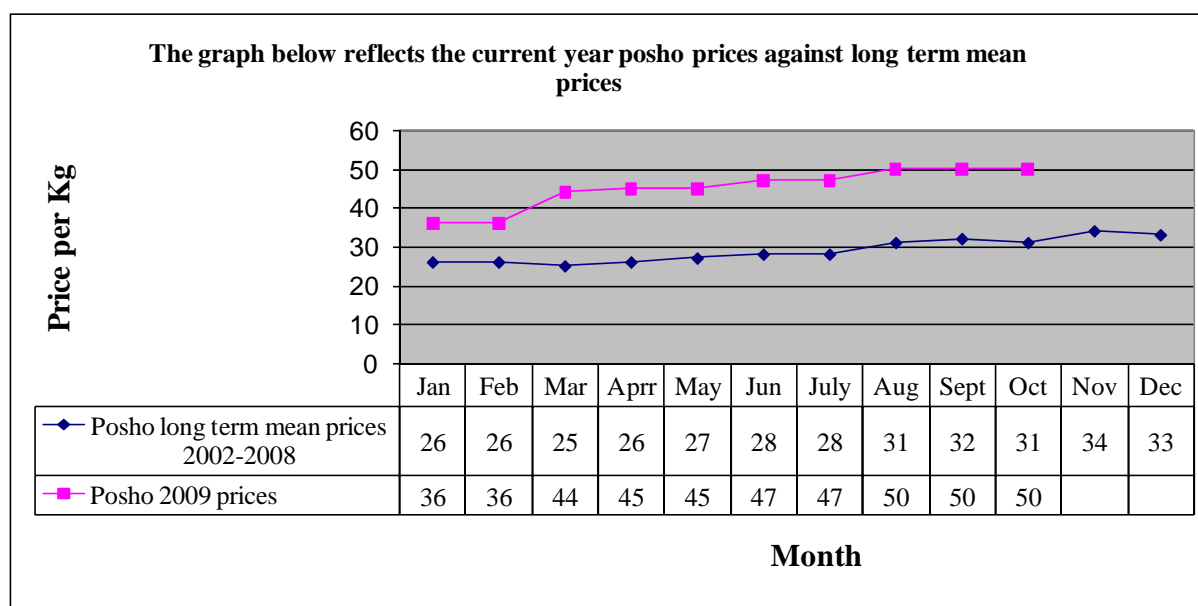
3.3 Food prices

3.3.1 Maize price



- Maize prices remained stable when compared with the preceding month. However, they were above the long term mean due to acute shortages at household level.
- The average price was Ksh45 per kilo, same as in September.

3.3.2 Posho (locally milled maize meal) prices



- The prices of posho and sifted maize meal, which are both end products of maize, remained stable when compared with the previous month but were above the long term mean.
- This was attributed to the price of parent product (maize). The price was Ksh50, same as September. The increase in price of essential food commodities and decrease in livestock prices had an impact on the purchasing powers of households.

3.3.3 Purchase price of other food commodities

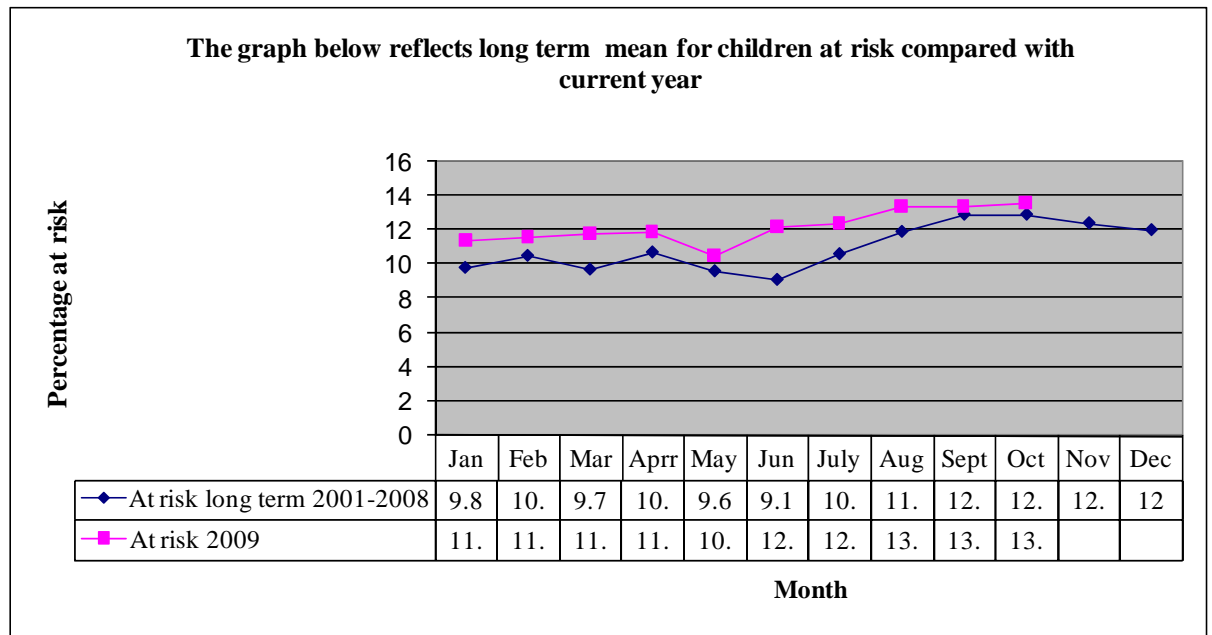
- The prices of other essential food products showed an increase in trend when compared to the preceding month and it was above normal.

3.4 Implications on food security

- High food prices (cereal and other food items), declining livestock prices, lack of ready markets for farm produce and high cost of production, livestock disease incidences and reduced livestock products in the district reflects a negative food security implications.

4.0 Human welfare indicators (Utilisation of food)

4.1 Nutrition status



Number of children=1404

- The nutrition status of children below five years declined slightly , with the percentage of those rated at risk of malnutrition rising to 13.6% from 13.4% in September.
- This was attributed to the long dry spell which led to the depletion of livestock products (milk) which is the basis of nutrition for pastoralist children, coupled with low availability and accessibility of essential food commodities.

4.2 Human health

- There were suspected and reported cases of malaria and respiratory tract infections. Cases of malaria are expected to rise due to the rains, which create favourable breeding environment for mosquitoes.

4.3 Flagged areas (affected areas)

- There were no flagged areas but due to the current rains and consequent flooding, water-borne diseases may break out and cause damage to the population.

5.0 Current interventions

5.1 Non-food interventions

- Destocking programme for small stock carried out by VSF Belgium.
- Provision of fuel subsidy to boreholes continued during the month.
- Repair, servicing and procurement of livestock boreholes equipment continued throughout the month.
- Provision of seeds for planting to communities under hot community project.
- Disease surveillance, vaccination and livestock treatment continued throughout the month supported by ALRMP.
- Community capacity building was carried out by Arid Lands Resource Management Project.
- Njaa Marufuku Kenya project and national agriculture and livestock extension programme by Ministry of Agriculture continued to be implemented in the district.
- Mobile outreach services were carried out by the Ministry of Health.

5.2 Food aid

- EMOP relief food distribution covering a population of 106,104 beneficiaries.
- School feeding programme provided by WFP targeting 42,069 children continued during the month.
- Supplementary feeding targeting 10,200 children under five, pregnant and lactating mother continued.
- GOK relief food was distributed throughout the district(Greater Garissa).

5.3 Coping strategies

- Petty trade.
- Reliance on remittances.
- Herd separation.
- Credit and borrowing.
- Change of lifestyle from pastoralism to sedentary settlement.

6.0 Recommendations to District Steering Group and Kenya Food Security Meeting

- Increase food aid as more pastoralists are dropping out of the system.
- Provide and support boreholes repair, servicing and maintenance to enhance water supply.

- Support the rapid response teams to attend to any emergencies like the anticipated El nino.
- Provide standby generating sets and repair old sets.
- Provide breeding stocks to livestock keepers to improve quality.
- Train communities on crop husbandry and livestock husbandry practices.
- Support communities by financing micro-enterprise development to enhance their livelihoods.
- Initiate restocking programme for those who lost their livestock.
- Continue to capacity build pastoral communities on peace building and conflict resolution.
- Support small-scale farms along River Tana in terms of farm inputs and value addition activities.
- Support the veterinary investigation laboratories on disease surveillance before any outbreaks are reported.
- Mobilise and sensitise communities on diversification of livelihoods.
- Continue to provide mobile outreach services for centre with no health facilities.
- Initiate afforestation programme to improve the denuded land.