

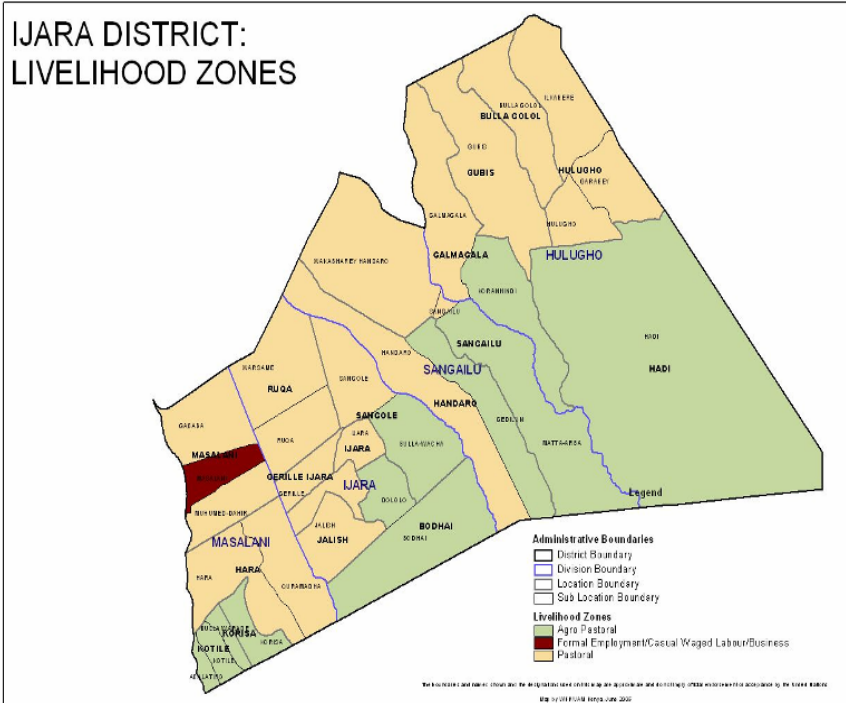


OFFICE OF THE PRIME MINISTER
MINISTRY OF STATE FOR THE DEVELOPMENT OF NORTHERN KENYA AND OTHER ARID LANDS
ARID LANDS RESOURCE MANAGEMENT PROJECT II

DROUGHT MONITORING BULLETIN, OCTOBER 2009

Ijara District

Warning Stages



Livelihood Zone	Stage	Trend
Pastoral	Alert	Improving
Agro pastoral	Normal	No change
Formal employment/ Casual labor	Alert	Improving
District	Alert	Improving

Seasonal Calendar

<ul style="list-style-type: none"> Milk yield drops Livestock moves towards dry season grazing zones <p><u>Lean period for the pastoralists</u></p>	<ul style="list-style-type: none"> High milk yield Livestock moves towards the traditional wet grazing areas High calving, kidding and lambing rates 	<ul style="list-style-type: none"> Low milk availability Livestock moves towards the fall back dry seasons grazing areas(Boni forest) Increased human-wildlife conflicts <p><u>Lean period for the pastoralists</u></p>	<ul style="list-style-type: none"> High milk yield Livestock moves towards traditional wet seasons grazing areas High mating rates 								
Short Dry Spell			Long rains			Long dry spell				Short rains	
Jan	Feb	Mar	Apr	May	Jun	Jul	Aug	Sept	Oct	Nov	Dec

Situation overview

- Rainfall was received in all the sentinel sites during the period under review and cool and wet weather conditions prevailed in the entire district throughout the month.
- The condition of browse and pasture both in quality and quantity improved due to prevailing rains. Movement of satellite herds northwards was noted.
- Medium and large water pans in all of the livelihood zones contained adequate quantities of water and are expected to serve consumers for the coming couple of months.
- The livestock body condition and health was rated fair to poor for all categories in all the livelihood zones.
- Insignificant decrease in average prices of all categories of livestock was noted in all the livelihood zones except sheep, which recorded Ksh1164.9 compared to Ksh938 in September 09. Cattle price reduced to Ksh 8,792 in October against Ksh9,714 in September.
- Compared to last reporting period, the nutrition status of children under five (based on MUAC<135mm measurement) deteriorated, with the percentage of those rated at risk being recorded up from 26.6% to 26.7. This was attributed to EMOP relief distribution i.e. Unimix in all the livelihood zones the most affected sentinel sites being Aballatiro, Koranhindi and Sangailu.
- There was inward migration of livestock from Fafi and Garissa districts during the month. Nevertheless there was sustained outward migration to Lamu district.
- The water situation improved, resulting in decrease in distance of households to water sources when compared with preceding month. Average trekking distance for households to water sources was recorded at 4.1km while average distance between grazing areas and water sources was recorded at 11.6Kms for October as compared with 25.1km for September .
- Cases of CCPP in goats were reported while there were reported cases of CBPP and Blank quarter anthrax in cattle in agro-pastoralist zones, especially in Hulugho, Sangailu, Kotile, Dololo, Sangole and Bulto Hama. Trypanosomiasis remained a common problem in all livelihood zones and affected all categories of livestock.
- The mortality rate of cattle decreased, recording at 3.7% compared with 4.5% in September while that of sheep and goats was 2.5 and 2.6% for October as opposed to 3.5 and 2.9% for September.
- The average birth rate for cattle during the reporting period was recorded at 4.7% while that of sheep and goats recorded 8.5% and 6.3% respectively. The availability of milk for consumption in all the livelihood zones remained low.
- Generally, the drought situation in the entire district was at alarm stage and worsening.

Recommendations to DSG and KFSM

- Strengthen outreach clinics and organise medical camps with other actors.
- Measures to curb wildlife should be strengthened by KWS.
- CCBP vaccination campaigns to continue across the district. Treatment of other diseases should accompany the exercise.
- Provision of safe drinking water to prevent outbreaks of diarrhea and other communicable diseases.

- Continue to encourage and support crop farming in the agro-pastoralist zones in order to enhance food security in the district through programmes such as Njaa Marafuku, provision of seeds and other inputs.
- Increase EMOP beneficiaries from the current 26,000 people to 60,000 in view of worsening household food security.
- Reducing levels of malnutrition in pregnant and lactating women and children under five years through provision of supplementary food and medical awareness programmes
- Continue to encourage implementing activities aimed at safe disposal of waste including human faecal matter across the entire district.
- Measures to combat malaria and implement good governance of water.
- Water trucking to institutions such schools, dispensaries, security posts that lie in areas hit hard by water scarcity should continue.
- Continuing vaccination/treatment efforts should be coupled with effective disease surveillance system by the veterinary department.
- Mainstream general natural resource management issues into the district development plans in order to cushion residents against drought and other forms of adversities accompanying climate change.
- Promote community conservancies.
- Conduct nutritional survey and house hold food security assessment.
- Introduce Food For Asset(FFA) programme.
- Provide livestock drugs subsidy for farmers.
- The borehole in Kotile should be urgently repaired for domestic water supply services resumption to those communities while the shallow wells at Abalatiro to be cleaned to boost production of clean water to residents. Similarly, the current up-grading of the urban water supply in Masalani should be speeded up to alleviate the unprecedented water shortage within the district headquarters while the completion of the water project at Hara should be speeded up.

1.0 Environmental indicators (stability)

1.1 Rainfall

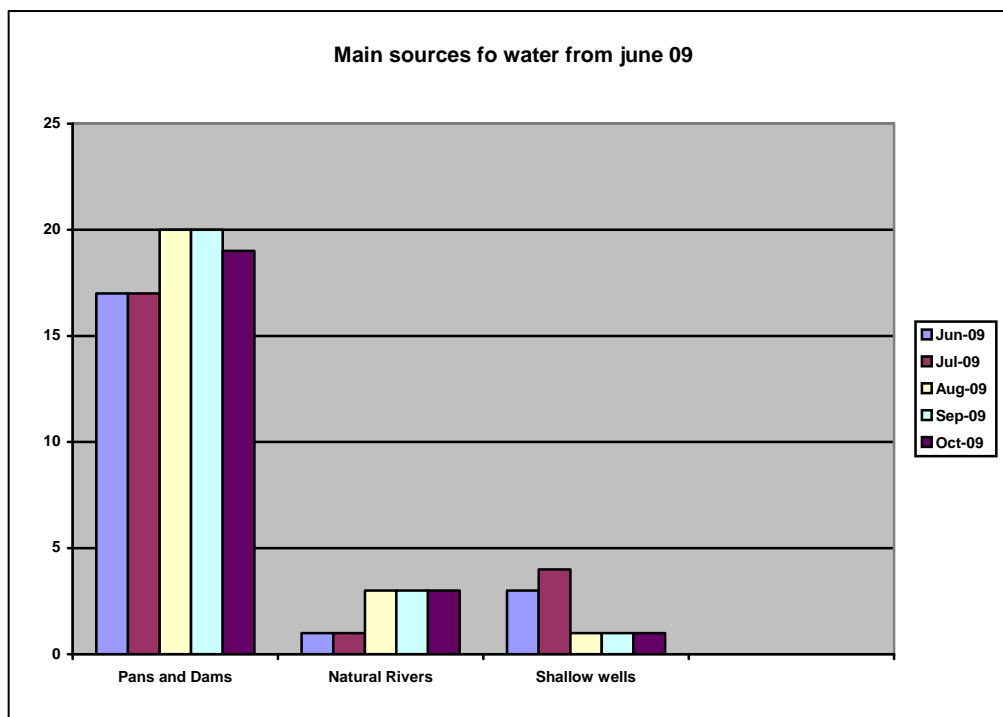
- There was no rainfall recorded in all the sentinels during the period under review. The trend was normal at such time of the year as it the usual long dry spell that covers all parts of the district.

1.2 Condition of natural vegetation and pasture

- Browse conditions diminished further both in quality and quantity in all the livelihood zones while pasture availability was scarce and poor in quality across the entire livelihood zones save for some grass found in the narrow strip of land lying within the Boni forest of the district.
- Body condition of goats in the district was fair while the body condition of cattle in pastoral livelihood zones was extremely poor as opposed to the body condition of those found in the agro-pastoral zone that was rated as fair. Of all livestock categories in the district, sheep exhibited the poorest body condition and this is attributed to water stress, diseases, fatigue from trekking and heat as well as inadequate pasture
- The observed trend was not normal at the time of year as pasture, browse and water were supposed to be available in fair quantities while livestock body condition was supposed to be ranging from good to fair. The current trend had negative impact on household food security since the poor body condition of livestock, especially cattle, had resulted in poor production of milk and meat as well as leading to poor prices.

1.3 Water sources and availability

1.3.1 Use of water sources



- Pans and River Tana were the major water sources in the district for both domestic and livestock use.

- Most of the medium and large water pans dried up, forcing the pastoralists to migrate to areas where water trucking was going on.
- The observed trend was not normal when compared with the same period in previous years as the Coastal conventional showers failed to occur in the district this year. The extremely poor quality of the little water available in the district remained a major source of concern to all.

1.3.2 Distance to water sources

- The major water pans in Sangailu Handaro and Ijara dried up due to the prolonged drought.
- The average distance to water sources from grazing areas was recorded at 25.1 km for August'09 and 25 km for July'09 while that of domestic households was 5.3 for August'09 as compared with 6km for July'09.
- Generally, the observed situation was beyond normal as the distance between water sources and households was supposed to be 3km in such period of the year. Similarly, the distance between pasture and water was far apart and has negatively impacted on food security as too much time was spent on collection of water at the expense of other socio-economic engagements while livestock was weakened by fatigue and heat.
- During the month the main water sources being accessed included pans and dams while Tana River remained the undisputed major source for all the consumers in the district.

1.4 Emerging issues

1.4.1 Conflicts/ insecurity/human displacement

- Increased human/wildlife conflicts continued to be observed with communities and authorities suspecting that swelling numbers of animals and accompanying problems is , perhaps, attributed to encroachment on wildlife habitats and migration routes by increasing human activities in the area coupled with current change in climatic conditions.
- High encroachment rates of undesirable bushes on rangelands.
- Increased tsetse fly infestation.
- Increased illegal logging activities in the Boni forest.
- Displacement of pastoralist households and pressure created on the pasture and water resources by huge influxes of livestock from Ijara into Lamu and Tana Delta Districts are already causing disputes and raising suspicion hence conflicts are looming over natural resource use in that Biodiversity rich triangle.

1.4.2 Migration

- Most of the livestock stayed within satellite camps of the dry season grazing areas inside the Boni forest and parts of Lamu district, notably, around Witu division, and lower Tana River basin.
- More than a hundred households migrated and pitched camp with their livestock at Pangani, Malele and Korini in Lamu district while others such as those from Gababa migrated and settled elsewhere within the district. Migration and displacement of such number of households has not occurred in this district since 1992 and the underlying problem is related to food insecurity sparked off, perhaps, by unreliability of rainfall in recent years.

1.5 Implications on food security

The above conditions are expected to negatively affect food security situation.

2.0 Rural economy indicators (food availability)

2.1 Livestock production

2.1.1 Livestock body condition

- The livestock body condition and health status for goats showed improvement. However, there was no significant improvement in cattle to warrant comment in the month while the physical status of sheep deteriorated. Isolated cases of CBPP and black-quarter anthrax were reported in pastoral livelihood zone while cases of CCPP, Helminthiasis and Trypanosomiasis reported in the agro-pastoral livelihood zone of the district.
- However, mortality rate was minimal hence a positive herd growth was recorded for all species.
- No significant increase in milk yield was realized across the entire district when compared with preceding month and this attributed to diminished pasture levels. This condition negatively impacted on the nutritional status of children under five years and below besides undermining household incomes.
- The adverse impacts of Tsetse fly infestation continued to be felt in most of the pastoralists' livelihood zone triggering negative economic implications for households because of the cost of treating livestock.
- The trend was worsening when compared with same period of previous years where the body condition and production of livestock used to be good and had a positive impact on household food security.

2.1.2 Livestock diseases

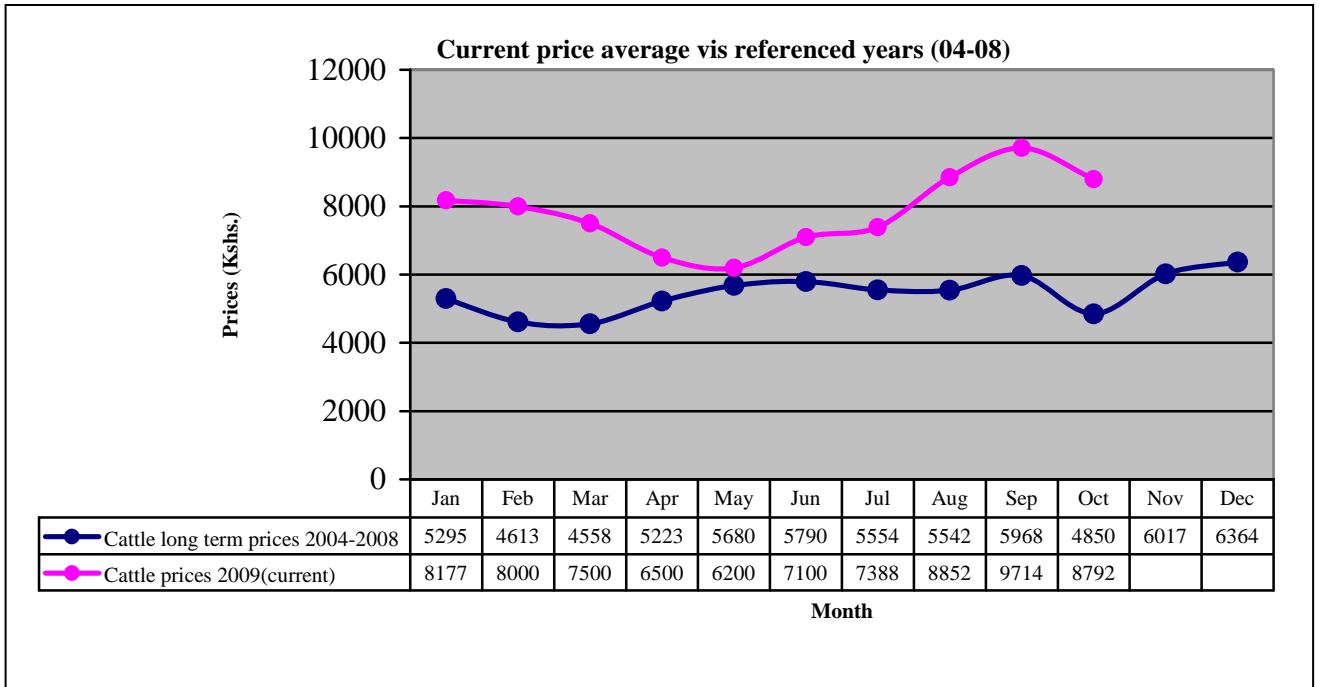
Diseases that were prevalent and affected livestock in all the livelihood zones are as indicated below:

- Cattle: LSD, CBPP, Trypanosomiasis and black quarter anthrax.
- Sheep: Helminthiasis, sheep introtoxicimea, pulpy kidney disease.
- Goats: CCPP, Helminthiasis & Trips.

2.1.3 Milk production

- No significant increase in milk yield was observed and the number of household that could afford for "Everyone" decreased
- The decreased milk production has negatively affected the household food security.

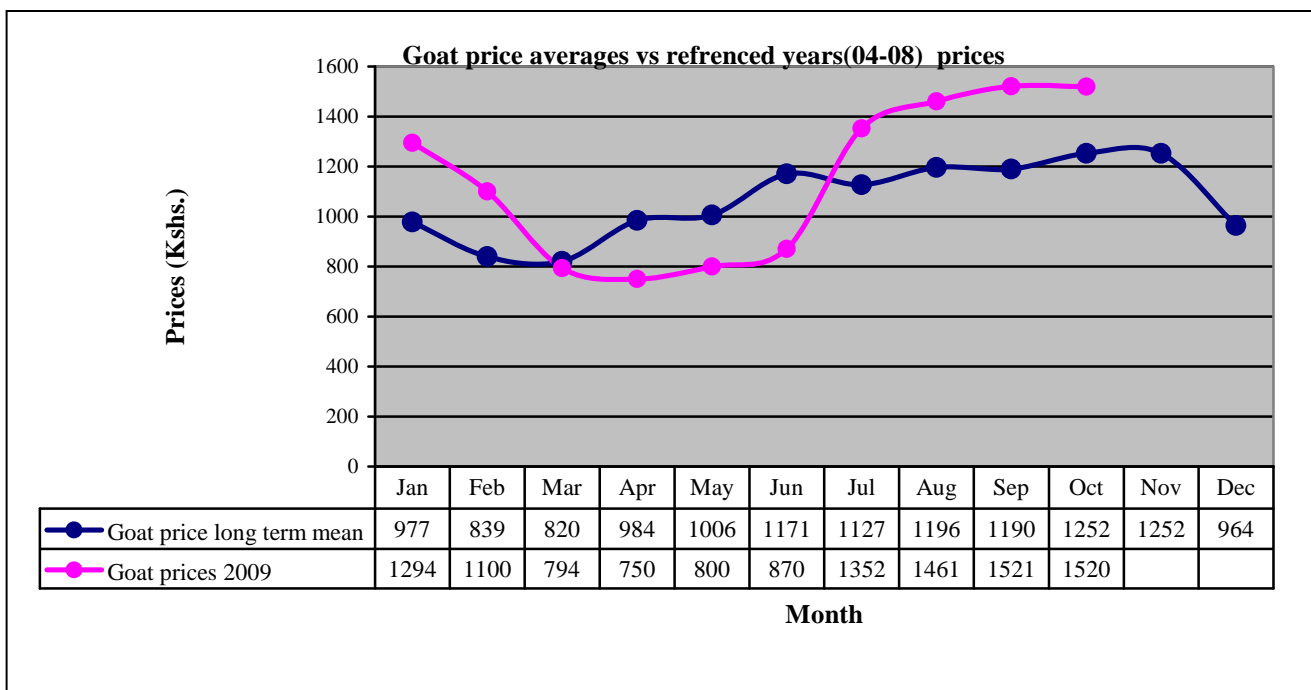
3.0 Access to food
3.1 Livestock marketing
3.1.1 Cattle prices



N-189

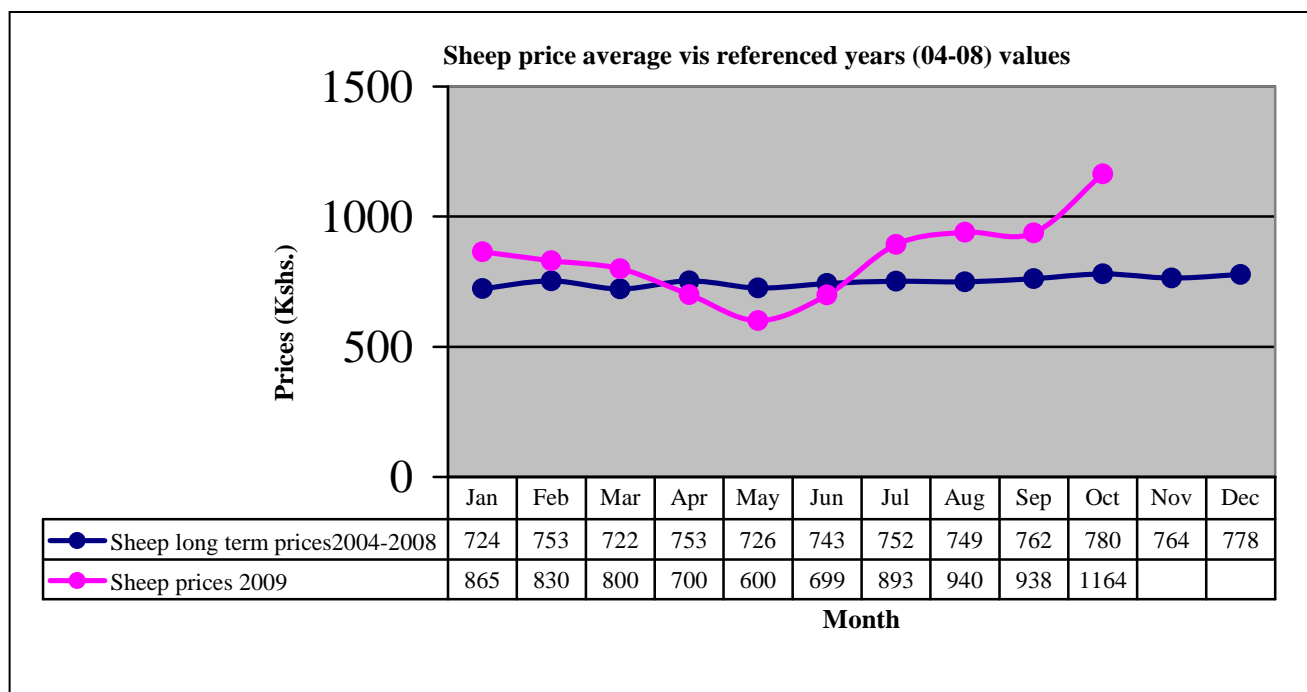
- Cattle prices decreased from Ksh9714 to Ksh 8,792. The trend is worsening in such season of the year and had negative effect on food security.
- Agro-pastoralist and pastoralist livelihood zones recorded the highest cattle prices at Ksh 10100 and Ksh10000 respectively.
- The price was higher than the Ksh 4,850 recorded for the same period of the reference year (04-08).

3.1.2 Goat prices



- Average goat prices slightly descended from Ksh1,521 to Ksh 1,520.
- Pastoralist livelihood zones recorded the highest prices at Ksh 1,690 and lowest at 1266.while Agro-pastoralist livelihood zone recorded the lowest at Ksh 675
- The price was much higher than the reference year’s Ksh 1, 252.

3.1.3 Sheep prices



N-320

- The prices of sheep increased from Ksh 938 to Ksh1164.
- Agro-Pastoralist livelihood zones recorded the highest price at Ksh 2500 while pastoralist livelihood zones recorded the lowest at Ksh720.
- The price was higher than Ksh 780 recorded for the same period of the reference year (04-08). The trend had negative impact on household food security

3.2 Livestock sales

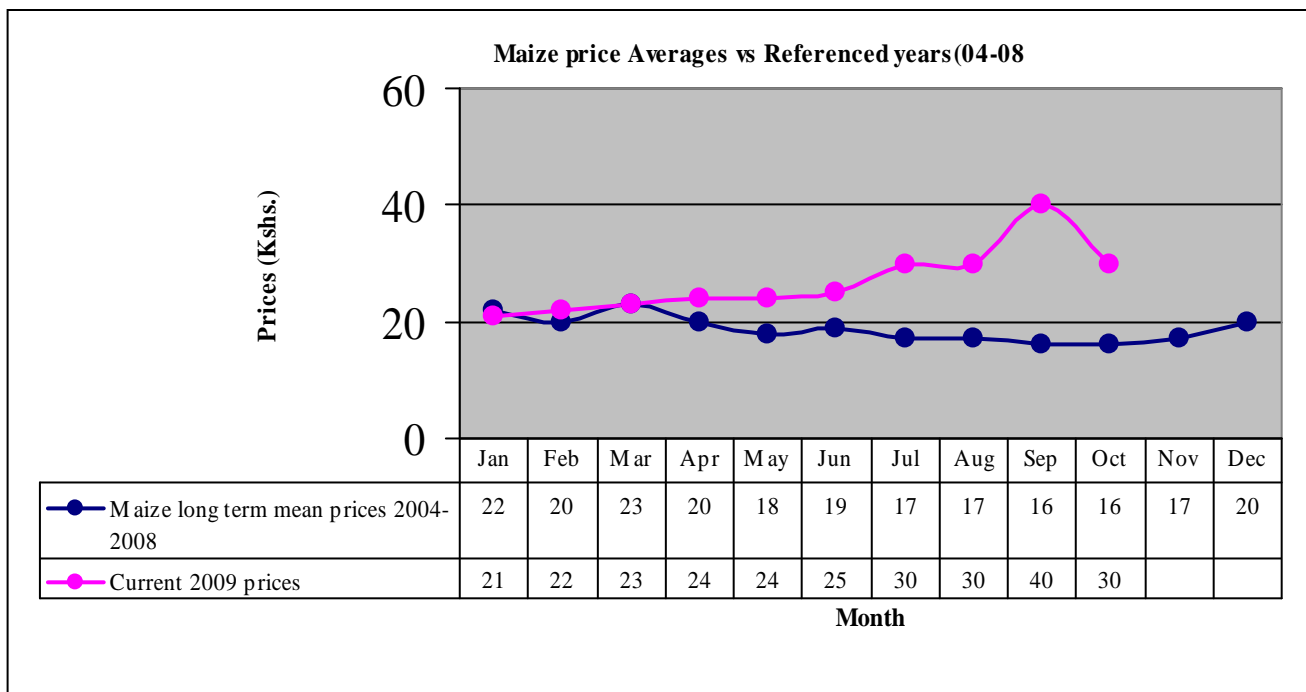
- The rate of livestock sales generally increased when compared to last reporting period for all categories of livestock. This trend was not normal at this time of year and had no impact on household food security.

3.3 Milk consumption

- Milk consumption was recorded to be still low.
- On average 10% of all household in the district could provide milk for their members.

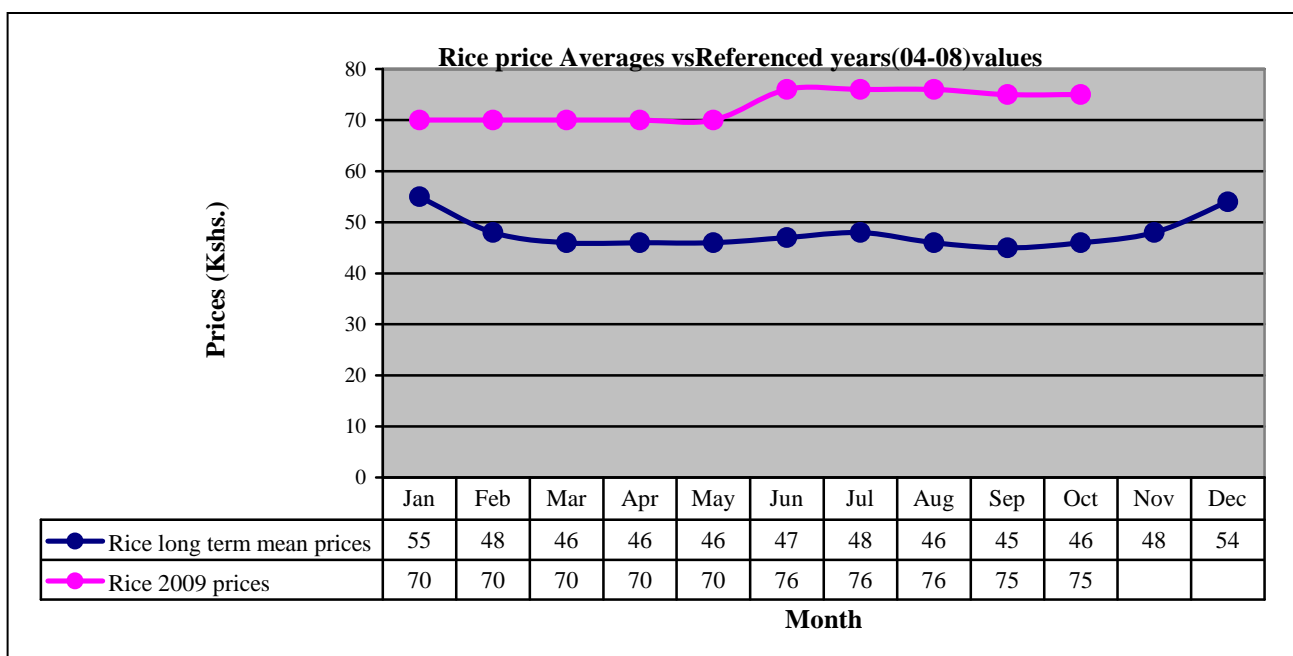
3.4 Food prices

3.4.1 Maize prices



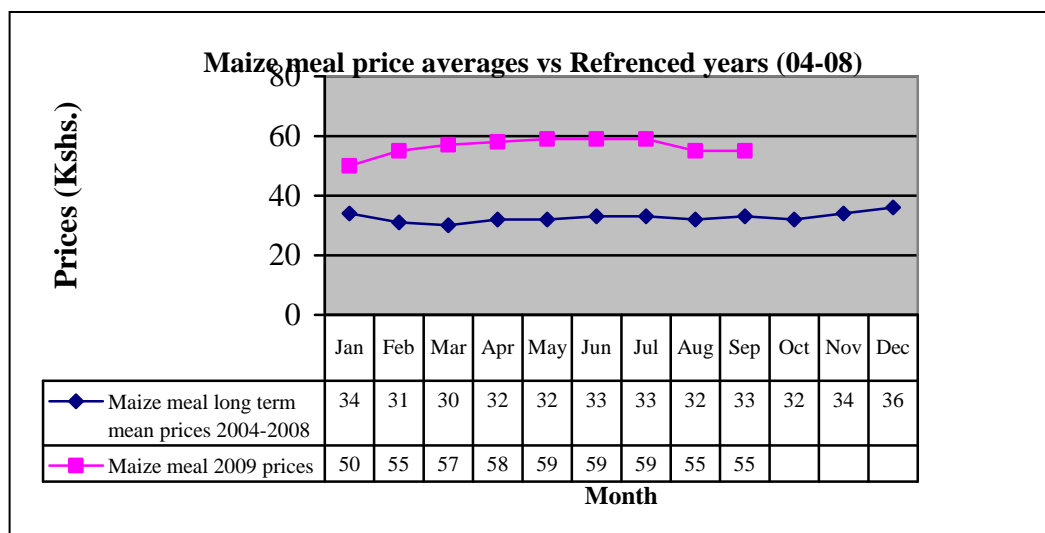
- Prices of food remained high during the month under review with no change from previous month levels. However, the average price of maize was stable and recorded Ksh30 for the month of August.
- The price appreciated when compared to the preceding month. The trend was not normal and had negative impact on food security.

3.4.2 Rice prices



- The average prices of rice remained stable and recorded at Ksh 75. This was much higher compared to the ksh46 recorded during the same period of the reference year (04-08).
- The trend was not normal and had negative impact on food security.

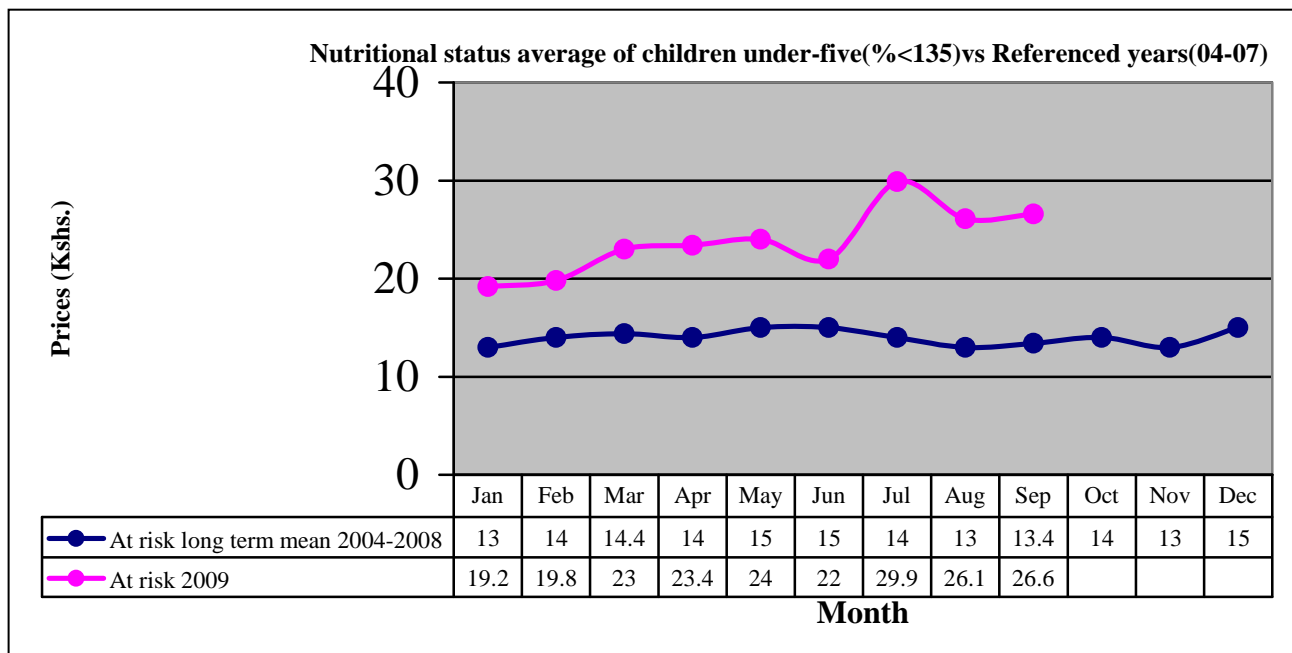
3.4.3 Posho (locally milled maize meal) prices



- The average price of sifted maize remained stable at Ksh55 for October 09.
- This was attributed to relief maize distribution in all the sentinel areas.
- This was much higher compared to the Ksh 33 recorded during the same period of the reference year (04-08). The trend had negative impact on household food security, as most households could not easily access this staple food.

4.0 Human welfare indicators

4.1 Nutrition status



N-1200

- During the month, the child nutritional status based on the MUAC measurement slightly decreased when compared with previous month and showed an improving trend as the percentage of children categorized as being “AT RISK” of malnutrition recorded at 26.7% of total assessed compared to last months’ 26.1%.
- Areas recording high percentages of children at risk of malnutrition were recorded as Pastoralist and agro-pastoralist livelihood zone of Aballatiro, Koranhindi, Handaro, Sangailu and Ijara. Pastoralist livelihood zone recorded 28% of all children at risk while agro pastoral livelihood recorded 36.3%.

4.2 Human health

- No disease outbreaks were reported. However Malaria and upper respiratory tract infections were the common ailments reported.

4.3 Flagged areas (affected areas)

- Pastoralist and agro-pastoralist livelihood zones of Koranhindi, Handaro, Sangailu, Ijara and Abalatiro areas were most affected.

5.0 Current interventions

5.1 Non- food interventions

- Construction of water harvesting structures for crop production by Ministry of Agriculture.
- Seeds distribution to crop farmers by ministry of Agriculture.
- Conducting of mobile outreach clinics by MOH/ALRMP 11.
- Distribution of Unimix by MOH/UNICEF.
- Vaccination against CBPP is currently ongoing.

5.2. Food aid

- Relief food being distributed under EMOP by KRCS.

5.3. Coping strategies

Among the coping measures adopted during the month were: -

- Collection and sale of bush products including honey and Aloe extracts.
- Herding and other casual work
- Sales of quarry products
- Petty trade.
- Collection and sales of firewood.

6.0 Recommendations to DSG and KFSM

- Strengthen outreach clinics and organise medical camps with other actors.
- Measures to curb wildlife should be strengthened by KWS.

- CCBP vaccination campaigns to continue across the district. Treatment of other diseases should accompany the exercise.
- Provision of safe drinking water to prevent outbreaks of diarrhea and other communicable diseases.
- Continue to encourage and support crop farming in the agro-pastoralist zones in order to enhance food security in the district through programmes such as Njaa Marafuku, provision of seeds and other inputs.
- Increase EMOP beneficiaries from the current 26,000 people to 60,000 in view of worsening household food security.
- Reducing levels of malnutrition in pregnant and lactating women and children under five years through provision of supplementary food and medical awareness programmes
- Continue to encourage implementing activities aimed at safe disposal of waste including human faecal matter across the entire district.
- Measures to combat malaria and implement good governance of water.
- Water trucking to institutions such schools, dispensaries, security posts that lie in areas hit hard by water scarcity should continue.
- Continuing vaccination/treatment efforts should be coupled with effective disease surveillance system by the veterinary department.
- Mainstream general natural resource management issues into the district development plans in order to cushion residents against drought and other forms of adversities accompanying climate change.
- Promote community conservancies.
- Conduct nutritional survey and house hold food security assessment.
- Introduce Food For Asset (FFA) programme.
- Provide livestock drugs subsidy for farmers.
- The borehole in Kotile should be urgently repaired for domestic water supply services resumption to those communities while the shallow wells at Abalatiro to be cleaned to boost production of clean water to residents. Similarly, the current up-grading of the urban water supply in Masalani should be speeded up to alleviate the unprecedented water shortage within the district headquarters while the completion of the water project at Hara should be speeded up.