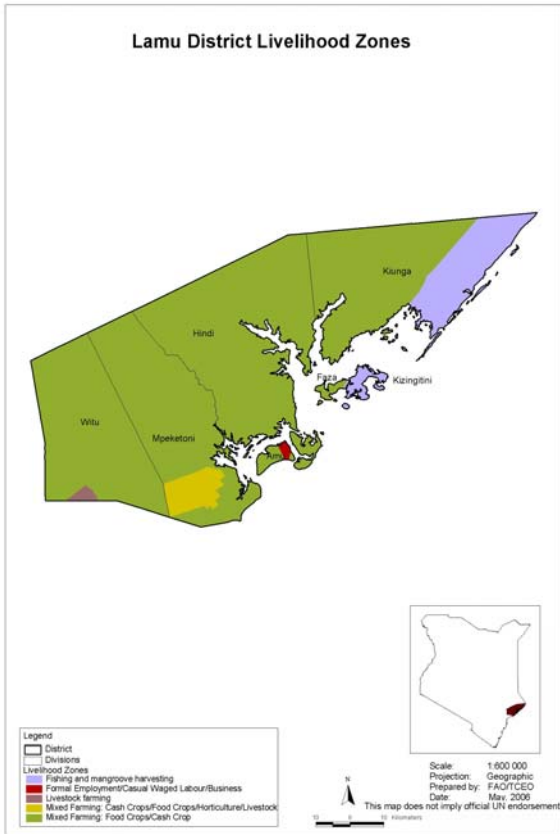




**OFFICE OF THE PRIME MINISTER
MINISTRY OF STATE FOR THE DEVELOPMENT OF NORTHERN KENYA AND OTHER ARID LANDS
ARID LANDS RESOURCE MANAGEMENT PROJECT II**

DROUGHT MONITORING BULLETIN, OCTOBER 2009

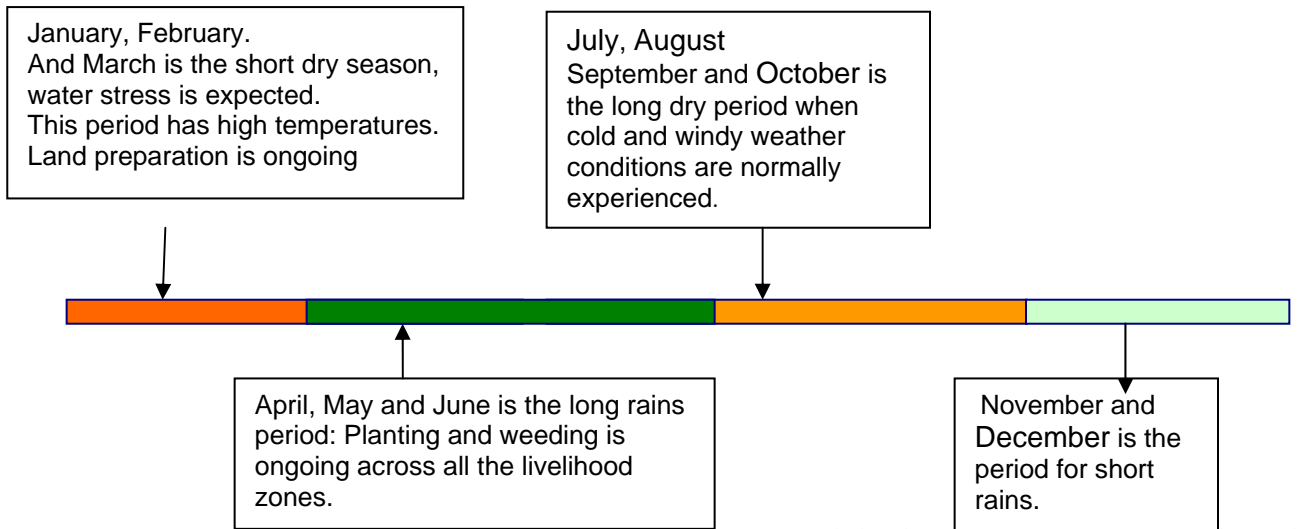
Lamu District



Warning stages

Livelihood Zone	Stage	Trend
Mixed Farming: Cash crops/food crops/ horticulture	Normal	Improving
Mixed Farming:/food crops/Cash crops /	Alert	Worsening
Livestock farming	Alert	Worsening
District	Alert	Worsening

Seasonal calendar



Situation overview

- The expected short rains are ongoing and are in larger than normal quantities. The district received average 185mm of rainfall up from 12.73 mm previous month and higher compared to same time long term average of 52mm.
- Pasture and forage availability deteriorated and was on a downward trend due to flooding.
- Average distances to grazing increased to 5.0 km up from 3.1 km the previous month, leading to declining livestock body condition.
Access to water and pasture deteriorated with the submerging of most pastures by floods and distances to water sources remained same as the previous month.
- Cattle prices increased by 4.94% compared to long term average of year 2006-08, this month unlike previous month's increase at 29% . Goat prices also increased compared to long term average of year 2006-2008 by 41.66%.
- Maize prices increased by 14.29% compared to the long term average of year 2006-2008 way above last month's increase of 36% , while that of beans went up by 9.44% up from 11.7 % previous month.
- The nutrition status of children below five years declined slightly during the month under review, with the percentage of those rated at risk of malnutrition rising to 5.2 from 4 in September.
- The situation in the district is still at alert stage and the trend is worsening.

Current interventions

Non-food intervention

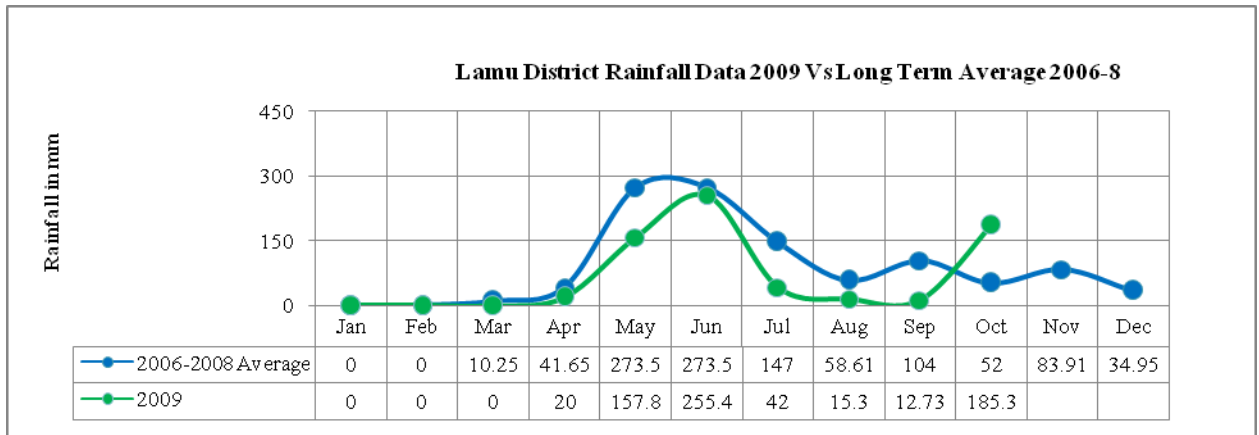
- Both District Veterinary Officers for Lamu west and Lamu east in collaboration with ALRMP are carrying out a district-wide livestock vaccination against notifiable diseases.
- Public health officers are busy tackling the recent cholera outbreak and has been contained, in collaboration with ALRMP.

Recommendations to DSG and KFSM

- The DLPO and DVO to continue addressing issues of livestock diseases and pastures by incoming livestock from neighbouring Ijara and Tana River Districts.
- County council and other environment stakeholders to help in ensuring all drainages are running well.
- DSG to rescue poorly stored maize harvested in the Barani area of over 50,000 bags by transporting to nearby stores or NCPB.

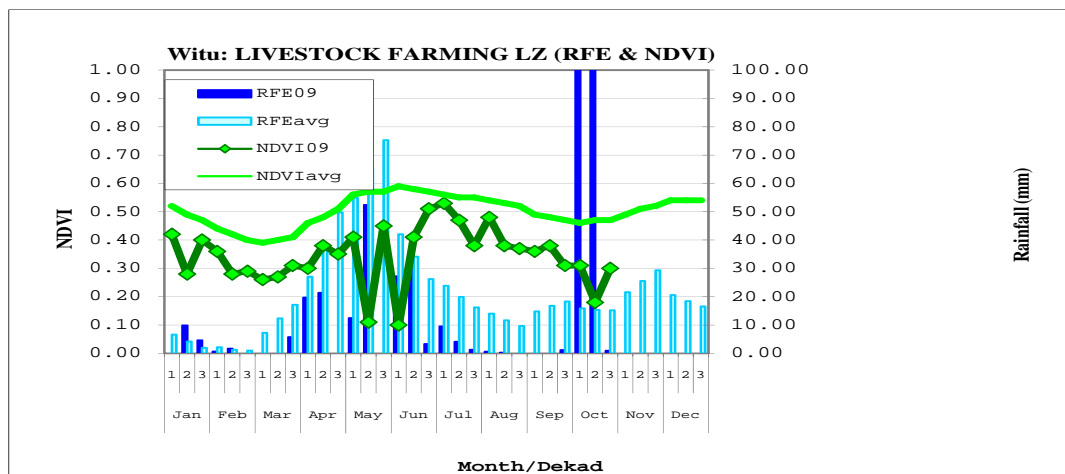
1.0 Environmental indicators (Stability)

1.1 Rainfall

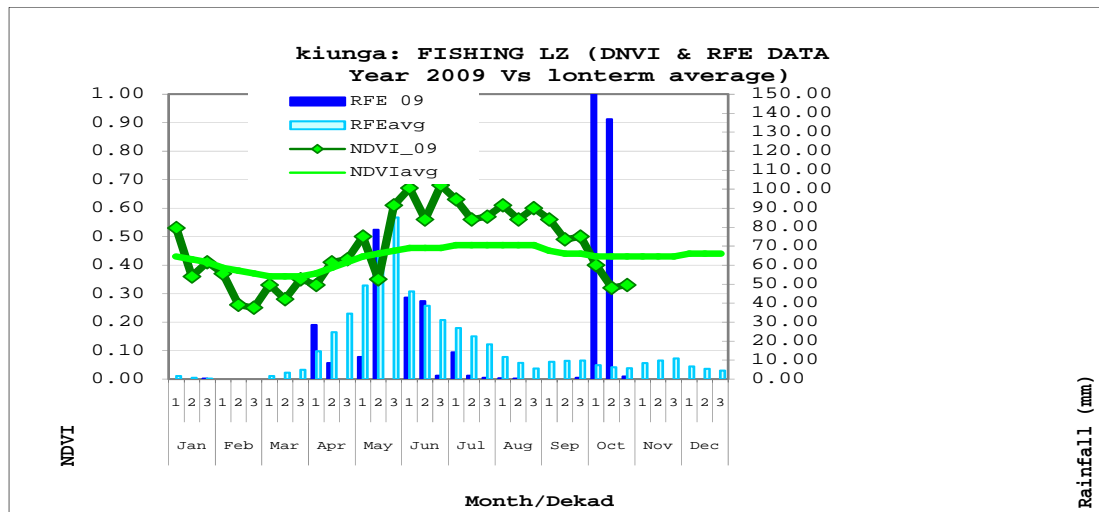


N=4 (i.e 4 rain gauges across the District)

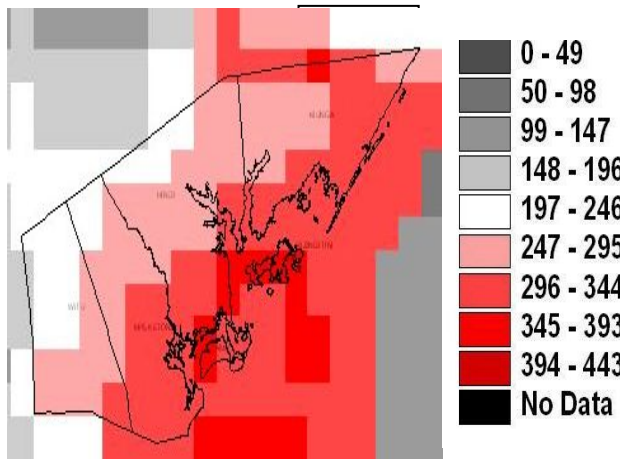
- The expected short rains are ongoing and are in larger than normal quantities as shown in the graph and maps below. There has been too much rainfall, above normal and evenly distributed across the district. The district received average 185mm of rainfall up from 12.73 mm previous month and higher compared to same time long term average of 52mm.
- This was not a normal trend across all the livelihood zones as shown by the long term average.



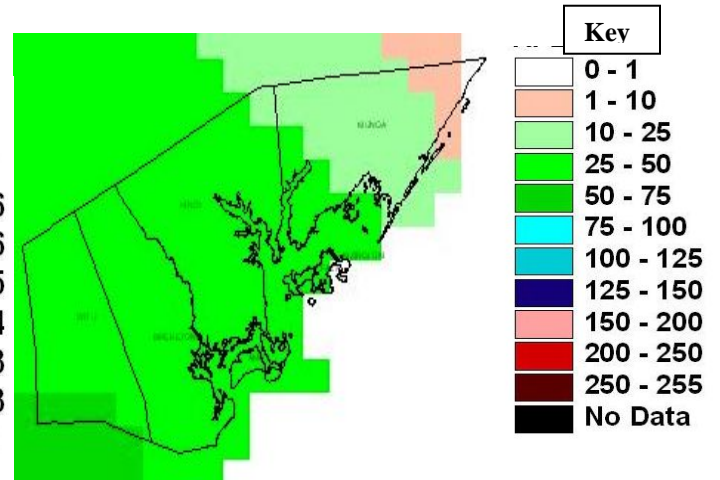
- Witu and Kiunga are divisions in the extreme south and north parts of the larger Lamu district and both received excessive rainfall above 200mm for the three dekad of October as shown in the graph. On long term average the region receives between 25-75 mm at this time of the year.



Lamu District Current Rainfall Distribution for October 2009 in mm

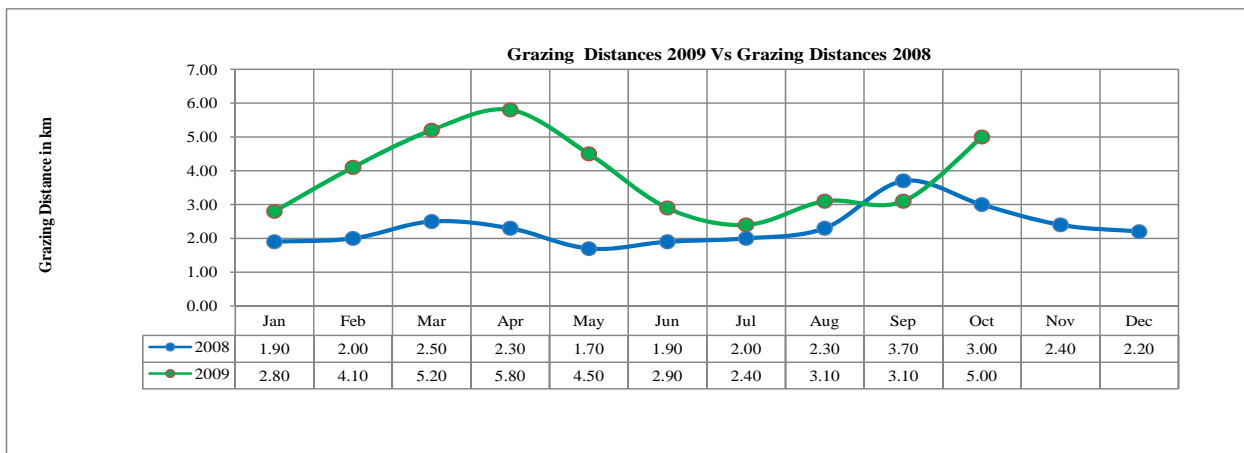


Lamu District Normal average Rainfall Distribution for October 2009 in mm



- As shown in the charts, the long term average was between 25-75mm or above for the month of October while the current amount is between 247-393mm for most parts of the District.

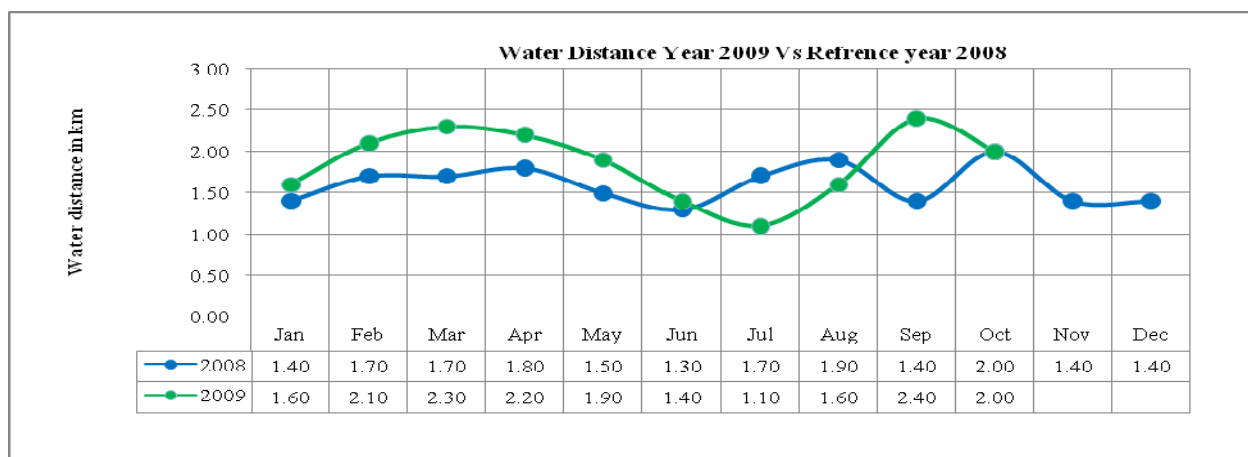
1.2 Condition of natural vegetation and pasture



N=330

Pasture and forage availability deteriorated and was on a downward trend due to flooding. Average distances to grazing increased to 5.0 km up from 3.1 km the previous month.

1.3 Water sources and availability



N=330

- The average distance to water sources was at 2km, down from 2.4 km the previous month and is decreasing due to ongoing rainfall.
- Shallow wells and boreholes were the major household water source at 37% and 27% each, followed by natural ponds and rivers each at 10%. This is however normal at this time of the year.

1.4 Emerging issues

1.4.1 Livestock migration

- The ongoing short El nino type rains caused a variety of livestock diseases, cholera outbreak and break down in road transport. This has however been mitigated except for the road transport that is still pending.

1.4.2 Implications on food security

- Pasture and forage conditions began to deteriorate, leading to declining animal body condition. This was caused by excessive flooding in the area. Ongoing harvests ensured availability of food stocks in the households.

2.0 Rural economy indicators (Food availability)

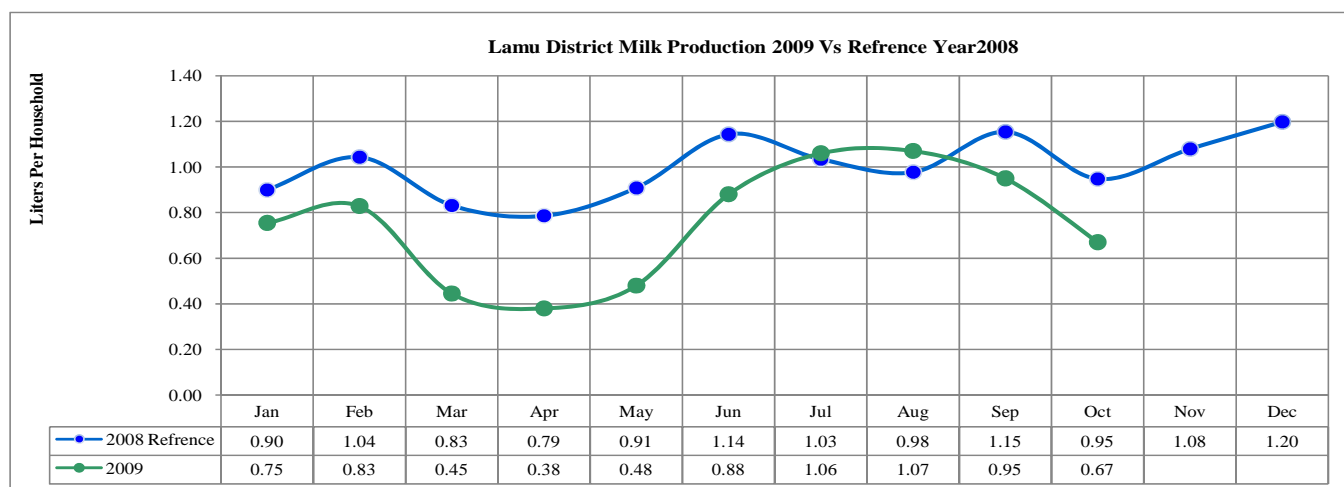
2.1 Livestock body condition

- The livestock body condition for cattle, goats and sheep begun to deteriorate and the trend is expected to worsen with the ongoing rainfall season.

2.1.1 Livestock diseases

- Foot and mouth disease outbreak was reported in the district but has been contained, though vaccination was ongoing for other notifiable diseases.

2.1.2 Milk production



n=330

- Milk production averaged 0.67 liters per household per day, which was lower than last month's production of 0.95 liters per household per day.
- This was due to livestock congestion, causing pasture availability and quality to drop. It was also caused by deteriorating pasture courtesy of flooding.
- Households in the mixed farming: food crops /cash crops livelihood zone produced the least amounts at 0.40 liters per household per day, while the livestock livelihood zone produced the highest amount of milk at 1.46 liters per household per day down from 2.61 liters previous month. That was however normal at the time of the year.

2.2 Crop production

- Harvesting of both cereals and legumes was ongoing, though others were at the weeding stage.
- Crops harvested faced massive destruction by ongoing rainfall and may not be for human consumption if not rescued soonest.

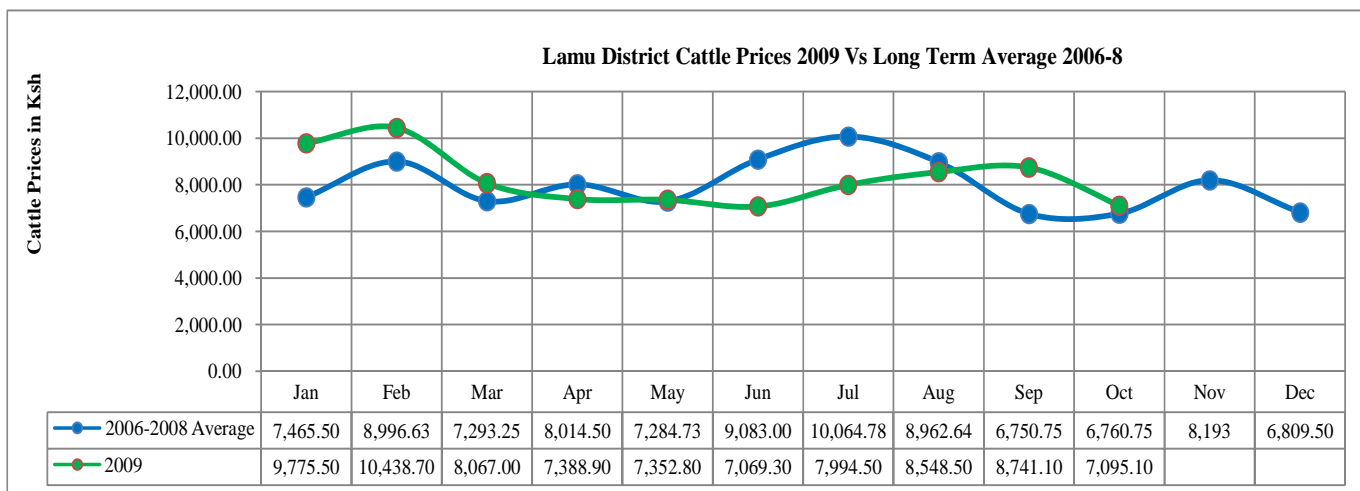
2.3 Implications on food security

- The drop in milk production was an indicator of decreased milk availability and raises concerns for food insecurity, especially for the pastoral/livestock livelihoods.
- Ongoing rainfall on already harvested crop could make it unfit for storage.

3.0 Access to food

3.1 Livestock marketing

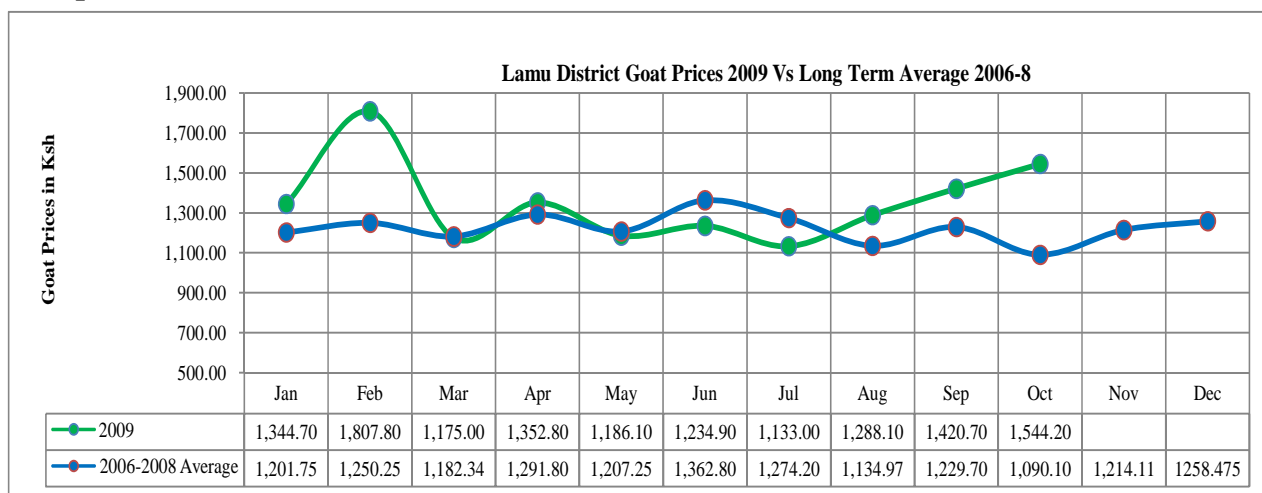
3.1.1 Cattle prices



n=330

- The average cattle price at farm-gate level was Ksh7,095.10, which was lower than previous month's Ksh8,741.10. This was also higher compared to the price at same time of the long term average price of Ksh 6,750.75.
- The difference could be attributed to the period normally being a harvest season so livestock keepers tend to sell less, but due to the influx of animals, many were still disposing of their stock.
- Highest cattle prices were recorded in the mixed farming: food crops /cash crops livelihood zone at Ksh8,181.80, while the livestock farming livelihood zone recorded the lowest at ksh.6,008.30 previous month. This was however not a normal trend at this time of the year, going by 2006-8 average.

3.1.2 Goat prices



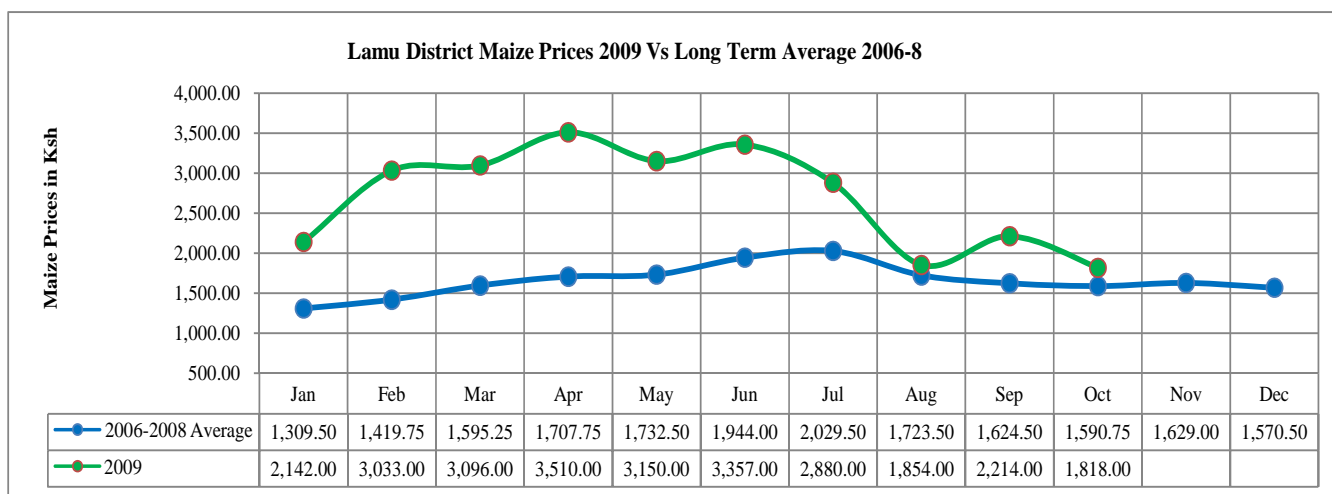
n=330

- The average goat price at farm-gate was Ksh1,544.20 which was higher than that of last month at Ksh1420.70 and also higher than that of same time in the year 2006-8 average of Ksh1,090.10.
- This was a normal trend at the time of the year going by the 2006-8 long term average.

- Highest prices were recorded in mixed farming: cash crops/food crops/ horticulture livelihood zone at Ksh1,662.50 while the lowest were recorded in the mixed farming: food crops /cash crops livelihood at Ksh1,420.

3.2 Crop prices

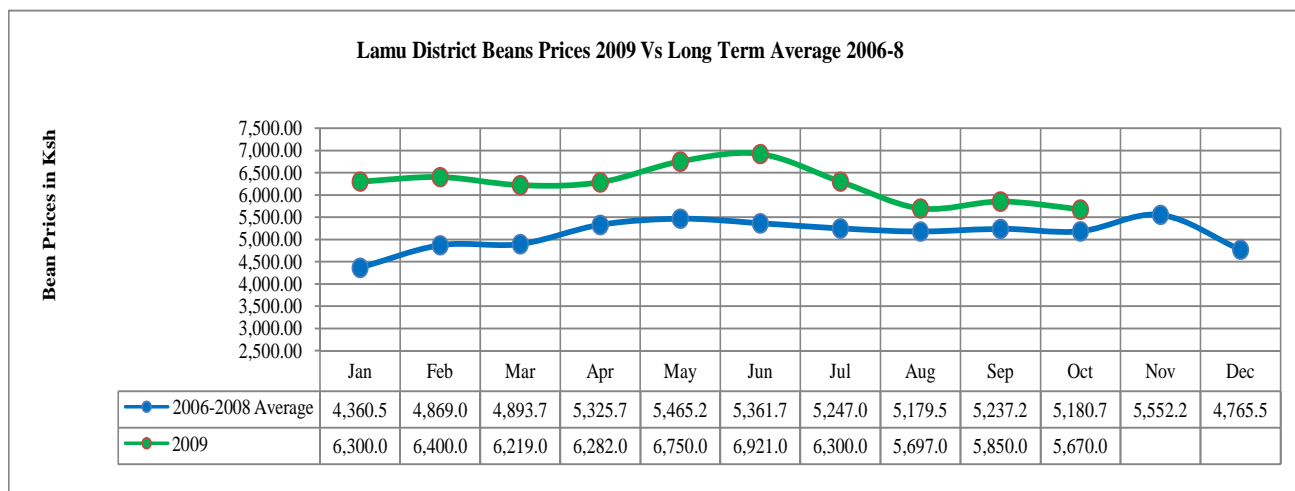
3.2.1 Maize prices



n=330

- Maize prices at market level averaged Ksh,818 per 90kg bag, which was higher than last month's price of Ksh 2, 214. This was lower than the price at the same time of the long term average of year 2006-8 of Ksh.1, 590.75.
- Lowest maize prices were recorded in the livestock livelihood zone at kshs 1800 while the highest were recorded at the mixed farming: cash crops/food crops/ horticulture livelihood zone at Ksh1,836. The drop was due to recent harvests.

3.2.2 Beans prices



n=330

- Average price of beans at market level was Ksh5,670 per 90Kg bag, which was higher than that of last month at Ksh5,850 and higher than the long term average of year 2006-8 of Ksh 5,180.70.

- This was however normal trend at the time of the year in the district going by 2006-8 average.
- The prices were recorded only in the mixed farming: cash crops/food crops/ horticulture livelihood zone.

3.3 Income

3.3.1 Crops income

- Income from crops accounted for 21% of total house hold income, higher than last month's rate of 14.33%. This is however normal at this time of the year.
- The highest rate was recorded in the mixed farming: food crops/cash crop livelihood zone and the lowest recorded in the livestock livelihood zone.

3.3.2 Livestock income

- Sale of livestock accounted for 6.4% of total household income lower than previous month's rate of 8.7% while livestock products accounted for 2.6% down from 4.54% previous month. This was however not normal at the time of the year. Incomes were mainly realized from livestock livelihood zone with least sales realized in the mixed farming: cash crops/food crops/ horticulture livelihood zone.

3.3.3 Other income

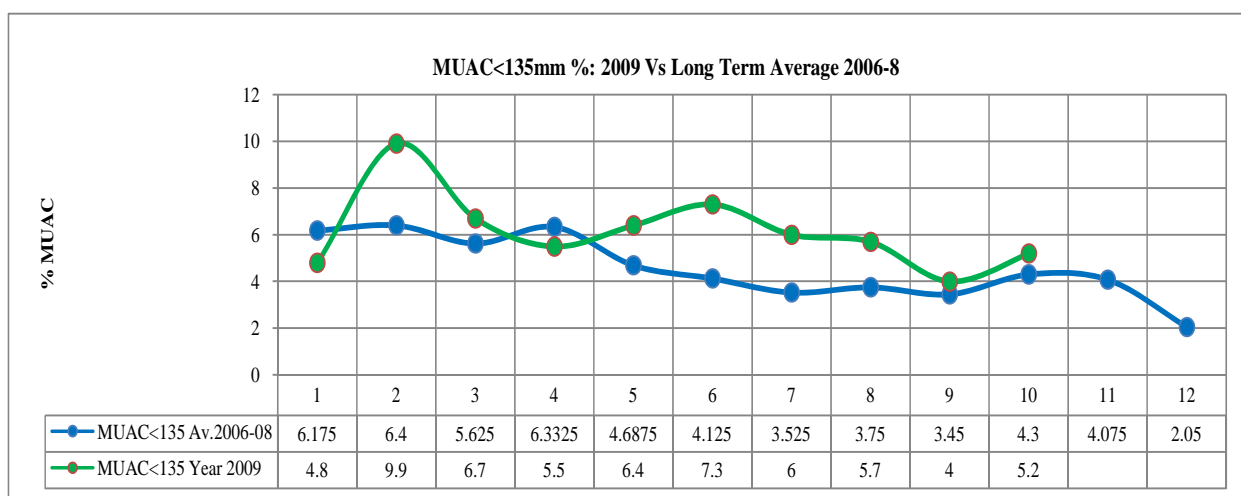
- Casual labour was the main source of income during the month, accounting for 50.6% of the house hold income up from 44.75% previous month.
- Petty trade accounted for 9.3% of the total household income emerging as livelihood source.
- The highest rate was recorded in the mixed farming: food crops/cash crop livelihood zone and the lowest recorded in the livestock livelihood zone. This was however normal at the time of the year.

3.4 Implications on food security

- The increase in dependency on crop sales shows its availability has improved.
- The increase in livestock sales dependency indicates a disposal trend for fear of lack of pastures especially in the overstocked areas.

4.0 Human welfare indicators (Utilisation of food)

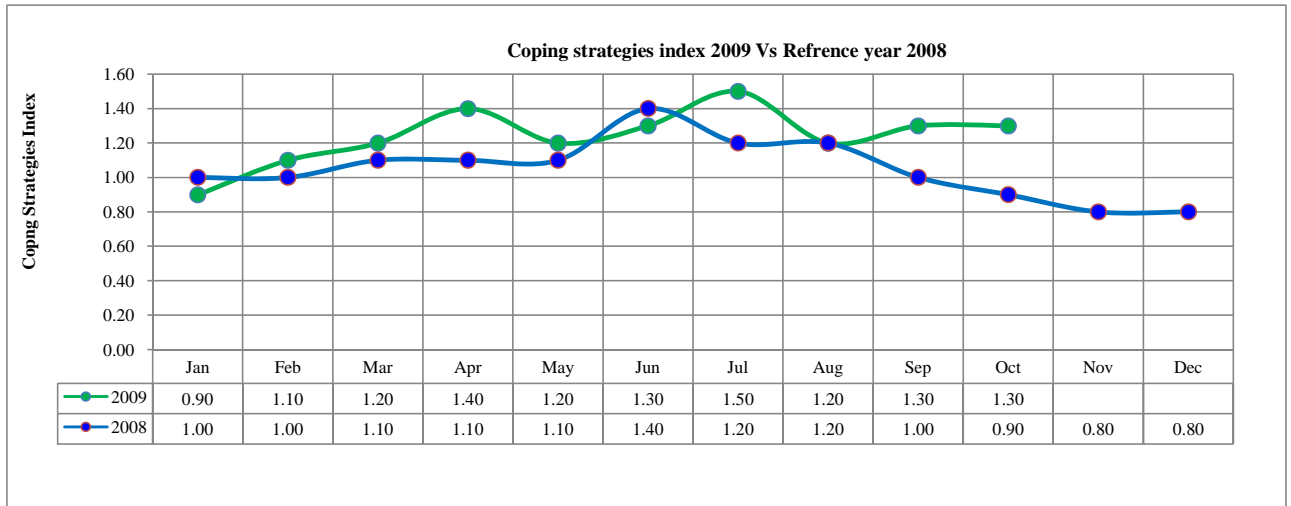
4.1 Nutrition status



n= 1175

- The nutrition status of children below five years declined slightly during the month under review, with the percentage of those rated at risk of malnutrition rising to 5.2 from 4 in September.
- The rate was higher than the 2006-8 long term average of 4.4%. The livestock farming livelihood zone reported the highest rate at 7.2% , which was higher than previous month's 5.9%. Mixed farming: Cash crops/food crops/ horticulture livelihood reported the lowest at 3.9%. This was an indication of stable food security situation across all livelihood zones, except the livestock livelihood zone that is still recovering from effects of drought. This was however a normal trend.

5.1 Coping strategies



n=2000 (no of human population sampled)

The coping strategy index was at 1.3 similar to previous month. The highest index of 1.9 was recorded in the mixed farming: Cash crops/food crops/ horticulture livelihood zone while the lowest of 0.9 was recorded in the livestock farming livelihood zone.