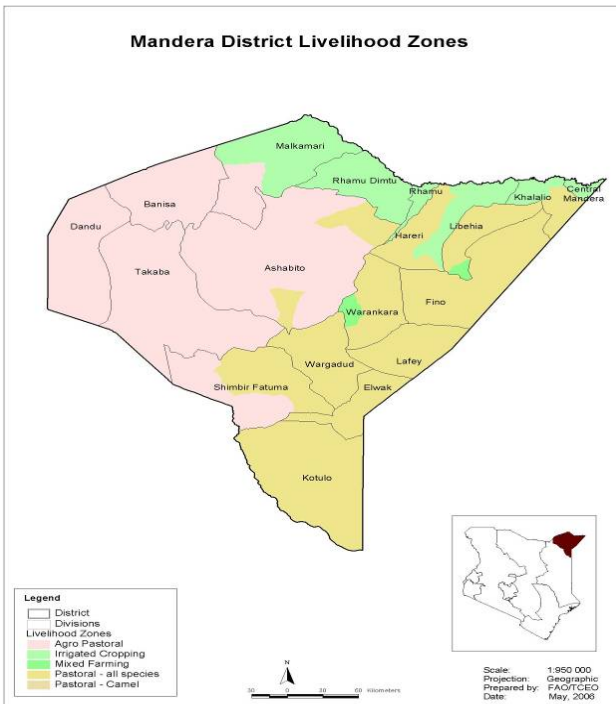




OFFICE OF THE PRIME MINISTER
MINISTRY OF STATE FOR THE DEVELOPMENT OF NORTHERN KENYA AND OTHER ARID LANDS
ARID LANDS RESOURCE MANAGEMENT PROJECT II

DROUGHT MONITORING BULLETIN, OCTOBER 2009

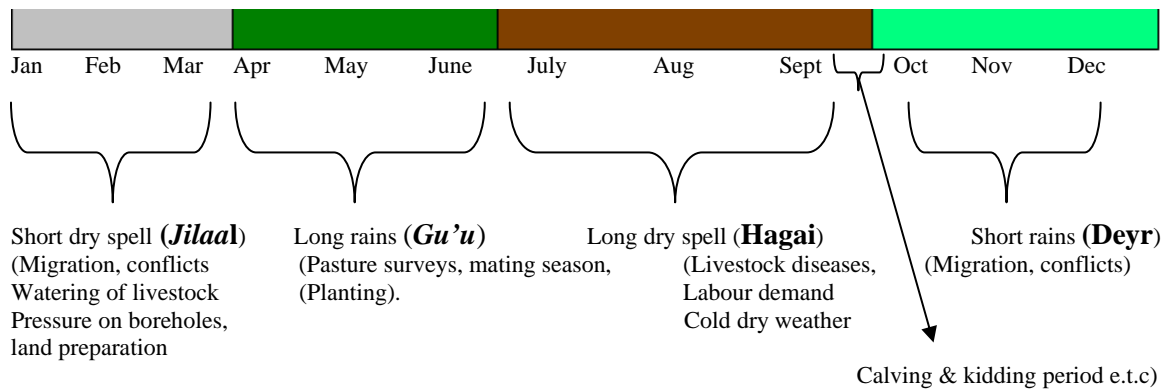
Mandera District



Warning Stages

Livelihood Zone	Warning stage	Trend
Pastoral- all species	Emergency	Improving
Agro pastoral	Emergency	Improving
Irrigated Cropping	Emergency	Improving
District	Emergency	Improving

Seasonal Calendar



Situation overview

- Rainfall was received in all parts of the larger district during the reporting month.
- Most of the pans and underground water tanks impounded water during the 3rd week of the month.
- Pasture quality and quantities were poor in all the divisions during the first to 3rd week of the month but started regenerating when the short rains started and this is expected to improve in the coming period.
- Livestock body conditions were still poor for the month of October despite the short rains but are expected to improve in the coming period. Increased shoats deaths were reported as short rains progressed in all parts of the district due to initial weak livestock body condition and increased weather related diseases.
- The average household prices of livestock decreased when compared to the preceding month. The main sources of income for the month of October were sales of livestock and casual labour.
- Cases of Contagious Caprine Pluro Pneumonia (CCPP) and suspected cases of PPR diseases were reported in the larger district during the month under review.
- Cereal and legume prices increased compared to the previous month.
- There were no insecurity incidences reported during the month under review.
- Some houses and schools in Elwak town were submerged in water due to heavy down pour of rains, hence a lot of stagnant water, which is likely to course health hazards if not drained.
- The nutrition status of children below five years declined slightly during the month, with the percentage of those rated at risk rising by 0.5% compared to the previous month.
- The drought stress declined in all divisions as compared to the situation in previous month and trends is improving.

Recommendations to DSG and KFSM

- Health education for communities on disinfection of water for purification, especially earth pans and under ground water tanks in fear of outbreak of diarrhea and other water borne diseases and provision of chlorine -Action Ministry of Health.
- Provision of adequate drugs at rural dispensaries and health services anticipating outbreak of water borne diseases and provision of treated nets to poor households in the affected areas-Action Ministry of Health, Ministry of Water.
- Vaccination and mass treatment of CCPP and PPR disease in the entire district -Action – DVOs.
- Supplementary feeding to continue so as to reduce the malnutrition- Action MOH,AAH, Islamic Relief and Save the Children (UK).

Current interventions

Non-food aid

The following interventions were carried out during the month in the district;

- ALRMP and MW&I carried out water trucking in water stressed areas of Mandera West, North, Central, and East districts. This was the 1st and 2nd week of the month before the onset of the short rains.

Food aid

- Supplementary feedings by Action Against Hunger, Save the Children (UK) and Islamic Relief.
- Therapeutic feeding centers (TFC) in Mandera district hospital by ACF.
- Distribution of relief food by WFP & COCOP with total beneficiaries of **117,000** persons for the month of October, Food movement was curtailed due to poor roads.

1.0 Environmental indicators (Stability)

1.1 Rainfall

- Rainfall was received in all parts of the larger district during the reporting month.

Station	Actual Amount	Normal Rainfall Expected	Trend
Mandera	171.3	44.7	Above Normal
Rhamu	137.4	44.5	Above Normal
Elwak	131.6	34.9	Above Normal

Source: Metrological station- Mandera

- In general, all the stations received above normal rainfall with other stations in the district registering above normal rainfall in the entire district.

1.2 Condition of natural vegetation and pasture

- Pasture quality and quantity was poor in all the divisions during the first to third week of the month but started regenerating when the short rains started and improved compared to previous month.
- The average distance to grazing areas was 18.0 km while average house distance was 11.9km, and when compared to last month, the average grazing distance decreased by 6.2Km. The average grazing distance is expected to reduce as more rains are expected.

1.3 Water sources and availability

- The main water sources for the larger district livelihoods zones were boreholes, River Daua, shallow wells, underground water tanks, water trucking and few major earth pans.
- Most of the earth pans and underground water tanks in the larger district impounded water and water tankers are back from the field.

1.4 Emerging issues

1.4.1 Security

- There were no incidences of insecurity reported during the month under review.

1.4.2 Migration

- There was no in and out migration reported during the month under review.

1.5 Implications on food security

- Availability of water, pasture and browse in the coming 3 weeks is expected which in turn will improve the body conditions of livestock and this will have positive economic impact on pastoralists.

2.0 Rural economy indicators (Food availability)

2.1 Livestock production

- The main livestock reared by the pastoralist are camel, cattle, goats and sheep. Camel & cattle being long term assets while shoats are short term assets/current assets.

2.1.1 Livestock body condition

- The livestock body condition was fair and is expected to improve in the coming period due to availability of pasture and vegetations in the coming weeks.

2.1.2 Livestock diseases

- Contagious Caprine Pluro Pneumonia (CCPP) and suspected cases of PPR were reported during the month under review.

2.1.3 Milk production

- Milk was available in most of the divisions in the district due to regenerated pasture and browse in all parts of the district.

2.2 Crop production

2.2.1 Timelines and status of crop production

- In the agro-pastoral and irrigated zones farmers started planting crops maize, sorghum and cowpeas during the short rainy season.

2.2.2 Pest and diseases

- There were no pests and diseases reported during the month.

2.2.3 Harvests

- No harvest made during this month under review in all livelihood zones.

2.2.4 Implications on food security

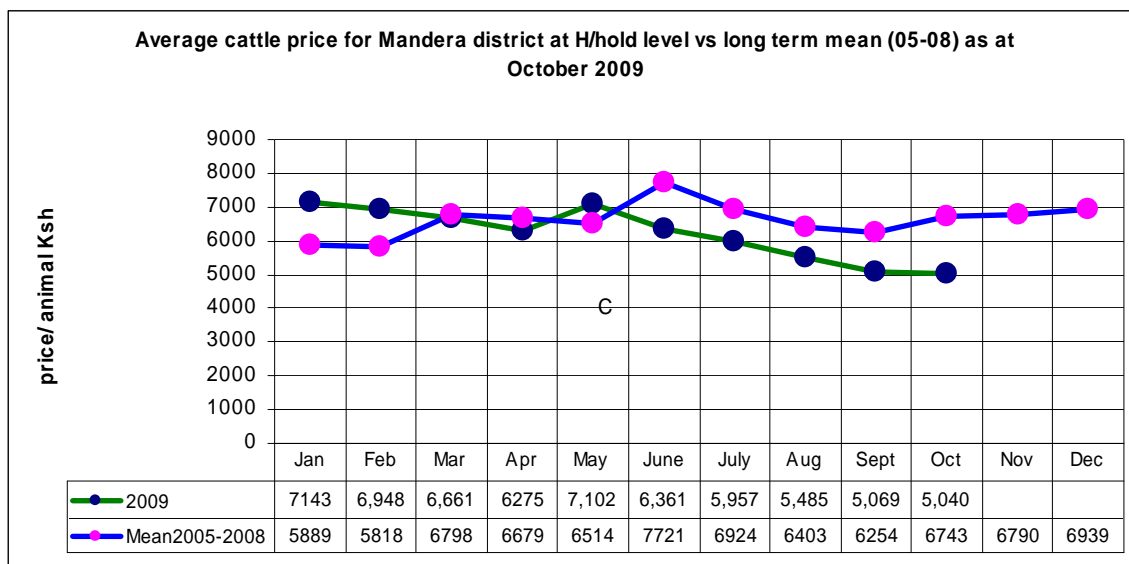
- On pastoral and agro-pastoral zones, farmers have started planting crops and this is a sign of positive food security.

3.0 Access to food

3.1 Livestock marketing

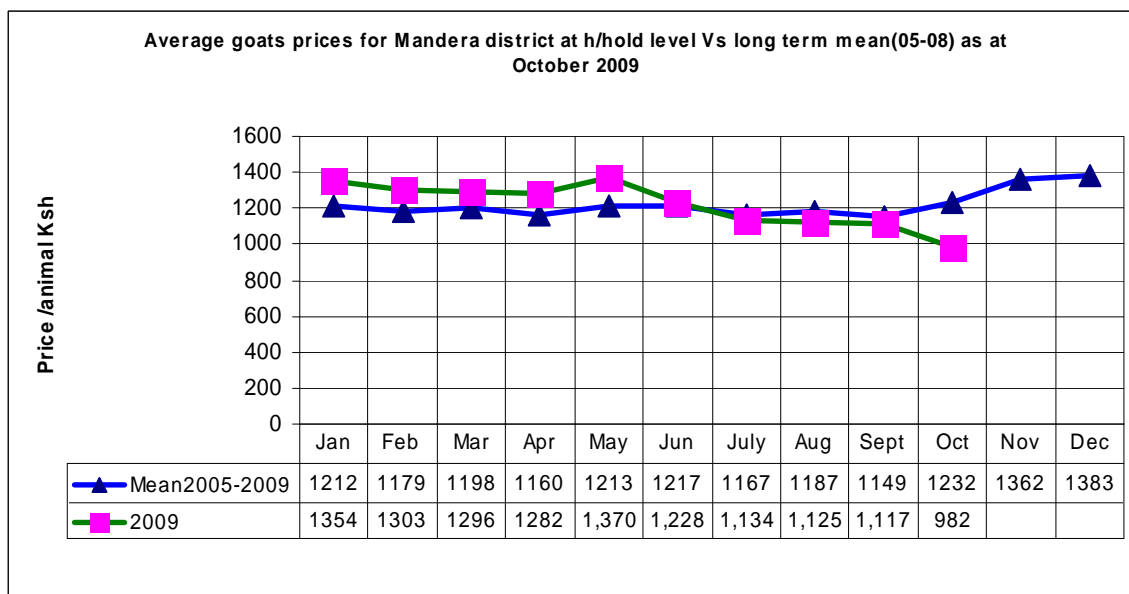
3.1.1 Cattle prices

- Average cattle prices decreased from Ksh5, 069 to 5,040 in October due to poor body condition and low market demand.
- Compared to long term mean, the average price was lower by Ksh1,703.
- The highest price was noted in pastoral all species at Ksh5,350, followed by Agro pastoral at Ksh4,968 and Irrigated cropping zone at Ksh 4800.



NB: No. of Households: 417

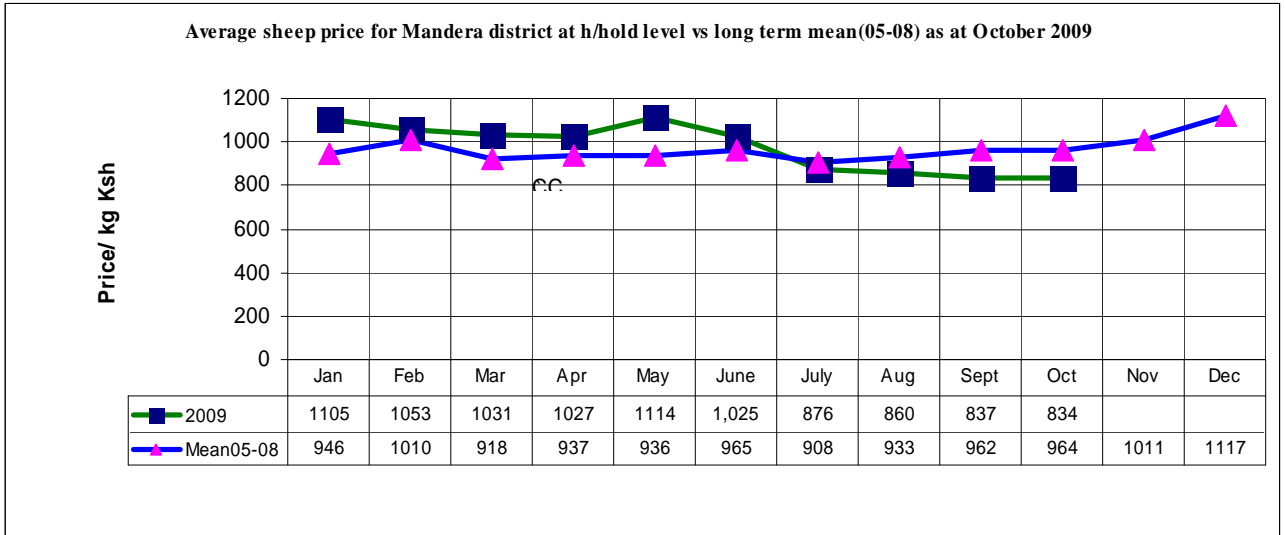
3.1.2 Goat prices



NB: No of Households :(N) 417

- Average goat price decreased from Ksh1, 117to Ksh982 in October. The decreased price was attributed to poor body condition.
- The decreased goat prices eroded the purchasing power and food security of the households as goats were the main livestock sold to meet every day need for rural households.
- Compared to long term mean, the average price was lower by Ksh250.
- Pastoral all species zone recorded the highest average prices at Ksh1,162 followed by Irrigated cropping zone at Ksh1,114 and Agro- pastoral zone at Ksh669.

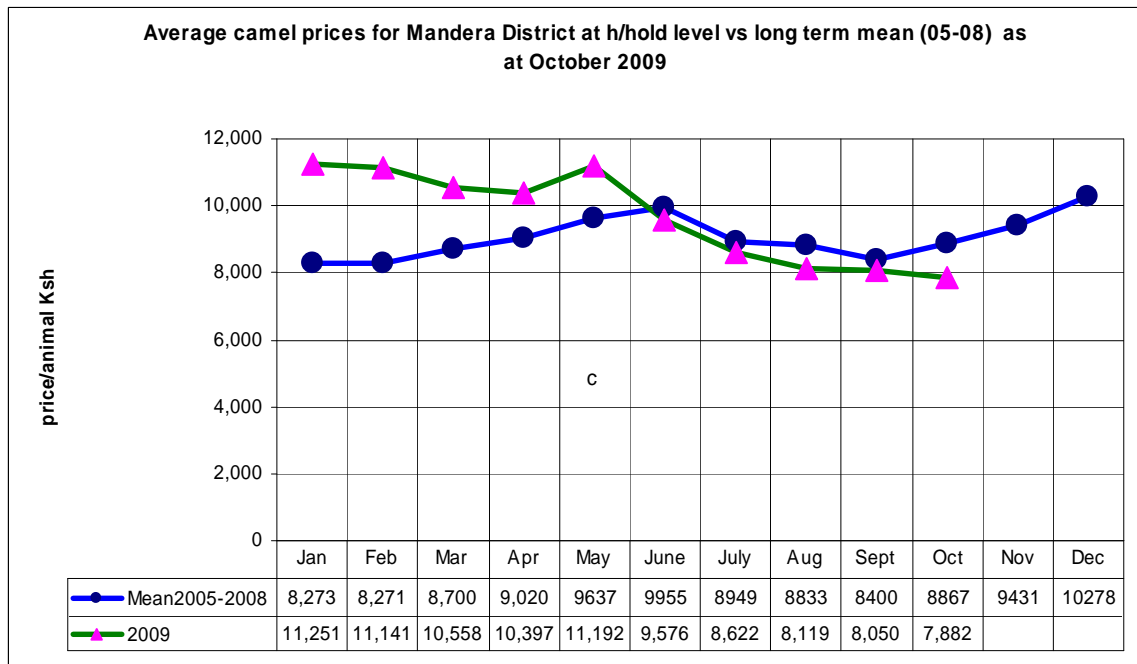
3.1.3 Sheep prices



: No of households :(N) 417

- Average sheep prices decreased from Ksh837 to Ksh834 in October due to poor body condition.
- Compared to long term mean, the average price was lower by Ksh130.
- The highest average price was noted in irrigated cropping zone at Ksh985 followed by Pastoral all species at Ksh936 and Agro-Pastoral at Ksh580.

3.1.3 Camel prices



: No of households :(N) 417

- Average camel price decreased from Ksh8, 050 to Ksh 7,882 in October.
- The decreased price was due to poor body condition of livestock and low market demand.
- Highest price was recorded in the Agro pastoral zone followed by pastoral all species.
- On the other hand, the average price for the long term was higher by Ksh 985 as shown on the graph above.

3.2 Livestock sales

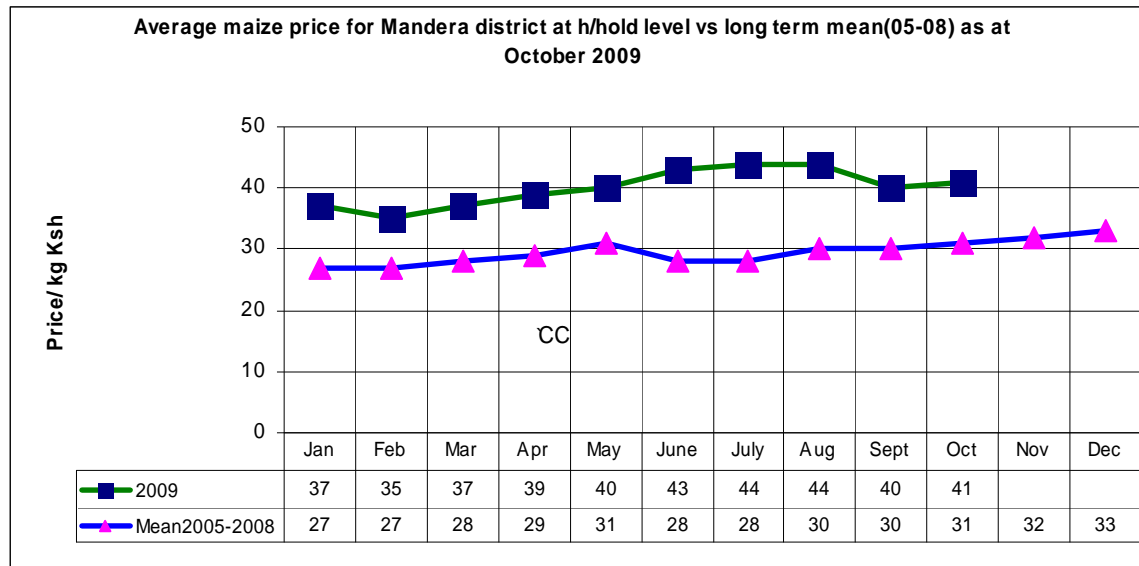
- The average sales of goats, cattle, camel and sheep were 278, 37, 26 and 136 respectively with total sales of 477 during the month of October.
- In the previous month, sale volumes were 378 species of animals.
- The trend increased during the month of October compared to previous month.
- The highest sales of cattle were in Agro- pastoral followed by pastoral all species, sheep in pastoral all species followed by Agro-pastoral and goats in pastoral all species followed by irrigated and camel in Agro-pastoral followed by pastoral all species.
- Most households depended on livestock to meet their basic needs.

3.3 Milk consumption

Milk availability slightly improved because of the short rains.

3.4 Crop prices

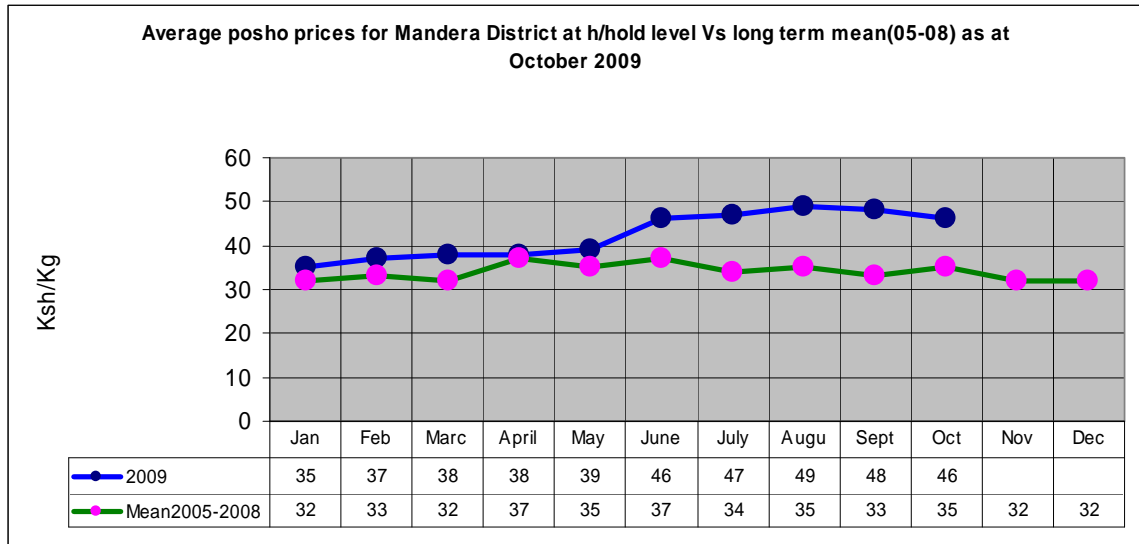
3.4.1 Maize prices



: No of households: (N) 417

- The observed average maize price during the month was Ksh41 per kilo.
- Compared to last month, the average price increased by Ksh 1.
- Compared to long term mean price, the average price was higher by Ksh10.

3.4.2 Posho prices



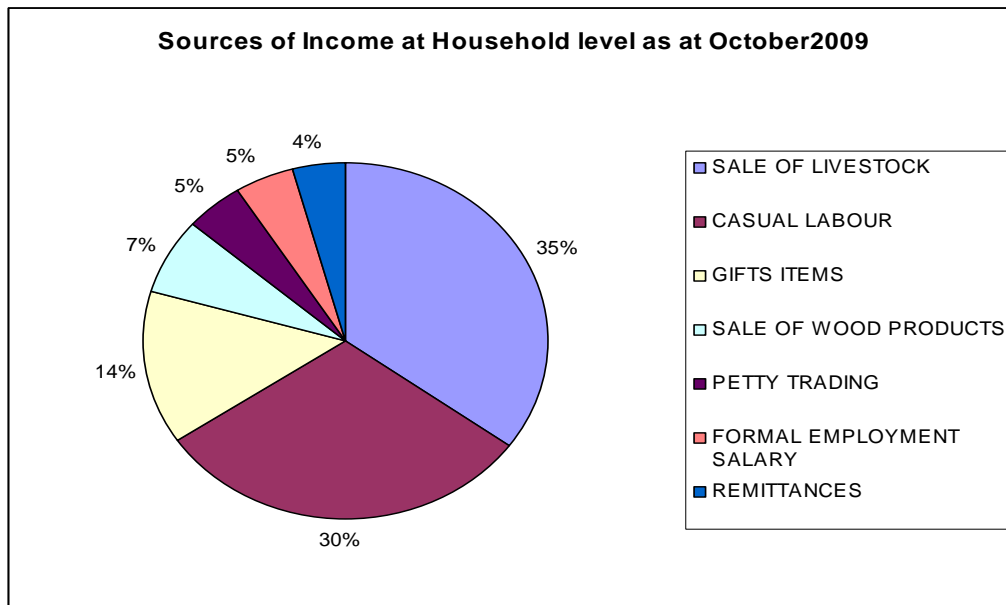
: No of households :(N) 417

- The observed average Posho price during the month was Ksh46 per kilo and compared to last month the average price decreased by Ksh2.
- Compared to long term mean, the average price was higher by Ksh11.

3.4.3 Other purchased food

- The other foods purchased by the communities were oil, rice and sugar.
- The observed price of sugar for the month of October was Ksh 90 (Sept-85), Rice Ksh 72 (Sept Ksh77) and oil price Ksh129 (Sept-Ksh133).

3.5 Income



Source: ALRMP sample site. Total Sample size (N) 417 HH

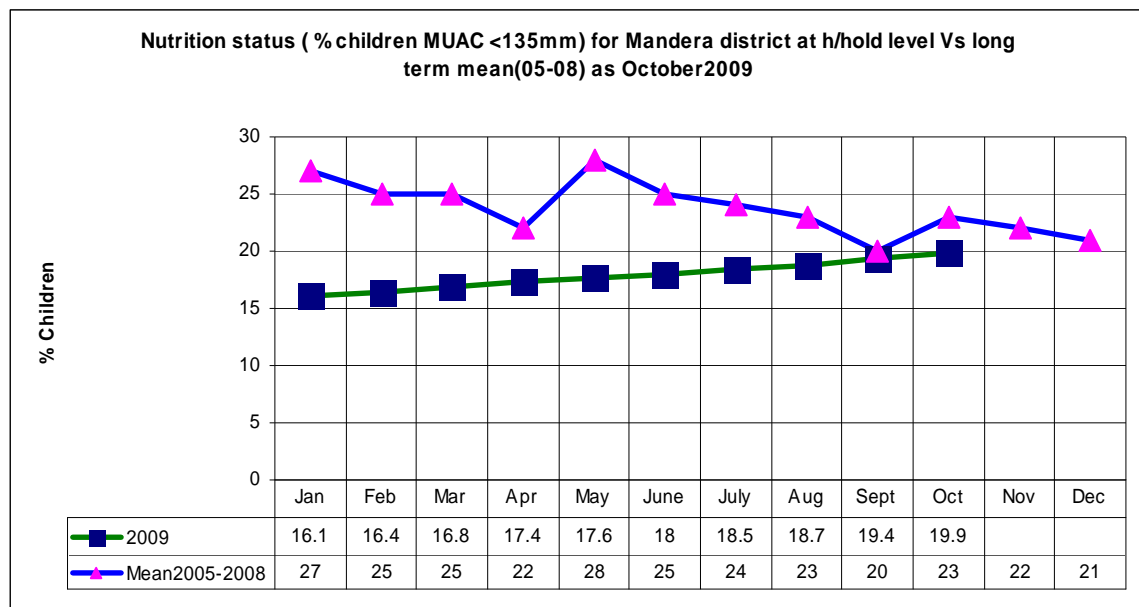
- The main sources of income for all livelihoods for the month under review were sale of livestock and casual labour. The sales rate of camel, cattle, sheep and goats were average.

3.5.1 Casual labour

- The average daily wage from sampled divisions was Ksh209 but from general observations it ranged between ksh170 to 200 per day. Compared to the preceding month, the average daily waged increased by Ksh18.
- The highest average income was noted in Agro-pastoral followed by pastoral all species and irrigated cropping zones.

4.0 Human welfare indicators (Utilisation of food)

4.1 Nutrition status



: Total No of Children: 1,518.

- The nutrition status of children below five years declined slightly during the month, with the percentage of those rated at risk rising by 0.5% compared to the previous month.
- However, compared to long term mean the rate was down by 3.1%.
- Libehia division reported the highest rate at 23.9% while Rhamu Dimtu division had the lowest at 14.9%.

4.2 Human health

There was no outbreak of human diseases reported during the month under review.

5.0 Current interventions

5.1 Non-food interventions

- ALRMP and MW&I carried out water trucking in water stress areas of Mandera West, North, Central, and East districts. This was the 1st and 2nd week of the month before the onset of the short rains.

5.2 Food aid

- Supplementary feedings by Action against Hunger, Save the Children (UK) and Islamic Relief.
- Therapeutic feeding centers (TFC) in Mandera district hospital by ACF
- Distribution of relief food by (EMOP) WFP & COCOP with total beneficiaries of 117,000 persons for the month of October, the food movement was curtailed by poor roads.

5.3 Coping strategies

The coping strategies were;

- Provision of relief food and supplementary feeding for the vulnerable groups of the communities in the divisions.
- Causal works act as secondary coping strategy for the Agro-pastorals & pastorals.
- Sharing of relief food with pastoral relatives.

6.0 Recommendations to DSG and KFSM

- Health education for communities on disinfection of water for purification, especially earth pans and underground water tanks in fear of outbreak of diarrhea and other water-borne diseases and provision of Chlorine -Action Ministry of Health.
- Provision of adequate drugs at rural dispensaries and health services anticipating outbreak of water borne diseases and provision of treated nets to poor households in the affected areas-Action Ministry of Health, Ministry of Water.
- Vaccination and mass treatment of CCPP disease in the entire district -Action – DVOs.
- Supplementary feeding to continue to reduce malnutrition- Action MOH,AAH, Islamic Relief and Save the Children (UK).
- Provision of certified/drought-tolerant seeds to farmers in the rain-fed and irrigated cropping zones to boost their crop production -Action Ministry of Agriculture & other actors.