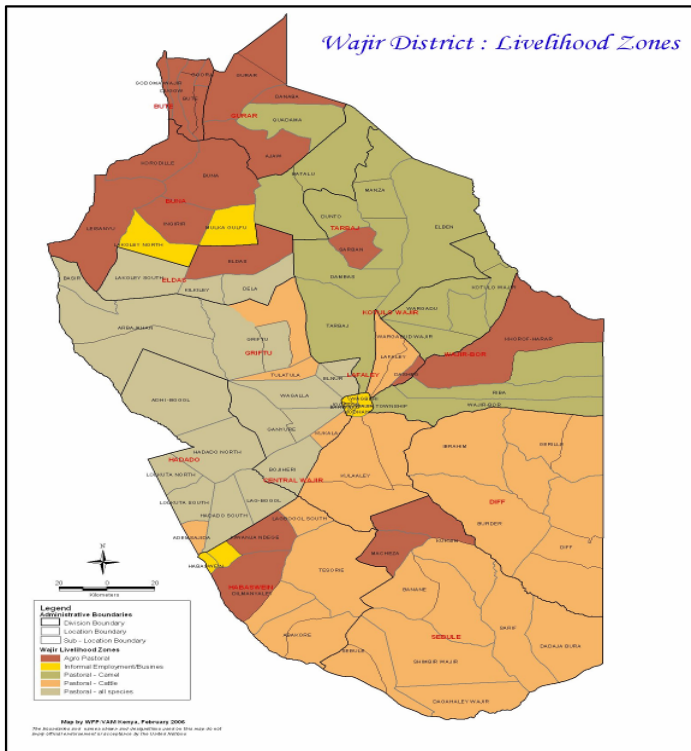




**OFFICE OF THE PRIME MINISTER  
MINISTRY OF STATE FOR THE DEVELOPMENT OF NORTHERN KENYA AND OTHER ARID LANDS  
ARID LANDS RESOURCE MANAGEMENT PROJECT II**

**DROUGHT MONITORING BULLETIN, OCTOBER 2009**

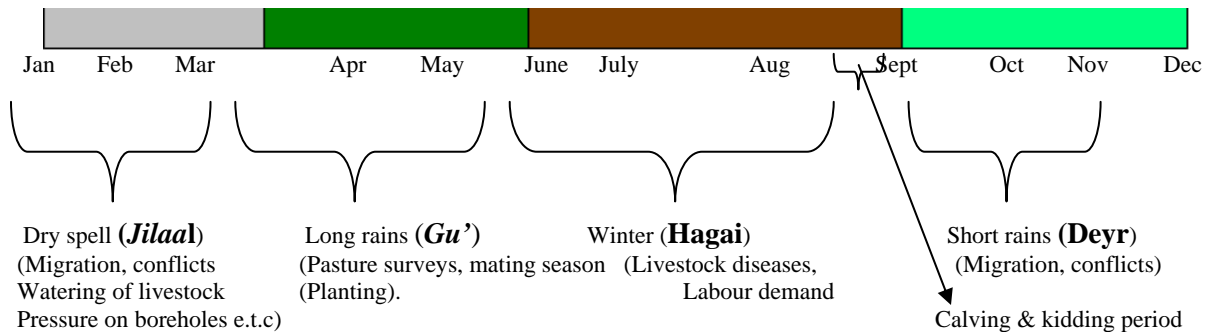
**Wajir District**



**Warning Stages**

Livelihood Zone	Warning Stage	Trend
<b>Pastoral – All Species</b>	Alert	Improving
<b>Pastoral – Cattle</b>	Alert	Improving
<b>Pastoral – Camel</b>	Normal	Improving
<b>Agro – Pastoral</b>	Normal	Improving
<b>Informal Employment/Business</b>	Alert	Improving

**Seasonal Calendar**



## **Situation overview**

- The district received average amounts of rainfall, with Bute recording 15mm, Gurar 34.4mm, K/Harar 16.7mm, Wajir 151.9mm and Hadado 57mm. A few cases of flooding were reported in swampy areas and lowlands, especially around Abaqkorey, Boji, Kutulo and Ajawa. Roads were rendered impassable in Arbajahan, Mansa, Bute, Diif and Daadajibula.
- Quality and quantity of pasture continued improving as browse regenerated but this was hindered by utilisation of immature browse by livestock.
- Pans, dams and ponds impounded water with a few dams, including Dilmanyaley, Dela and Wargadud, overflowing due to excess rains and poor workmanship. The trekking distances to water sources reduced with availability in all the grazing areas.
- Livestock body condition improved, though it might take time due to poor physical strength as the result of the drought. Camels and goats were slightly better compared to cattle and sheep. Deaths as a result of the rains were reported, especially in Kutuo, Arbajahan, Kilkile and Sarif while sporadic deaths were reported all over the district.
- Livestock prices increased in the local market and are expected to rise further. Camel prices increased from Ksh7,600 to 8,500, cattle from Ksh5,550 to 6,250 and goats from Ksh850 to 1200.
- The main causes of morbidity and mortality in the district remained malaria, upper respiratory tract infections, intestinal worms and malnutrition. Cases of malaria have been on the increase in health facilities as a result of stagnant water, poor drainage system and growth of bushes, resulting in breeding of mosquitoes.
- Availability of milk was still poor as livestock was at the recovery stage and production of milk low. However, the price of a 750ml bottle of milk reduced from Ksh100 the previous month to Ksh50.
- Commercial food prices have not increased in local markets despite poor roads that hindered transport and local shops have large stocks of food in anticipation of the El-nino rains.
- Cases of insecurity were reported along Wajir- Isiolo border, leading to attacks of convoys, especially in eastern part.
- The nutrition status of children below five years improved slightly during the month, with the percentage of those rated at risk of malnutrition falling to 33% from 34.6% the previous month. The improvement was attributed to the little available milk in households.
- The Emergency Operation Program (EMOP) has been upscaled with proposed ration of 75% in the district. Wajir district has an estimated 548,168 people and 303,000 are targeted under EMOP expected to continue in the next six months. However, poor roads hampered the distribution of the relief food.

## **Recommendations to DSG and KFSM**

- Restocking programme, especially cattle and shoats. (Action MoLD/OXFAM, VSF/ALRMP/KRCS).
- Provision of funds for mass vaccination of small stocks against PPR and CCPP in the entire district. (Livestock, Vsf, Oxfam, Alrmp)

- Strengthening of conflict resolution mechanisms, especially along Wajir – Marsabit-Isiolo border.(WPDA, OOP, UNDP)
- Nutritional interventions, especially in the worst affected areas such as Wajir bor, Kutulo, Hadado, Eldas and Buna through SFP/OTP as a recovery strategy to supplement milk.(SCUK, Mophs, Alrmp)
- Provision of Long Lasting Insecticides Treated Net.(LLITN) (MPHS, SCUK)
- Spraying of households with vectors/chemicals, especially in cesspools, stagnant water, bushes and debris to reduce mosquito menace.(MPHS,SCUK)
- Strengthening of disaster and emergency response teams to respond to disasters.(OOP,ALRMP)
- Provision of tractors along the hotspots on the highways to support trucks and other vehicles.(Roads)

### **Current interventions**

#### **Food aid**

- Support to orphanages through Islamic Madararas.
- Support to grannies by the Catholic missions.
- Nutritional supplementary program by Merlin in Wajir West/North and Save the Children UK in Wajir East and South.
- Hunger and Safety Net program (HSNP).
- EMOP by World Food Program/GOK through the lead Agency Aldef-Kenya and implementing agency Wasda.
- School feeding program supported by WFP.

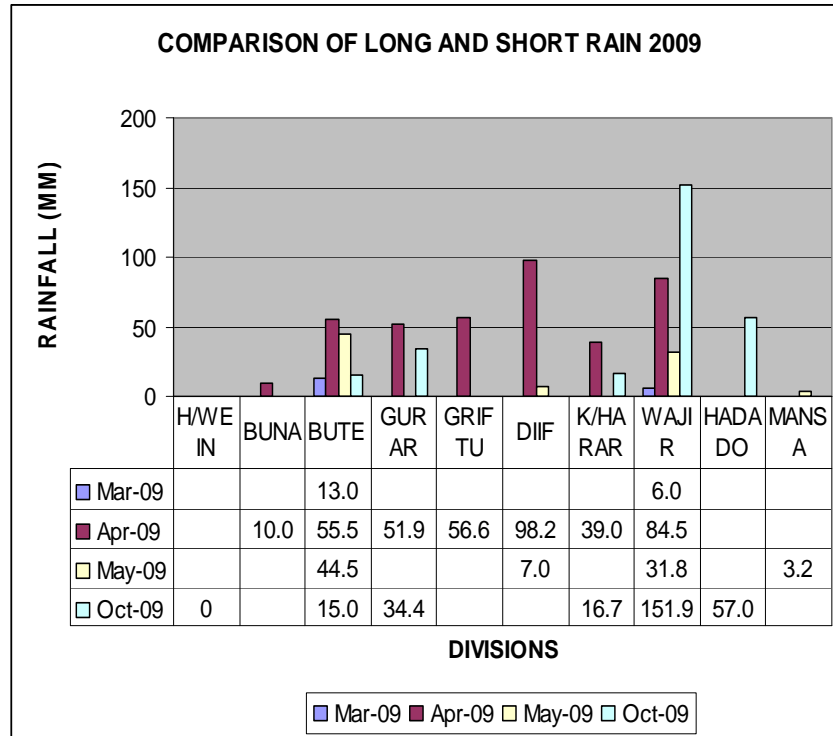
#### **Non – food aid**

- Health education/disaster emergency preparedness in the expected El-Nino.
- Provision of Agricultural seeds by the Ministry of Agriculture and Arid Land Resource Management Project.
- A forestation by the forest department.

## 1.0 Environmental indicators (Stability)

### 1.1 Rainfall

The graph below shows the comparison of amount of rainfall received in the long and short rain 2009.



The district received moderate rainfall was received though the intensity differed. Wajir North, South and East received the highest amount of rainfall compared to Wajir West, especially in the Basir and along Marsabit – Wajir border.

### 1.2 Condition of natural vegetation and pasture

The quality of pasture, browse and forage improved and continued to regenerate all over the district.

### 1.3 Water sources and availability

Water was available in streams, ponds, dams and pans. All water reservoirs contained water but unfortunately some burst their banks due to the intensity of the water.

#### 1.3.1 Household access to water

Water was available but quality was a cause of concern due to contamination with carcasses as the result of animals deaths.

#### 1.3.2 Livestock access

Livestock accessed water in all the grazing areas.

Livestock concentration was high where pasture had regenerated earlier, especially in Tarbaj, Wajir bor, Arbajahan, Abaqkorey areas.

#### **1.4. Emerging issues**

- Inaccessibility of roads, especially in the rural areas with most of rifts/bridges being washed away by floods.
- Increase in vectors and other pests.
- Increase in commercial food prices.

##### **1.4.1 insecurity/conflict/human displacement**

- Cases of insecurity were reported along the highway of Wajir – Isiolo border.
- There was no displacement of humans except livestock which are not grazed in swampy and marshy areas due to porous soil and mosquitoes.

##### **1.4.2 Migration**

- Limited movement of livestock was reported as the distribution of rainfall was uniform except in areas with pests, ticks and mosquitoes such as Dilmanyaley in Wajir south, Khorof Harar and Hadado.

##### **1.4.3 Implications on food security**

- Increased prices of commercial foods, poor road network, low purchasing power of the communities, poor livestock body condition compounded with poor livestock market will have a negative setback for the pastoral communities.
- Recurrent droughts in the successive years with no harvest of foods crops had a negative impact in food security.
- Lack of irrigation techniques and poor water harvesting will similarly have a negative setback.

### **2.0 Rural economy indicators (Food availability)**

#### **2.1 Livestock production**

Livestock production was still low following the stress of the drought.

##### **2.1.1 Livestock body condition**

- Livestock body conditions improved, though their bodies were wasted during the successive droughts and are expected to improve further.

##### **2.1.2 Livestock diseases**

- Diseases such as PPR, CCPP, infestation of ticks and mosquitoes were reported, especially in marshy and swampy areas like Dilmanyaley, Khorof Harar and Eldas.

##### **2.1.3 Milk production**

- The price of milk is expected to reduce and a bottle (750ml) sold at Ksh50 while the production is expected to improve in future.

#### **2.2 Crop production**

- Crops such as maize, millet and sorghum were planted while garden farms were also doing well, especially in Wajir central.

### 2.2.1 Timeliness and condition of crop production

- Crops were planted on time and a good harvest is expected if the rains continue with the same intensity.

### 2.2 Pests and diseases

Few pests were reported, especially in crops that had been planted earlier.

### 2.2.3 Harvests

Crops have just been planted but harvests from kitchen garden farming were ongoing, especially in small-scale farming in Wajir central.

### 2.2.4 Implications on food security

- Poor livestock body condition, increase in commercial food prices, poor livestock prices had a negative impact on the food security which will in turn have a negative set back.

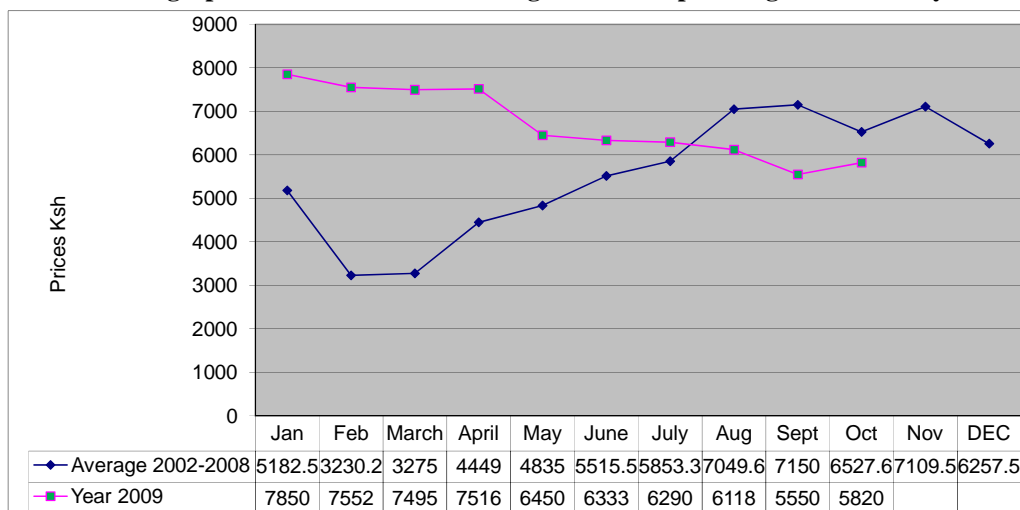
## 3.0 Access to food

### 3.1 Livestock marketing

Generally, the sale of livestock was poor due to their poor body condition and lack of terminal markets but few animals with good body conditions were sold at fair prices in the local market.

#### 3.1.1 Cattle prices

The graph below indicates cattle long term mean prices against current year



N= 420

The average cattle prices rose to Ksh5,820 from Ksh5,550 in September. The price increase was attributed to improved body condition.

### 3.1.2 Goats prices

The graph indicates Goat long term mean prices against current year 2009



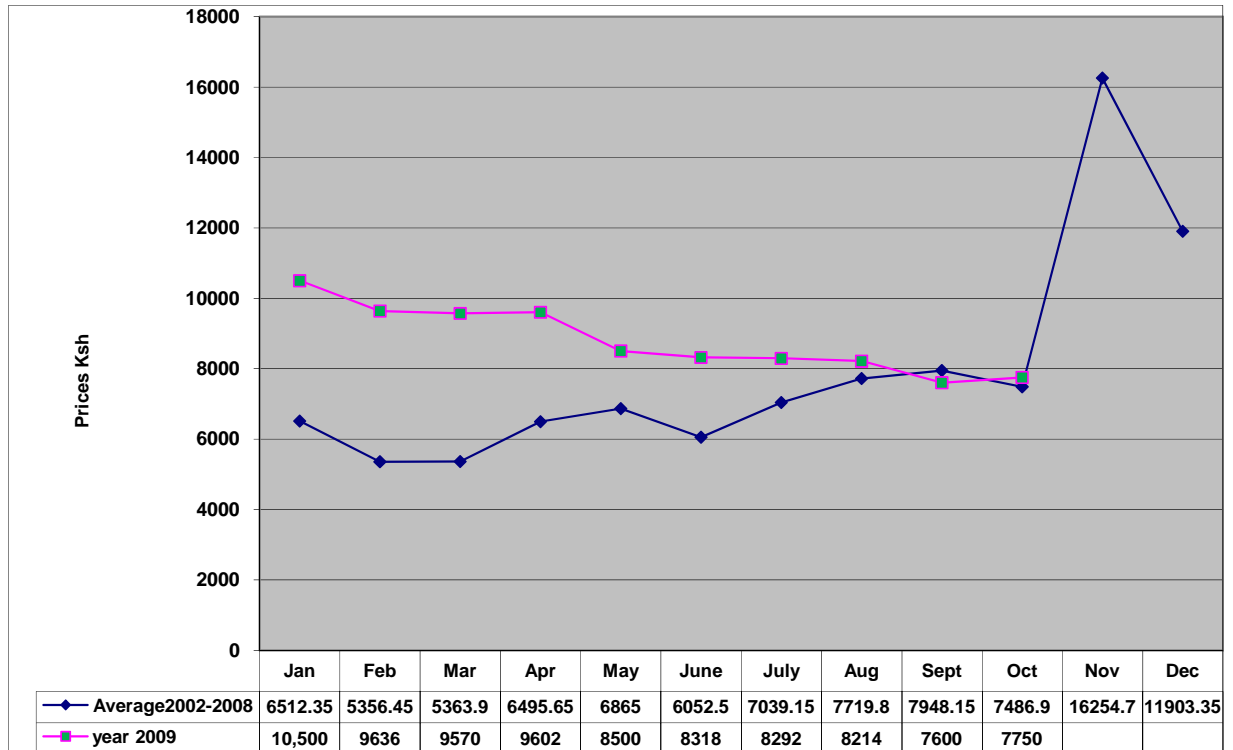
N=420

- The price of the goats at the household level improved compared to the previous month, with a slight improvement in body condition. Goats sold at an average of Ksh960 compared to Ksh850 the previous month.

### 3.1.3 Camel prices

The average camel price at the household level increased slightly compared to previous month from Ksh7,600 to 7750 in the month under review.

The graph below indicates Camel long term mean prices against current year 2009



N=420

### 3.2 Livestock sales

- Livestock demand and the sales rate were low compared to other seasons due to their poor body condition.
- The low sales and demand was as a result of poor body condition, prolonged drought with poor pastures/browse conditions during the last period.

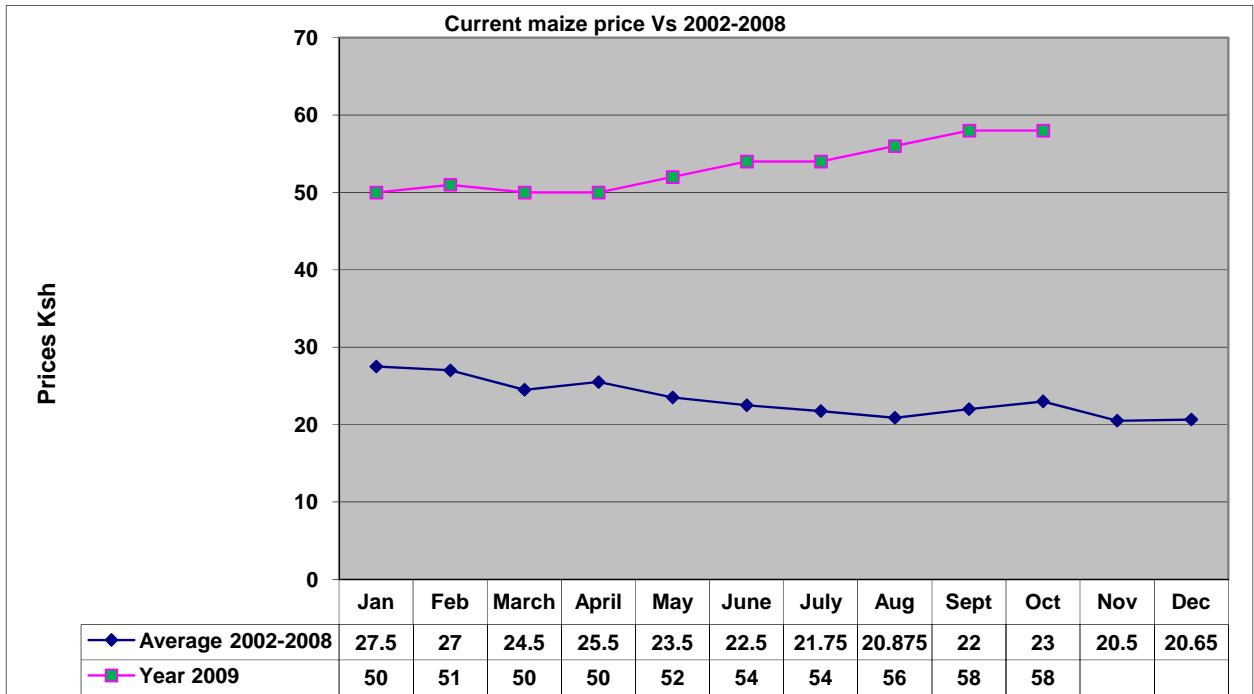
### 3.3 Milk consumption

Milk consumption was extremely low as the commodity was scarce with the little available used as alternative source of income to purchase other commercial foods.

### 3.4 Crop prices

#### 3.4.1 Maize prices

The graph below indicates maize long term mean prices against current year 2009.

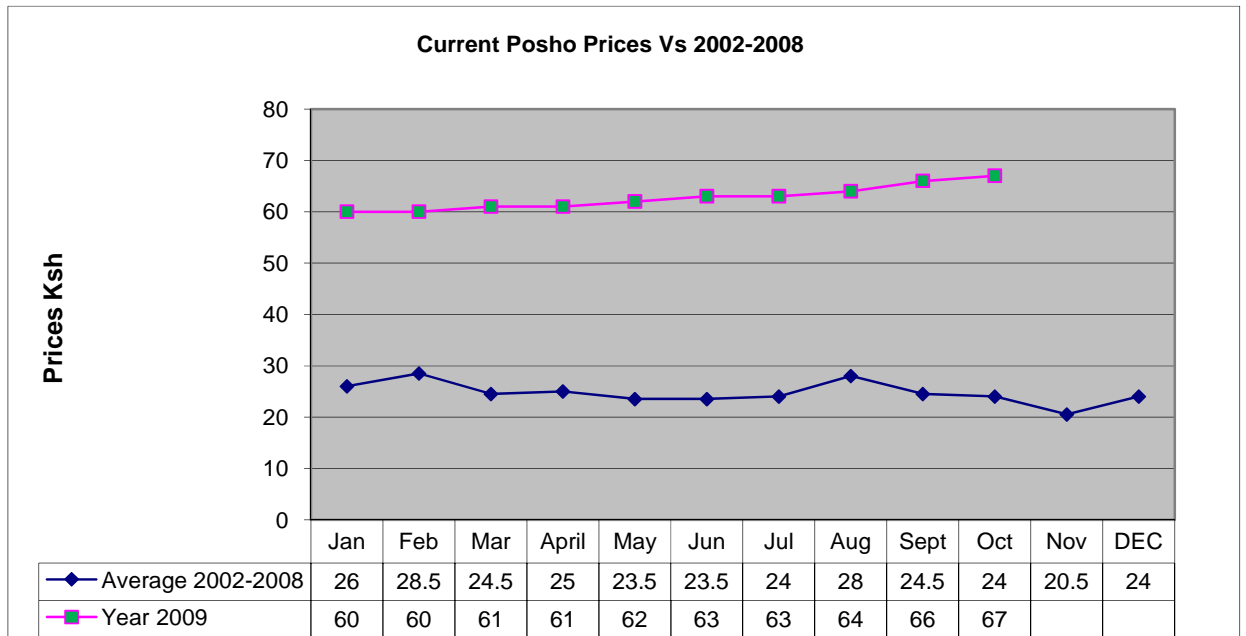


N=420

- The prices of maize remained the same as the previous. This could be due to the distribution of the commodity as relief food.
- The demand was also high compared to other cereals due to its availability and low price.

### 3.4.2 Posho (maize meal) prices

The graph below indicates the long mean price of Posho against the current year 2009.

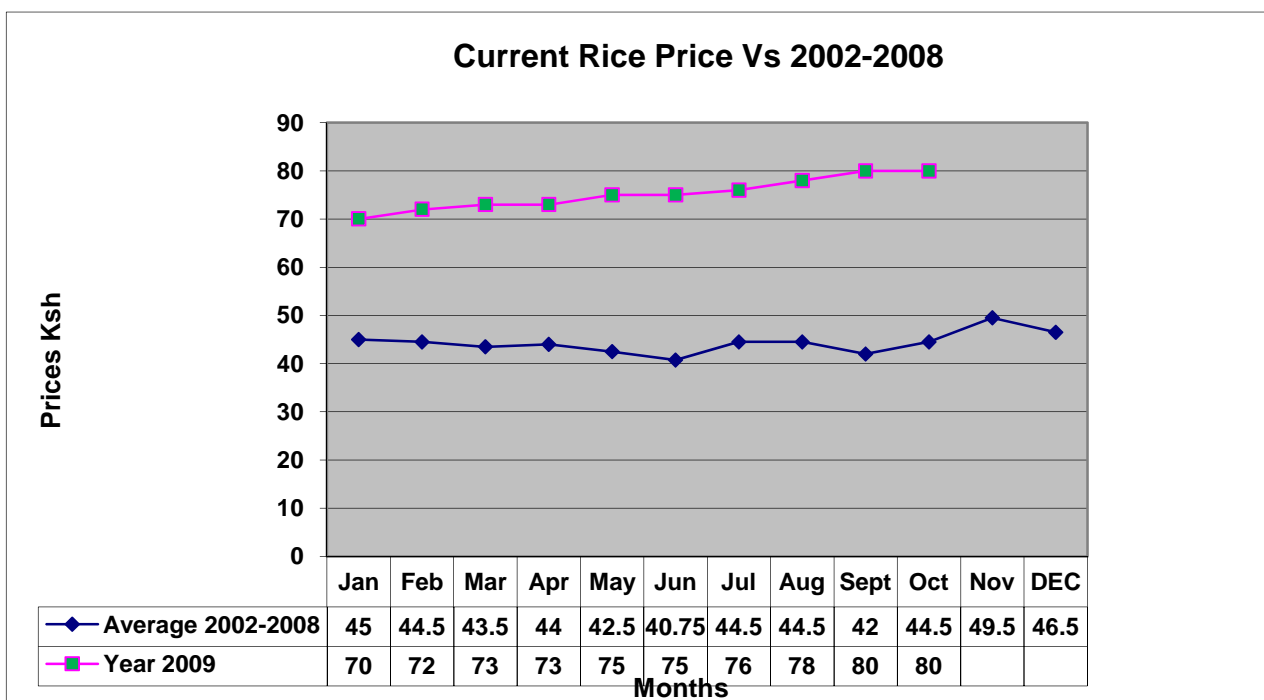


N=420

Posho prices increased slightly to Ksh67 per kilo compared to Ksh66 the previous month due to high transportation costs and increase in fuel for grinding.

### 3.4.3 Rice prices

The graph below indicates long term mean prices of rice against the current year 2009.



The price of rice remained the same compared to the previous month. Different varieties were sold in local markets but the average price was Ksh80 per kilo.

### 3.5 Income

#### 3.5.1 Crop income

- Kitchen farming, using small irrigation pumps, especially in Wajir central was an alternative source of income.
- Vegetables were also grown and sold in local markets as a source of alternative income.

#### 3.5.2 Livestock income

- The main source of income was sale of livestock but poor price, low demand and poor body condition all have a negative set back to the pastoralist community.

#### 3.5.2 Other income

- Selling of miraa (khat), quarrying and daily casual labour, especially planting, and other general wages.
- Fetching of firewood was another alternative source of income, especially in small business/informal livelihood zone.

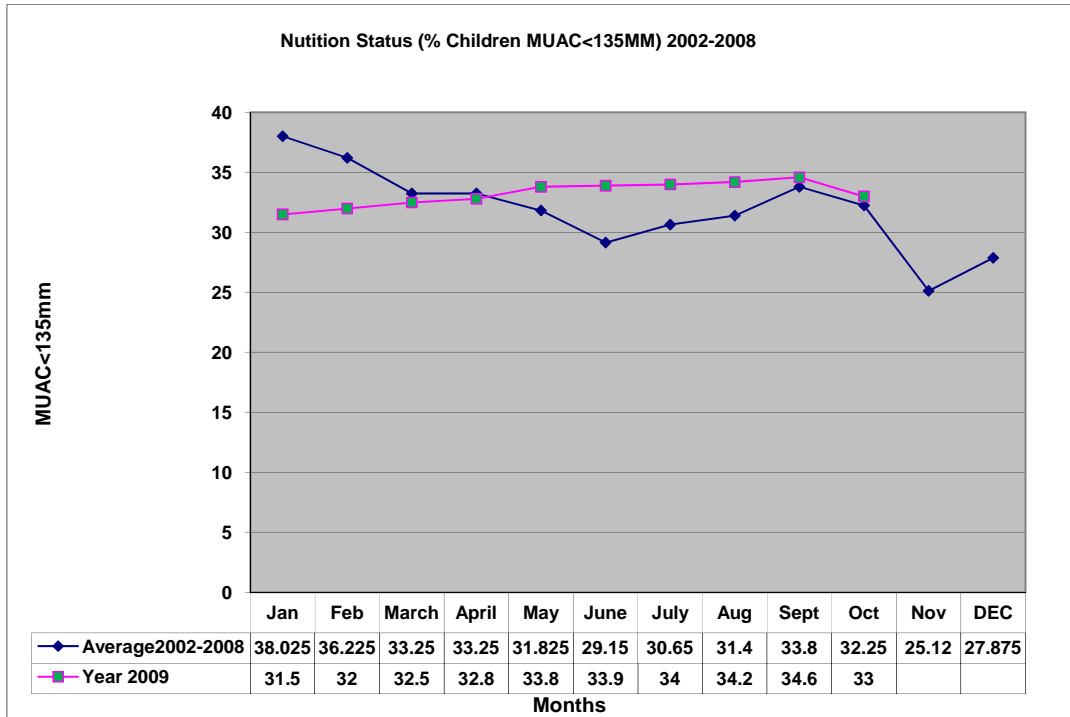
### 3.6 Implications on food security

- Poor livestock prices, low demand and poor body condition all had a negative set back to the pastoralist community.

### 4.0 Human welfare indicators (utilisation of food)

## 4.1 Nutrition status

The graph below indicates long term Muac <135mm against the current year 2009.



N= 420

- The nutrition status of children below five years improved slightly during the month, with the percentage of those rated at risk of malnutrition falling to 33% from 34.6% the previous month. The improvement was attributed to the little available milk in households.

## 4.2 Human health

The main causes of morbidity and mortality in the district remained malaria, upper respiratory tract infections, diarrhoeal diseases and malnutrition. However, upsurge of malaria cases was reported.

## 4.3 Flagged areas

Cases of kwashiorkor reported during the drought subsided, while Diif reported cases of schistosomiasis.

## 5.0 Current interventions

### 5.1 Non-food interventions

- Mobile VCT services supported by APHIA II.
- Water and sanitation by Oxfam GB.
- HSNP(Hunger and safety net program).
- Continuous health education by the ministry of public and medical services.
- Kazi kwa vijana.

## **5.2 Food aid**

- FFA-food for asset program by WFP through partner agency.
- Nutrition support in OTP/SFP by SCUK.
- EMOP relief food distribution by WFP through lead agency, ALDEF-K and implementing partners (WASDA).
- Basic relief support from OOP especially to vulnerable groups through KRCS.

## **5.3 Other coping strategies**

- Purchasing of food on credit.
- Reliance on remittances.
- Fetching of firewood and charcoal burning.
- Sale of gum and resins, mirra and quarry products such as white wash.
- School feeding program supported by WFP during the school holiday.

## **6.0 Recommendations to DSG and KFSM**

- Restocking programme, especially cattle and shoats. (Action MoLD/OXFAM, VSF/ALRMP/KRCS).
- Provision of funds for mass vaccination of small stocks against PPR and CCPP in the entire district.(Livestock,VSF, Oxfam, ALRMP)
- Strengthening of peace conflict mechanism especially along Wajir – Marsabit-Isiolo boarder.(WPDA, OoP, UNDP)
- Nutritional intervention, especially in the worst affected areas such as Wajir bor, Kutulo, Hadado, Eldas and Buna through SFP/OTP as a recovery strategy to supplement milk. (SCUK, MOPHS, ALRMP)
- Provision of Long Lasting Insecticides Treated Net. (LLITN) (Mphs, SCUK)
- Spraying of households with vectors/chemicals, especially in cesspools, stagnant water, bushes and debris to reduce mosquito menace. (MPHS,SCUK)
- Strengthening of disaster and emergency response team to respond to disasters. (OOP,ALRMP)
- Provision of tractors along the hot spots on the highways to support trucks and other vehicles. (Roads)