



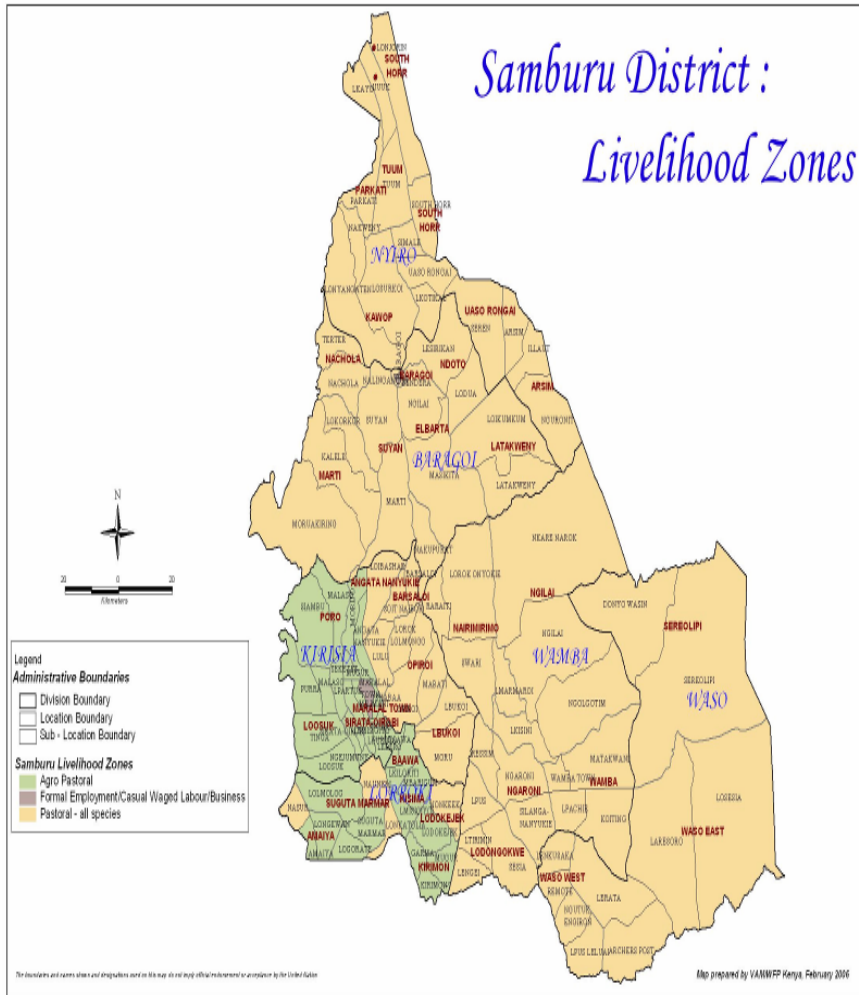
OFFICE OF THE PRIME MINISTER

**MINISTRY OF STATE FOR THE DEVELOPMENT OF NORTHERN KENYA AND OTHER ARID LANDS
ARID LANDS RESOURCE MANAGEMENT PROJECT II**

DROUGHT MONITORING BULLETIN, SEPTEMBER 2009

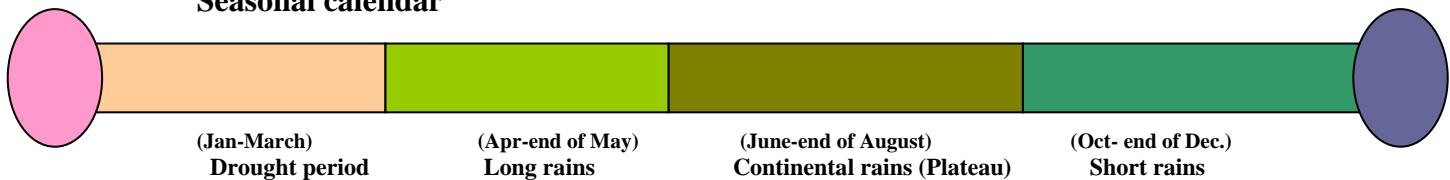
Samburu District

Warning Stages



| Livelihood Zone | Warning stage | Trend |
|----------------------|---------------|-----------|
| Agro Pastoral | Emergency | No change |
| | Emergency | No change |
| Pastoral-All species | Emergency | No change |
| | Emergency | No change |
| District | Emergency | No change |

Seasonal calendar



Situation overview

- On average the district received 1.2 mm of rainfall compared to 1.7 mm received in August. The amount was 95.1 per cent below the long-term mean average of 23.35 mm. Prevailing hot and dry weather conditions aggravated severity of drought impact to many households across the district.
- Water sources usually utilised during this season dried up due to enhanced evaporation rates, leading to increased distances to water points by households and livestock.
- Livestock body conditions generally ranged from fair to poor and prices remained substantially below the long term mean range.
- Milk availability remained scarce at the household level across the district.
- Malaria and upper respiratory tract infections continued to dominate the district human disease profile, but within manageable levels.
- Below normal livestock prices and hiked prices of essential food commodities eroded pastoralists' purchasing power and hence enhanced food insecurity at the household level.
- Insecurity continued to destabilise the western and Eastern borders of the district, constraining utilisation of forage resources and human settlement in the affected areas.
- The nutrition status of children below five years improved during the month, with the percentage of those considered at risk of malnutrition (based on MUAC <135mm measurements) decreasing to 31.7 from 37.1 in August.

Current interventions

- Supplementary feeding programme by the Ministry of Health, World Vision, Catholic Diocese, SAIDIA and International Medical Corps at 32 health facilities in all divisions targeting approximately 7,786 beneficiaries.
- District-wide general relief food distribution targeting approximately 40% of the population in the lowlands and 20% in the plateau.
- District-wide emergency livestock off take programme that targeted approximately 900 heads of cattle by GOK.
- Purchase and distribution of livestock feeds (1000 bales of Hay grass) by ALRMP II.
- Fuel subsidy for boreholes by ALRMP II (22,000 liters diesel) and CODES(14,000 liters diesel)
- Purchase of plastic water tanks and water trucking by Ministry of Water/Irrigation and CODES.
- District-wide measles vaccination campaign.

Recommendations to KFSSG and DSG

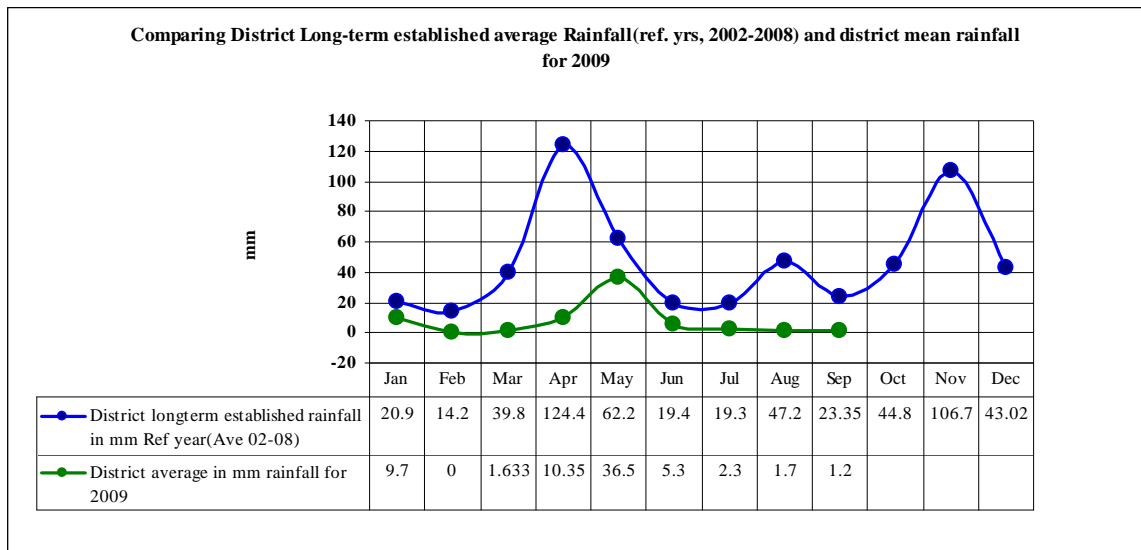
- General relief food distribution to target more beneficiaries (80% of the population) across the district to cushion them from the impacts of the currently experienced drought.
- KFSSG and other stakeholders to play a lead role in promoting conflict resolution

initiatives among warring communities through facilitation of district peace committees to reach warring communities for dialogue.

- Supplementary feeding programme to target groups at risk of malnutrition, especially children above five years.

1.0 Environmental indicators (Stability)

1.1 Rainfall



Source: District Agriculture/ALRMP II weather station

- Drought stress persisted and bit hard across the district. Hot and dry weather conditions experienced for the last six months aggravated the severity of drought impact on households.
- On average the rainfall amount received was 1.2 mm from last month's 1.7 mm. The amount was below the long-term established mean by 95.1 per cent.
- The long term established threshold normally received during this period of the year is 23.35 mm.

1.2 Condition of natural vegetation and pasture

- Forage resources, particularly pasture, diminished completely even at dry season grazing zones. Prevailing weather conditions coupled with livestock concentrations in these areas were factors behind the above trend.
- Insecurity remained a constraint in access and utilization forage resources in the western borders of the district.
- Forage resources were far below average compared to normal times during this period of the year.

1.3 Water sources

1.3.1 Use of water sources

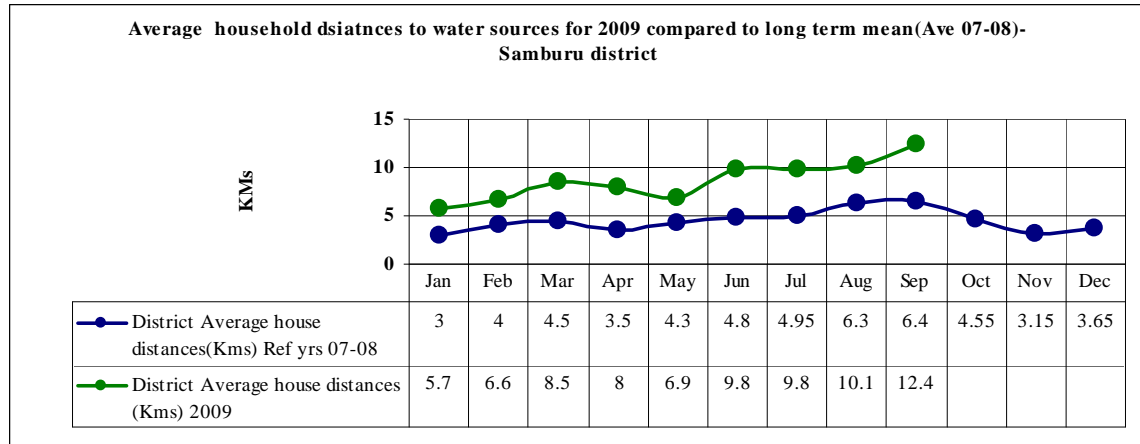
- The main sources of water for livestock and household during the course of this month remained the same as last month and included traditional river wells,

natural rivers, boreholes and pans/dams.

- Existing water sources dried up due to enhanced rates of evaporation, leading to increased distances to water points by households and livestock.
- Acute water shortage hit 8, 13 and 16 communities in Samburu North, Central and East respectively.

1.3.2 Distance to water sources

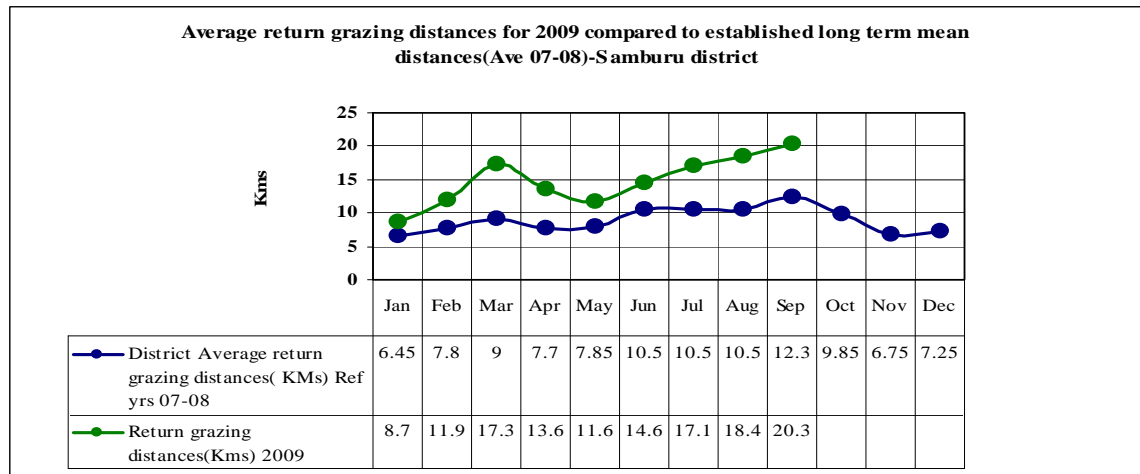
a) Household distances



Number of communities (N) =32

- Average distance to water sources increased to 12.4 Kms for households from last month's 10.1 Kms. The distance was above the long term average by 94.75 per cent .
- Drying up of main watering points due to enhanced evaporation rates was attributed to increased household distances. This implied that more time was spent in search of water by household members particularly women and children.

b) Distances to grazing areas



Number of communities (N) =32

- Average return grazing distance to main sources of water also increased to 20.3 Kms from last month's 18.4 Kms.
- Return grazing distance was above the long term mean by 65 per cent.
- Main watering points normally utilised by livestock this season dried up and forage resources scarce, hence livestock trek long distances in search of water and pasture.

1.4 Emerging issues

1.4.1 Insecurity/ conflict

- Tension amongst warring communities remained high in Samburu North district following the killing of three herders at Marti Location.
- In Samburu Central district, bandits from Baringo East district murdered 22 people at Kanampio village and an increased stock theft at night was also witnessed during the course of the reporting month.
- Three herders and an estimated 800 heads of cattle stolen at Losesia area of Samburu East district by bandits from the neighbouring Isiolo District.

1.4.2 Migration

a) Livestock migration

- Livestock from various regions within and without the district remained in dry season grazing zones of the upper parts of the plateau (Kirisia/Lorroki divisions), and western parts of Samburu North district (Baragoi, and Nyiro divisions).

b) Human migration/displacement

- Many families remained displaced in parts of Samburu North district and tension heightened amongst warring communities following killing of three herders at Marti area.
- Households in the western parts of the Agro pastoral livelihood zone also remained displaced and concentrated in cluster villages in Lolmolog, Angata Rongai, Logorate and Longewan sub-locations.

1.5 Implications on food security

- The extended precipitation deficiency amplified severity of drought effects and impacted gravely on household food security status.
- Insecurity continued to undermine efforts to attain food security in areas affected within the district.

2.0. Rural economy indicators

2.1 Livestock production

2.1.1 Livestock body conditions

- Cattle and sheep body conditions remained poor across the district. Goats' body conditions ranged from fair to poor.
- Cattle and sheep succumbed to starvation and massive deaths were reported across the district.

- Long trekking distances to watering points and grazing areas, susceptibility to diseases such as FMD and the poor quality/ diminished forage resources were factors that contributed to poor cattle and sheep body conditions and the massive deaths.
- Compared to a normal year livestock body conditions remained far below normal across the district.

2.1.2 Livestock diseases

- The major livestock diseases reported were ECF, and Anaplasmosis in cattle; Sheep pox, diarrhoea, and elmenthiasis in sheep; Goat pox, and CCPP in goats.
- FMD spread completely subsided and there were no new cases reported during the course of the reporting month.

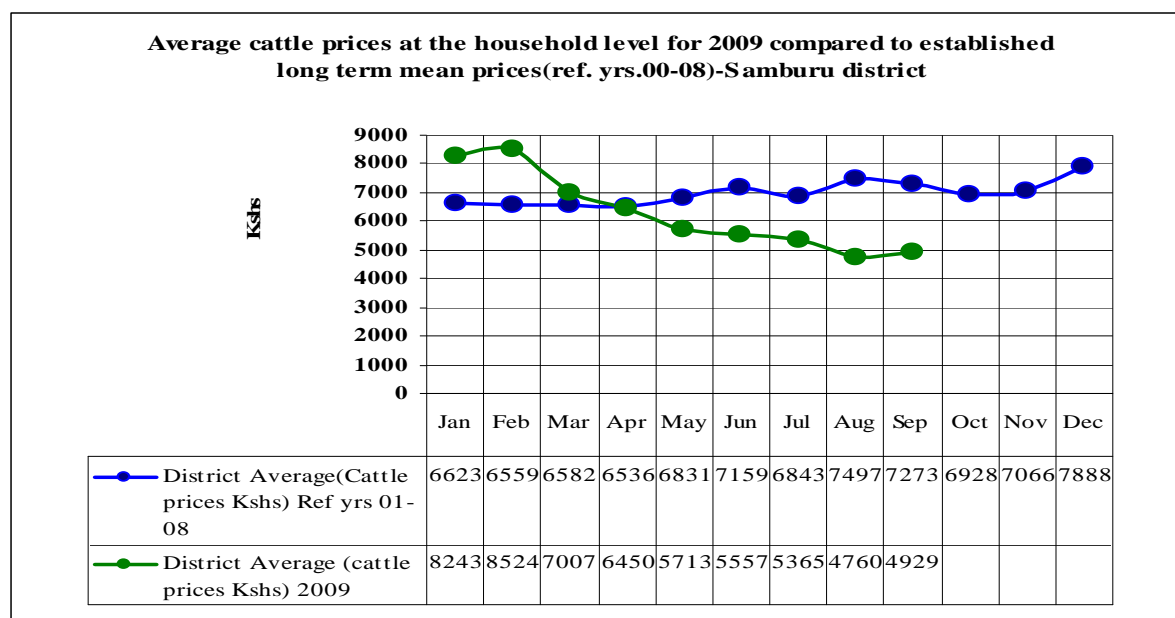
2.2 Implications on food security

- Poor livestock body condition was detrimental to the pastoralists' economy and impacted negatively on their food security.

3.0 Access to food

3.1 Livestock marketing

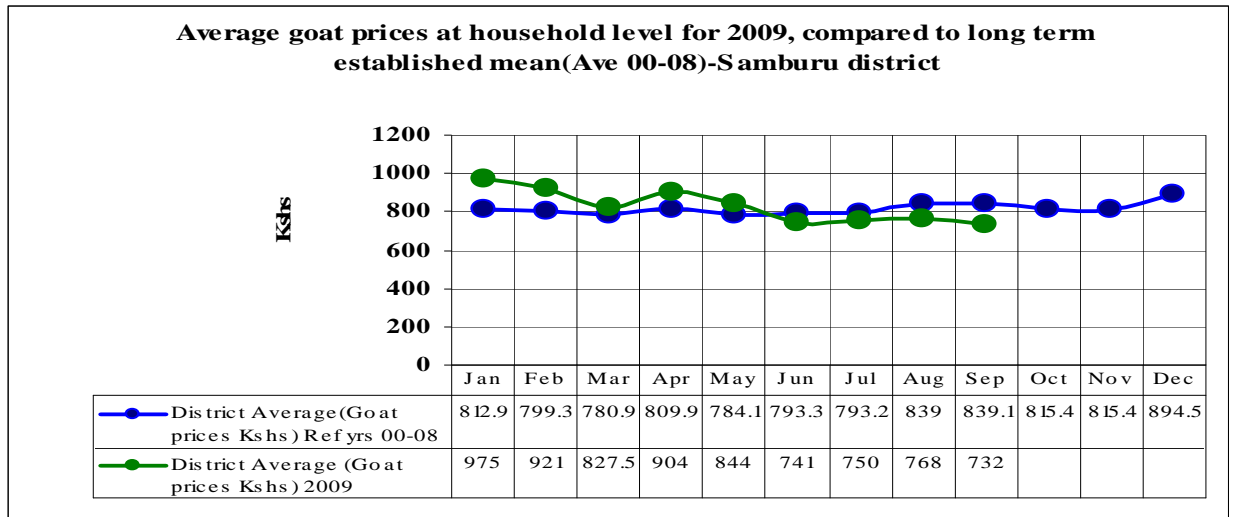
3.1.1 Cattle prices



Number of households (N) =380

- Average cattle prices rose to Ksh4, 929 from Ksh4, 760 in August.
- However, the price was below normal by 32.2 %.
- Below normal average cattle price was attributable to poor cattle body conditions and quarantine imposed by veterinary department to curb FMD spread.

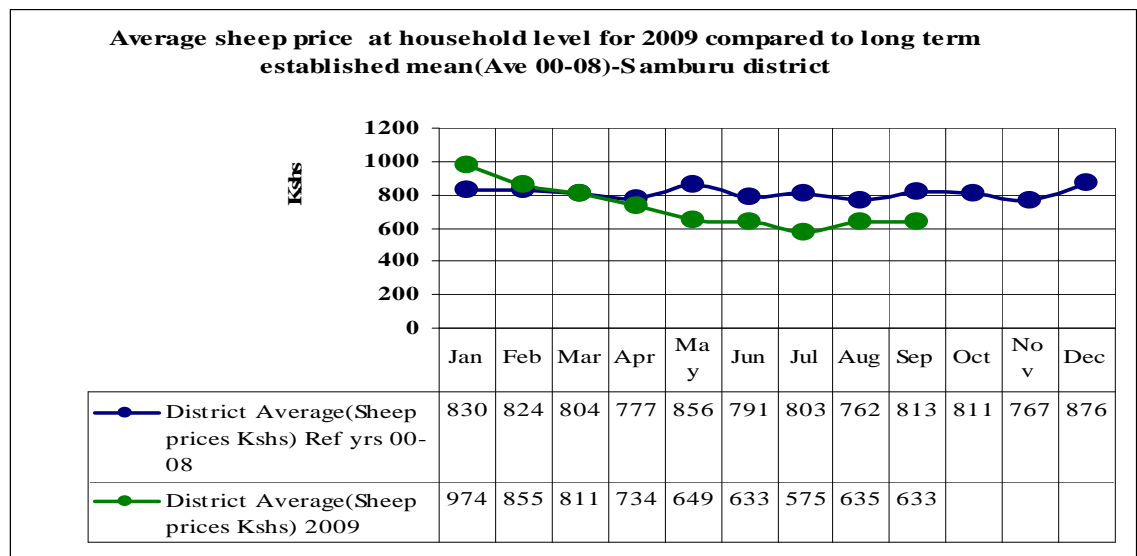
3.1.2 Goats prices



Number of households (N) =380

- Average goat prices slightly fell to Ksh732 from last month's Ksh768.
- The price remained below the long-term average by 12.8 per cent.
- Poor goat body condition was a factor behind the downward price trend.

3.1.3 Sheep prices



Number of households (N) =380

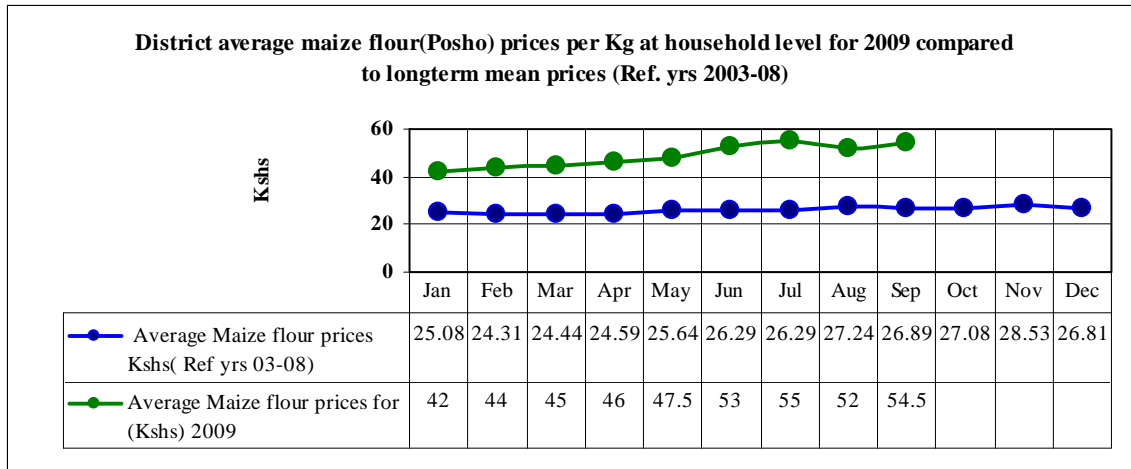
- Average sheep price dropped to Ksh633 from Ksh635 in August.
- However, the price was below the long term average by 22.1 per cent.
- Poor sheep body condition was a key factor that contributed to below normal price trend.

3.2 Milk consumption

- Milk availability at the household level remained scarce as drought stress bit hard across the district.
- This was attributable to poor livestock body conditions and record low livestock birth rates.

3.3 Food prices

3.3.1 Posh (maize flour)



Number of communities (N) =32

- Maize flour prices on average rose to Ksh54.50 per kilogram of locally milled maize from Ksh52 in August.
- Compared to the long term mean, posho prices were above normal by 94.1 per cent.
- The district remained an importer of maize and decreased supply in the local markets led to hiked price.
- Added transport costs also contributed to high posho prices in many lowland areas compared to the plateau.

3.4 Income

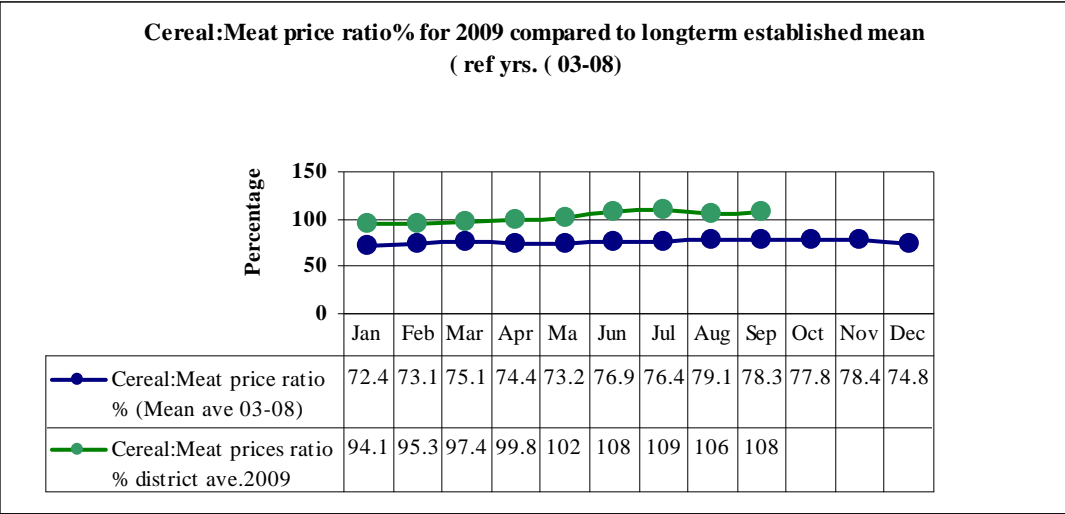
3.4.1 Livestock income

- Sale of livestock remained the major source of income for many households across all the livelihood zones.

3.4.2 Other income

- Casual labour, sale of charcoal, petty trade, sale of wood products, remittances and formal employment were the other income sources for many households within the district.

3.5 Cereal/ meat price ratio (%)



Number of households (N) = 380

- A pastoralist’s household required 0.108 kilogram of meat in exchange for a kilo of cereals.
- The exchange rate remained exorbitant as the established long-term mean average was 0.783 kg of meat against a kilogram of cereals.
- Pastoralists’ purchasing power soared to 108.3 per cent from 106.1 per cent in August and was below the long-term mean by 38.4 per cent.
- This was linked to far below normal livestock prices coupled with highly priced cereals, particularly maize which was the major pastoralist diet during this drought period.

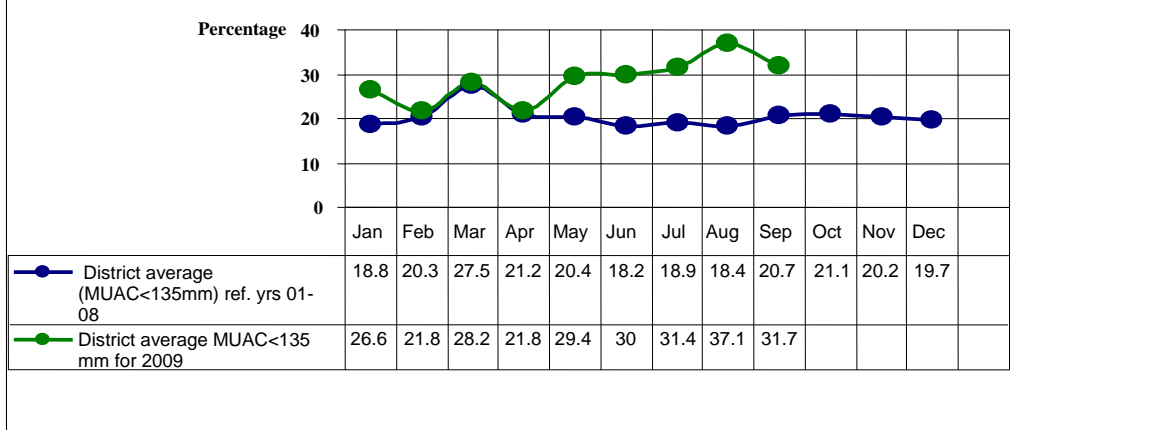
3.6 Implications on food security

- Below normal livestock prices compounded by highly priced essential household food commodities adversely eroded pastoralists’ purchasing power and impacted negatively on food security at the household level.

4.0 Human welfare indicators (utilisation of food)

4.1 Nutrition status

Nutrition status rates for children under 5yrs of age, Comparing District (MUAC<135mm) 2009, and District average (MUAC<135mm) Ref yrs(01-08)



Number of children (N) =11634 from 380 households

- The nutrition status of children below five years improved during the month, with the percentage of those considered at risk of malnutrition (based on monthly MUAC measurements) decreasing to 31.7 from 37.1 in August.
- Kawop, Nachola, West Gate, Tuum and South Horr sentinel sites portrayed alarming trends with the percentage of those at risk increasing to 96, 80, 59, 51.8, and 47.8 respectively.
- The above alarming trends could be attributed to unavailability of adequate and nutritionally balanced food at the households.

4.2 Human health

- Malaria, upper respiratory tract infections and diarrhoea were the major human ailments reported in various parts of the district but within manageable levels.
- The ailments were countered at the household level through medical assistance sought from public health centres/ dispensaries, private clinics and use of local herbs/ concoctions.

5.0 Current interventions

5.1 Non-food interventions

- District-wide livestock disease surveillance.
- Quarantine imposed to curb spread of FMD.
- District-wide emergency livestock off-take programme that targeted approximately 900 heads of cattle by GOK.
- Purchase and distribution of livestock feeds (1000 bales of Hay grass) by ALRMP II.
- Fuel subsidy for boreholes by ALRMP II (22,000 liters diesel) and CODES(14,000 liters diesel)

- Purchase of plastic water tanks and water trucking by Ministry of water/irrigation and CODES.
- District-wide measles vaccination campaign.

5.2 Food-aid

- Supplementary feeding programme by the Ministry of Health, World Vision, Catholic Diocese, SAIDIA and International Medical Corps at 32 health facilities in all divisions targeting approximately 7,786 beneficiaries.
- District-wide general relief food distribution targeting approximately 40% of the population in the lowlands and 20% in the plateau.

5.3 Other coping strategies

- The household coping mechanisms worsened compared to the previous months.
- Sentinel sites Kawop, Amayia and West Gate portrayed abnormal trends of 4.9, 4.5 and 4.1 respectively against a coping strategy index (0 to 10), depicting the devastating impacts of the current drought situation to many households.

6.0 Recommendations to DSG and KFSSM

- Re-targeting of beneficiaries for general relief food aid to capture more beneficiaries (approximately 80% of the district population) in dire need of food. This will cushion them from the impact of the prevailing drought and famine situation.(KFSSG, DSG, Ramati D.I.)
- Supplementary feeding programme to target other population groups at risk of Malnutrition above five years age bracket. (Action: MOH, SAIDIA, Catholic Diocese, WVK and IMC).
- KFSSG and other stakeholders to play a lead role in promoting conflict resolution initiatives among warring communities through facilitation of district peace committees. (Action: DSC, District Peace committees, Pastoral associations, KFSSG and Communities).