



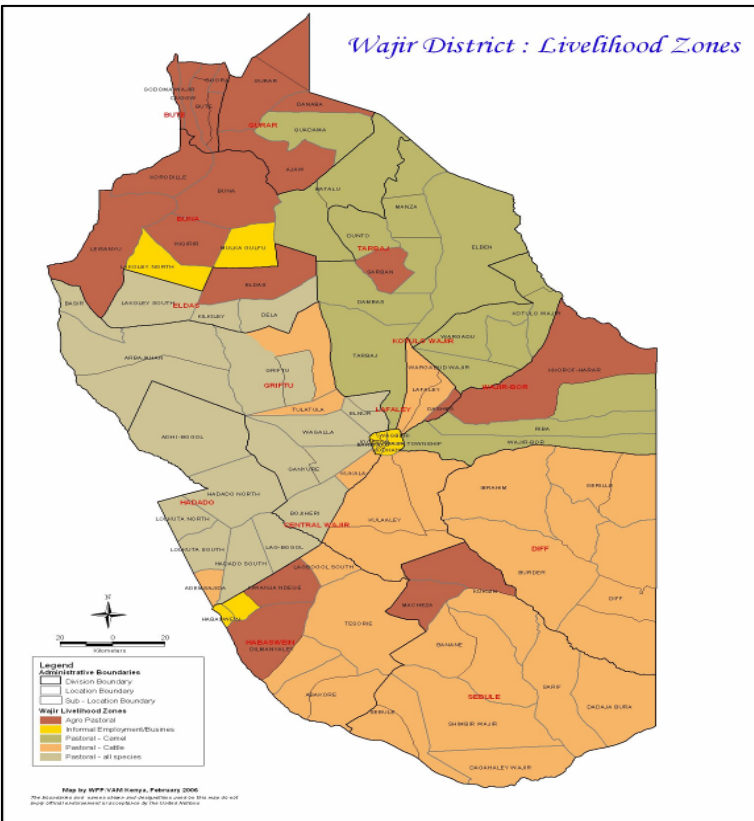
OFFICE OF THE PRIME MINISTER

**MINISTRY OF STATE FOR THE DEVELOPMENT OF NORTHERN KENYA AND OTHER ARID LANDS
ARID LANDS RESOURCE MANAGEMENT PROJECT II**

DROUGHT MONITORING BULLETIN, SEPTEMBER 2009

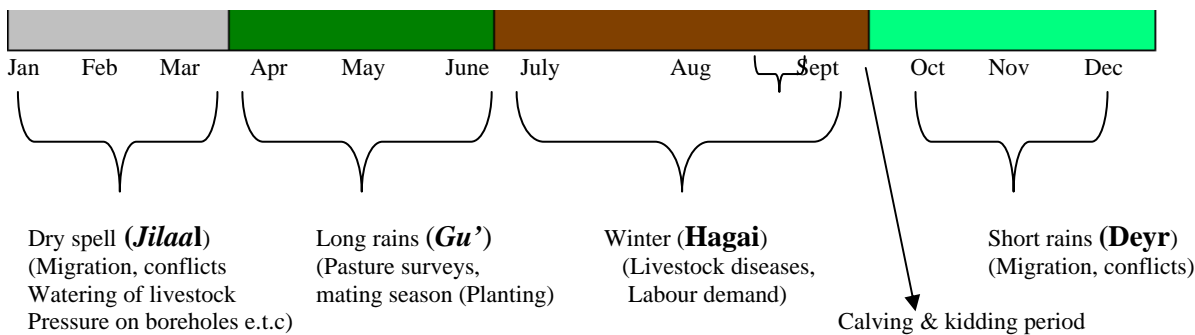
Wajir District

Warning Stages



Livelihood Zone	Warning Stage	Trend
Pastoral – All Species	Alarm	Worsening
Pastoral – Cattle	Alarm	Worsening
Pastoral – Camel	Alarm	Worsening
Agro – Pastoral	Alarm	Worsening
Informal Employment/Business	Alarm	Worsening

Seasonal Calendar



Situation overview

- No rainfall was received in the district and the dry season progressed during the month under review.
- Pasture condition deteriorated and got depleted due to excessive grazing, especially around permanent water source such as Hadado, Salema/Diif, lekole, Gerille and Wel-ade area. The grazing distance was over 100km from water sources.
- Availability of water declined and water trucking had to be done for livestock in Baragothey, Wara, Wermarer, Ona -Salat, Athi qabraw, Horote, Lekole, Abaqmathobe, Injirka, Salat dam and duke gala in Wajir west, Jubder, Kubedube, Kabole and Lekole north in Wajir North, Ibrahim ure, Hubsoi, Kursi and Lakboqol in Wajir south, Wajir bor, Wel-ade, Konton and Hadado got in Wajir east. Areas with settlements that were under water trucking included; Elyunis, Majabow, Wajir- Bor, Ogorale, Gunana, Haragal, Sitawario, Belatul Amin and Burmayo in Wajir East, Madahbaqay, Handaki, Qanjara, Qudama, Lekole north, Ingirir, Milsided, Hote, Lesayu in Wajir North Basir, Lolkuta North, Hadado, Basir, Anole, Juqale, Boa, Adan- Awale, Bojiheri, Barmish in Wajir West, Shimbirbul, Kutulo, Berjini and Hadado.
- Livestock body condition deteriorated, especially for cattle, sheep and goats, with livestock deaths estimated at 10-15% in shoats, cattle, 18%-20%. Some of the cattle were emaciated and too weak to support themselves. The mortality rate was due to the drought with few livestock diseases reported like PPR (Gesdor), Lumpy skin and ticks infestation. Most of the livestock was concentrated in Hadado, Gerille/Wel-ade, Salemaa, Diif, Lekole and Qudama.
- Livestock prices continued to decline in the local market due to the poor body condition, prolonged drought and loss of purchasing power by the community. Prices of camels reduced to Ksh7,600 from Ksh 8,250 in August, cattle from Ksh6,290 to Ksh5,550 and goats from Ksh1,050 to Ksh850.
- The main causes of morbidity and mortality in the district remained malaria, upper respiratory tract infections, intestinal worms, malnutrition and cases of diarrheal and Kalazaar especially in Wajir west and south.
- Milk availability declined and prices at the local market increased to an average of Ksh90-100 per 750ml bottle. Few households bought powdered milk from shops in Wajir.
- Food prices continued to escalate, especially maize, sugar and rice, which are essential commodities. Prices of commercial foods increased in the local markets, especially sugar which traded at over Ksh100 per kilo per kg and maize at Ksh58.
- No cases of insecurity were reported during the month under review except animals rustling along Wajir – Marsabit border.
- The nutrition status of children below five years (based on MUAC < 135mm measurement) declined during the month, with the percentage of those rated at risk of malnutrition rising slightly to 34.6% from 34.2% in August.
- The Emergency Operation Program (EMOP) was up scaled with proposed ration of 75% districtwide. Central 40%, Habaswein 60%, Buna 50%, Tarbaj 50%, Wajir bor 70%, Kotulo 70%, Diif 50%, Gurar 60%, Griftu 60%, Bute 50%, Eldas 50%, Hadado 70% and Sabuli 60%. Wajir District has an estimated population of 548,168 and 303,000 are targeted under EMOP expected to continue for the next six months.
- The district was still at alarm stage and on a worsening trend, with all indicators in deteriorating.

Recommendations to DSG and KFSM

- Purchase of equipment for emergency boreholes with gen-set and pump, draw pipes, borehole cables and control valve. (Action: Alrmp, Mow(water), Oxfam)

- Provision of standby gen-set, submersible pumps, fast moving spares and fuel subsidy for emergency drought mitigation measures. (Action: Alrmp, Oxfam, Aldef and Unicef)
- Purchase of bladder tanks and plastic tanks.
- Emergency water drilling of contingency boreholes in areas with shortages, especially Shimbir bul, Matho, Qudama and Gunana.
- Ensure all boreholes are operational at optimum level including repair of the existing ones and ensuring that they are functional.
- Purchase of tools for borehole maintenance team and repair of water bowsers.
- Continuation of de-stocking programme (livestock off-take), especially cattle and shoats.(Action MoLD/OXFAM, VSF/Alrmp/KRCS).
- Provision of relief hay and livestock concentrate.
- Allocate emergency funds for mass vaccination of small stock against PPR and CCPP in the entire district.
- Strengthening of peace conflict mechanism especially along Wajir – Marsabit boarder and bore holes.
- Increase food aid targets to 75% of the population considering the poor purchasing power of the pastoralists.
- Provision of contingency fund for drought mitigation due to the failure of the long rains. (Action : ALRMP/OXFAM)
- Nutritional intervention especially in the worst affected areas like Wajir bor, Kutulo, Hadado, Eldas and Buna through SFP/OTP.

Current interventions

Food aid

- Nutritional supplementary program by Merlin in Wajir west/North and Save the Children UK in Wajir East and South.
- Hunger and Safety Net program (HSNP).
- EMOP by World Food Program/GOK through the lead Agency Aldef-Kenya and implementing agency Wasda.
- School feeding program supported by WFP is on-going.
- Support to orphanage through Islamic Madarasas.

Non – food interventions

- Emergency water trucking to centers and fall back areas with pasture by Oxfam, Almp, CDF and Water.
- Support to emergency b/hole repairs, replacement of submersible pumps and repair of engines and replacement of draw pipes and fuel subsidy by (ALRMP.)
- Health education/disaster emergency preparedness for the expected El-Nino.

1.0 Environmental indicators (stability)

1.1 Rainfall

No rainfall was received and the dry season progressed in the month under review.

1.2 Condition of natural vegetation and pasture

The quantity and quality of pasture and vegetation cover deteriorated as the season progressed.

1.3 Water source and availability

- Availability of water declined and water trucking had to be done in most places, which was too expensive and unsustainable. Stakeholders battled to save lives of both humans and livestock.
- The number of areas/settlements/pastoralist being water trucked increased to 25 centres in Wajir west, 12 in Wajir east, 15 in Wajir south and all centres in Wajir north except Malkagufu, Buna and Gurar. Some of these areas include: Elyunis, Majabow, Wajir-bor, Haragal, Sitawario, Belatul Amin and Burmayo in Wajir East, Wara, Basir, Lolkuta North, Hadado, Anole, Jugale, Boa, Adan-awale, Bojiheri, Barmish in Wajir West, Shimbirbul, Hubsoy, Madahbaqay, Handaki, Qanjara and Ibrahim-urey in Wajir South, Qudama, lekole north, Ingirir, Milsided, Hote Lesayu in Wajir North and Gunana.
- The trekking distance to the main water sources was over 100 kms.

1.3.1 Household access to water

- Accessibility of water at household level was a major concern since jericans (water containers) were loaded in vehicles at the same price as passengers. A 20 litre jericans cost between Ksh30-40 and the trekking time increased to 18-20 hours. Convoys of donkey carts ferrying water were noted, especially between Arbajahan, Matho, Boji and weak animals were watered using donkey carts and water ferried by women.
- Wildlife, especially giraffes, roamed along the highway due to lack of water and human/wildlife conflicts were reported.

1.3.2 Livestock access to water

- Livestock accessed water at an average distance of 60km-70km from the grazing areas.
- Livestock was also concentrated in areas with high yielding boreholes.

1.4 Emerging issues

- Livestock being fed on boxes/empty cartons as alternative feeds, hence increase to house hold expenditure.
- Increase in malnutrition disorders, especially in children under five years.
- Conflicts as a result of water and pastures with frequent borehole break down.

1.4.1 insecurity/conflict/Human displacement

- Increase in commercial food prices such as maize, sugar and wheat flour.
- Security situation was calm and there were no reported cases except few individual conflicts over water and pasture.

- Cases of kwashiorkor and marasmus were reported in major health facilities including Wajir District hospital, Khorof Harar and Griftu.

1.4.2 Migration

- Most of the livestock was concentrated in areas of high yielding boreholes, where pastures was accessed at 100 km. These include Hadado, Gerille/Wel-ade, Salemaa, Diif, Lekole and Qudama. However, the little pasture was getting depleted.

1.4.3 Implications on food security

- The untargeted beneficiaries of EMOP, failure of crops in all the divisions, increased prices of commercial food such as sugar and the poor prices of livestock will affect the purchasing power of the pastoralists, hence food insecurity.
- Lack of irrigation techniques with little manpower also had a negative impact on food security.

2.0 Rural economy indicators (Food availability)

2.1 Livestock production

Little production of livestock was reported due to drought-related stress, with poor body conditions.

2.1.1 Livestock body condition

- Livestock body conditions, especially cattle, sheep and goats deteriorated due to inadequate browse, pasture and the long trekking distance for water and pasture. In some areas cattle were too weak to stand to graze are now feed at Household level with cartons.
- In some cases household expenses increased as a result of buying/purchasing alternative feeds for the weak animals.
- Prices of waste paper, cartons and food remains were in high demand since weak animals were given as feeds.

2.1.2 Livestock diseases

- Diseases such as PPR and CCPP were reported, especially at Eldas, while suspected cases of Haemorrhagic septicemia were reported in Diif, Eldas and Wajir-bor.
- Worms and lack of nutrients in animals were reported all over the district.

2.1.3 Milk production

- Milk prices increased and the availability of the commodity reduced, especially in areas that were affected by migration.
- Some pastoralists depended on powdered milk for alternative source of milk.

2.2 Crop production

- Only garden farming through small-scale irrigation was ongoing especially in Wajir central, Tarbaj, Griftu, Eldas and few pockets of Habaswein.

2.2.1 Timeliness and condition of crop production..

- Crops grown using small irrigation schemes in Wajir central are also source of alternative vegetable.

2.2 Pests and diseases

No diseases and pests were reported during the month under review.

2.2.3 Harvests

- No harvest from rain fed crops but little harvest is from kitchen Garden farming especially in Wajir central.

2.2.4 Implications on food security

- Poor livestock body condition, increase in commercial food prices, Poor livestock prices has a negative impact on the food security which will in turn have a negative set back.

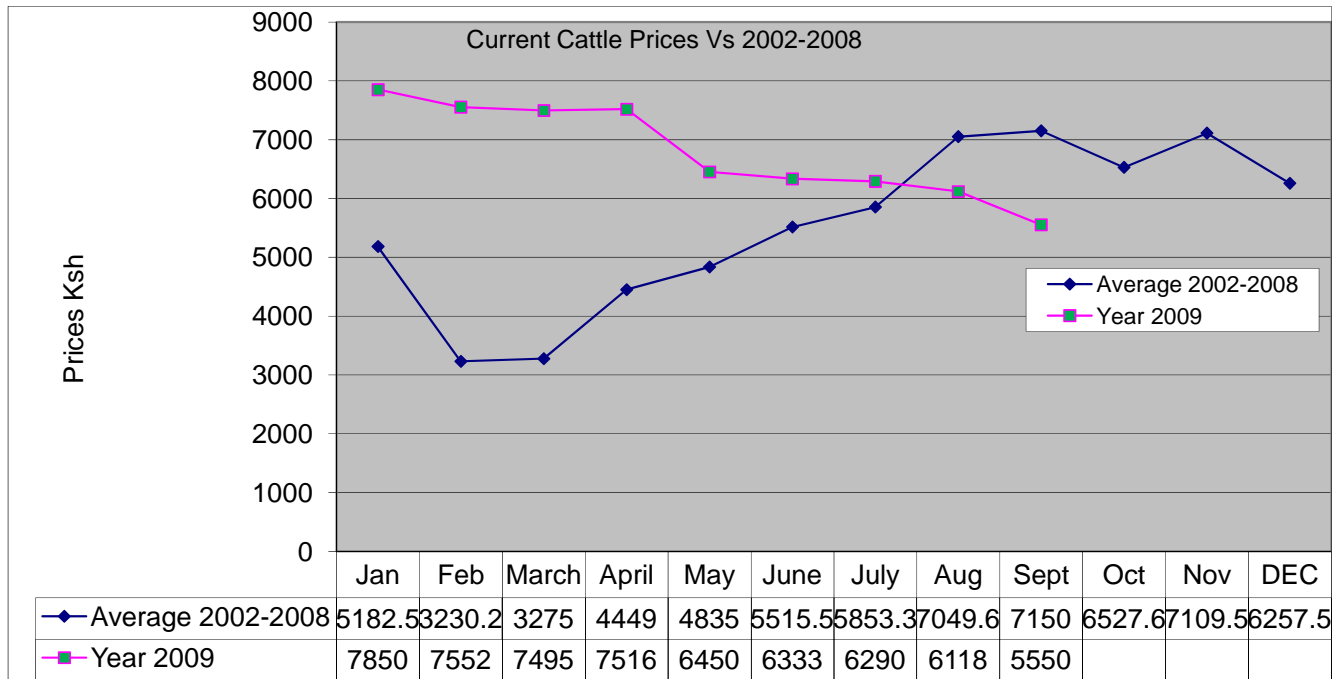
3.0 Access to food

3.1 Livestock marketing and sales

Generally the sale of livestock was poor due to their poor body condition and lack of terminal markets.

3.1.1 Cattle prices

The graph below indicates cattle long term mean prices against current year



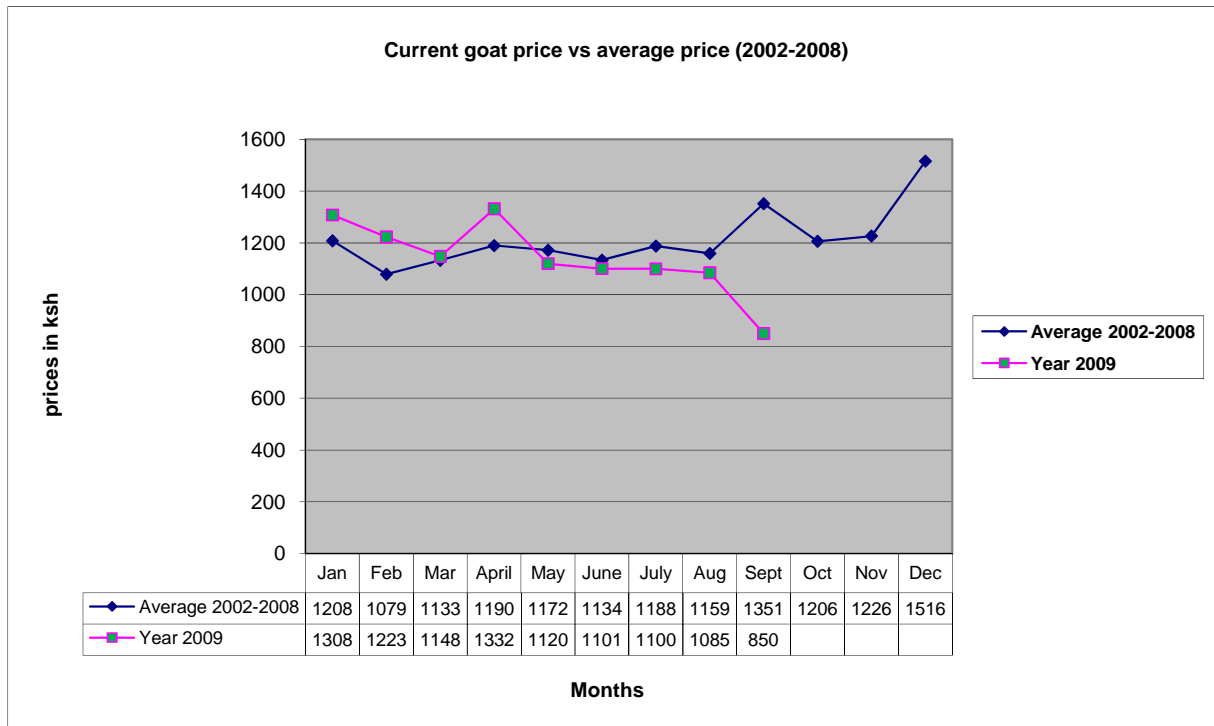
N= 420

- The prices of cattle reduced at the local markets compared to the previous month. The price reduction was as a result of poor body condition and low purchasing power.
- The average price reduced from Ksh6,118 in August to Ksh5,550.

3.1.2 Goat prices

- Similarly the price for Goats have reduced as compared to the previous month from Ksh1,085 to Ksh850.
- However, the meats of the Goats slaughtered at the butcheries are too lean due to poor dietary contents.

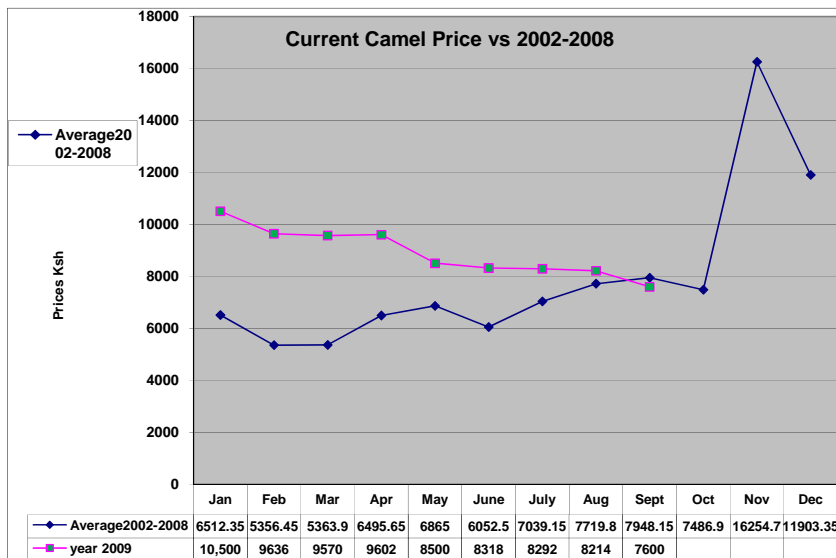
The graph indicates Goat long term mean prices against current year 2009.



N=420

3.3 Camel price

The graph below indicates Camel long term mean prices against current year 2009.



N=420

- The average camel price at the house hold level continues to decline, the current prices for camel is at Ksh 7,600 as compared to the previous month of Ksh8,214.

3.2 Livestock sales

- Livestock demand and the sales rate were low compared to other season.
- The low sales and demand was as the result of poor body condition, prolonged drought with poor pastures/browse conditions.
- Outbreak of diseases eroded the purchasing power of the pastoralists communities.

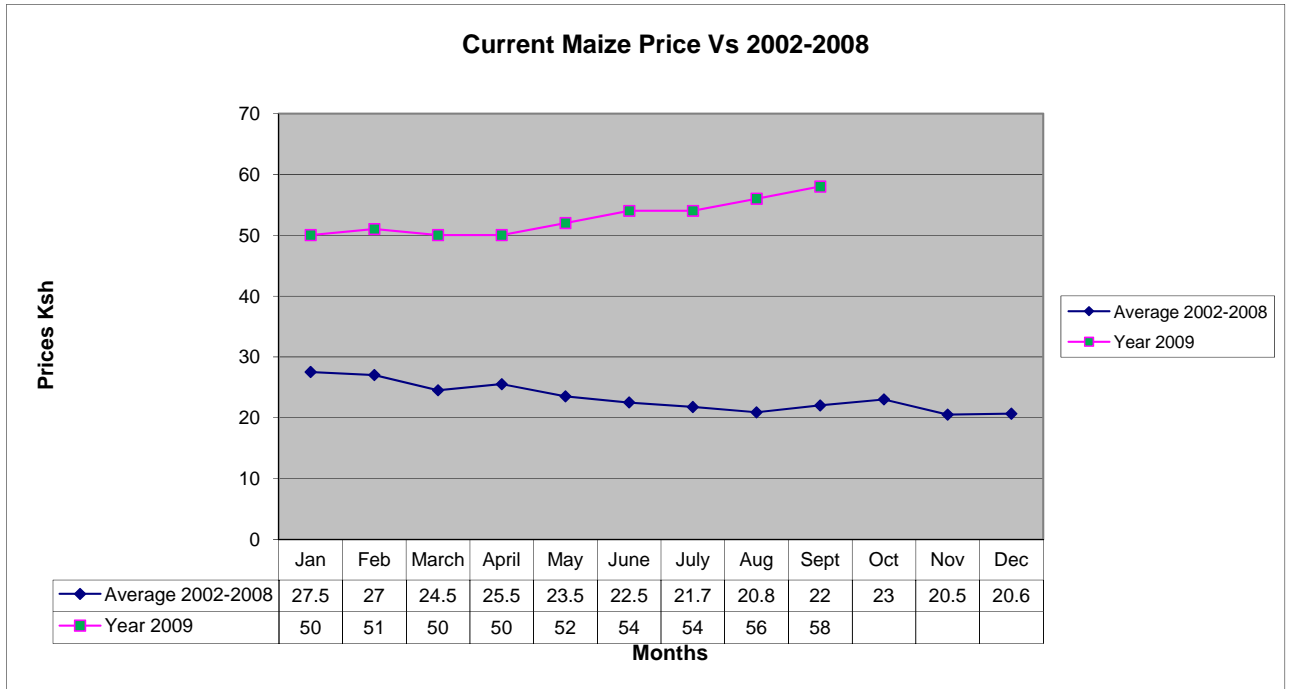
3.3 Milk consumption

- Milk consumption is extremely low as the commodity is scarce with the few available used as alternative source of income to purchase other commercial foods.
- Young children under five of age are developing deficiency due to lack of milk consumption
- Communities especially in settlements have now opted for powdered milk as alternative milk supply.

3.4 Crop prices

3.4.1 Maize prices

The graph below indicates maize long term mean prices against current year 2009.



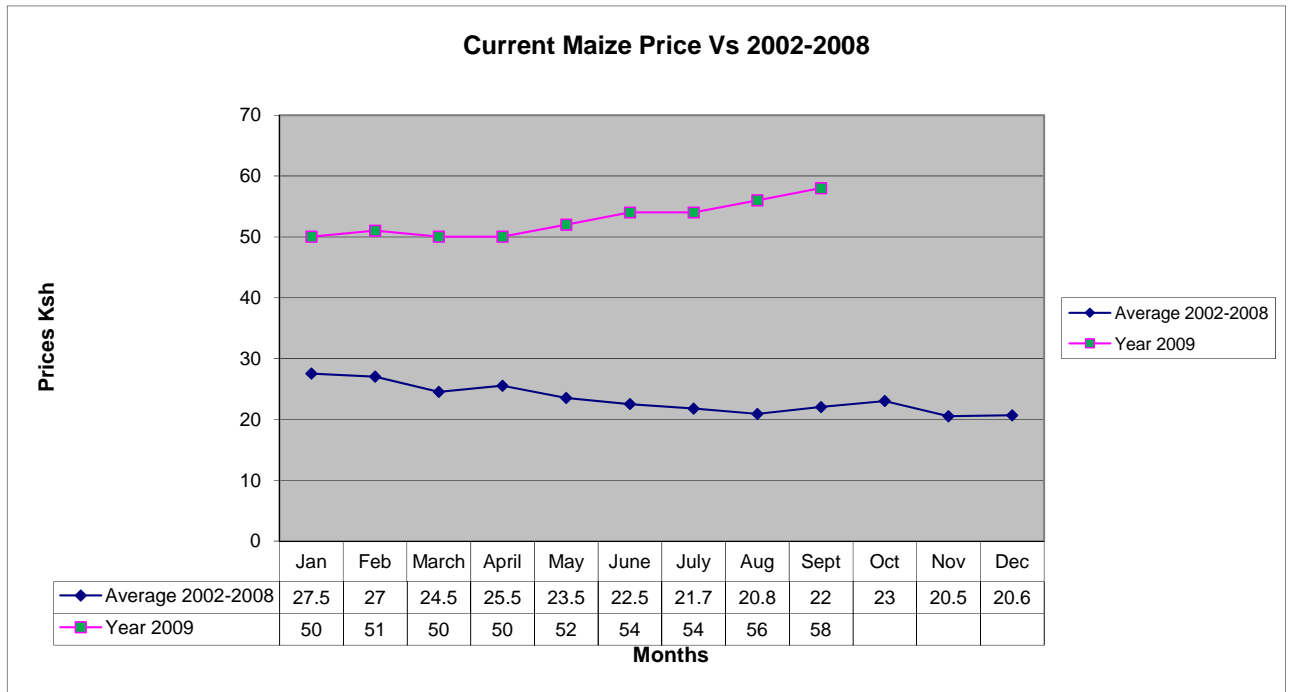
N=420

- Maize prices increased since the food aid target was low and commodities were expensive due to high transportation costs and high demand.
- The average price was Ksh 58 per kilo compared to Ksh 56 in August.

3.4.2 Posho (maize meal) prices

- Posho prices increased slightly compared to the previous month due to high transportation cost and increase in fuel prices.
- The average price was Ksh64 per kilo.

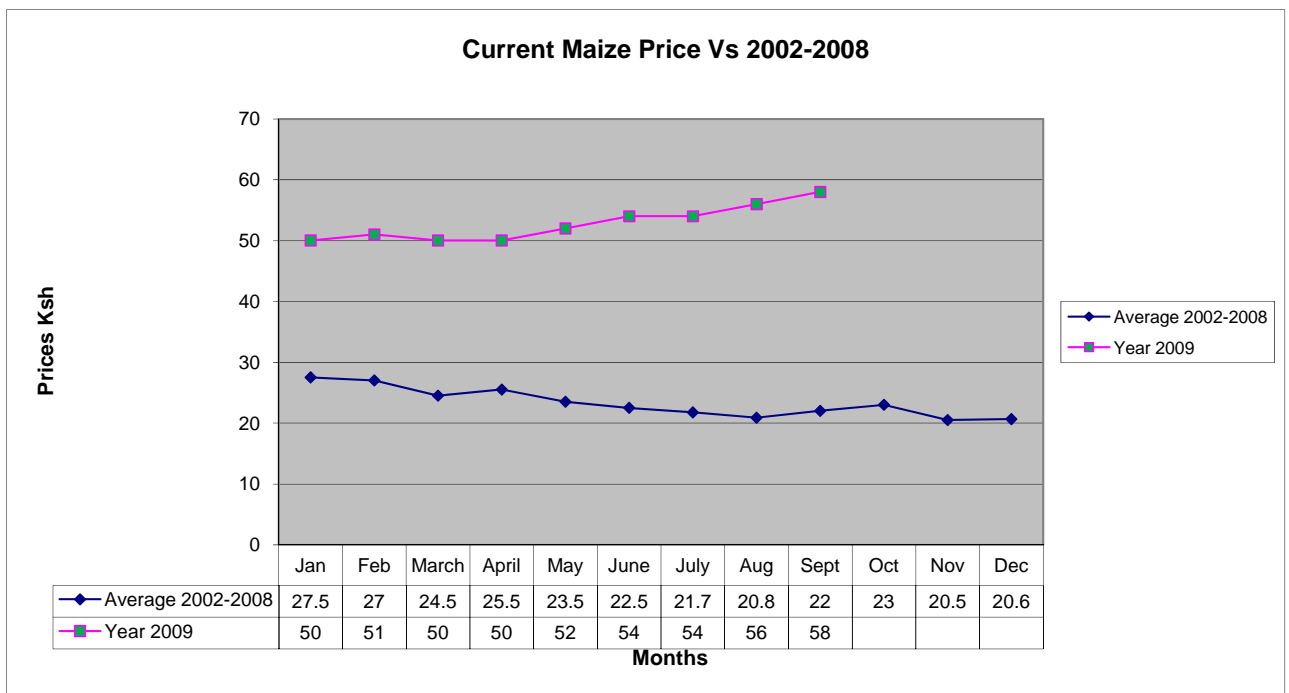
The graph below indicates the long mean price of Posho against the current year 2009.



N=420

3.4.3 Rice prices

The graph below indicates long term mean prices of rice against the current year 2009.



- The price of rice increased compared to the previous month from Ksh78 to Ksh80 due to increase in transport costs and increase in other cereals.

3.5 Income

3.5.1 Crop income

- Kitchen farming, using small-irrigation pumps, especially in Wajir central was alternative source of income.
- Water melons were grown widely in small irrigation farms.

3.5.2 Livestock income

- The main source of income was sale of livestock but poor prices, low demand and poor body condition all had a negative set back to the pastoralist community.

3.5.2 Other income

- Wages at water sources, especially at the shallow wells.
- Sale of miraa, quarrying and daily casual labour.
- Fetching of firewood were other alternative sources of income, especially in small business/informal livelihood zone.

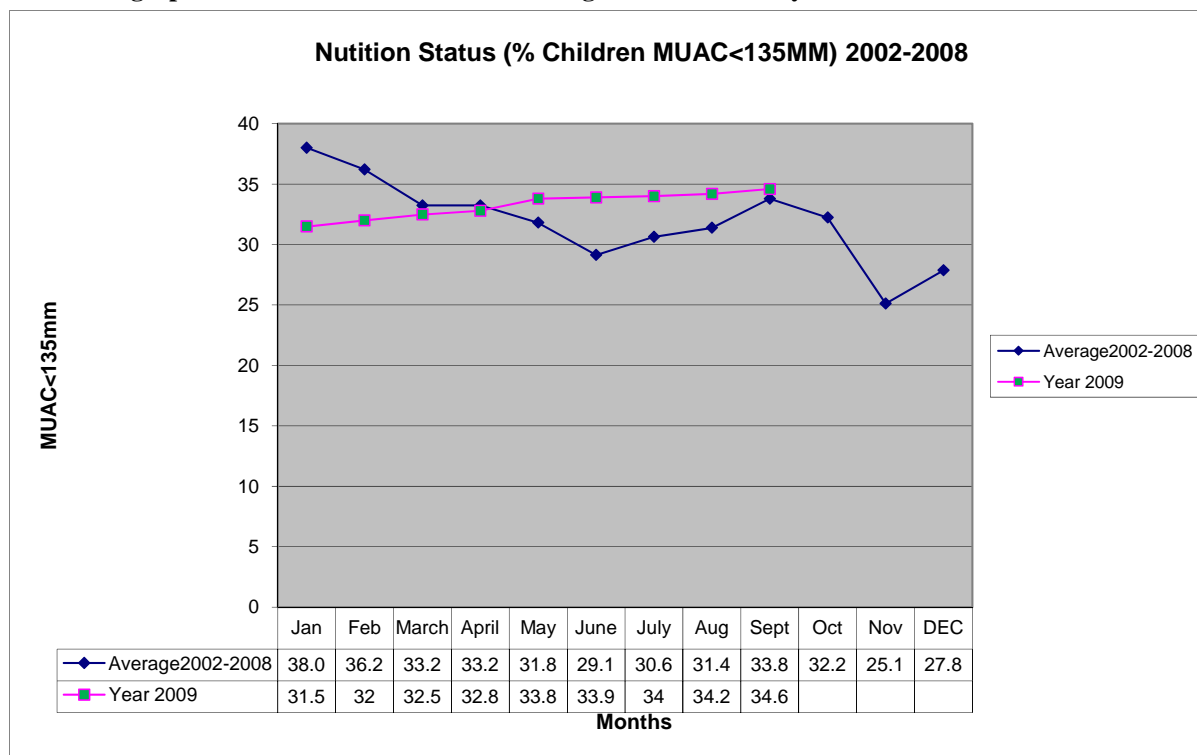
3.6 Implication of food security

- The main source of income is sell of livestock but poor price, low demand and poor body condition all have a negative set back to the pastoralist community.

4.0 Human welfare indicators (Utilisation of food)

4.1 Nutrition status

The graph below indicates nutrition status against the current year 2009.



N= 420

- The nutrition status of children below five years (based on MUAC < 135mm measurement) declined during the month, with the percentage of those rated at risk of malnutrition rising slightly to 34.6% from 34.2% in August.
- The rates showed rising trends in Hadado, Buna, Tarbaj, Wajir bor and Sabuli. The rise was attributed to the adverse effects of the prolonged drought, poor child care practices, escalating food prices, low purchasing power, lack of protein diet and poor hygiene and sanitation practices.

4.2 Health

- The main causes of morbidity and mortality in the district remained malaria, upper respiratory tract infections, intestinal worms, malnutrition and cases of diarrheal and Kalaazar especially in Wajir west and south.

4.3 Flagged areas

- Cases of kwashiorkor were reported in Ogoralle, Ajawa, Buna , Kutulo and Wajir-Bor. Deaths of livestock were also reported in Salamaa.

5.0 Current interventions

5.1 Non food interventions

- Emergency water trucking to centers and fall back areas with pasture by Oxfam, Almp, CDF and Water.
- Support to emergency b/hole repairs, replacement of submersible pumps and repair of engines and replacement of draw pipes and fuel subsidy by (ALRMP.)
- Health education/disaster emergency preparedness for the expected El-Nino.

5.2 Food aid

- Nutritional supplementary program by Merlin in Wajir west/North and Save the Children UK in Wajir East and South.
- Hunger and Safety Net program (HSNP).
- EMOP by World Food Program/GOK through the lead Agency Aldef-Kenya and implementing agency Wasda.
- School feeding program supported by WFP is on-going.
- Support to orphanage through Islamic Madarasas.

5.3 Other coping strategies.

- Separation of livestock herds to small stock and large stock, slaughtering of calves.
- Purchasing of food on credit.
- Reliance on remittances.
- Migration of pastoralists to areas with better pastures, browse and water.

6.0 Recommendations to DSG and KFSM

- Purchase of equipment for emergency boreholes with gen-set and pump, draw pipes, borehole cables and control valve. (Action: Alrmp,Mow(water),Oxfam)

- Provision of standby gen-set, submersible pumps, fast moving spares and fuel subsidy for emergency drought mitigation measures. (Action: Alrmp, Oxfam, Aldef and Unicef)
- Purchase of bladder tanks and plastic tanks.
- Emergency water drilling of contingency boreholes in areas with shortages, especially Shimbir bul, Matho, Qudama and Gunana.
- Ensure all boreholes are operational at optimum level including repair of the existing ones and ensuring that they are functional.
- Purchase of tools for borehole maintenance team and repair of water bowsers.
- Continuation of de-stocking programme (livestock off-take), especially cattle and shoats.(Action MoLD/OXFAM, VSF/Alrmp/KRCS).
- Provision of relief hay and livestock concentrate.
- Allocate emergency funds for mass vaccination of small stock against PPR and CCPP in the entire district.
- Strengthening of peace conflict mechanism especially along Wajir – Marsabit boarder and bore holes.
- Increase food aid targets to 75% of the population considering the poor purchasing power of the pastoralists.
- Provision of contingency fund for drought mitigation due to the failure of the long rains. (Action : ALRMP/OXFAM).
- Nutritional intervention especially in the worst affected areas like Wajir bor, Kutulo, Hadado, Eldas and Buna through SFP/OTP.