

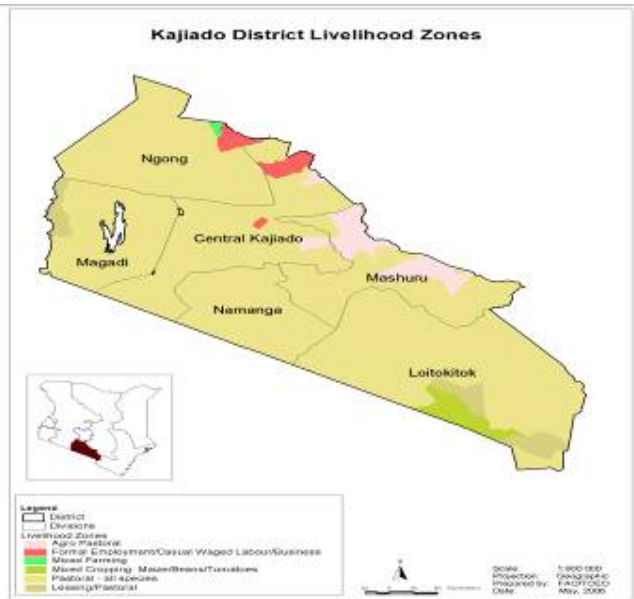


**OFFICE OF THE PRIME MINISTER  
MINISTRY OF STATE FOR THE DEVELOPMENT OF NORTHERN KENYA AND OTHER ARID LANDS  
ARID LANDS RESOURCE MANAGEMENT PROJECT II**

**DROUGHT MONITORING BULLETIN, JANUARY 2010**

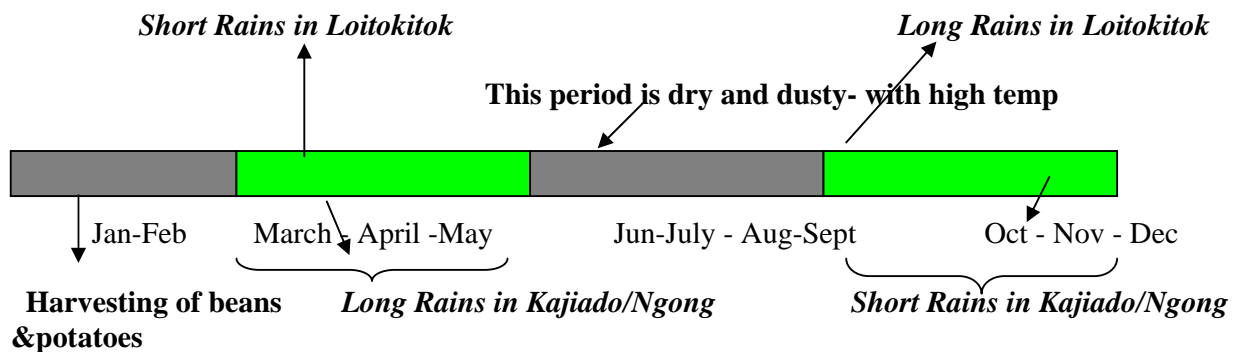
**Kajiado Central, North and  
Loitokitok districts**

**Warning stages**



Livelihood Zone	Warning Stage	Trend
Pastoral-All Species	Alert	Improving
Agro Pastoral	Alert	Improving
Mixed Farming	Alert	Improving
Casual/Waged labour/Business /trade	Normal	Improving
District	Alert	Improving

**Seasonal Calendar**



## **Situation overview**

- There was moderate to heavy rains during the 1<sup>st</sup> dekad of the month, the other dekad remained dry in most parts of Loitokitok, Kajiado north and Central districts.
- Water availability for agriculture, livestock and domestic improved as result of the enhanced rains, recharging all temporary surface water points such as water ponds, dams and pans had water, reducing the dependence and reliance on boreholes. However pastoral areas of Magadi division remained dry owing to below normal rainfall in most parts.
- Distances to and from watering points improved in most parts of the district; the distance ranged between 3km to 5km in most areas, improving livestock body condition
- Average cattle prices increased by 23.8 per cent from Ksh 6,584 in December 2009 to Ksh 8,152 in January 2010.
- There was improvement of early planted crop in the high potential areas of Loitokitok and Ngong. Harvesting of beans and potatoes was ongoing, while maize was at milk/hard dough stage. However, in the marginal rain-fed crop growing areas the performance of crops was poor, as result of the extended dry spell and below normal rainfall; most evident in Agro pastoral areas of Meto and Nkiito in Namanga and Lower Loitokitok (Empiron, Kisanchani and Mile Tatu), where water stress was evident.
- Kajiado is a net food importer of cereals, close to 90% of the household food needs was from purchases. Milk production remains low, maize and beans were available but at high price (maize and beans prices were at Ksh 42 and Ksh 80 per kg respectively). Continuing maize export ban from Tanzania and poor pastoralists' term of trade has exacerbated the deficits.
- EMOP relief food pipeline break was restored but the food ration was reduced to 50%.
- The nutrition status of children 12-59 months remained high but the percentage of those rated at risk of malnutrition declined to 14.1 from 14.98. This can largely be attributed to availability of vegetables and milk. Children continued to feed on cereals (maize and maize flour) than on their traditional diet of milk..
- Diarrhea and cholera outbreak were reported in Kware Slums in Ongata Rongai (Ngong) and, Bissell, Ilmarba, Lorngosua, Kumpa, Meto, Ngatatiek, Torosei and Ilpartimaro (Central).
- Demand for labour in crop growing areas improved and rates ranged between Ksh120 and 150.

## **Recommendations to DSG and KFSM**

- Expansion of school feeding program to cover more schools in the pastoral areas (Action: WFP)
- Livestock Production and Veterinary Services:
  - Restocking, especially the breeding herds to enable pastoralist restore the losses estimated at 50%
  - Livestock disease surveillance/ disease control : vaccination and provision of FMD, CBPP, LSD, trypanocidal drugs and CCPP, sheep and goat pox vaccines (action: DVS/DVO)
  - Pasture conservation ( stock piling of hay a drought preparedness strategy).
- Agriculture: Avail ling next season relief seeds stock for the districts (MoA)
- Health and Nutrition : Cholera and diarrhea disease surveillance and control (MoH)

**Ongoing interventions**

<b>Institution</b>	<b>Intervention (on going)</b>
<b>Livestock and Agriculture</b>	<ul style="list-style-type: none"><li>• RVF vaccination : 15,000 small stock vaccinated in the hot spots areas of Mashuru, Kajiado Central (DVO – Kajiado Central) and CCPP vaccination</li><li>• Relief seeds provisions</li></ul>
<b>Water development</b>	<ul style="list-style-type: none"><li>• 100 plastic tanks of 10,000-16,000 liters for schools and community , distributed to institution – on going</li><li>• Drilling and rehabilitation of boreholes and shallow wells</li><li>• Diesel subsidy to community boreholes</li></ul>
<b>Relief Food EMOP</b>	<ul style="list-style-type: none"><li>• The pipeline has been restored, December 2009 completed in all the districts targeting 184,000 persons at 50% ration level</li></ul>
<b>Nutrition and Health</b>	<ul style="list-style-type: none"><li>• Implementing an Integrated Management of Acute Malnutrition (IMAM) Programme (Mercy – USA and Concern Worldwide)</li><li>• Cholera surveillance, control and community awareness campaign (ALRMP/MoH)</li></ul>
<b>Education</b>	<ul style="list-style-type: none"><li>• Construction of PCEA Upper Matasia science lab (Ksh.2,500,000) in Kajiado North, Pilewa Primary dormitory ( Ksh.3,000,000) in Kajiado Central and a classroom at Inkoi Suk Primary School, Loitokitok (Ministry for Development Of Northern Kenya and other Arid Lands)- ongoing</li></ul>

## 1.0 Environmental indicators (Stability)

### 1.1 Rainfall

Rainfall data as at January 2010 compared to long term average 2003-08



Source: ALRMP sample sites. Total sample size (n)-11 sites

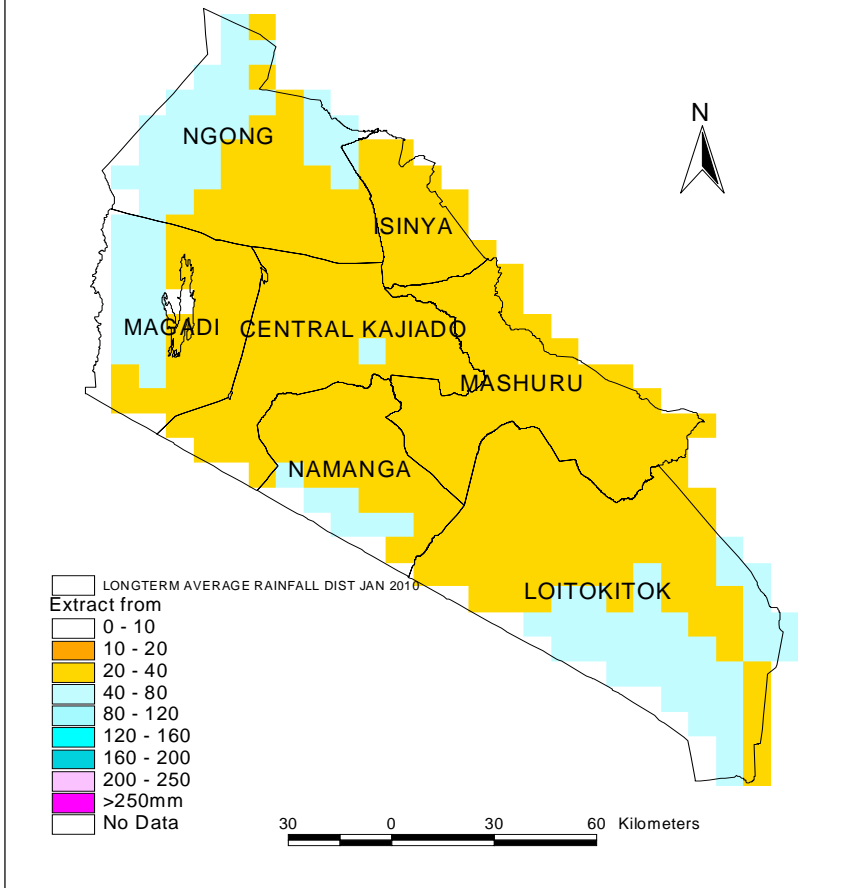
- Dry to wet weather condition prevailed; intermittent, scattered to moderate rainfall was received during the 1<sup>st</sup> dekad of the month in most parts of Loitokitok, Kajiado north and central districts
- Availability of good rainfall across all livelihood zones is expected to trigger improvement in food security in the districts.

Division	Central Loitokitok	Kajiado central	Magadi	Namanga	Ngong	Mashuru	Isinya
Amount (mm)	92.0	78.3	72.0	71.0	97.0.0	37.0	94.6
No. Of Rainfall Days	6	6	8	5	7	3	4

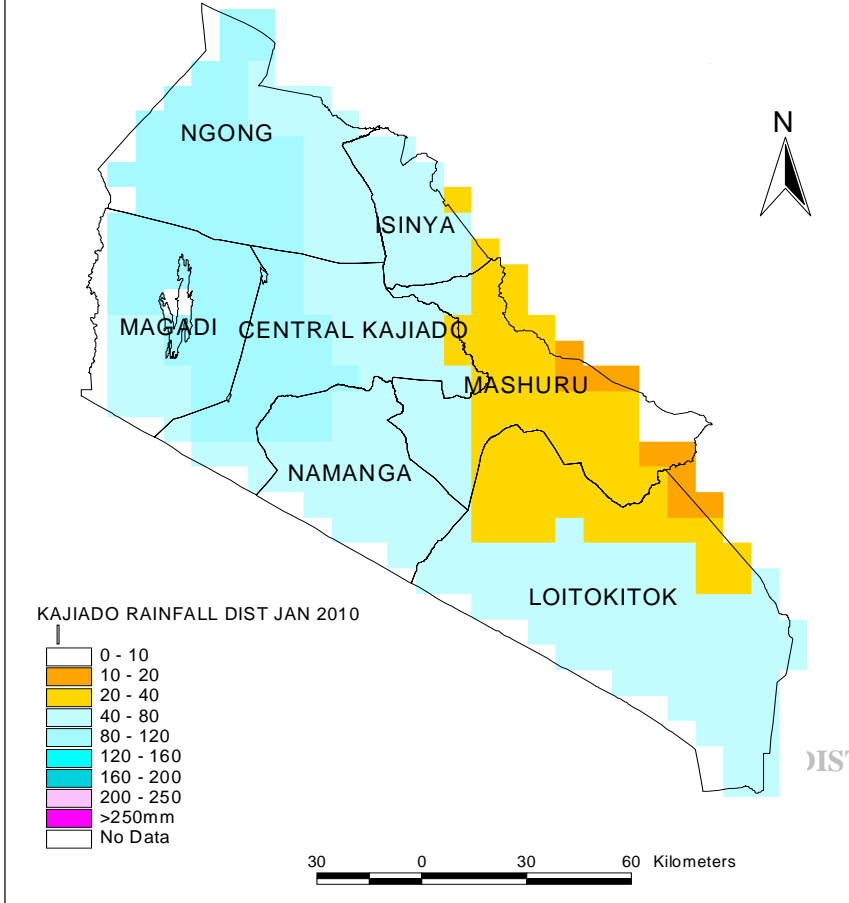
#### Average and long term rainfall distribution

There was moderate to heavy rains in most part of the district. Most of the rainfall was received during the 1<sup>st</sup> Dekad of January.

### LONGTERM RAINFALL DISTRIBUTION JAN 2010

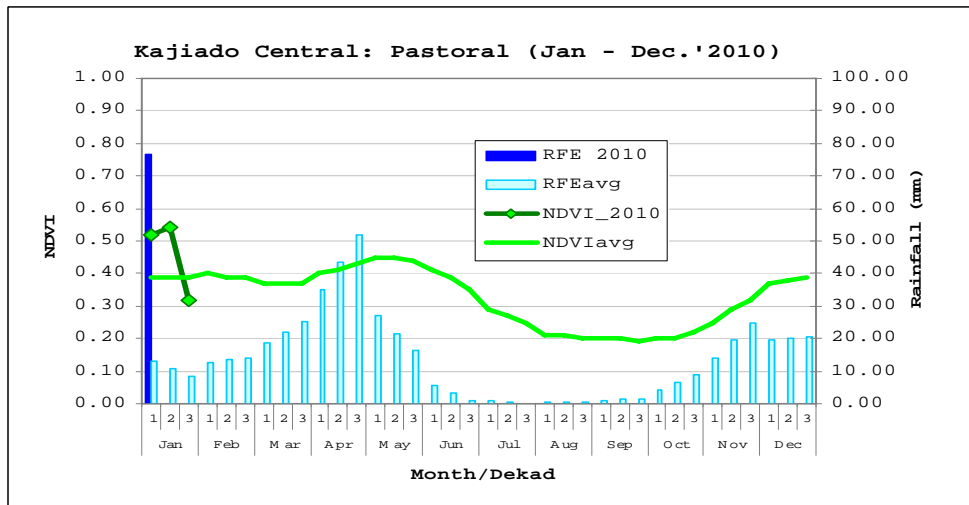
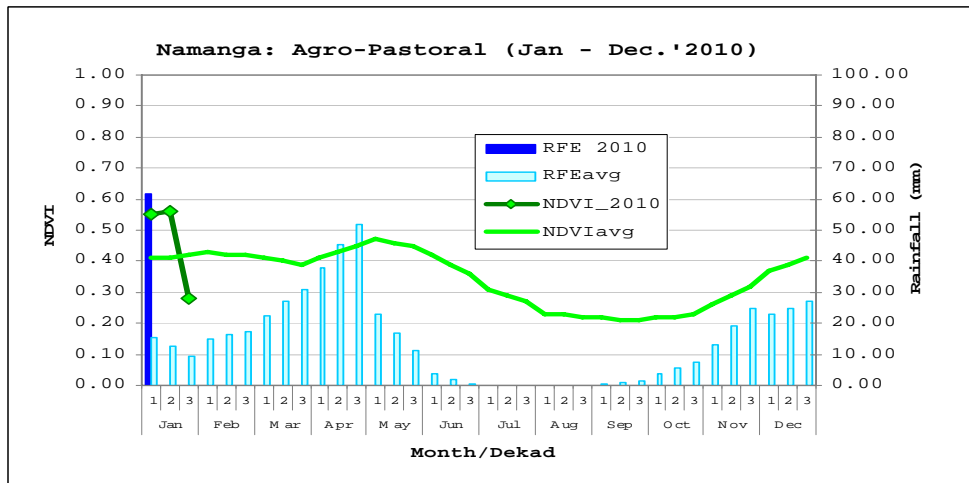
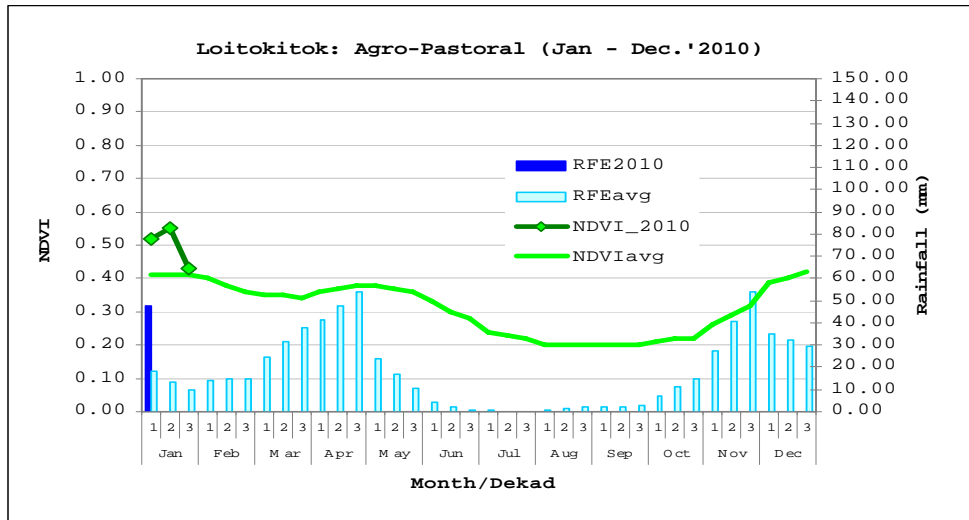


### CURRENT RAINFALL DISTRIBUTION JAN 2010-KAJADO DISTRICT



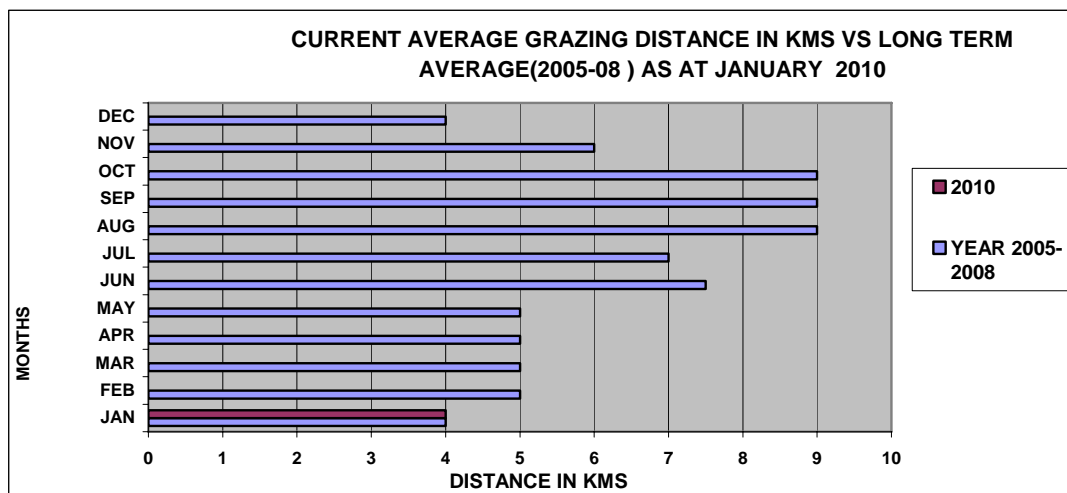
## 1.2 Condition of natural vegetation and pasture

There was improved pasture and browse availability (green and lush) and accessibility as result of regeneration to all livestock types. The observed range condition had corresponding positive impact on livestock productivity and subsequently desirable impact on food security status.



### 1.2.1 Distance to grazing areas

Distance to grazing areas was within the normal radii of less than 10 Kms in most areas.



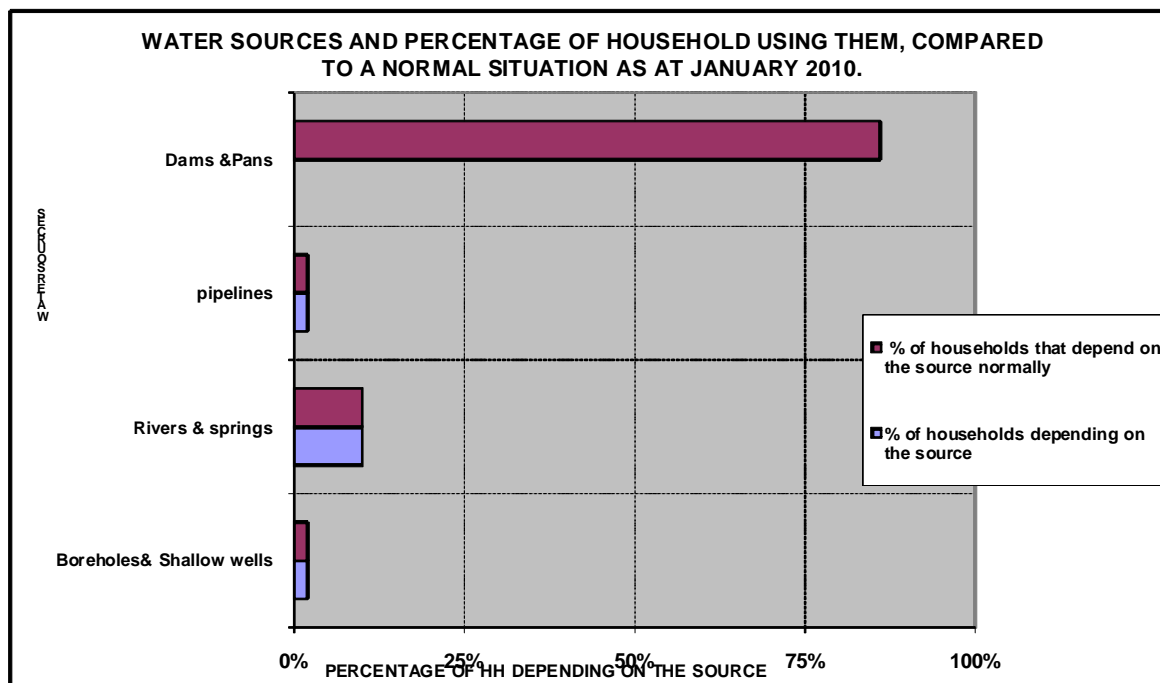
Source: ALRMP sample sites, Total Sample size (n) 270 households

The observed situation was normal.

### 1.3 Water sources and availability

Table 2: Water sources and percentage of household using them, compared to a normal situation.

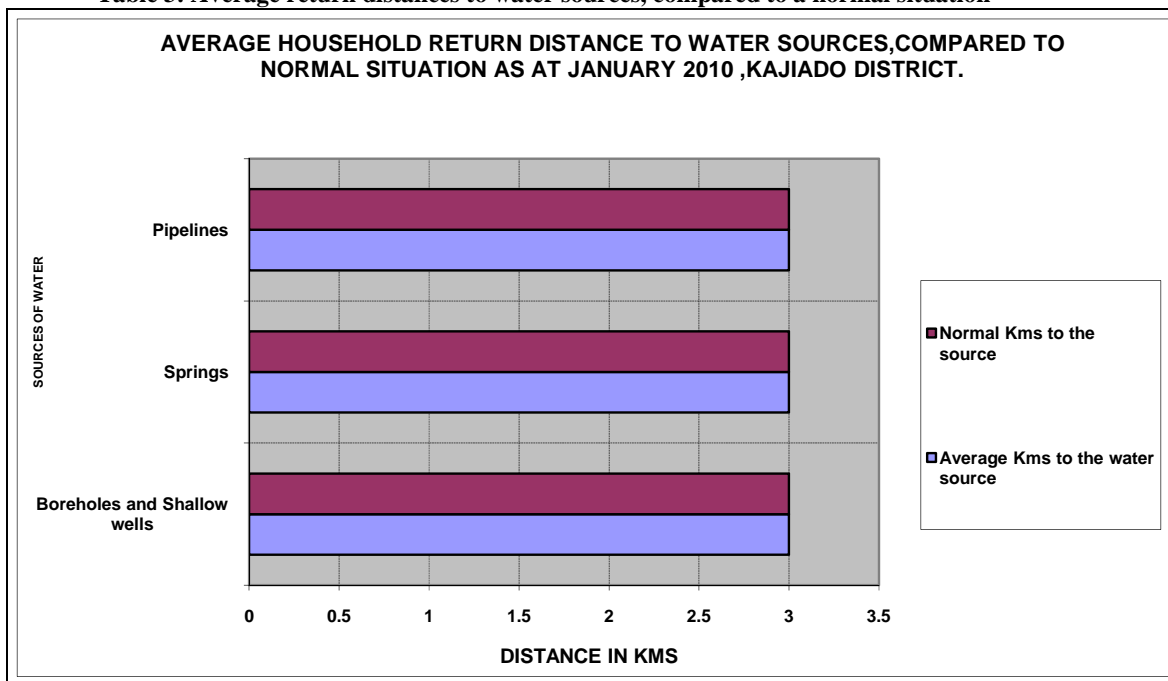
Source: ALRMP sample sites, Total Sample size (n) 270 households



Most temporary water sources (dams and pans) were recharged. Natural springs and seasonal rivers had adequate water. Generally, water availability and accessibility was good across all the three districts. The observed situation was normal.

### 1.3.1 Household access to water

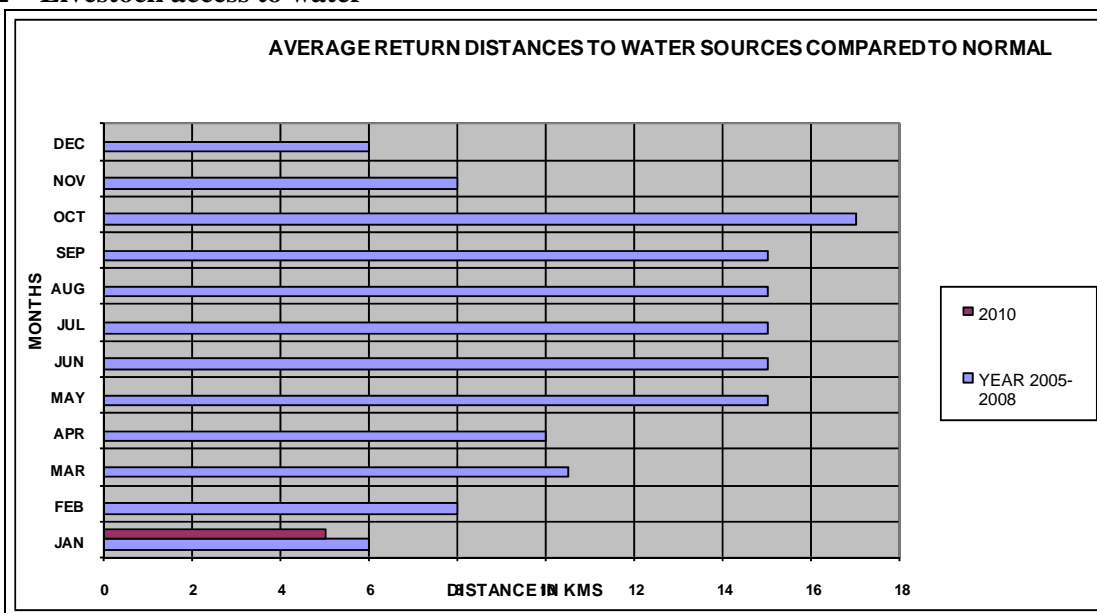
Table 3: Average return distances to water sources, compared to a normal situation



Source: ALRMP sample sites, Total Sample size (n) 270 households

The average distance to water sources is 3kms. Return time for fetching water for domestic use reduced to less than 1hour in most areas.

### 1.3.2 Livestock access to water



Source: ALRMP sample sites, Total Sample size (n) 270 households

Distance from grazing points to water points was 3kms (one way), the observed situation was normal at this time of the year.

## **1.4 Emerging issues**

- Diarrhea and cholera in Kajiado Central and Kajiado North districts.
- Increasing cases of floods on the low land: most feeder roads were rendered impassable as a result of heavy floods, bridges and Irrigation canals were swept away by floods and livestock and human deaths (Ewuaso Kedong and Magadi). Crop damage in the low lands and in the irrigation farms.
- Foot and Mouth Disease (FMD), contagious caprine pleuropneumonia (CCPP) were reported by most household's members.
- Threat of CBPP as pastoralists are buying livestock for restocking from Dagoreti and Njiru markets

## **2.0 Rural economy indicators (Food availability)**

### **2.1 Livestock production**

#### **2.1.1 Livestock body condition**

All livestock kinds maintained good body condition district wide. This is mainly attributed to pasture and water availability in most parts of the district. The observed trend had positive implications on food security as livestock in good body condition fetched good prices.

#### **2.1.2 Livestock health**

Foot and Mouth Disease (FMD) and contagious caprine pleuropneumonia (CCPP) were reported by most household's members.

#### **2.1.3 Milk production**

An average of 1.5 liters was recorded. Milk was mostly from shoats and few lactating cows. The current milk consumption trend had positive food security implications at household level.

#### **2.1.4 Livestock migration**

All livestock were in their wet season grazing areas. However, livestock from Oldoinyonyokie and Olkiramatian group ranches in Magadi moved to Kajiado central in search of pasture owing to poor rains.

## **2.2 Crop production**

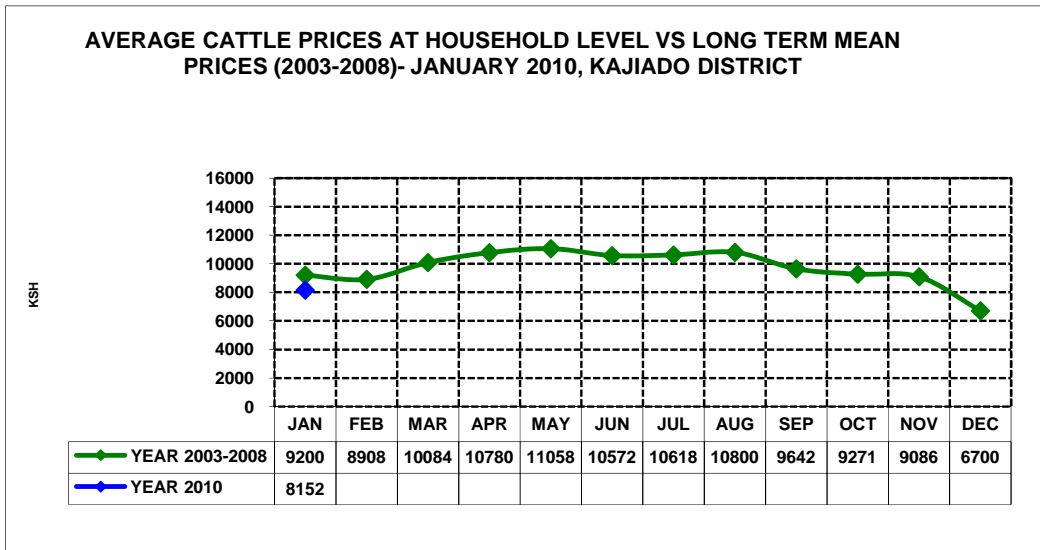
### **2.2.1 Timeliness and status of crop production activities**

- There was improvement in early planted crop in the high potential areas of Loitokitok and Ngong. Harvesting of beans and potatoes was on going while maize was at milk/hard dough stage. However, in the marginal rain fed crop growing areas the performance of crops was poor, as result of the extended dry spell and below normal rainfall; most evident in Agro pastoral areas of Meto and Nkiito in Namanga and Lower Loitokitok (Empiron and Mile Tatu). There is need for some rains, as there evidence of water stress
- Cases of rotting of mature beans as a result of excess rainfall were reported in Rombo, Entarara and Ilasit in Loitokitok district. A bag of 90 Kg of beans were sold at 3000.

### 3.0 Access to food

### 3.1 Livestock marketing

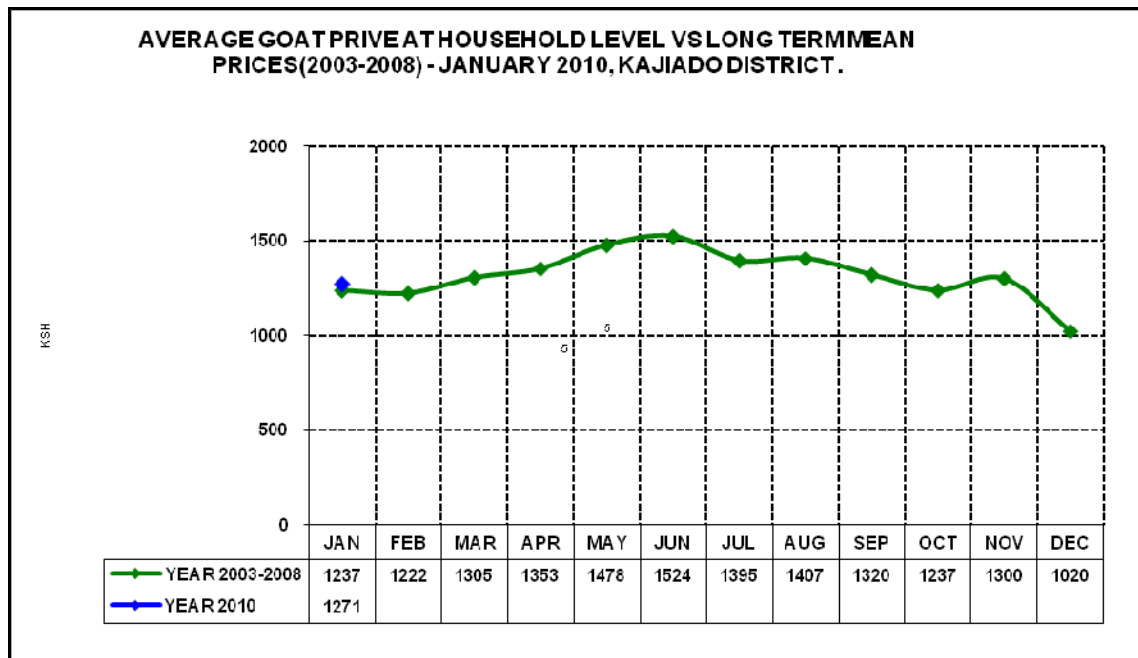
#### 3.1.1 Cattle prices



Source: ALRMP sample sites, Total Sample size (n) 270 households

Average cattle prices increased by 23.8 per cent from Ksh 6,584 in December 2009 to Ksh 8,152 in January 2010. The price was below long term average by 11.39 per cent. The observed trend was attributed improved body condition and decline in supply to the markets as farmers were holding back their livestock anticipating livestock improvement.

#### 3.1.2 Goats prices

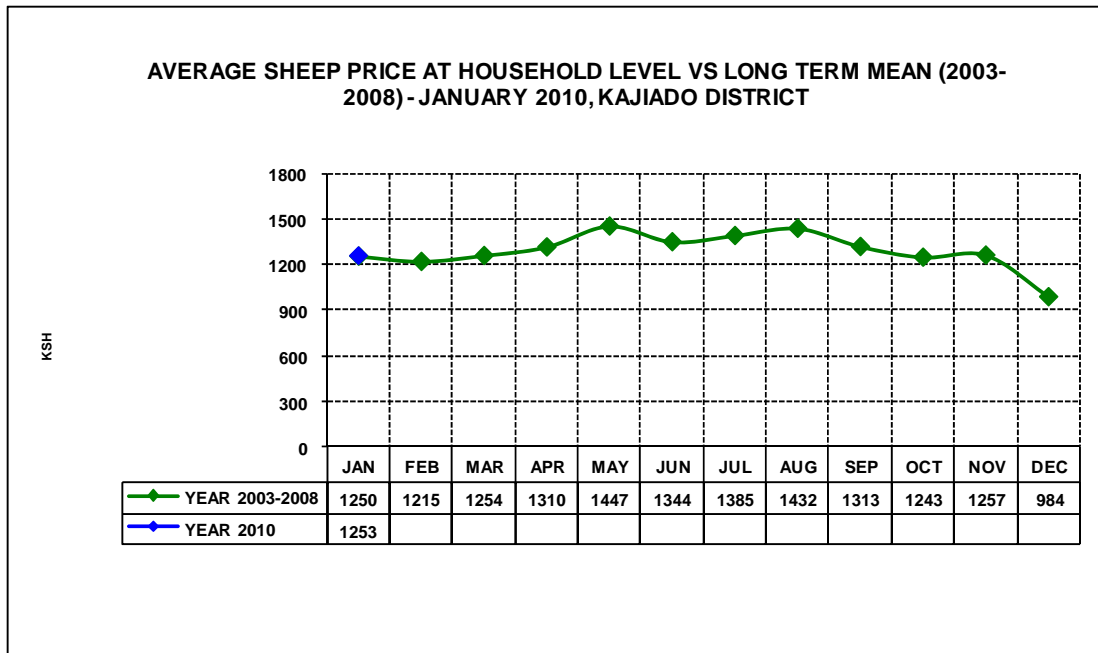


Source: ALRMP sample sites, Total Sample size (n) 270 households

Average goat prices increased slightly by 0.39 percent from Ksh1, 267 in December to Ksh 1271 in January 2010. The price was above long term mean and the trend was attributed to

improved body condition and decline in supply to the markets as farmers were holding back their livestock anticipating livestock improvement.

### 3.1.3 Sheep prices



Source: ALRMP sample sites, Total Sample size(n) 270 households

Sheep prices increased by 0.32 percent during the month. The increase was attributed to decline in supply to markets. Browse condition has improved in most areas and shoats' condition is improving.

### 3.1.4 Milk consumption

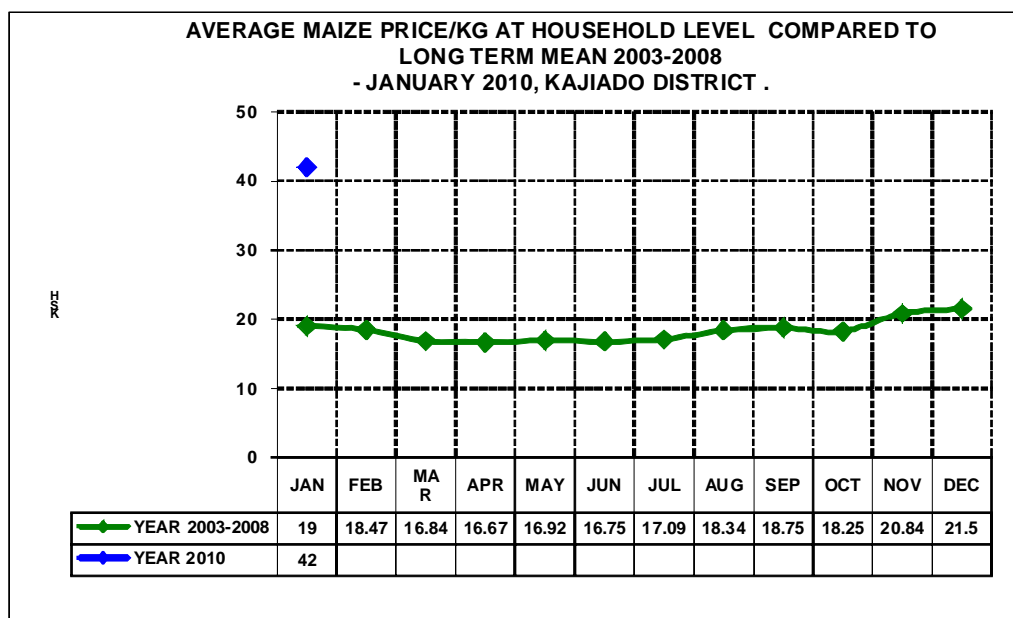
Milk was mostly from shoats as most lactating cows and calves died as a result of drought. Availability and accessibility of milk in the rural pastoral household was on upward trend. However, the observed situation is much below normal compared to normal year. Improved access to milk has positive implications on food security, especially for children under five years.

### 3.2 Implications on food security

Improved livestock prices had positive implication on food security at household level. Availability of vegetables at affordable prices has generally reduced the burden of purchasing highly priced cereals and improved nutrition status.

### 3.3 Food prices

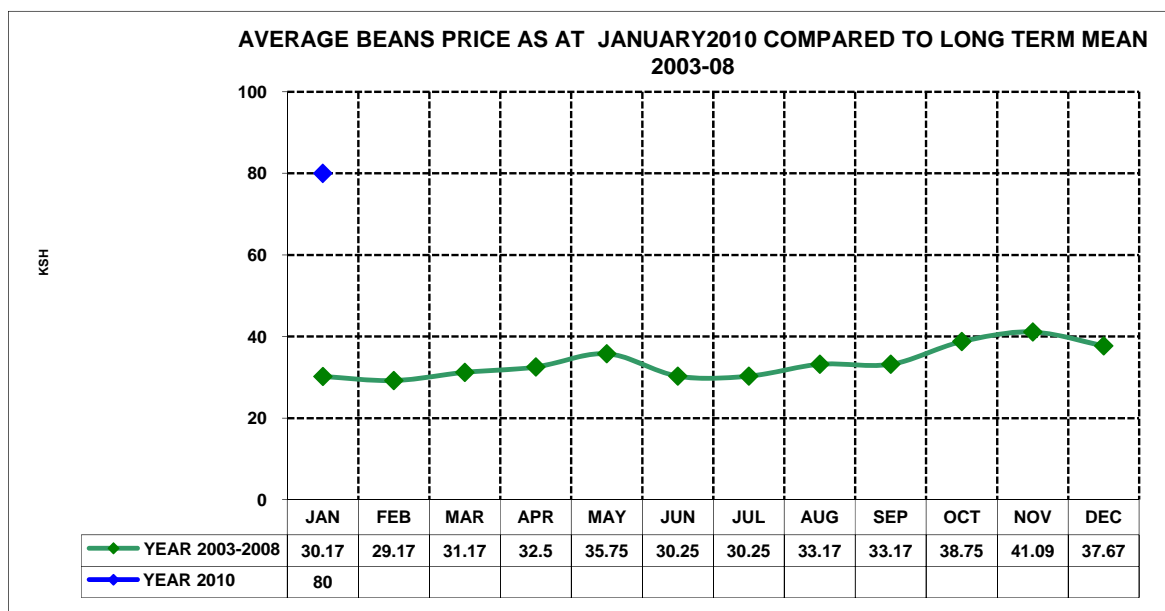
#### 3.3.1 Maize prices



Source: ALRMP sample sites, Total Sample size (n) 270 households

- The average maize price stabilised at Ksh 42 per kilo. The district depends on external supplies from neighbouring districts and Tanzania. The scarcity is mainly attributed to poor performance of crops as a result of recent drought.

#### 3.3.2 Beans prices



S

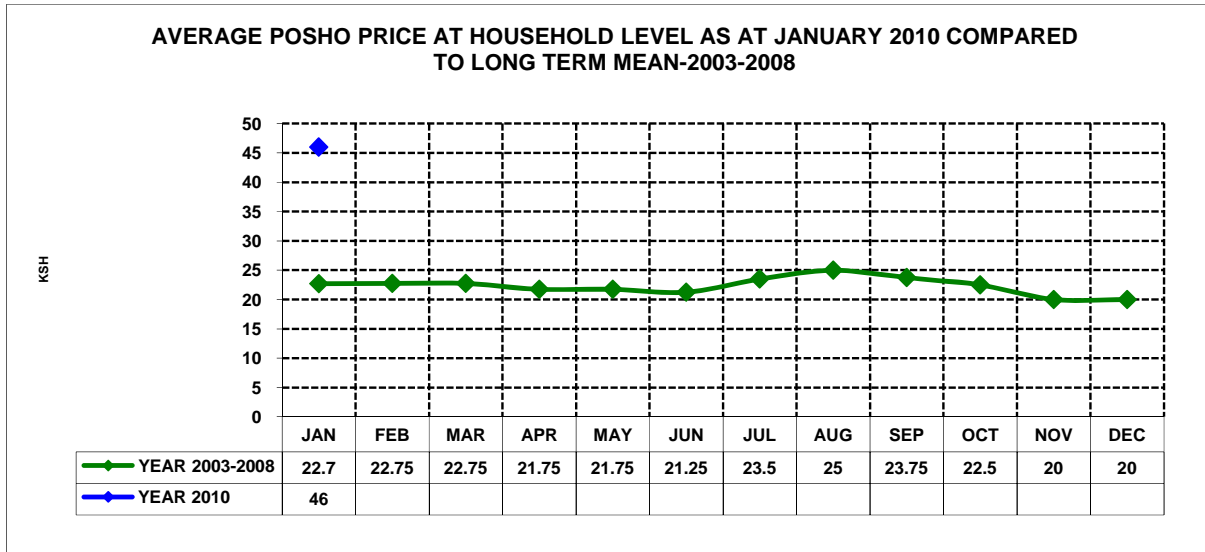
Source: ALRMP sample sites, Total Sample size (n) 270 households

- The average beans prices remained high but stabilised at Ksh80 per kilo. The prices were abnormal compared to long term mean of Ksh 37 per kilo. However, beans price

at Rombo in Entarara declined owing to the ongoing harvest. Beans were selling at Ksh 3000 per 90kg bag in the two locations.

- The districts remained dependent on external supplies from neighboring districts and Tanzania. The scarcity is mainly attributed to poor performance of crops as a result of recent drought.

### 3.3.3 Posho (locally milled maize meal) prices



Source: ALRMP sample sites, Total Sample size (n) 270 households

The average price of posho stabilised at Ksh46 per kilo. The price was above normal compared to the long term mean of Ksh20 per kilo. Maize harvest expected in April 2010.

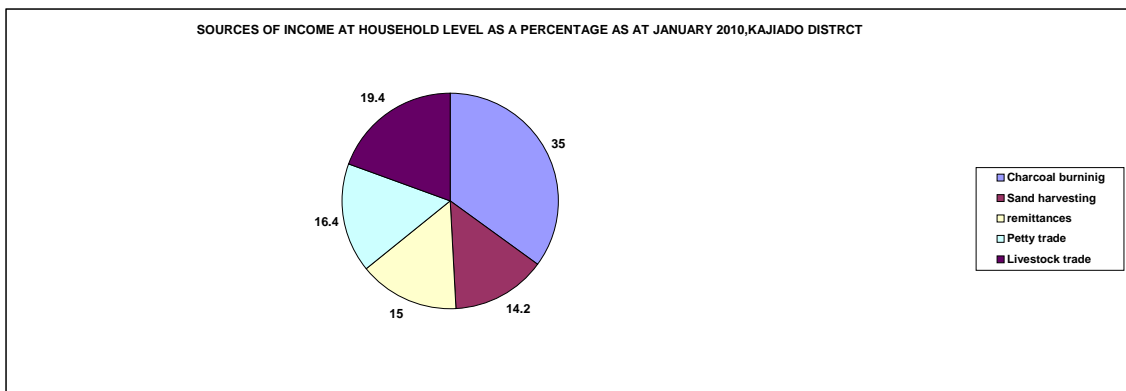
## 3.4 Income

### 3.4.1 Crop income

Generally there was no crop income in most of rain-fed crop growing areas owing to the recent drought in the three districts. However, sale of beans, vegetables and potatoes was evident in high potential areas of Ngong and Loitokitok. Sale of maize is expected in April 2010.

### 3.4.2 Livestock income

- As was in the previous month, January 2010 was characterised by low supply of livestock to the market hence low income. Livestock prices increased owing to pastoralists holding back their stock.
- Other sources of income were sale of charcoal, sand harvesting, petty trade and remittances.
- Charcoal burning remained the main source of income for many households across all livelihood zones followed by sale of livestock. The observed trend can largely be attributed to the recent homes. One bag of charcoal sold between Ksh 400-600.



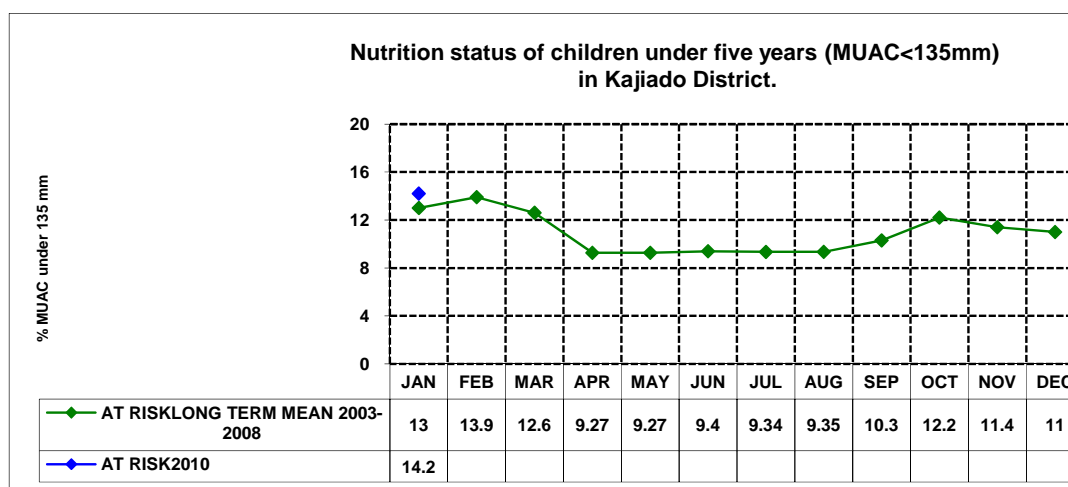
Source: ALRMP sample sites, Total Sample size (n) 270 households

### 3.5 Terms of trade for pastoralists

Pastoralists' terms of trade improved as livestock prices appreciated compared to the previous month, however, the gains have been impacted negatively by high cereal prices.

## 4.0 Human welfare indicators (Utilisation of food)

### 4.1 Nutrition status



Source: ALRMP sample sites, Total Sample size (n) 270 households-1,343 children were examined.

- The nutrition status of children 12-59 months remained high. However the percentage of those rated at risk of malnutrition declined to 14.2 from 14.98. This can largely be attributed to availability of vegetables and milk.
- Nutrition status of children under five years is expected to improve in the next few months if the rains are sustained.

### 4.2 Human health

Diarrhea and cholera outbreak were reported in Central and Ngong districts due to poor sanitation (most families source of water are dams and pans). Kware Slums in Ongata Rongai (Ngong) and, torosei, Bissell, Ilmarba, Lorngosua, Kumpa, Meto, Ngatatiek and Ipartimaro ( Central) – 9 deaths has so far been confirmed.

## 5.0 Current interventions

<b>Institution</b>	<b>Intervention (on going)</b>
<b>Livestock and Agriculture</b>	<ul style="list-style-type: none"> <li>• RVF vaccination : 15,000 small stock vaccinated in the hot spots areas of Mashuru, Kajiado Central (DVO – Kajiado Central) and CCPP vaccination</li> <li>• Relief seeds provisions</li> </ul>
<b>Water development</b>	<ul style="list-style-type: none"> <li>• 100 plastic tanks of 10,000-16,000 liters for schools and community , distributed to institution – on going</li> <li>• Drilling and rehabilitation of boreholes and shallow wells</li> <li>• Diesel subsidy to community boreholes</li> </ul>
<b>Relief Food EMOP</b>	<ul style="list-style-type: none"> <li>• The pipeline has been restored, December 2009 completed in all the districts targeting 184,000 persons at 50% ration level</li> </ul>
<b>Nutrition and Health</b>	<ul style="list-style-type: none"> <li>• Implementing an Integrated Management of Acute Malnutrition (IMAM) Programme (Mercy – USA and Concern Worldwide)</li> <li>• Cholera surveillance, control and community awareness campaign (ALRMP/MoH)</li> </ul>
<b>Education</b>	<ul style="list-style-type: none"> <li>• Construction of PCEA Upper Matasia science lab (Ksh.2,500,000) in Kajiado North, Pilewa Primary dormitory ( Ksh.3,000,000) in Kajiado Central and a classroom at Inkoi Suk Primary School, Loitokitok (Ministry for Development Of Northern Kenya and other Arid Lands)- ongoing</li> </ul>

## 5.1 Coping strategies

- Seeking employment and casual labour.
- Dependence and/or receiving remittances.
- Reduced ration and number of meals per day.
- Charcoal burning and sand harvesting.

## 6.0 Recommendations to DSG and KFSM

- Expansion of school feeding program to cover more schools in the pastoral areas (Action: WFP).
- Livestock Production and Veterinary Services:
  - Restocking, especially the breeding herds to enable pastoralist restore the losses estimated at 50%.
  - Livestock disease surveillance/ disease control : vaccination and provision of FMD, CBPP, LSD, trypanocidal drugs and CCPP, sheep and goat pox vaccines (action: DVS/DVO) .
  - Pasture conservation ( stock piling of hay a drought preparedness strategy).
- Agriculture: Avail ling next season relief seeds stock for the districts (MoA).
- Health and Nutrition : Cholera and diarrhea disease surveillance and control (MoH) .