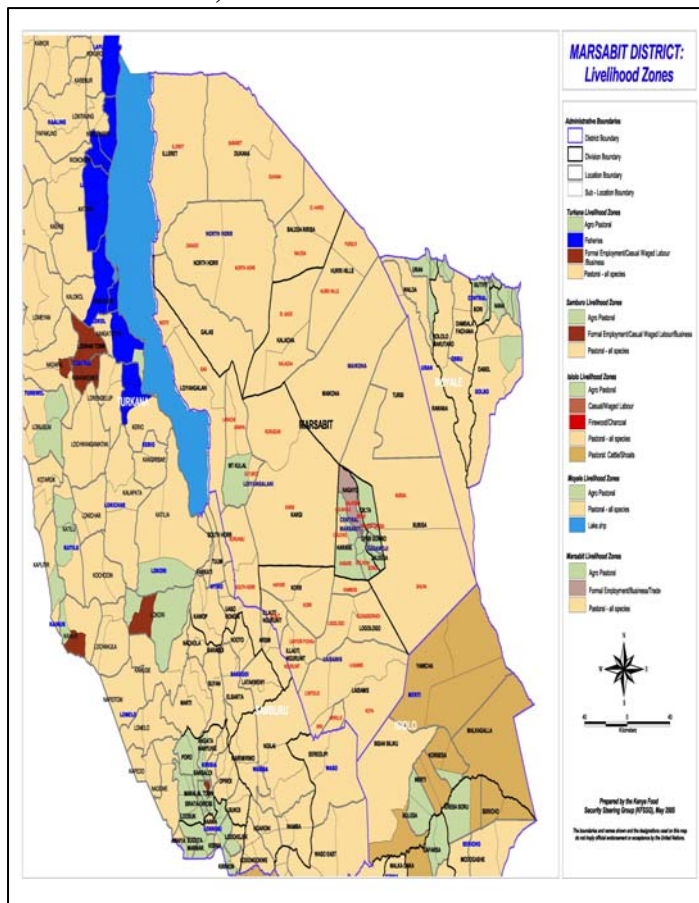




**OFFICE OF THE PRIME MINISTER  
MINISTRY OF STATE FOR THE DEVELOPMENT OF NORTHERN KENYA AND OTHER ARID LANDS  
ARID LANDS RESOURCE MANAGEMENT PROJECT II**

**DROUGHT MONITORING BULLETIN, JANUARY 2010**

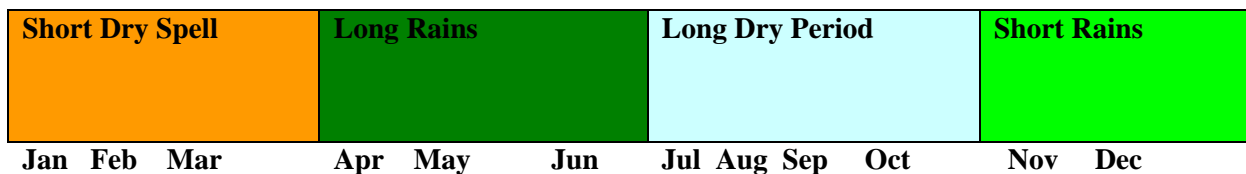
**Marsabit, Laisamis and Chalbi Districts**



**Warning Stages**

Livelihood zone	Warning Stage	Trend
Agro-Pastoralist	Alert	Improving
Pastoral-All species	Alarm	No change
Fishermen/Pastoralist	Alarm	No change

**Seasonal calendar**



### **Situation overview**

- The short rains season ended and parts of Marsabit district reported rainfall during the month under review. Marsabit north district recorded 142mm of rains in two to three days which resulted in significant flood and impassable roads. Mt. Kulal and lowland parts of Marsabit south district also received 72 to 85mm of rainfall in three to four days.
- All water sources were sufficiently recharged by the few days of the storm that ended in 3rd January 2010. No water stress was reported in any part of the district.
- Forage availability was reported in most parts of the district, while some lowland areas including Loiyangalani location in Marsabit south district had the least quantities.
- Body conditions of all livestock species was good and no abnormal disease incidents were reported in the district.
- Minimal cases of malaria and diarrhea were reported among children and few adults, which is normal at this time of the year. However, cases of diarrhea and vomiting (chiegela) were reported in Loiyangalani and El Molo Bay sub locations without death incidence.
- Low and unstable livestock prices, coupled with marginal increase of 23.8% in grain commodities, impacted negatively on the pastoralist and fishermen economy and seriously threatened household food security in greater Marsabit district.
- Water sources were sufficiently recharged in all parts of the greater Marsabit district. Distances between grazing areas and water points remained at minimum average of 10 kms from 12 kms at this time of the year.
- Cases of insecurity (banditry and livestock raids) reduced in all administrative boundaries and this was a positive indication that could be attributed to peaceful disarmament in greater Marsabit district.
- During the month under review households in the Agricultural zone on Mt Marsabit reported to have harvested beans, Teff, wheat and Khat.
- No GoK relief food was distributed but EMOP relief food for November 2009 was allocated to 160 distributing centers in six greater divisions among 120,383 beneficiaries.
- The nutrition status of children below five years declined during the month, with 27% rated at risk of malnutrition compared to 25.7 in December. The decline was attributed to poor feeding habits as a result of lack of milk.

### **Current interventions**

- Provision of veterinary services including, vaccinating 5,564 cattle (CBPP) and 11,000 shoats as only 13,850 does are instock.- Veterinary services.
- Purchase of fishing gear and vessels for Gura Pau community in Loiyangalani-IFAD
- Lottery on cash transfer program was conducted for North Horr and Maikona sub-locations and awarded to North Horr under the Hunger Safety Net Programme.

- A one-day show was conducted on crop, livestock husbandry and mechanism adoption to improve food security situation for larger Marsabit district.- KARI and other food sectors and institutions.
- Rapid Assessments conducted in preparation for Short Rains Assessment (SRA) - ALRMPII and other food sector partners.
- Launching of Index Based Livestock Insurance cover by ILRI and Equity Bank.

#### **Recommendations to DSG and KFSM**

- Short Rains Assessment should be conducted by KFSSG Team to pave way for district intervention measures – KSFSSG/ALRMPII.
- GoK relief food should be consistent and increased from 5 to at least 20 percent to check the emergency food situation in Marsabit north and south districts.
- Fostering of peace should be encouraged within and without district borders. Indeed, disarmament of illegal guns should be encouraged to maintain the declining trend of raids and tribal clashes in the larger district.
- Improve sanitation, especially in diarrhea and vomiting prone areas and as an intervention measure besides availing medics and services accordingly.
- EMOP relief allocation for the delayed December 2009 should be distributed, especially to the pastoralist and fisher folk livelihoods that are still at alarm stage of drought stage.

## **1.0 Environmental indicators**

### **1.1 Rainfall**

- Short rains season ceased in the first week of the month, when few days storms were experienced for an average of 3 to 4 days. Mt Marsabit recorded the highest amount in 5 days at 156mm, followed by Mt. Kulal with 148mm and North Horr registering at 138mm. Loiyangalani location had the least amount of 68mm.
- Weather situation remained cloudy and windless, especially in the fourth week of the month in all ecological zones of the greater district.

### **1.2 Condition of natural vegetation and pasture**

- Availability of forage and pastures varied as high elevated areas had lush pastures while lowlands had maximum to minimal quantities, especially in Loiyangalani location of Marsabit south district, which had the least vegetation cover.
- Forage availability and accessibility is expected to sustain livestock for the next one to two months in most parts of the district while in lowland areas it is expected to last three months.

## **1.3 Water sources and availability**

### **1.3.1 Use of water sources**

- The main sources of water for both livestock and domestic use were adequately recharged in the first week. The water is expected to sustain livestock and households for the next two to three months. Existing water sources for both domestic and livestock use include traditional wells, pans, springs, shallow wells and other short live sources.
- Comparatively, no significant water-borne related disease was noted apart from normal diarrhea cases in Kalacha sample area in Marsabit north district. However, Loiyangalani and El Molo sub-locations reported continuous diarrhea and vomiting cases though no death was reported as a result of availability of drugs.

### **1.3.2 Distances (kms) to water sources**

- Average distances for domestic water use remained fair at an average of 3 to 4 kms while for livestock use decreased from 12 kms to 10 kms compared to long term averages.
- During the month under review there was no water shortage reported in any part of greater Marsabit district.

## **1.4 Emerging issues**

### **1.4.1 Insecurity/ Conflict**

- Security situation fairly improved in most parts of the greater district. Improving security (raids and tribal clashes) can be linked with disarmament of illegal arms in larger Marsabit district.
- Security interventions should be given all attention and empowerment by community, GoK and other stakeholders.

## **1.4.2 Migration**

### **a) Livestock migration**

- Livestock migration was on increasing trend as a result of the cessation of short rains, which were received in most ecological zones of the district. Indeed, few livestock migrations from their homesteads to near dry season grazing areas are observed.
- In the pastoral livelihood of North Horr division, livestock was concentrated in the northern part around Dukana. In Maikona division, livestock concentration was at around Hurri hills and averages distances of 8 and 10 kms from their homesteads.
- Livestock from Agro/pastoral livelihood of Marsabit central and Gadamoji divisions was still at Sololo of Moyale district and mini herds (lactating) were at home.

### **b) Human migration/ displacement**

Human displacement remained minimal in most areas, thus being within normal situation of the year. There was little in migration from grazing areas to urban settlement for search of labor.

## **1.5 Implications on food security**

Unavailability of milk at household level compounded food insecurity situation among pastoral and fisher folk livelihoods. Only six percent of the interviewed households (camel herders) reported an average of one to two litres per day.

## **2.0 Rural economy indicators (Food availability)**

### **2.1 Livestock production**

#### **2.1.1 Livestock body condition**

- Livestock body conditions was good among all species. Healthier livestock condition was favoured by lack of disease incidences in larger Marsabit district.
- Distances to pastures and water decreased fairly to 7 kms on hilly parts but decreased slightly in lowlands from 7 to 5 kms compared to previous four years.

#### **2.1.2 Livestock diseases**

- Contagious Caprine Pleural –pneumonia (CCPP) and worm infestation became endemic among shoats. Generally, there was no significant livestock diseases outbreak reported in most parts of the district thus reflect for positive indication.
- Comparatively, livestock diseases such as enterotoxaemia, worms, bloat and PPR among shoat's and bloat, CBPP, RVF, Triponosmiasis and FMD diseases among cattle and camel species are expected as seasonal infections.

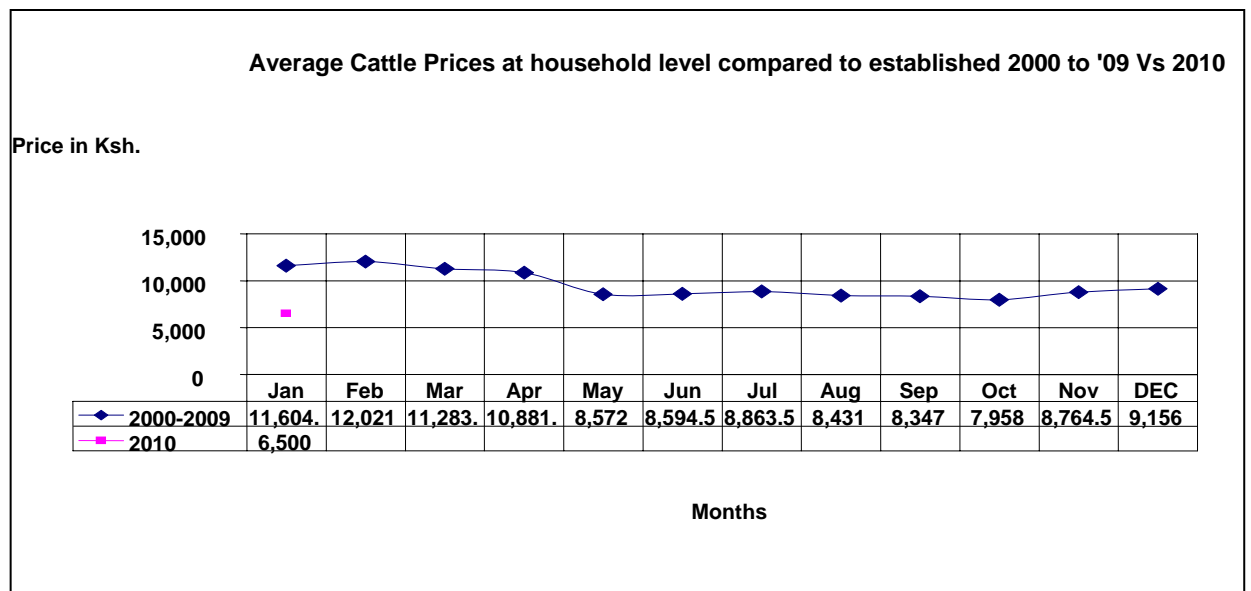
## 2.2 Implication on food security

- Food insecurity situation remained at alert and alarm stages in all three main stay of greater Marsabit district.
- Collapsed livestock prices as a result of low and stable rates negatively affected food security situation at household level, especially among pastoralists and fisher folk communities. Despite this, pastoralists and fisher folk communities were on alarm and emergency/alarm stages and Agro/Pastoral livelihood remained on Alarm stages of the drought cycles.

## 3.0 Access to food

### 3.1 Livestock marketing

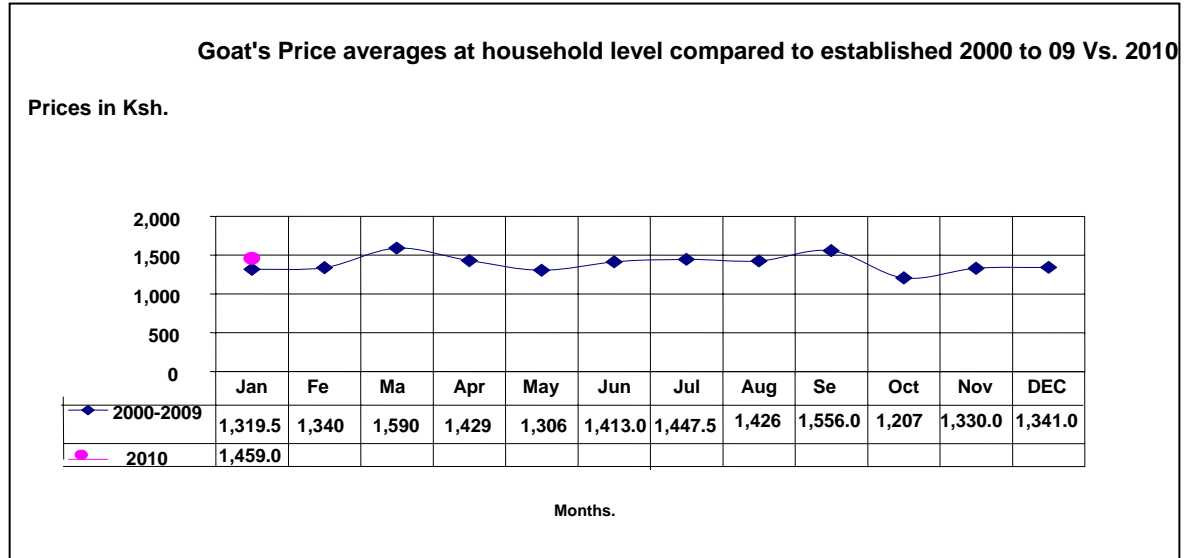
#### 3.1.1 Cattle prices



Ref: N =1 (No. of the sold cattle) by 13 Sentinels x 30 Households

- Cattle prices showed a substantial increase at 43.9 percent compared to the long term mean. This significant downswing trend was attributed to restocking measure, minimal local demand beside by poor price rates.
- Cattle sale rates reduced marginally by 63 percent compared to normal trend. This was affected by uneven prices. Indeed, only one cow was sold in central division of Marsabit central district that fetched Ksh6,500.

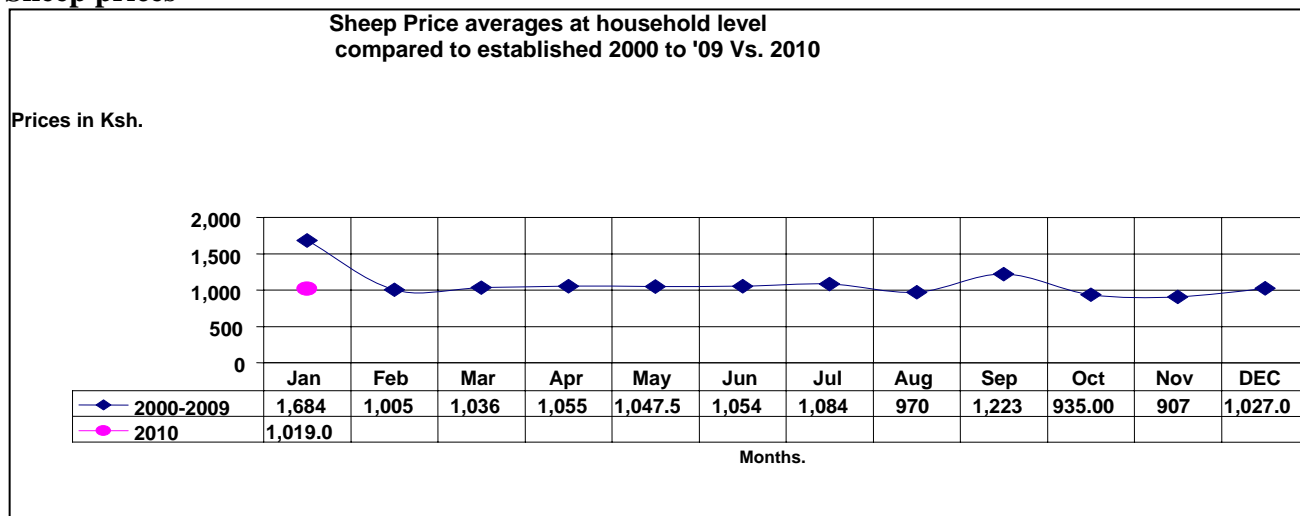
### 3.1.2 Goat prices



Ref: N =55 (No. of sold goats') by 13 Sentinels x 30 Households

- Goat prices increased by 9.6 percent compared to the long term mean year. Similarly, goat sales reduced by 78 percent as result of restocking measures following minimal herd sizes.
- Goat prices were higher in central division of Marsabit central district. Agro/pastoralist livelihood zone recorded Ksh2,333.30 followed by Maikona division of Marsabit north district (pastoralist livelihood zone) at Ksh1,439.30 and North Horr division (pastoralist lv. zone) had the least at Ksh950.

### 3.1.3 Sheep prices



Ref: N =55 (No. of Sheep sold) x 13 Sentinels each by 30 Households

- Sheep prices remained stable compared to established long term averages.
- However, sheep prices slightly increased compared to previous two months as a result of improving body condition and it's expected to be in increasing trend.

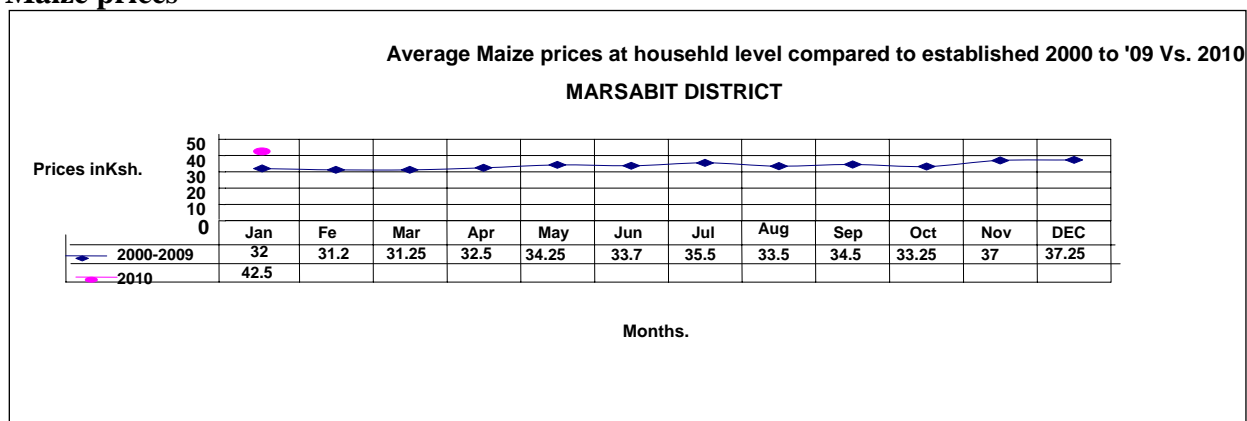
- Higher sheep prices were registered at Maikona division (pastoral livelihood) in Marsabit north district at Ksh1262 followed by Laisamis division in (pastoral livelihood) Marsabit south district at Ksh1066.50 and North Horr division (pastoralist lv. Zone) had the least at Ksh728.80.

### 3.2 Milk consumption

- There was no milk availability reported in most sample area though very little at fora camps among camel herders. This abnormality is attributed by the ending prolonged drought situation.
- With depleted milk availability especially among pastoralist households in the greater Marsabit district, has aggravate increasing food shortages at household level which is expected to improve in the next three month.

### 3.3 Food prices

#### 3.3.1 Maize prices



Ref: N =356 Households purchasing out of 13 sentinels each by 30 households.

- Maize prices increased by 28.83 percent compared to this time of the years 2000 to 2008. Indeed, maize prices have been highly stable due to poor rainfall performance in the previous two to three seasons. These reflect the collapsing meat ratio and hence threaten purchasing powers of pastoral and fisher folk livelihoods and temporarily for Agro/pastoralist livelihood.
- Higher maize prices were recorded in Loiyangalani division of fisher folk livelihood at Ksh50 per kilo, Laisamis division of pastoral (Marsabit south) at Ksh45 and agro/pastoral livelihood Mt. Marsabit in Central and Gadhamoji divisions of Marsabit central district at Ksh32.50.
- Maize prices are expected to remain high in the next two to three months. Farm preparation was minimally exercised by Agro/pastoral livelihoods on Mt Marsabit as about eighty percent embracing it and seventy percent at Hurri hills or else Khat being a cash crop is mostly planted than food crops.
- Very low crops harvests are expected to be harvested in January to early February.

### 3.4 Income

#### 3.4.1 Livestock income

- Livestock sales remained the leading source of income though are on downswing trend. The sales numbers reduced by 48% compared to this time of the year. Low sale were attributed to poor body condition of livestock and collapsed market.
- Livestock sale numbers are expected to increase in a month's time as body conditions are recovering stage.

#### 3.4.2 Other income

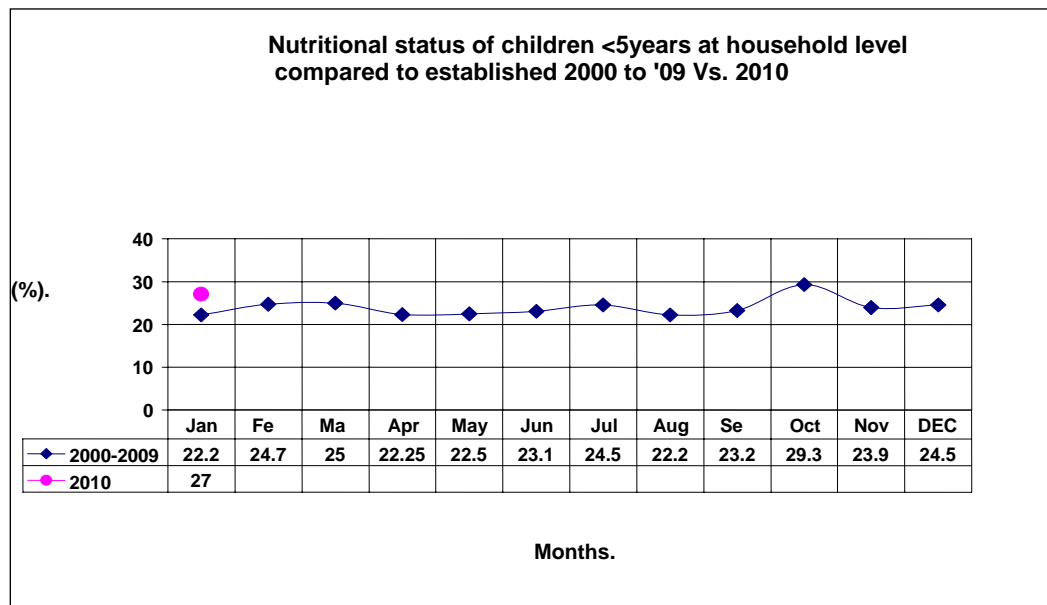
- Other income sources include casual labour where 7 percent of sampled households stating so, few others reporting sale of charcoal, sale of khat (Miraa), formal employment between Ksh200 to 700 and engaging in degrading jobs that fetches between Ksh40 to 150 per day.

### 3.6 Implications on food security

- Despite the significant decrease in independent livestock sales and prices as a result of collapsing terminal market and inflated cereal ratio against meat ratio obviously affirms food implications particularly among pastoral and fisher folk livelihoods and Agro pastoralist at household level.
- Livestock movement from their homesteads to near distances averaging eight to eleven kms as normal for the period of the year.
- Comparatively, inflated farm produce prices, prolonged and frequent drought interval contrarily implicate food security situation thus increasing poverty level than were in previous three to four years.

## 4.0 Human welfare indicators (Utilisation of food)

### 4.1 Nutrition status



Ref: N=3.4 (Avg. No. of children) x 12 Sample sites x 30 Households

- The nutrition status of children below five years declined during the month, with 27% rated at risk of malnutrition compared to 25.7 in December. The decline was attributed to poor feeding habits as a result of lack of milk.
- Higher rates were recorded in Loiyangalani division (fisher folk) of Marsabit south district at 42% and North Horr division (Balesa sample areas) at 51.5% while central and Gadhamoji divisions had the least at 2.7%.
- The rates are expected to remain high due to unavailability of milk in most parts of the district and food shortages at household level.

#### **4.2 Human health**

- The common human diseases during the month under review include diarrhea and vomiting cases in Loiyangalani location among all ages but no death was reported. Malaria and upper respiratory infections (UTR) among children and few adults which were within normal situation of the year.
- Human health condition was affected by lack of food, conditions that make people susceptible to diseases especially among fisher folk community.

### **5.0 Current interventions and coping strategies**

#### **5.1 Non food interventions**

Lottery on cash transfer program in North Horr and Maikona sublocations - Equity Bank/CARE Kenya.

#### **5.2 Food aid**

EMOP food allocation for November 2009 to 106 distributing centers in six larger divisions of Marsabit district targeting 100,383 beneficiaries. Food for Asset/work was only reported in Kalacha sentinel.

#### **5.3 Coping strategies**

The currently applied coping strategies among households include;

- Skipping meals
- sharing of relief
- Purchasing food on credit

This was an indication of a serious food shortages at household level compared to similar period of the previous two years. Agro /pastoral livelihood zone reported increasing sales of firewood/charcoal to urban dwellers.

### **6.0 Recommendations to DSG and KFSM**

- Close monitoring of household food security situation in the coming months to mitigate adverse effects of the prevailing drought, especially in lowland areas.
- Short rains assessment to pave way for the district intervention for seasonal measures.

- Scale up supplementary and therapeutic relief assistance in all affected areas especially to North Horr and Loiyangalani divisions targeting 80% of the children.
- Repairs and maintenance of community boreholes should be given a first priority.
- GoK relief food should be consistent and increase the targeting to support needy households who are not targeted under EMOP and transparency should be observed.
- Promote rainwater harvesting techniques.
- EMOP food aid should equally be extended among fisher folk, pastoralists and Agro Pastoralist livelihood zone should be availed soon.
- Afforestation should be embraced in urban settlements of (Loiyangalani, North Horr, Maikona locations and other lowland areas) where there is plenty of water.
- Food for Asset (FFA) should be emphasised besides EMOP food aid.
- Equitable distribution of resources for community-based food security and income generating activities should be encouraged.
- Proliferation of illegal arms should be checked at all levels to contain tribal clashes and livestock raids in greater Marsabit district.
- Continuous disease surveillance should be emphasised to contain disease outbreaks especially CCBP, CCPP and other wet season infections to areas where livestock are currently concentrated.
- Scale up supplementary and therapeutic wet and dry feeding program to intervene in the increasing malnutrition rates.
- Recruitment of additional nurses should be hastened to attend to continuous diarrhea and vomiting cases in Loiyangalani location and other community dispensaries constructed by CDF and ALRMPII.