

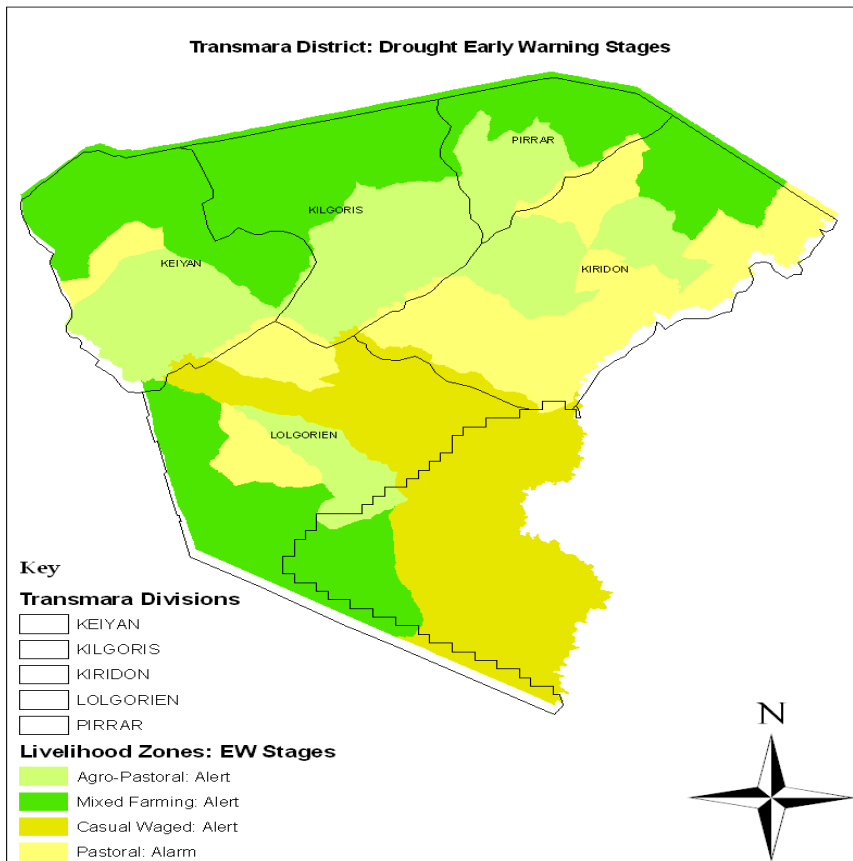


**OFFICE OF THE PRIME MINISTER
MINISTRY OF STATE FOR THE DEVELOPMENT OF NORTHERN KENYA AND OTHER ARID LANDS
ARID LANDS RESOURCE MANAGEMENT PROJECT II**

DROUGHT MONITORING BULLETIN, JANUARY 2010

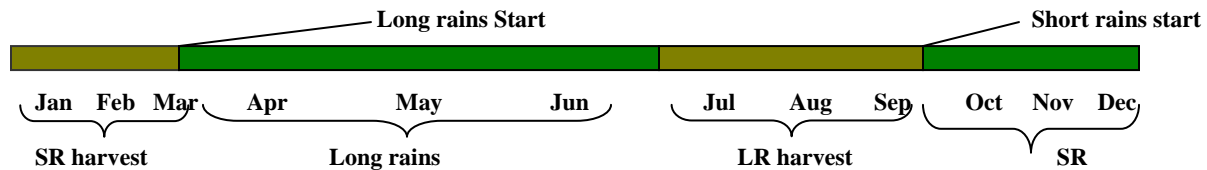
Transmara District

Warning Stages



Livelihood Zone	Warning stage	Trend
Mixed farming	Alert	No change
Agro Pastoral	Alert	No change
Pastoral	Alarm	Worsening
Casual waged labour/ tourism	Alarm	No change

Seasonal calendar



Situation overview

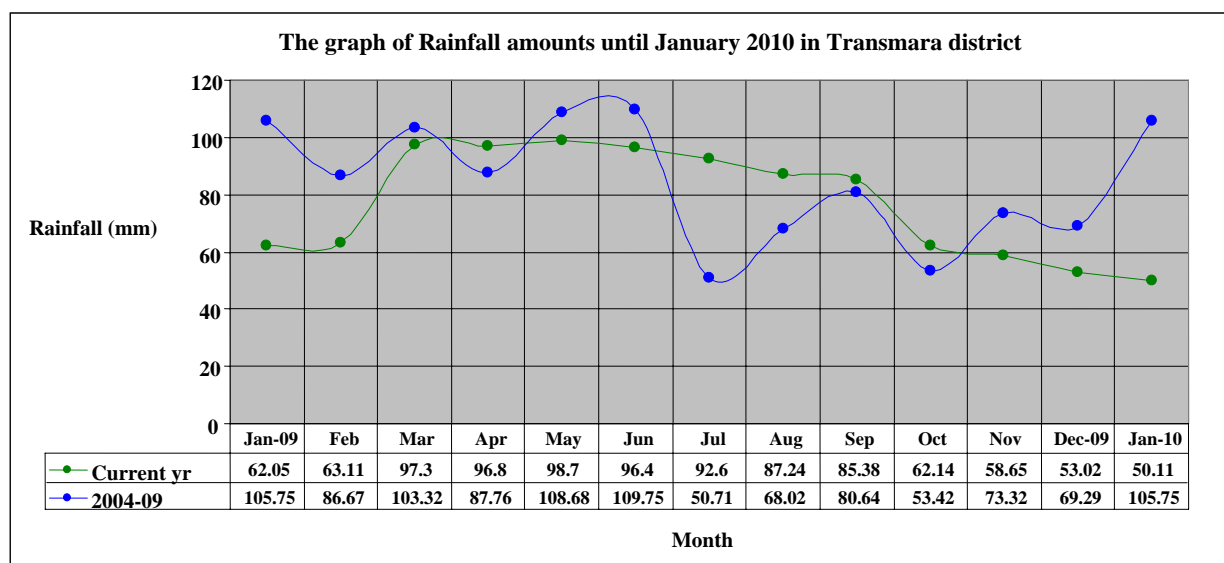
- The district received 50.11mm of rainfall compared to 53.02mm the previous month. The trend was downward and unexpected for the year's norm. This made the water situation worse for livestock, especially in pastoral areas of the district.
- Pasture quantity and quality was poor and on a downward trend. Livestock body condition was consequently poor and deteriorating. Livestock markets were flooded as many people sold their animals to get school fees.
- Maize was at various stages of weeding, tussling and ripening. The maize condition in the field was poor due to unreliable rains. Maize prices in markets were increasing as well as beans prices.
- The nutrition status of children under five deteriorated during the month. The percentage of those rated at risk of malnutrition was 5.25 compared to 4.96 in December. The decline was attributed to drought and milk reduction.

Recommendations to DSG and KFSM

- Additional water projects such as dams and pans need to be established in areas facing difficulties in the extended dry spells and drought periods. Action: Water & ALRMP II.
- Comprehensive community-based peace meetings need to be held. More contingency funds are required to facilitate these at all hotspots in the district.

1.0 Environmental indicators (Stability)

1.1 Rainfall



Rainfall data from Kilgoris rainfall station

- The district received 50.11 mm of rainfall compared to 53.02 mm the previous month. The trend was downward and unexpected for the year's norm. This made the water situation worse for livestock, especially in pastoral areas of the district.
- Onset of the rains was normal but less in intensity. The district had about 4 rainy days on average, same as previous months.
- Mixed farming livelihoods recorded 20% rainfall coverage, same as previous months. Pastoral, Agro-pastoral and Casual waged labour/ tourism livelihoods received an average of about 5% coverage, compared to 10% received in the previous month.
- This distribution was below normal for such a time of the year, and the trend is as well downward.

1.2 Condition of natural vegetation and pasture

- The quality of vegetation/pasture in all livelihood zones changed from fair (during the previous month) to poor.
- The quality of the vegetation in the pastoral livelihood zones was lower compared to that of the other areas. The pasture quantity was low and decreasing compared to the previous month. This was less than that of the same month for a normal year.
- The vegetation quantity in Mixed farming livelihood zones was better than that of pastoral and agro-pastoral livelihoods.

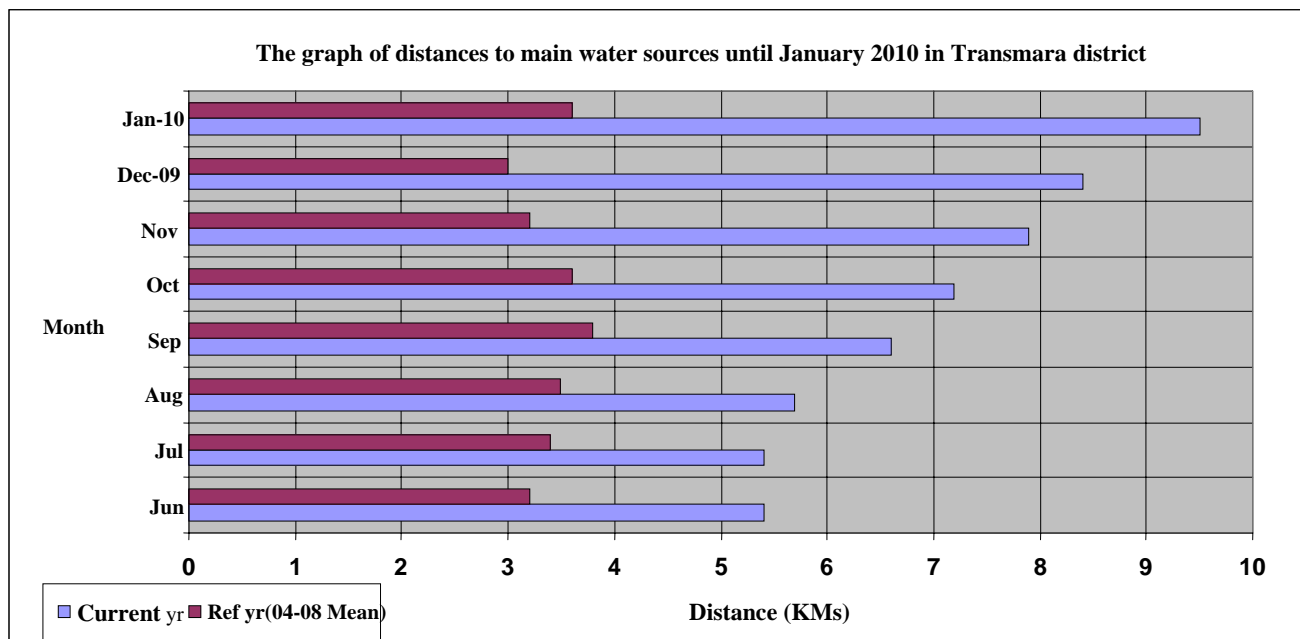
1.2.1 Distance to grazing areas

The average distance from livestock concentration points to main grazing areas in the district was still 7 Kms, similar to that of last month. This was above normal (3.38kms) and was attributed to continuous low rains in the area. The situation was similar to the previous months and is worsening with time.

1.3 Water sources and availability

- Permanent rivers, pans and dams were main sources of water during the month.
- There was pressure at water sources as other sources were dry because of low rainfall amounts received over an extended period of time. The water situation was worse in all livelihoods. This negatively impacted on livestock production and other systems.

1.3.1 Household and livestock access to water



- The average distance (in kms) to main water sources (range) was between 8 and 9. This distance was same for the previous month.
- This distance was higher compared to that of the same month (3.6) for the long term average at such a time of the year. This was due to the dry spell in the area.

1.4 Emerging issues

1.4.1 Insecurity/conflict/human displacement

Incidences of insecurity during the month were low. The DSG has approved funding for a peace meetings at conflict hotspots as more funds were being sought.

1.5 Implications on food security

The low and decreasing rainfall amount reduced water and pasture availability. Milk was less available, affecting households.

2.0 Rural indicators (food availability)

2.1 Livestock production

2.1.1 Livestock body condition

The body condition of cattle, sheep and goats was poor and deteriorating. The situation was similar to that of the previous months. The body condition of livestock in pastoral zones was worse than the rest.

2.1.2 Livestock diseases

There were insignificant cases of livestock disease outbreaks in the district, especially notifiable diseases.

2.1.3 Milk production

- The average milk production per household was low and less than the previous month. This was because of the low amounts of water and pasture. Livestock moved for long distances in search of water and this also affected milk output.
- The quantity of milk production was less than normal for such a time of the year. Mixed farming livelihoods recorded higher milk production per animal than pastoral areas.

2.2 Crop production

2.2.1 Timeliness and condition of various crop production activities

Maize was mostly at past-weeding stage although there were several stages including weeding, tussling and ripening. The crops were not in good condition as rains were limiting at some point.

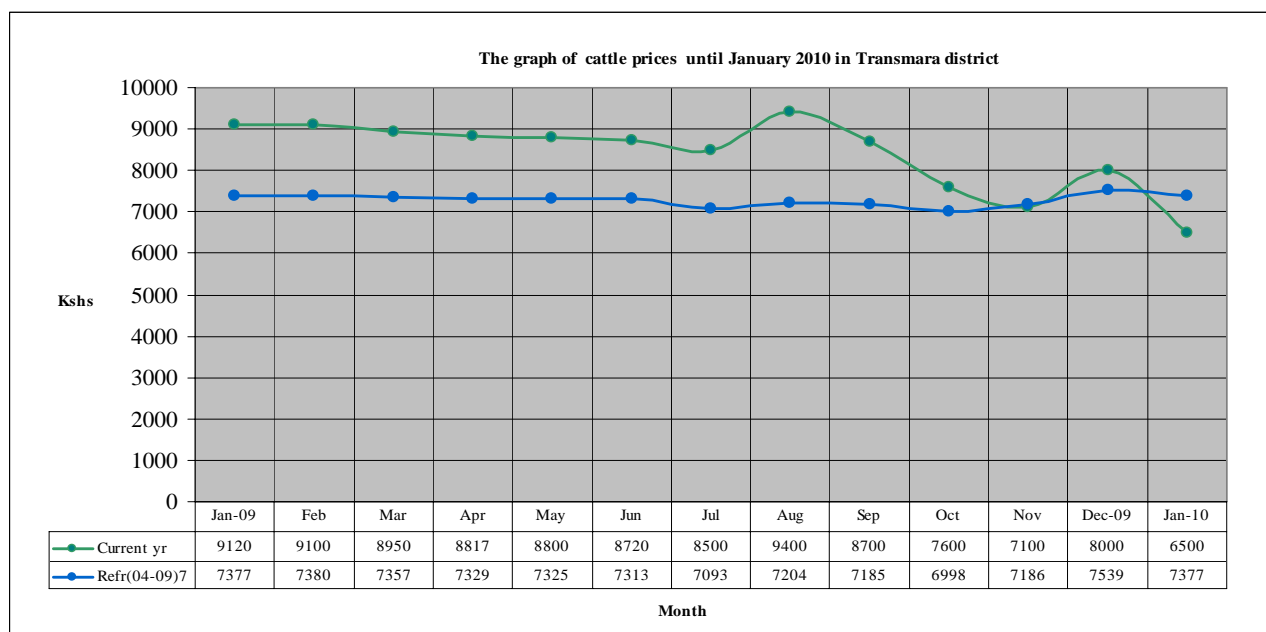
2.2.2 Implications on food security

Food security is threatened since maize harvests were poor and yet the rainfall amounts were below the minimum for the better performance of the current crops.

3.0 Access to food

3.1 Livestock marketing

3.1.1 Cattle prices



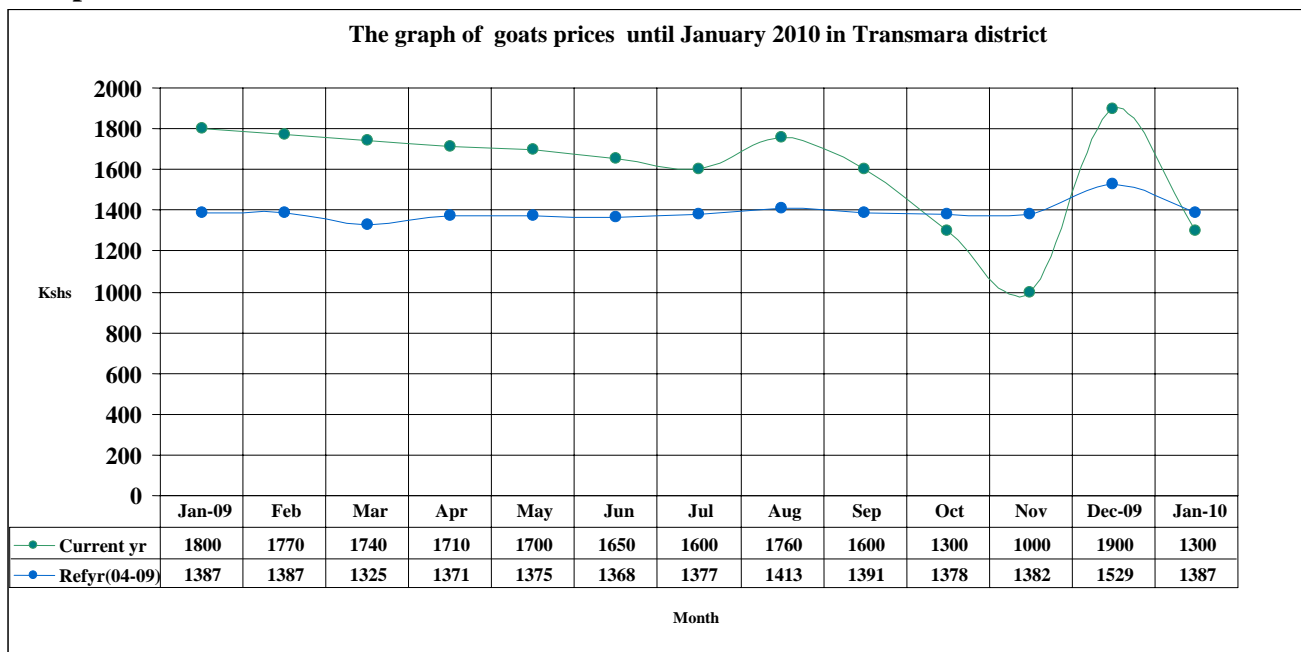
n=341

- The average price for cattle was Ksh6,500 compared to Ksh8,000 the previous month. The decrease was because of the flooded market as most households sold their livestock to raise fees since it was opening time. The poor body condition also

contributed to low prices. The average cattle prices were less than normal for such a time of the year.

- This had a negative effect on food security as less cash was fetched from cattle sales than before. Cattle income, which was majorly depended upon for food purchase was poor.

3.1.2 Goat prices



n=341

- The average price of a goat decreased from Ksh1,900 to Ksh1,300. This was because of the high supply of animals in the market as everybody tried to sell in order to raise fees for their children.

3.2 Milk consumption

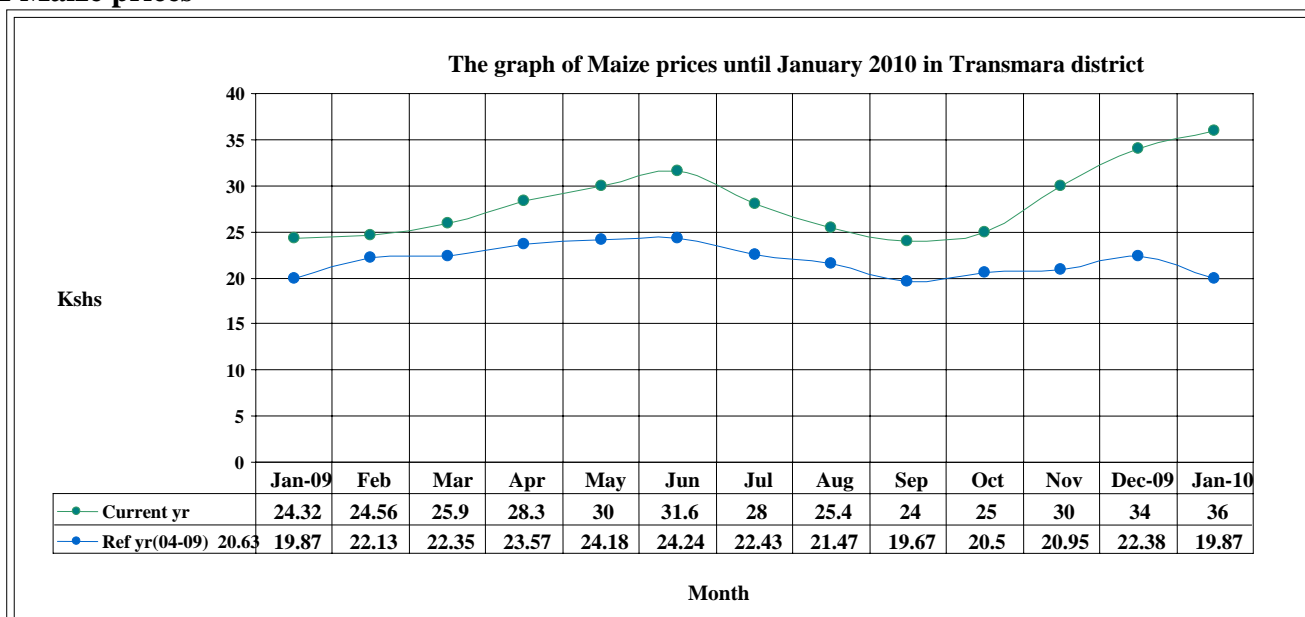
Table for milk consumption

	2009	2009	2009	2009	2009	2009	2009	2009	2009	2009	2009	2009	2010
	Jan	Feb	Mar	Apr	May	Jun	Jul	Aug	Sep	Oct	Nov	Dec	Jan
Everyone	18.05	18.01	17.94	17.60	17.48	17.20	17.20	17.08	16.00	14.00	13.01	11.00	10.00
Only children	36.83	36.92	36.97	37.20	37.50	37.80	37.83	37.96	40.00	42.00	44.20	45.50	46.72
None	4.55	4.61	4.68	4.88	5.20	5.44	5.43	5.52	6.50	7.50	8.25	8.87	9.5

- Milk availability continued to decrease. This affected accessibility of household members to milk. The trend of milk consumption-pattern was downward; similar to previous months. This situation is negative to food security. It is attributed to the drought situation that has led to significant reduction in water and pasture in the district.

3.3 Crop prices

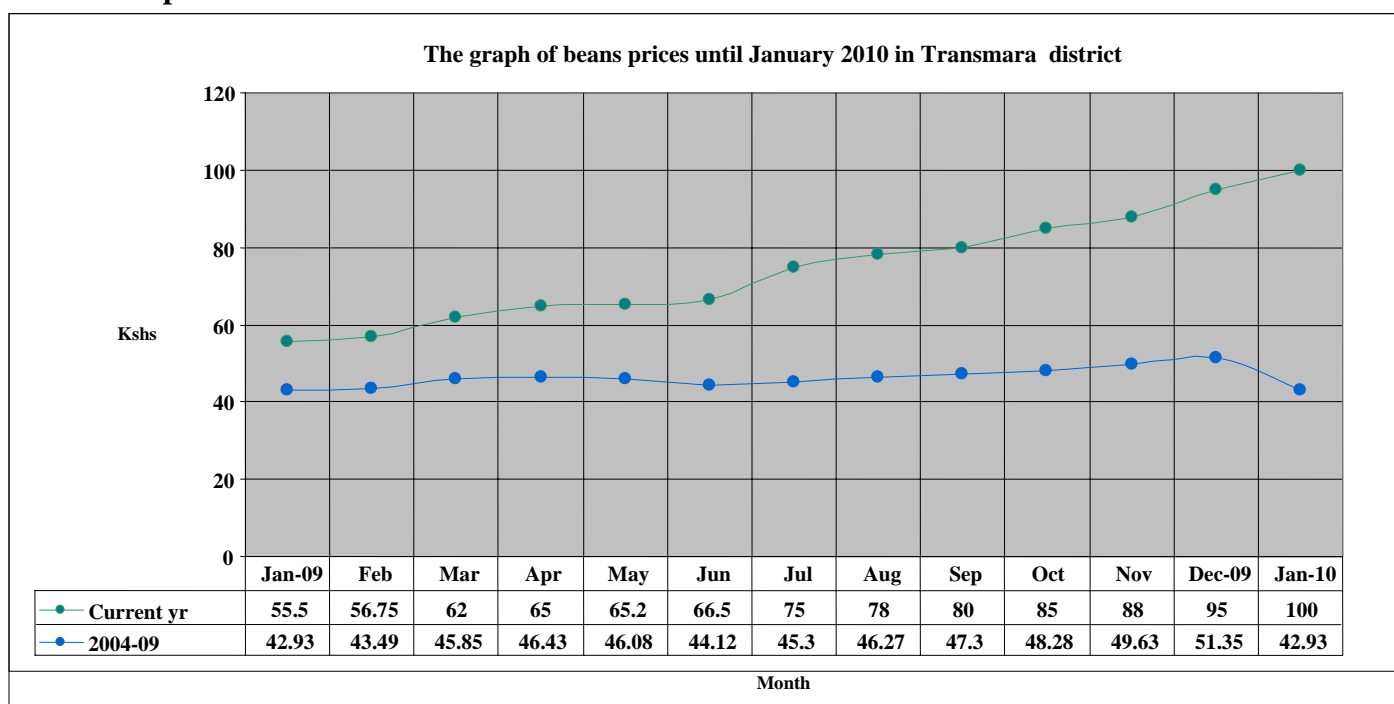
3.3.1 Maize prices



n=341

The average price of maize increased from Ksh34 to Ksh36 per kilo. The increase was due to high demand, whereas the supply of maize was low following poor harvests during the year. Maize price level was above that of the long term mean for the month.

3.3.2 Beans prices



n=341

The average price of beans increased from Ksh95 per kilo to Ksh100. Prices went up due to unavailability of beans in the markets. The upward price trend is expected to continue since no other source such as harvest is near. This was normal at the time of the year.

3.4 Income

3.4.1 Crop Income

Income from crops was not significant since no sales were reported from households/farms.

3.4.2 Livestock income

During the month, income from livestock sales was less than for the previous month. Livestock prices dropped in all livelihoods and the trend was not normal and impacted negatively on food security.

3.4.3 Other incomes

Income sources such as charcoal burning and casual wages sustained most households. Several households had difficulties in survival and earning their living due to limited alternatives of income sources since charcoal burning was being discouraged. Sand harvesting was significant this month.

3.5 Cereal: Meat price ratio

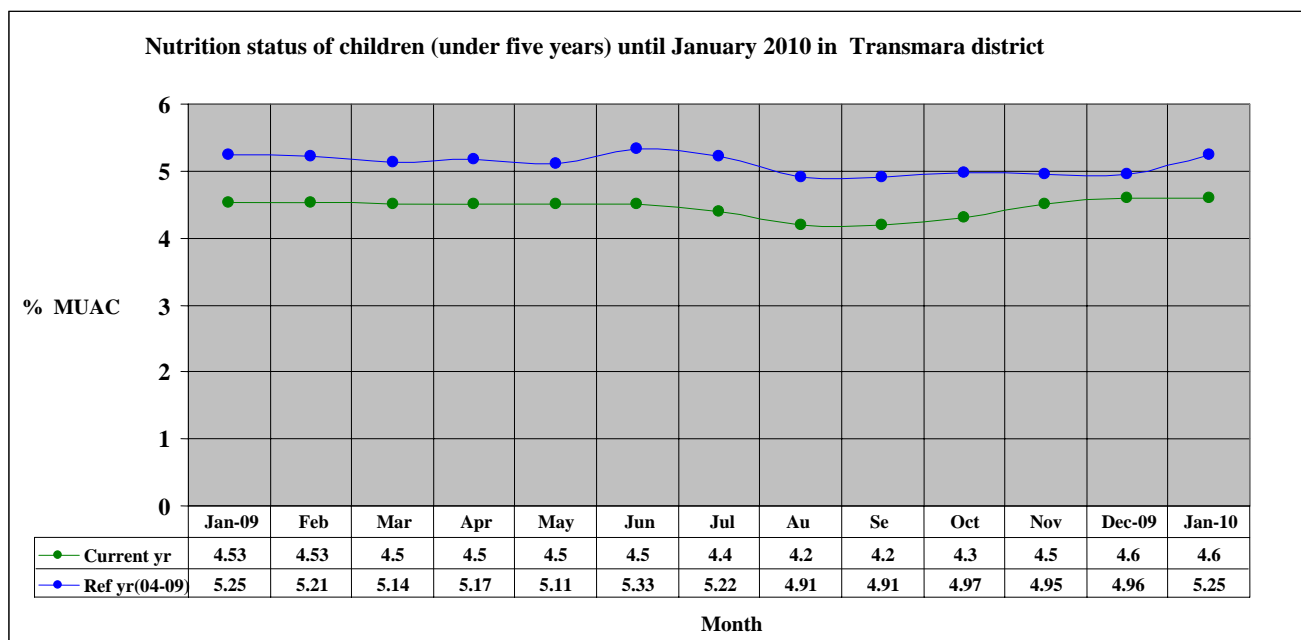
Cereal: Meat Price Ratio in Transmara district in January 2010

Jan 09	106.22
Feb	106.26
Mar	106.38
Apr	106.45
May	106.53
June	106.85
Jul	106.70
Aug	106.50
Sep	106.50
Oct	106.70
Nov	106.97
Dec 09	106.84
Jan 20 10	107.00

The cereal/meat price ratio increased from 106.84 to 107.00. This was because of the decreased livestock prices during the month despite the steadily increasing cereal prices. This had a negative implication on food security as a lot of meat was exchanged for cereals.

4.0 Human welfare indicators (utilisation of food)

4.1 Nutritional Status



n=1,095

The nutrition status of children under five deteriorated during the month. The percentage of those rated at risk of malnutrition was 4.6% same as the previous month. However, the status might worsen if the drought situation persists, especially as milk production declines.

5.0 Current interventions

5.1 Non-food interventions

Conflict management meetings were ongoing, as had been resolved by the DSG, especially in serious conflict hot-spots. The DSG had come up with a workplan for addressing hotspots, where a budget made and submitted for lobbying funds.

6.0 Recommendations to DSG and KFSM

- Additional water projects such as dams and pans need to be established in areas facing difficulties in the extended dry spells and drought periods. Action: Water & ALRMP II.
- Comprehensive community-based peace meetings need to be held. More contingency funds are required to facilitate these at all hotspots in the district.