

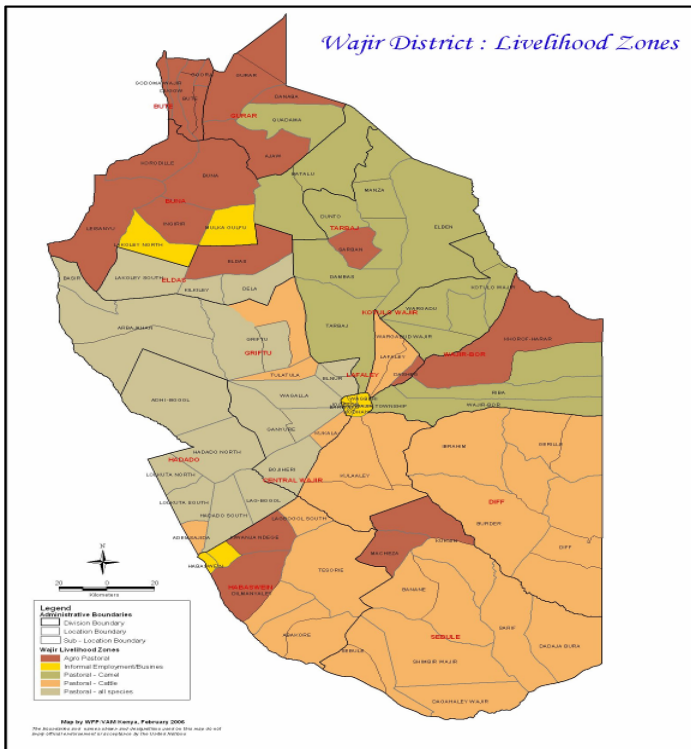


OFFICE OF THE PRIME MINISTER
MINISTRY OF STATE FOR THE DEVELOPMENT OF NORTHERN KENYA AND OTHER ARID LANDS
ARID LANDS RESOURCE MANAGEMENT PROJECT II

DROUGHT MONITORING BULLETIN, JANUARY 2010

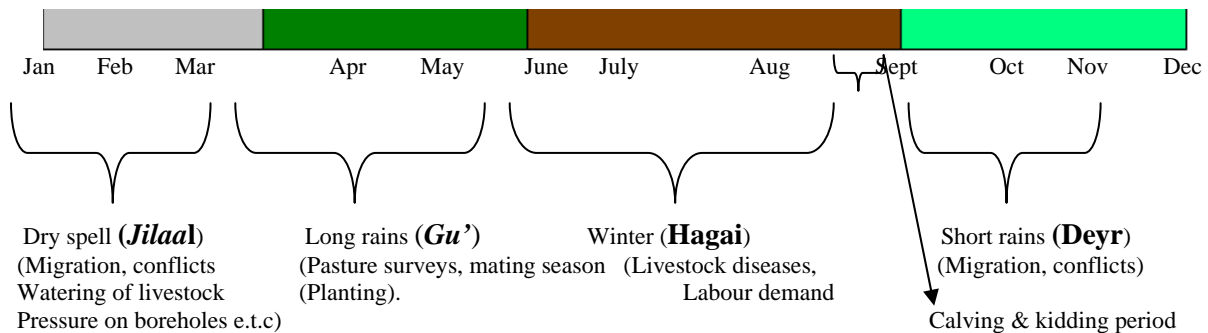
Wajir District

Warning Stages



Livelihood Zone	Warning Stage	Trend
Pastoral – All Species	Alert	Improving
Pastoral – Cattle	Alert	Improving
Pastoral – Camel	Alert	Improving
Agro – Pastoral	Alert	Improving
Informal Employment/Business	Alert	Improving

Seasonal Calendar



Situation overview

- The dry spell (jilaal) season progressed, characterised by high humidity and extreme temperature of approximately 37°C.
- The quality and quantity of pasture, browse and forage deteriorated following the drying of grass, hay and pasture.
- Most of the pans, dams and ponds still had water and the trekking distance of households increased to 8 km compared to 6 km the previous month. However, the quality of the water was poor following the impurities and waste substances accumulated in the last rains season.
- Livestock body condition continued to improve despite wasting during the last successive droughts.
- Human/wildlife conflicts were reported, especially in farms while birds, pests and weevils affected crops grown in Agro-pastoral areas.
- Diseases like PPR, CCPP, infestation of ticks and mosquitoes have been reported especially in low lands areas of Diff, Habaswein, Hadado, Tarbaj and Bute.
- Livestock prices improved due to the fair body condition, with the price of camels increasing from Ksh8,940 to Ksh10,707, cattle from Ksh7489 to Ksh8762 and goats from Ksh1,461 to Ksh1,501 compared to the previous month. The supply of livestock for sale was high as pastoralists sold them to raise school fees.
- Consumption and production of milk increased slightly but a bottle of 750ml of camel milk sold at Ksh40 to 50 for camels, Ksh80 to Ksh100 for goats and cattle at Ksh50 to Ksh60.
- The main causes of morbidity and mortality in the district remained malaria, URTI, intestinal worms and malnutrition. Cases of malaria and diarrhea increased in health facilities due to the growth of bushes resulting in breeding of mosquitoes.
- The nutrition status of children below five years (based on MUAC<135mm measurement) improved slightly, with the percentage of those rated at risk of malnutrition reducing to 27.1% from 27.5% the previous month. The improvement was attributed to improvement in supply of milk and supplementary intervention by Save the Children UK.
- The area was relatively calm in regard to security but there were some persisting concerns such as human abductions, carjackings and stock theft along the Wajir West – Moyale borders. Conflicts over water were also reported, especially at Dela Dam over watering of animals.
- Food prices were high as the district relies on food brought in from Wajir town. A kilogram of rice sold at Ksh90, beans Ksh80, sugar Ksh100 and maize Ksh58. The majority of the population cannot afford these prices because their purchasing power has been greatly reduced by loss of livestock. This has in turn led to 75 percent of the population totally relying on food aid provided by WFP through ALDEF-Kenya.

Recommendations to DSG and KFSM

- Improved coverage of OTP and SFP with active case finding(SCUK, Merlin and Mophs/moms).
- Infant and Young Child Feeding promotion program through (Mphs, Moms, SCUK and MERLIN.)
- Prevention and response preparedness for livestock disease outbreaks. (VSF, Oxfam, Mold, ALRMP)

- Support for skimming/condensing/drying milk for use in times of drought as during the rainy season, milk is often wasted due to lack of milk processing plant.(Scuk, Merlin, Mphs, Alrmp)
- Advocacy for preservation of traditional grazing areas, creation of awareness of grass-planting and investment in alternative livelihoods and food types. (ALRMP)
- Up scaling of existing small-scale farms through bucket-irrigation and support to stockiest of seeds and tools. (Alrmp, MOA).
- Provision of Long Lasting Insecticides Treated Net.(LLITN, Mphs, SCUK)
- Spraying of households with vectors/chemicals especially in cesspool, stagnant water, bushes and debris to reduce mosquito menace. (MPHS,SCUK) Natural resource management and sensitise communities on wet/dry grazing pattern.
- Strengthening of peace conflict mechanism, especially along Wajir – Marsabit-Isiolo border. (Wpda, OOP, Alrmp).
- Restocking programme especially cattle and shoats.(Action MoLD/OXFAM, VSF/Alrmp/KRCS)
- Provision of funds for mass vaccination of small stocks against PPR and CCPP in the 4 districts. (Livestock, Vsf, Oxfam, Alrmp)
- Nutritional intervention, especially in the worst affected areas like Wajir bor, Kutulo, Hadado, Eldas and Buna through SFP/OTP as a recovery strategy to supplement milk. (SCUK, Mophs, Alrmp).

Current interventions

The following interventions are ongoing-

Food aid

- Blanket supplementary program supported by WFP.
- Nutritional supplementary program by Save the Children UK in Wajir East and South.
- Hunger safety net program (HSNP) by MSDNK&OAL through Oxfam. EMOP by world food program/GOK through the lead Agency Aldef-Kenya and implementing agency Wasda.
- Blanket feeding programme for under five, pregnant and lactating mothers by WFP/Save the children/Aldef.

Non – food interventions

- School feeding program supported by WFP.
- Support to grannies by the Catholic missions.
- OVC support through Islamic institutions like Shallete and Madarasatul Al itisam.
- Provision of Agricultural seeds by the ministry of Agriculture and Arid land resource management project.
- Afforestation by the Forestry department.
- Mobile school by ALRMP & MOE.
- Mobile VCT services and TB outreach program supported by APHIA II
- Water and sanitation by Oxfam GB.
- HSNP(Hunger and safety net program).
- Continuous health education by the ministry of public and medical services.
- Sports activity through constituency youth funds.

1.0 Environmental indicators (stability)

1.1 Rainfall

Little showers were received during the month under review, especially in Griftu, Tarbaj, Bute and Diif. Generally, the amounts of rainfall received during the last season were below average especially in parts of Wajir west like Basir, Arbajahan, Tarbaj and Khorof Harar in Wajir East.

1.2 Condition of natural vegetation and pasture

The availability and quality of pasture, browse and forage improved all over, except in Arbajahan, Tarbaj and Gunana. However, the grass and shrubs were drying as the dry season progresses.

1.3 Water source and availability

Water availability improved and many ponds and pans impounded water. The livestock moved away from boreholes and were in the wet season grazing areas. Most of the livestock now depended on ponds, streams and lagas for watering purposes. Some settlements were being water trucked since surface water, especially in pans and dams, was not available.

1.3.1 Household access to water

Water accessibility at household level has improved, though the quality was poor due to dissolved solids in the runoff. Contamination of water with e-coli and other impurities was common due to livestock deaths in the last dry season.

1.3.2 Livestock access to water

Accessibility of water improved and livestock depended on ponds and pans that had impounded water. The livestock had moved away from boreholes and were in the wet season grazing areas. The trekking distance for water reduced to less than 10 km, especially between the grazing areas and water sources.

1.4 Emerging issues

- Human/wildlife conflicts were reported and caused destruction of crops.
- Two international agencies in the district, Merlin and OXFAM GB, will phase out programming in 2010 and there will be need to continue support to the Government ministries and especially in nutrition, health and food security sectors.
- Increase in vectors and other pests, especially in Agro-pastoral areas.
- Increase in commercial food prices.
- Closure of Kenya-Somalia boarder leading to increase in commercial food prices like sugar.
- Poor latrine coverage, leading outbreak of diarrhoeal diseases.
- Emerging diseases such as cancer, which is widespread in the area.

1.4.1 Insecurity/conflict/human displacement

- The area was relatively calm in terms of security, despite some persisting concerns such as human abductions, carjackings and stock theft along the Wajir West – Moyale borders.
- Human/ wildlife conflicts were reported, particularly hyena attacks in Garseqoftu Location of Wajir west District.

- Conflicts over water have also been reported, especially in Dela Dam between two communities.

1.4.2 Migration

There was migration of livestock to areas that received good rains, especially towards the South and North. Migration of livestock at this time was an indicator of poor season since pastoralists normally do not migrate if the rains are good in all the areas.

1.4.3 Implications on food security

- Closure of Kenya-Somalia border will affect the purchasing power of the community since the prices of essential commodities increased. The poor rains have affected the general food security of the pastoralist and agro-pastoralist.

2.0 Rural economy indicators (Food availability)

2.1 Livestock production

Livestock production was still low following the drought stress. However, production was expected to improve with improved pasture and water availability.

2.1.1 Livestock body condition

The Livestock body condition was fair and continued to improve, though their bodies were wasted during the successive droughts.

2.1.2 Livestock diseases

Diseases such as PPR, CCPP, infestation of ticks and mosquitoes were reported, especially in lowland areas of Diff and Habaswein divisions.

2.1.3 Milk production

Milk consumption and production improved compared to the previous month.

2.2 Crop production

Crops, including maize, millet and sorghum, had not yet been harvested while some were prematurely harvested due to inadequate rains and infestation of weevils. Water melons were widely harvested, especially in Wajir central, and offered alternative source of income to small-scale farmers.

2.2.1 Timeliness and condition of crop production

Little harvest is expected especially in areas with adequate rain like Bute and Qanjara. Infestation of birds and weevil will affect the harvest.

2.2 Pests and diseases

Birds and weevil affected crops grown especially in Qanjara and Eldas. There was high infestation of pests that were clearing vegetation, especially tree leaves.

Crop pests and diseases were reported especially in crops planted earlier.

2.2.3 Harvests

Water melons were being harvested and sold, especially in Wajir central, and were a source of income to small-scale farmers. However, there were no other harvests since crops had not matured.

2.2.4 Implications on food security

The expected harvest will slightly improve food security, especially in the agro-pastoral livelihood zone.

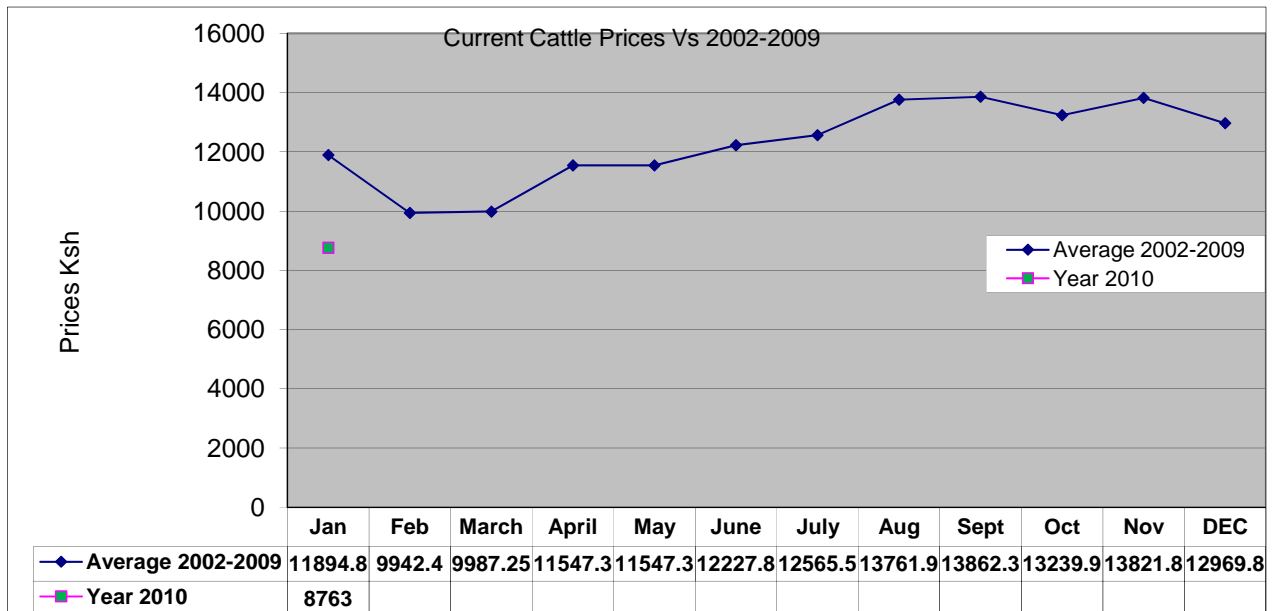
3.0 Access to food

3.1 Livestock marketing

The prices for livestock increased slightly in all the species due to their fair body condition. The sales rate for livestock as pastoralists sought alternative sources of money to pay school fees.

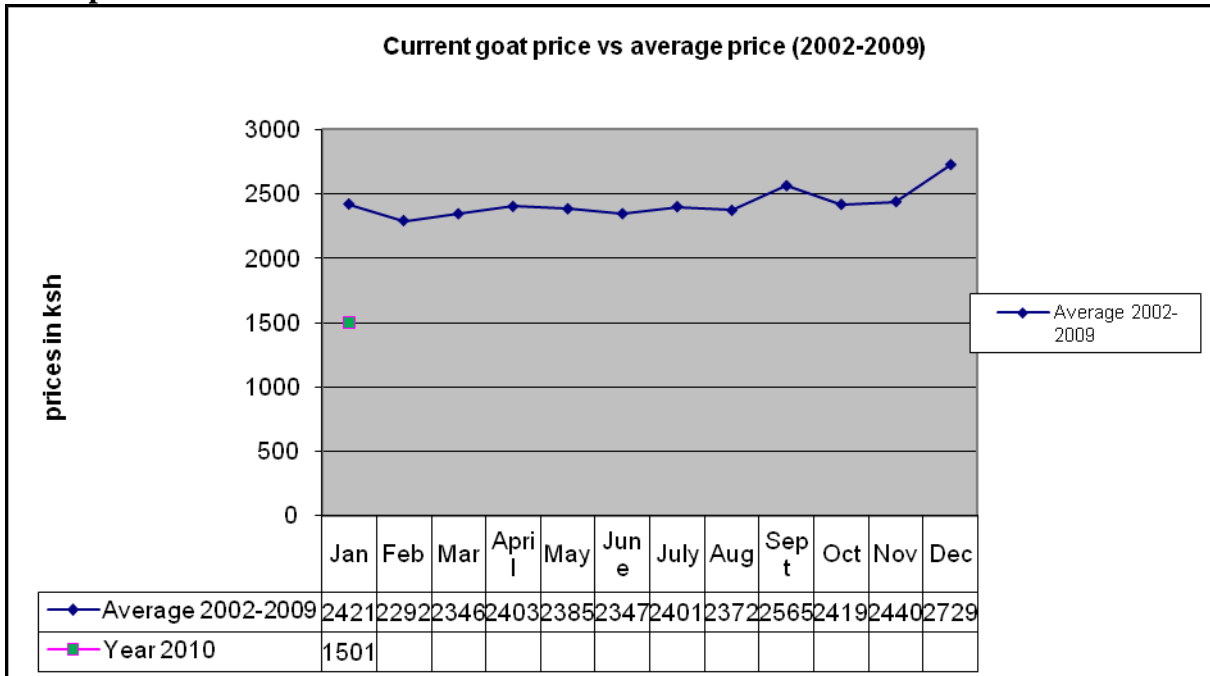
3.1.1 Cattle prices

The graph below indicates cattle long term mean prices against current year 2010



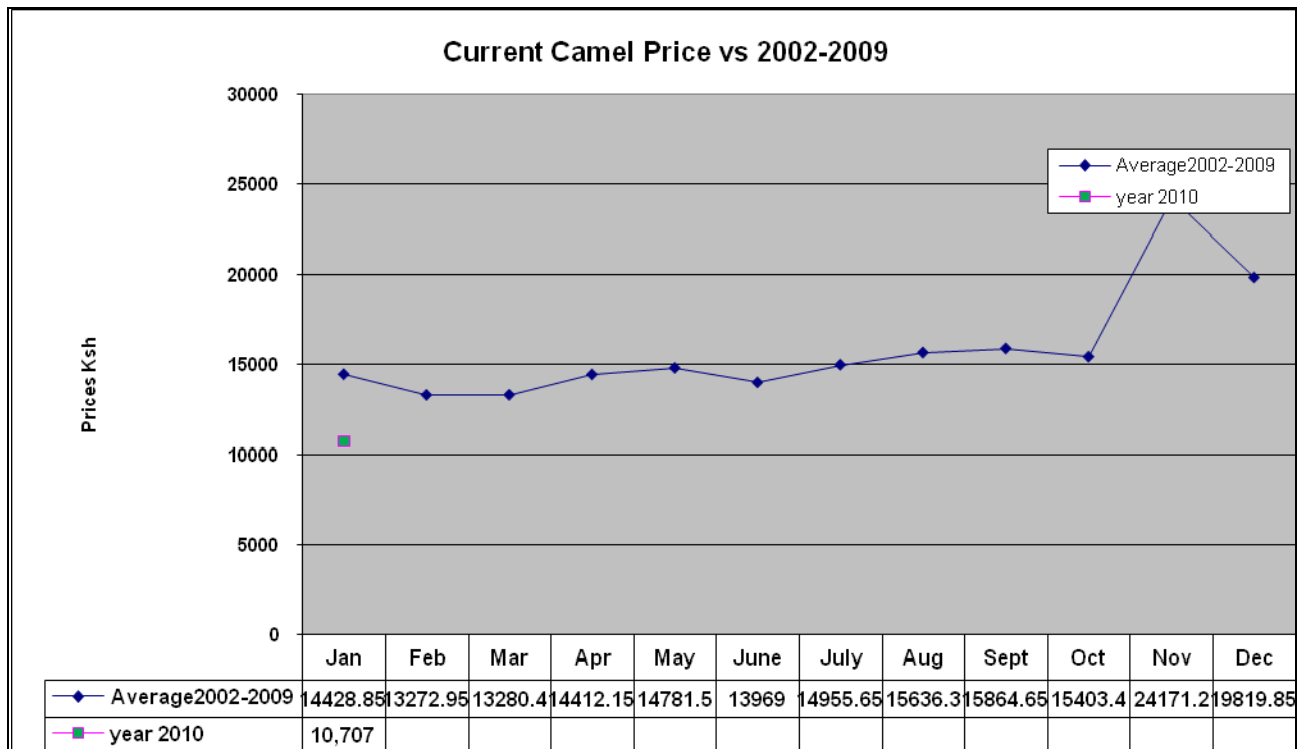
Livestock prices continued to improve, especially for cattle as their body condition continued to improve. The prices increased compared to the previous month from Ksh7489 to Ksh8763.

3.1.2 Goat prices



Goat prices increased compared to the previous month due to improvement in their body condition. The average price was Ksh1501 compared to Ksh1461 the previous month.

3.1.3 Camel prices



The average camel prices increased slightly compared to previous month from Ksh8940 to Ksh10,707 . Camels are exported to Ethiopia and Somalia, leading to increased demand. Camel meat is consumed more compared to any other livestock meat.

3.2 Milk consumption

Milk availability and consumption reduced compared to the previous month. However, the price was fair compared to the previous years.

3.3 Crop prices

3.3.1 Maize prices

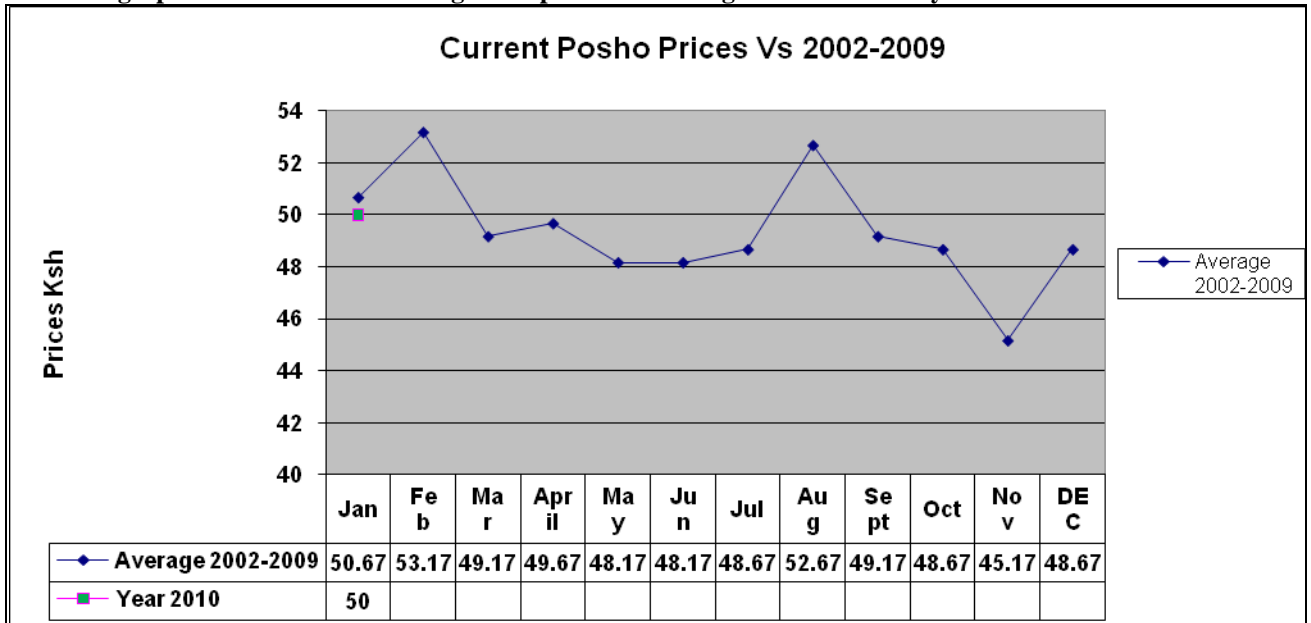
The graph below indicates maize long term mean prices against current year 2010



The prices of maize increased compared to the previous month. The commodity is issued as relief food but demand is high since it's the most common cereal used by the pastoralists due to its local availability and affordability. The average price was ksh40 per kilo.

3.3.2 Posho (maize meal) prices

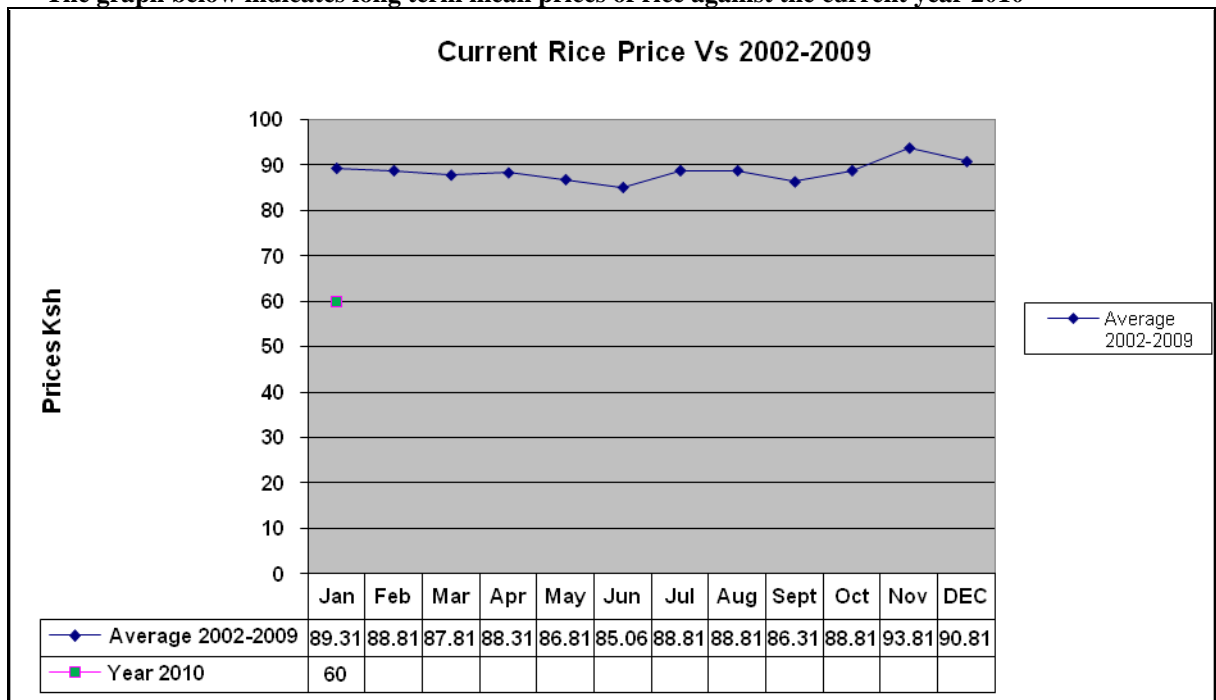
The graph below indicates the long mean price of Posho against the current year 2010



Most commercial food prices continued to escalate due to poor road network, global inflation and low purchasing power. Average posho prices stood at Ksh50 and the commodity was mostly consumed locally.

3.3.3 Rice prices

The graph below indicates long term mean prices of rice against the current year 2010



The price of rice increased slightly compared to the previous month. Various types of rice were sold in the local markets but the average price was Ksh90 per kg.

3.4 Income

3.4.1 Crop income

Sale of vegetables and other kitchen farming crops was an alternative source of income for small-scale farmers, especially in Wajir central.

3.4.2 Livestock income

The main source of income was sale of livestock but price fluctuation, low demand and poor terminal market had a negative set back to the pastoralist community.

3.4.3 Other income

Sale of miraa, quarry products and daily casual labour, especially planting, were the other sources of income in the district. Charcoal burning and fetching of firewood was an alternative source of income, especially in Small business/informal livelihood zone including Makaror, Ganyurey, Jowhar, Dotha and other peripheral areas of Wajir town.

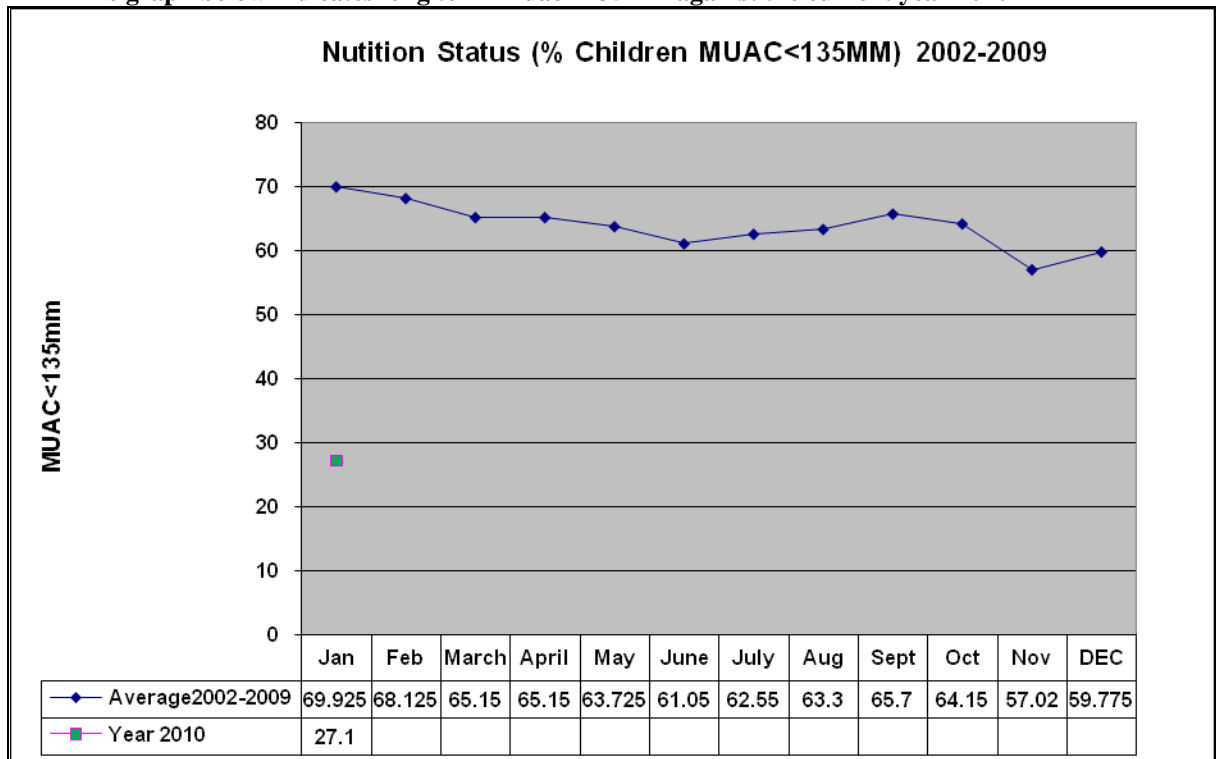
3.5 Implications on food security

The main source of income was sale of livestock but poor price, low demand and poor body condition all had a negative set back to the pastoralist community.

4.0 Human welfare indicators (utilisation of food)

4.1 Nutrition status

The graph below indicates long term Muac <135mm against the current year 2010



The nutrition status of children below five years (based on MUAC<135mm measurement) improved slightly.

The percentage of those rated at risk of malnutrition reduced to 27.1% from 27.5% the previous month. The trends is improving following the availability of milk, especially at the household level in the pastoral areas.

However, in small settlements and urban areas, milk was still scarce as the prices kept increasing.

4.2 Human health

- The main causes of morbidity and mortality in the district remained malaria, URTI, intestinal worms and malnutrition. Cases of malaria and diarrhea increased in health facilities due to the growth of bushes resulting in breeding of mosquitoes.
- Increase of cancer cases is a major concern requiring intensive research as several deaths have been reported in the district.

4.3 Flagged areas

Cases of kwashiorkor subsided but Diif area was flagged for schistosomiasis. Areas along the Wajir –Somalia border were placed under security alert following fears of Al-Shabaab intrusion.

5.0 Current interventions

5.1 Non-food intervention

- Sports activities through youth funds.
- Mobile VCT services supported by APHIA II.
- Water and sanitation by Oxfam GB.
- HSNP(Hunger and safety net program).
- Continuous health education by the Ministry of Public Health and Medical Services.

5.2 Food aid

- FFA-food for asset program by WFP through partner agency.
- Nutrition support in OTP/SFP by SCUK and MERLIN
- EMOP relief food distribution by WFP through lead agency, ALDEF-K and implementing partners (WASDA).
- Basic relief support from OOP through then local administrations.

5.3 Coping strategies

- Reduction in number of meals per day.
- Purchasing of food on credit.
- Reliance on remittances.
- Charcoal burning and sale of firewood.
- Sale of gum and resins, mirra and quarry products such as white wash.
- Sale of livestock for weddings/school fees and fattening of livestock, especially bulls, for alternative source of income.

- Borrowing food on credit.
- Remittances.

6.0 Recommendations to DSG and KFSM

- Improved coverage of OTP and SFP with active case finding (SCUK, Merlin and Mophs/moms).
- Infant and Young Child Feeding promotion program through (Mphs, Moms, SCUK and MERLIN.)
- Prevention and response preparedness for livestock disease outbreaks. (VSF, Oxfam, Mold, ALRMP)
- Support for skimming/condensing/drying milk for use in times of drought as during the rainy season, milk is often wasted due to lack of milk processing plant.(Scuk, Merlin, Mphs, Alrmp)
- Advocacy for preservation of traditional grazing areas, creation of awareness of grass-planting and investment in alternative livelihoods and food types. (ALRMP)
- Up scaling of existing small-scale farms through bucket-irrigation and support to stockiest of seeds and tools. (Alrmp, MOA).
- Provision of Long Lasting Insecticides Treated Net.(LLITN, Mphs, SCUK)
- Spraying of households with vectors/chemicals especially in cesspool, stagnant water, bushes and debris to reduce mosquito menace. (MPHS,SCUK) Natural resource management and sensitise communities on wet/dry grazing pattern.
- Strengthening of peace conflict mechanism, especially along Wajir – Marsabit-Isiolo border. (Wpda, OOP, Alrmp).
- Restocking programme, especially cattle and shoats.(Action MoLD/OXFAM, VSF/Alrmp/KRCS)
- Provision of funds for mass vaccination of small stocks against PPR and CCPP in the 4 districts. (Livestock, Vsf, Oxfam, Alrmp)
- Nutritional intervention, especially in the worst affected areas like Wajir bor, Kutulo, Hadado, Eldas and Buna through SFP/OTP as a recovery strategy to supplement milk. (SCUK, Mophs, Alrmp).