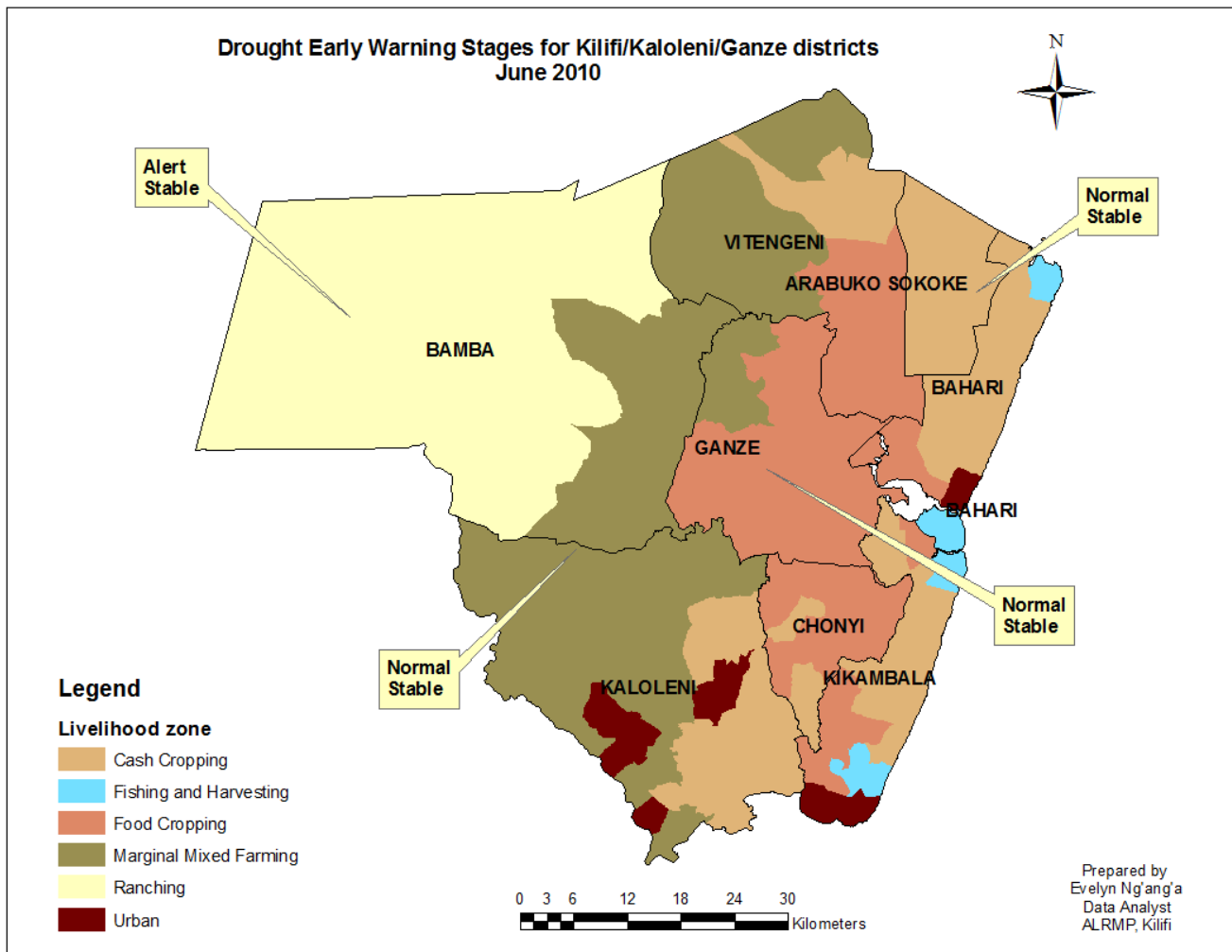




**OFFICE OF THE PRIME MINISTER
MINISTRY OF STATE FOR THE DEVELOPMENT OF NORTHERN KENYA AND OTHER ARID LANDS
ARID LANDS RESOURCE MANAGEMENT PROJECT II**

DROUGHT MONITORING BULLETIN, JUNE 2010

KILIFI/KALOLENI/GANZE DISTRICTS



Seasonal Calendar

<ul style="list-style-type: none"> ▪ Short rains harvests ▪ Short dry spell 			<ul style="list-style-type: none"> ▪ Planting/Weeding ▪ Long rains 			<ul style="list-style-type: none"> ▪ Long rains harvests ▪ A long dry spell 			<ul style="list-style-type: none"> ▪ Short rains ▪ Planting/weeding 		
Jan	Feb	Mar	Apr	May	Jun	Jul	Aug	Sept	Oct	Nov	Dec

Situation overview

- 96.3mm of rainfall was recorded for 7 days this month compared to the previous month's 76.2mm for an average 8 days. It was quite well distributed in the three districts except Mnagoni, Goshi and Kavunzoni areas that did not receive adequate rain. It was mainly characterized by heavy down pours which fell throughout the month.
- There was a general improvement in the quality and quantity of pasture and natural vegetation this month owing to the rains. However, a slight increase in distances to grazing areas was recorded mainly due to the long distances in the ranching zone.
- Pans and dams were the most relied upon water sources this month similar to last month for both livestock and domestic use. These sources continued to fill up with water and therefore access to water by both livestock and humans was improved.
- A medium-sized bull was selling at Ksh7819 similar to last month's price of Ksh7820. The price of a similarly-sized goat was Ksh1670, up slightly from Ksh1621 recorded last month. The livestock market continued to stabilize this month and is expected to do even better in the months to come.
- A kilogram of maize was selling at Ksh27.0 compared to Ksh30.0 last month. Maize prices have stabilized and are almost equal to those in a normal year. Those of beans are yet to stabilize as a kilogram of beans was selling at Ksh75.0, a negligible increase from Ksh73.0 recorded last month. These were still above the normal prices expected at this time of the year.
- The average daily wage rate was Kshs 145.5, a slight decrease from Kshs 148.8 recorded last month.
- The proportion of children at risk of malnutrition remained the same at 8.5% similar to last month.
- The early warning stage for the 3 districts is normal with a stable trend.

Current interventions

Non-food interventions

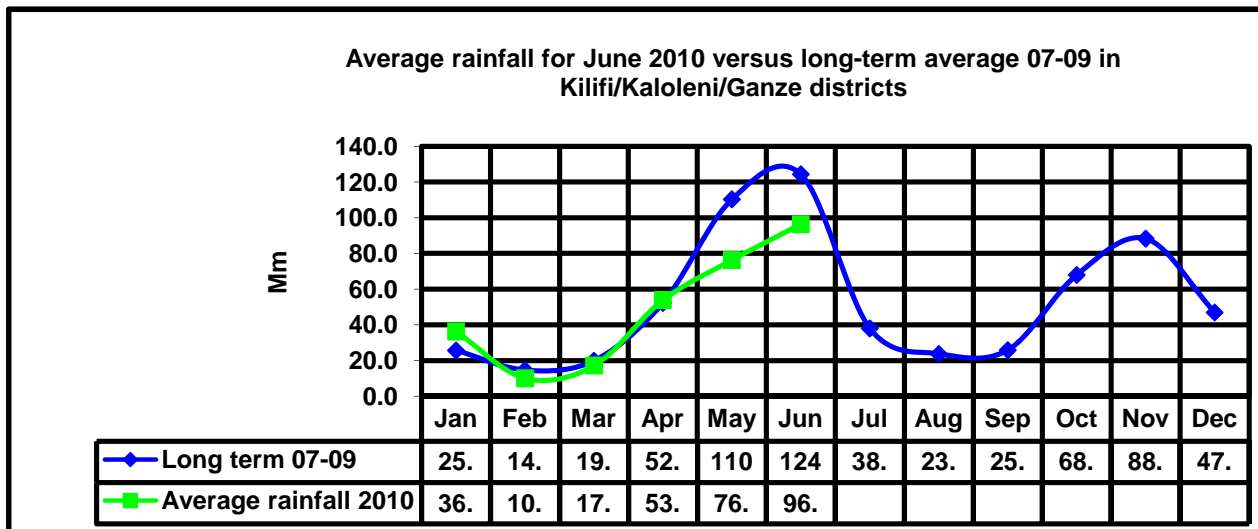
- Coast Rural Support Program (Sombeza) is supporting bee-keeping in Bamba division.
- Support to crop production through provision of 5 Amiran irrigation kits by ALRMP.
- Mahumbo water pan is being excavated through joint efforts between World Vision, and ALRMP.
- ALRMP has distributed 4000 cassava cuttings and 3500 sweet potato vines to Ganze district.
- Promotion of tree nursery establishment in 16 locations through provision of equipment by ALRMP and KFS.

Recommendations to DSG and KFSM

- Continued surveillance and management for Cholera out-break in Kaloleni District where 7 deaths were reported.
- Awareness creation among farmers on post harvest management by the DAO Kilifi, Ganze and Kaloleni.
- Surveillance and awareness creation of aflatoxin in maize.
- Control of wild life by KWS to reduce wild life human conflict and crop destruction.
- Awareness creation on sanitation and water treatment to curb water-borne diseases.

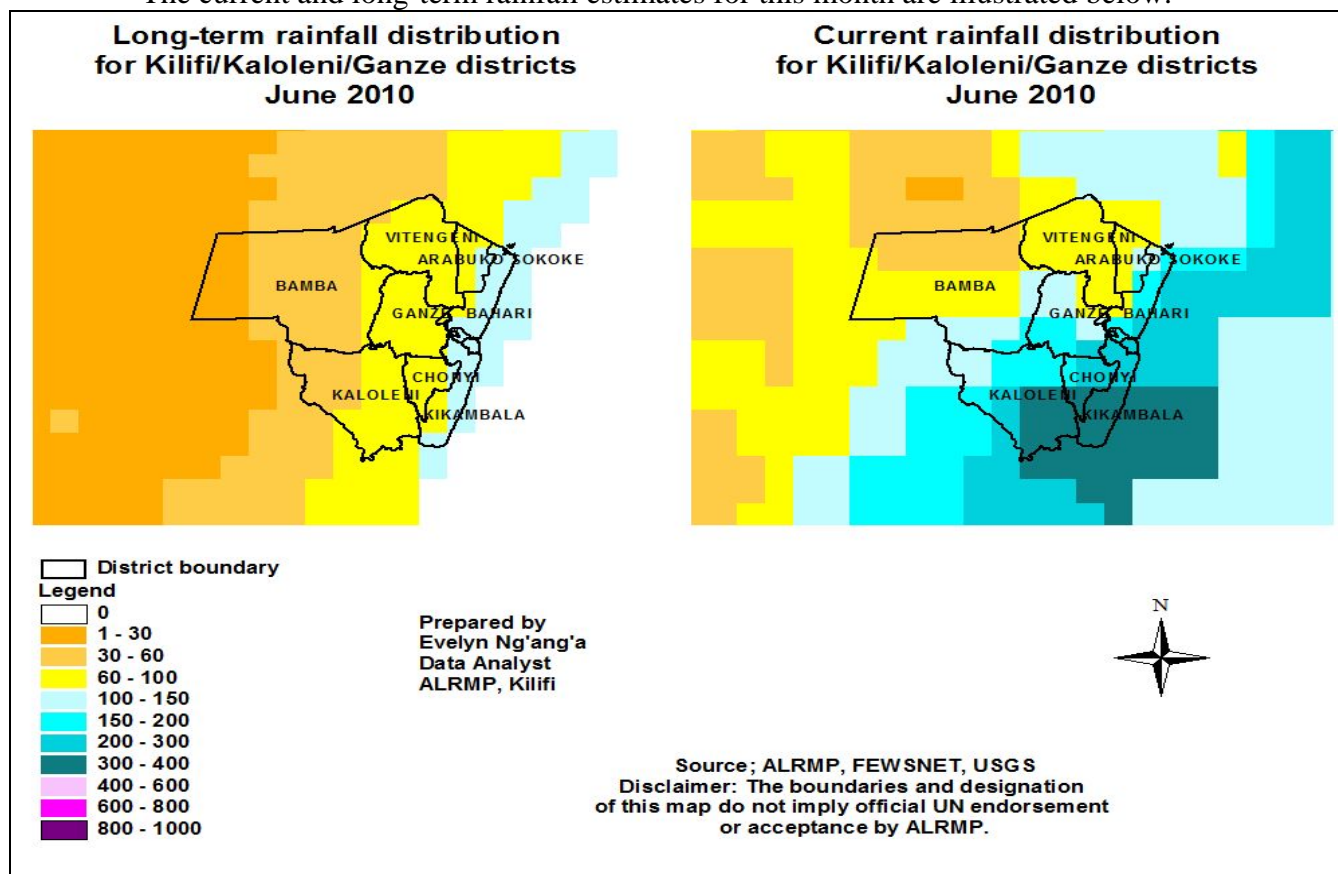
1.0 Environmental indicators (Stability)

1.1 Rainfall.



n=12

- 96.3 mm of rainfall was recorded for an average 7 days this month in comparison to 76 mm recorded in the previous month. The highest rainfall was recorded in the food cropping zone at 118.4 mm for 7 days while the least rainfall was accumulated in the ranching one at 52.8 mm for 6 days.
- The current and long-term rainfall estimates for this month are illustrated below.

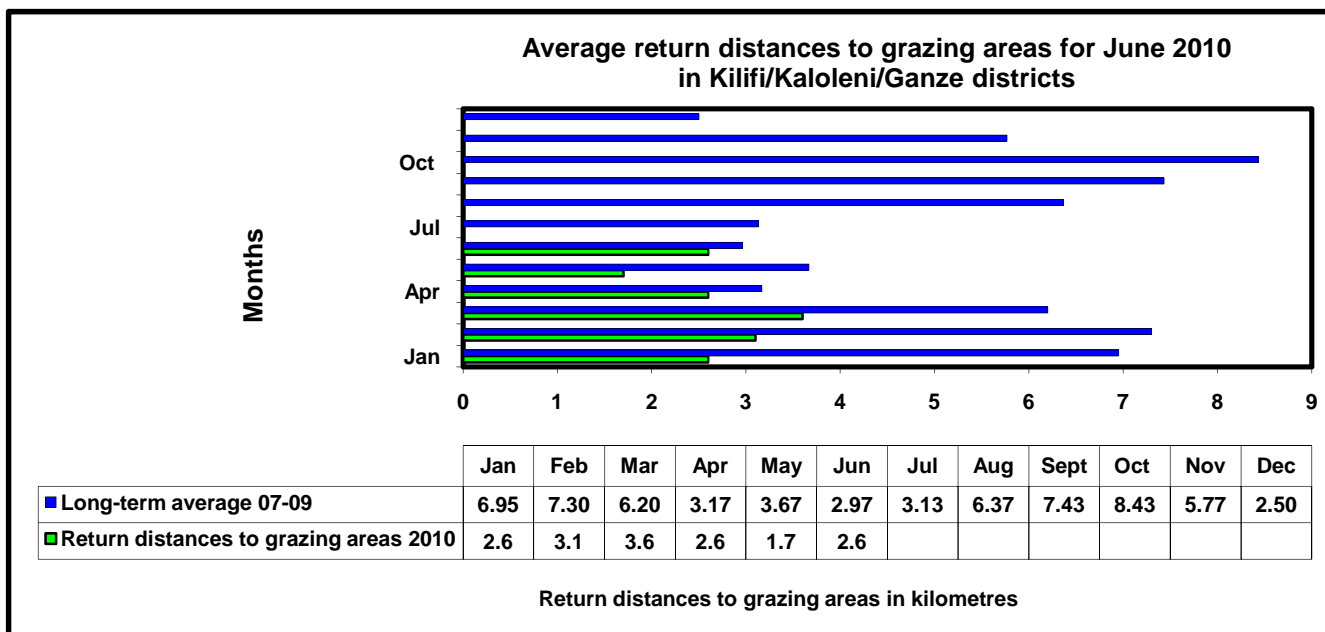


1.2. Condition of natural vegetation and pasture

1.2.1 Quality and quantity.

An improvement in natural vegetation and pasture coverage was recorded owing to the fact that rainfall prevailed in the month under review constructively impacting on reduced distances to grazing areas apart from slight stress in the ranching zone where areas like Mnagoni and Goshi which suffered from inadequate rainfall.

1.2.2 Distance to grazing areas

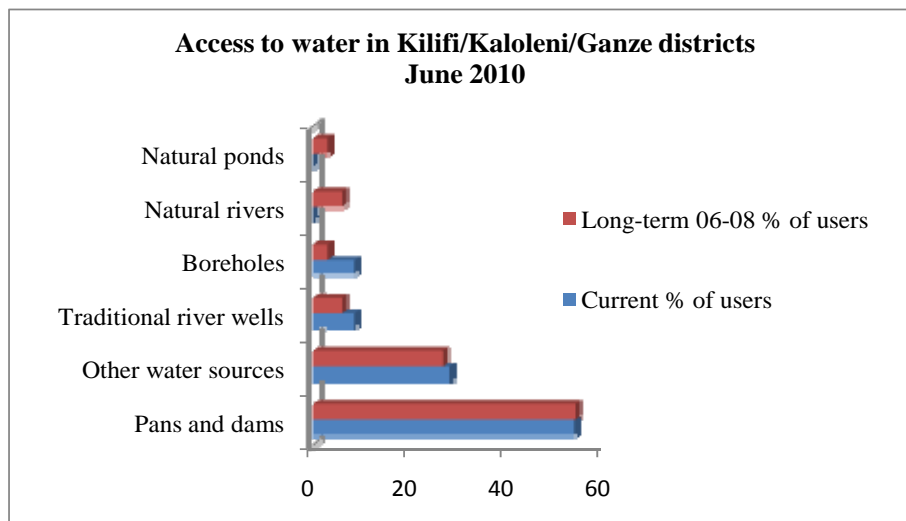


n= 360

- Distances to grazing areas increased slightly from 1.7km recorded last month to 2.6 km this month. This rise in distances could be attributed to extra long distances in the ranching zone and an increased length in the food cropping zone. However, decreases in distances to grazing areas were recorded in all other livelihood zones.
- The ranching zone recorded the longest distance at 4.2 km while the least was recorded in the cash cropping and dairy zone at 1.6 km. The average distance recorded this month was slightly less than that expected in a normal year.

1.3 Water sources and availability

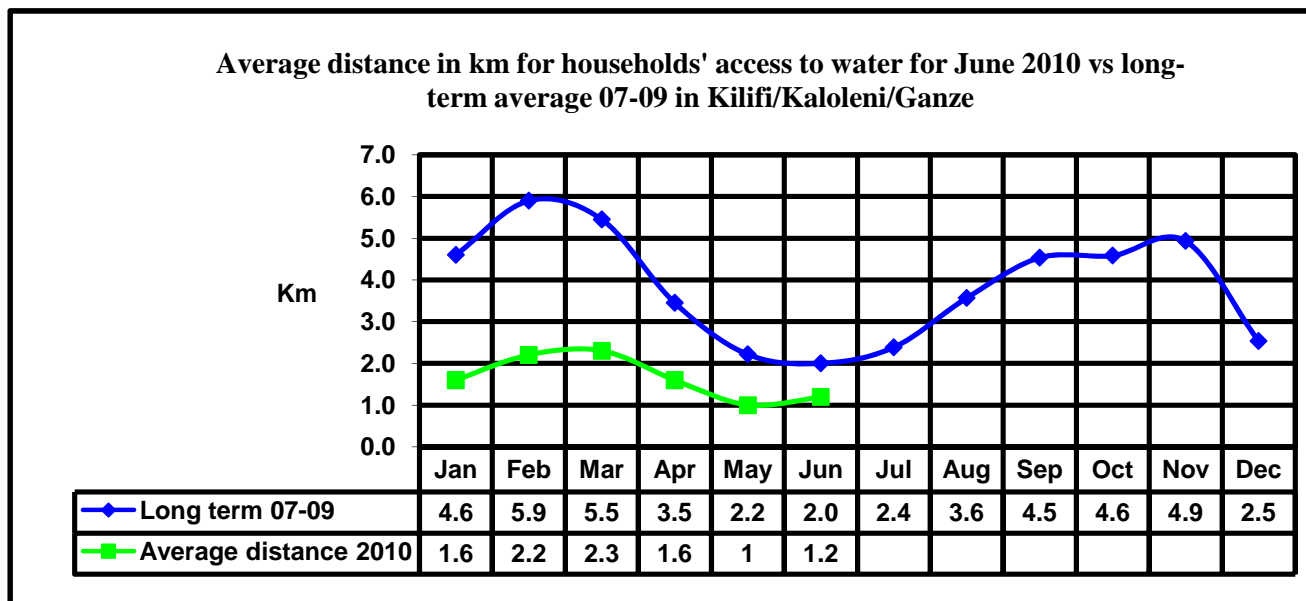
1.3.1 Main sources of water



n=360

- 54% of water consumers relied on pans and dams this month, a 3% upward increment compared to last month. The slight upward trend was attributed to slight increment in rainfall in the month under review in the entire livelihood zones apart from ranching zone that registered a decrement of 30mm of rainfall compared to last month.
- Compared to the long-term average 06-08, the numbers were slightly lower than normal.

1.3.2 Household access to water



n=360

- Access to water by households this month experienced minimal increase of 20%, still a manageable distance. Distances would probably increase or reduce basing on the longevity of the long rains.

- Compared to the long-term average 07-09, the distances were below the expected for this time of the year.

1.3.3 Livestock access to water

Access to water by livestock advanced this month as most water sources were replenished. But water stress for livestock is still experienced in some areas of the ranching zone due to inadequate rains.

1.4 Emerging issues

Human/wildlife conflict in the food cropping area of Madamani in Vitengeni division where stray elephants have interrupted learning activities.

1.5 Implications on food security

Distances to grazing areas and household access to water was maintained apart from the ranching zone where rainfall showed a negligible increase of 1.7%, triggering stress for both domestic and livestock alike. This is likely to impact quite positively on food security across all livelihoods. Pasture regeneration is likely to continue improving.

2.0 Rural economy indicators (Food availability)

2.1. Livestock production

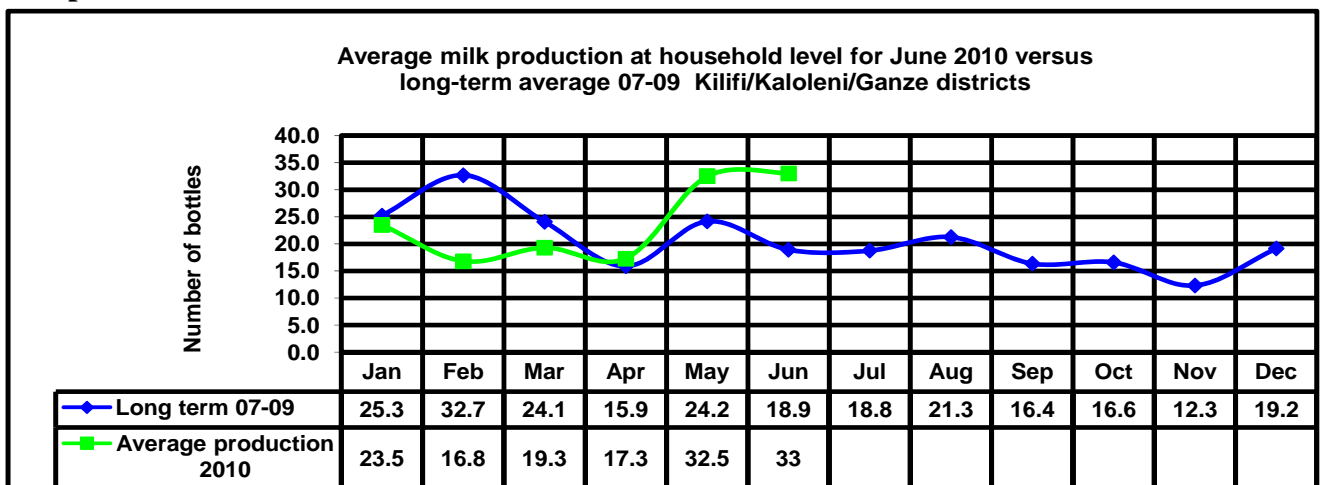
2.1.1. Livestock body condition

The livestock maintained good body condition this month. This is attributed to enhanced availability of livestock feed. The condition is projected to increase should the long rains continue.

2.1.2 Livestock diseases

No major livestock diseases were reported in the month under review.

2.1.3 Milk production



n=360

The average milk production insignificantly increased by 0.5 bottles from 32.5 bottles last month to an average 33 bottles this month. The chief producer of the month under review remaining to be the ranching zone at an average of 52 bottles, with a recommendable increase across the other zones as well.

2.2 Crop production

2.2.1. Timeliness and status of crops

- The main on-farm activity was weeding of the early planted crop and harvesting of pulses on a small scale. Generally, most livelihood zones expect to have a bounty harvest due to a good rainy season that is currently on-going. However, a watchful eye should be kept on a few isolated areas of the ranching zone as minimal rains were received in this zone. Similarly, some areas in the marginal mixed farming experienced water-logging due to excessive rainfall, not to mention the loss of farm inputs such as seeds due to flooding.
- Tsangatsini, Guru guru and Mitangani are such areas affected by moisture stress due to poor rains.

2.2.2. Pests and diseases

No pests or diseases were reported in the month under review.

2.2.3. Crop harvests

Cassava, legumes, green maize, coconuts have been harvested this month.

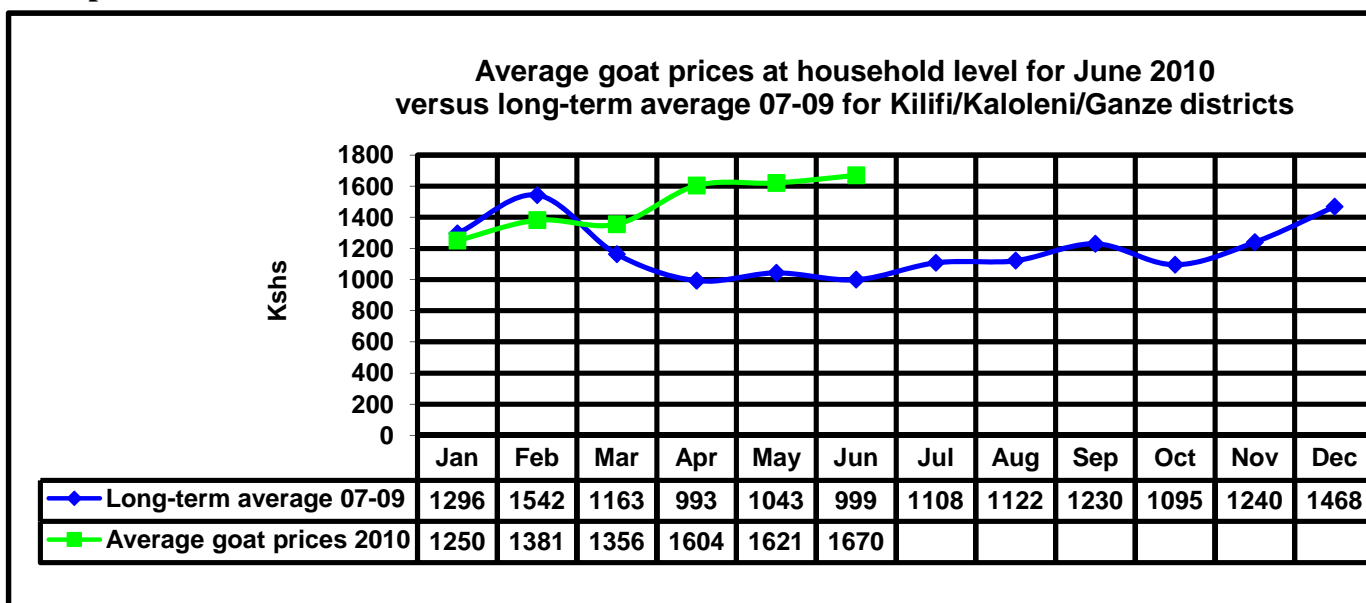
2.3 Implications on food security

Good livestock body condition, increased livestock production and an expected bounty harvest all point towards a positive trend in food security. However, areas suffering from water-logging and reduced rainfall are likely to face substantial stress in their food security status this month.

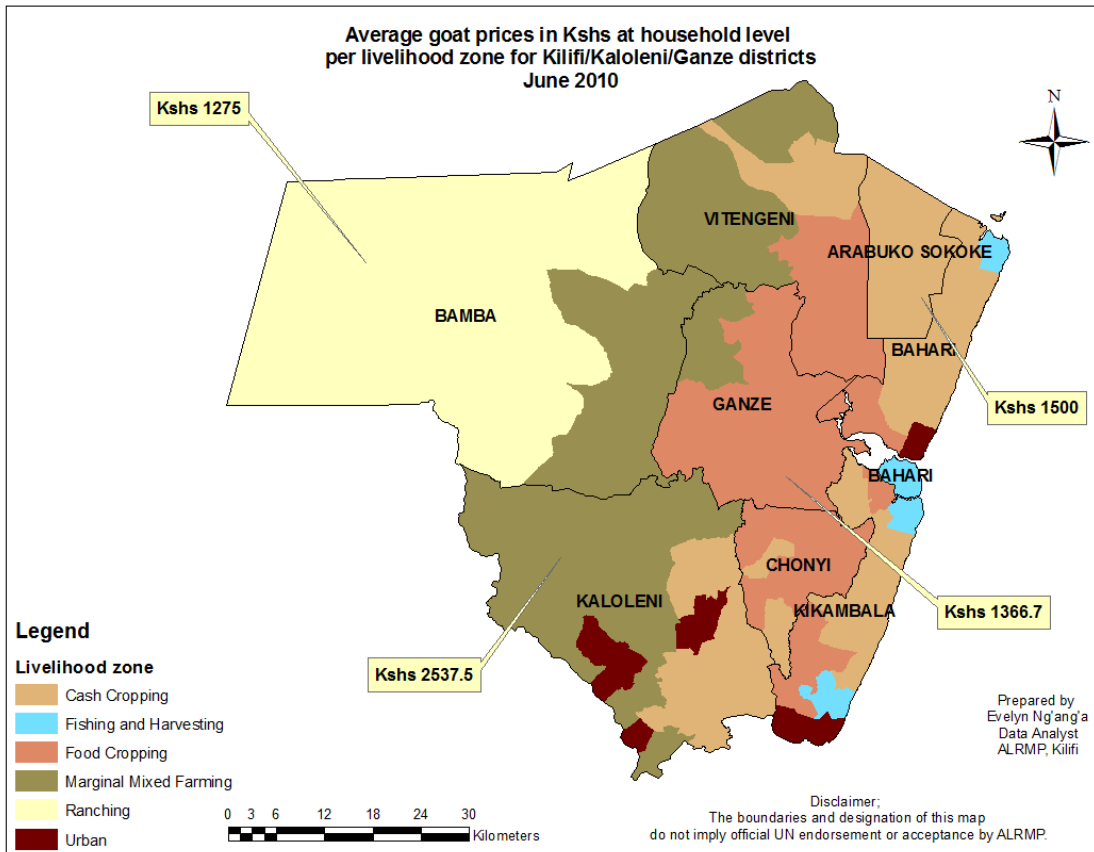
3. Access to food

3.1 Livestock marketing

3.1.1 Goat prices

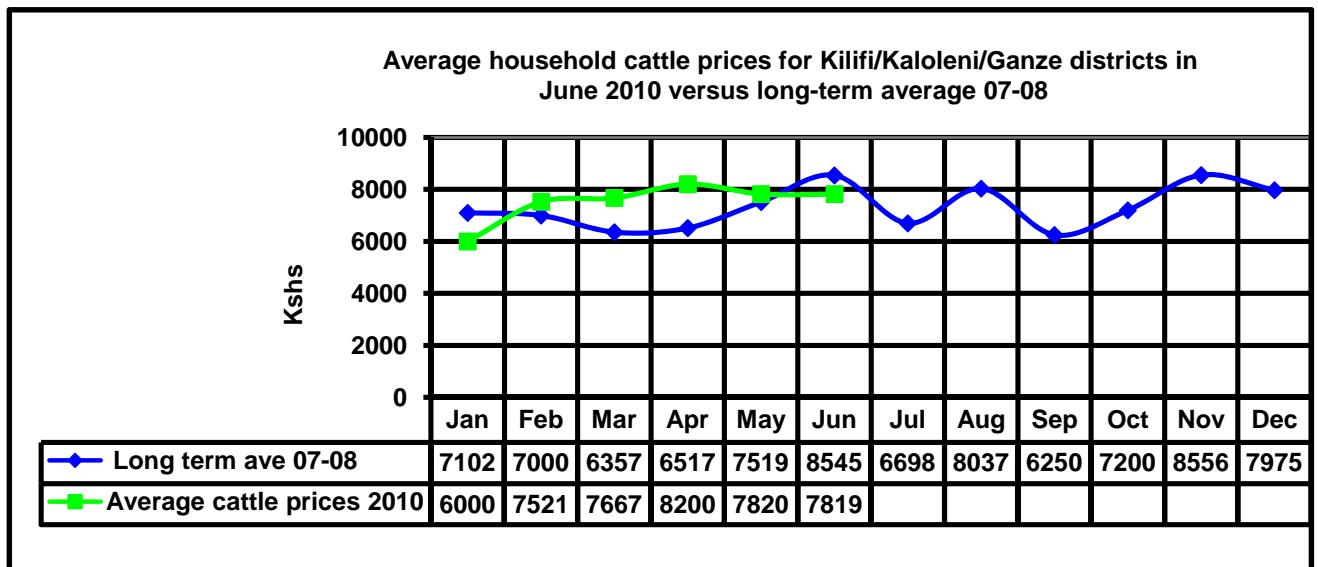


n=360

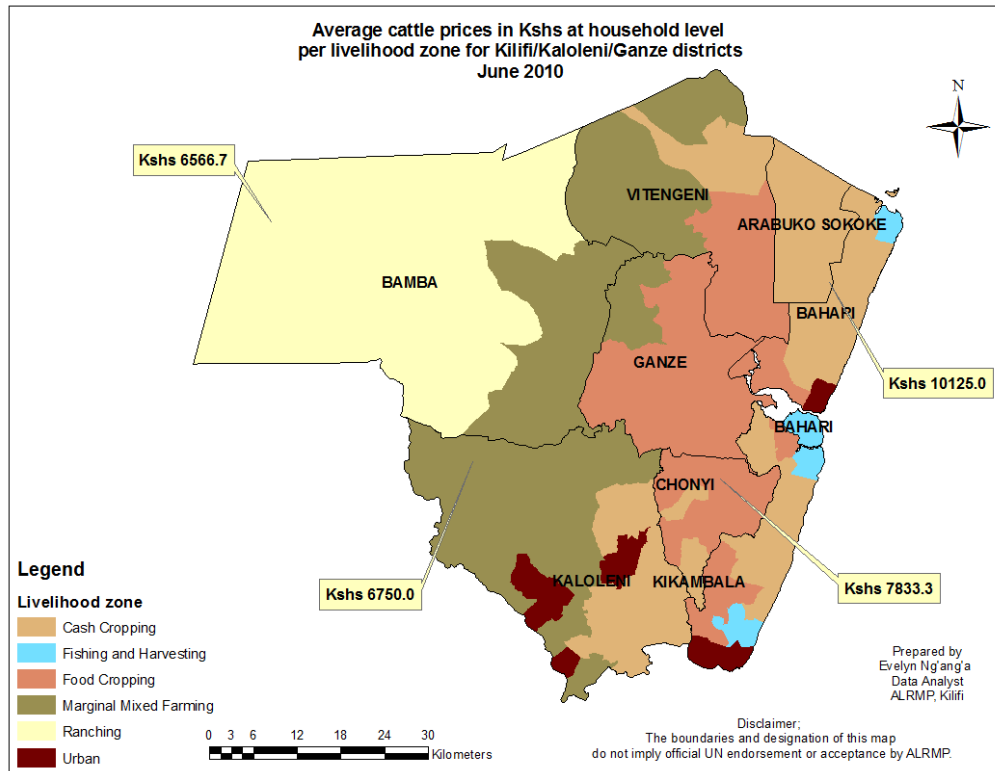


- A negligible increase of 3% was recorded in the selling price of a medium-sized goat from Ksh1621 last month to Ksh1670 this month. Goat prices continue to be competitive due to improved availability of browse.
- The highest prices were recorded in the marginal mixed farming at Ksh2537.5 while the least were recorded in the ranching zone at Ksh1275. The average price was above that expected in a normal year.

3.1.2 Cattle prices

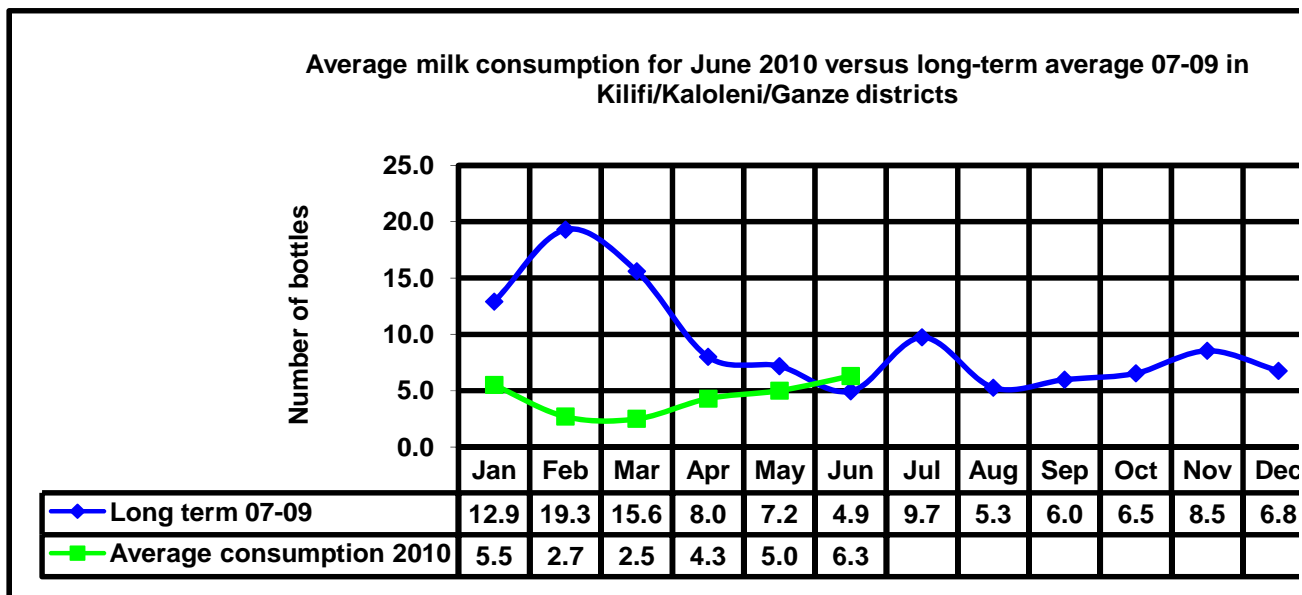


n=360



- The average selling price of a medium-sized bull remained similar to last month's at Kshs 7819 compared to Kshs 7820 recorded last month. The cash cropping and dairy zone recorded the highest price at Kshs 10125.0 while the least was recorded in the marginal mixed farming one at Kshs 6750.
- The average price recorded this month was less than expected in a normal year.

3.2 Milk consumption

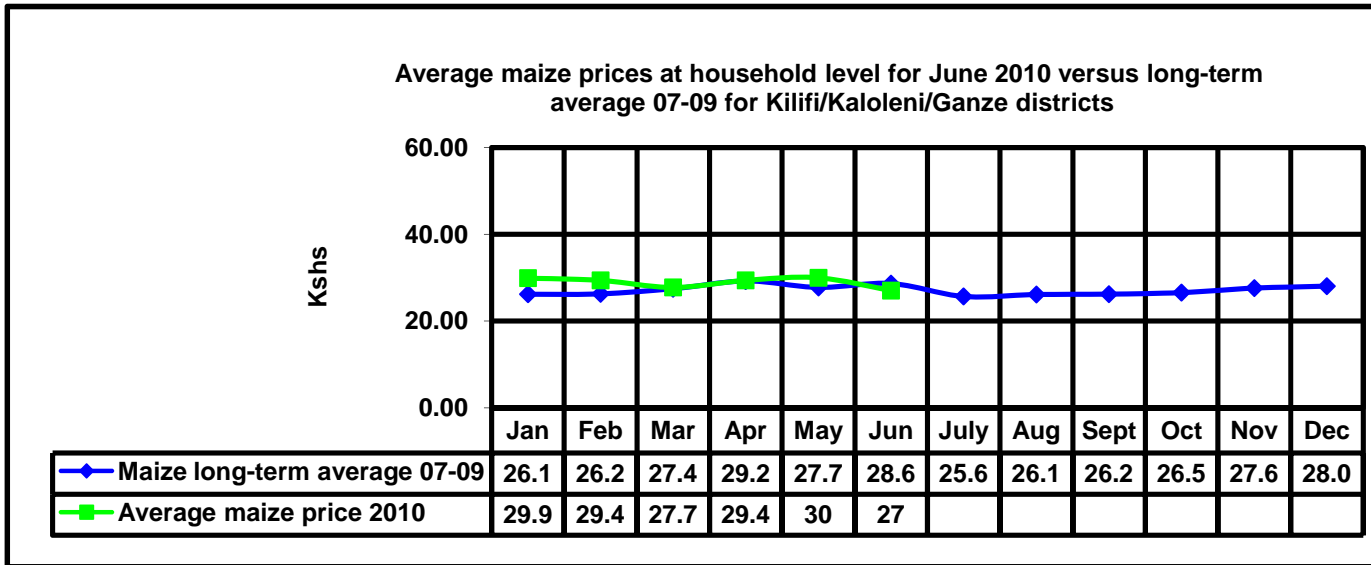


n=360

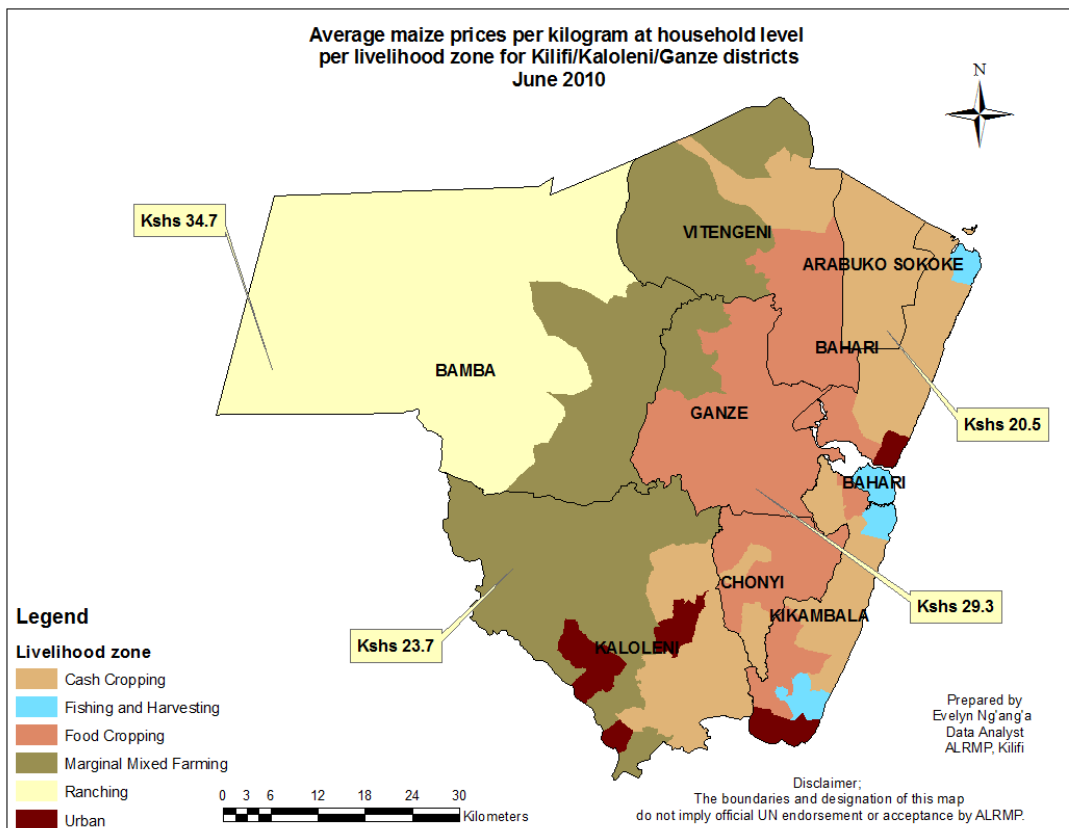
- The average milk consumption increased by 26% this month from an average 5.0 bottles to an average 6.3 bottles this month. The highest consumption was recorded in the ranching zone at an average 12.0 bottles while the least was recorded in the cash cropping and dairy one at 3.0 bottles.
- The average consumption this month was slightly higher than normal for this time of the year.

3.3 Food prices

3.3.1 Maize prices

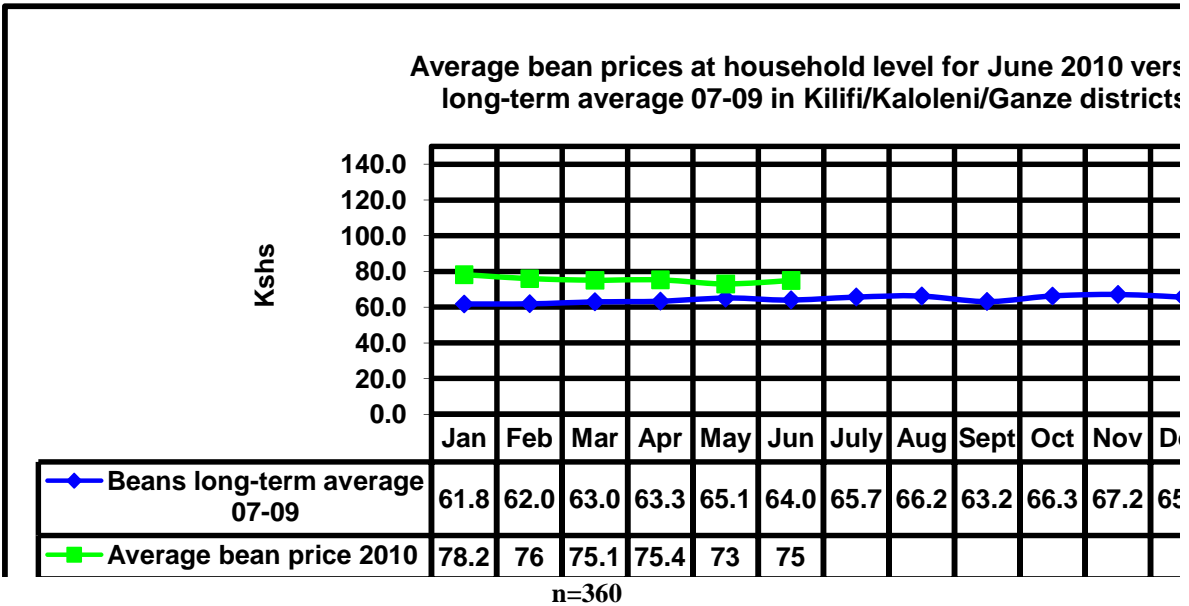


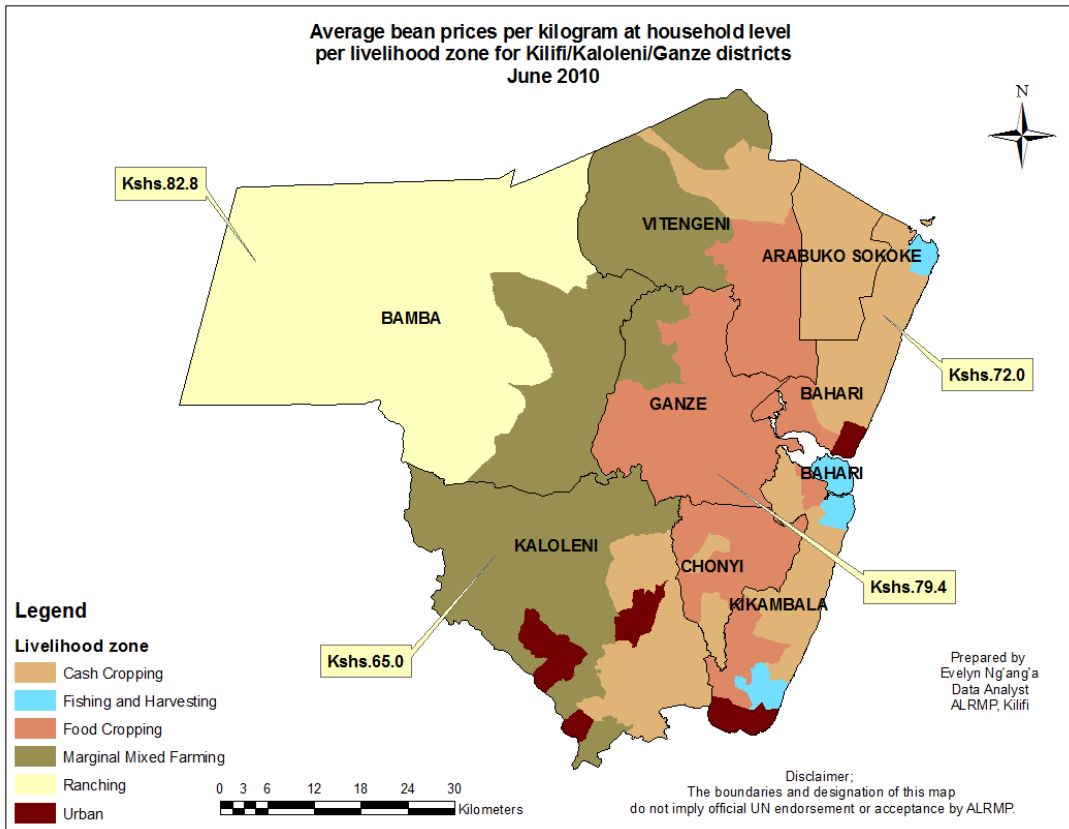
n=360



- The selling price of a kilogram of maize was Ksh27.0 this month, down by 10% compared to last month's price of Kshs 30.0. Further decreases are expected as the region enters its harvesting period in a month to come.
- The highest prices were recorded in the ranching zone at Ksh34.7 while the lowest prices were recorded in the cash cropping and dairy one at Ksh20.5.
- Maize prices have almost stabilized as their prices almost equal that of the long-term average.

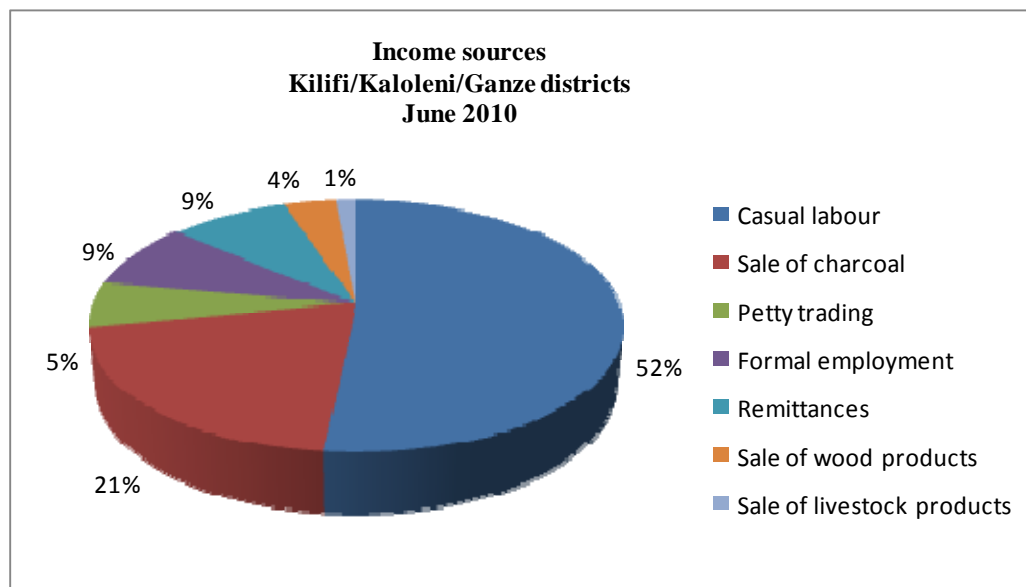
3.3.2. Beans prices





- The trading price of beans this month was Kshs 75.0, a negligible increase from Kshs 73.0 recorded last month. The highest prices were recorded in the ranching zone at Kshs 82.8 while the least were found in the marginal mixed farming one at Kshs 65.0.
- Unlike maize whose prices have stabilized and almost resumed normalcy, the prices of beans still remain higher than normal.

3.4. Income



n=339

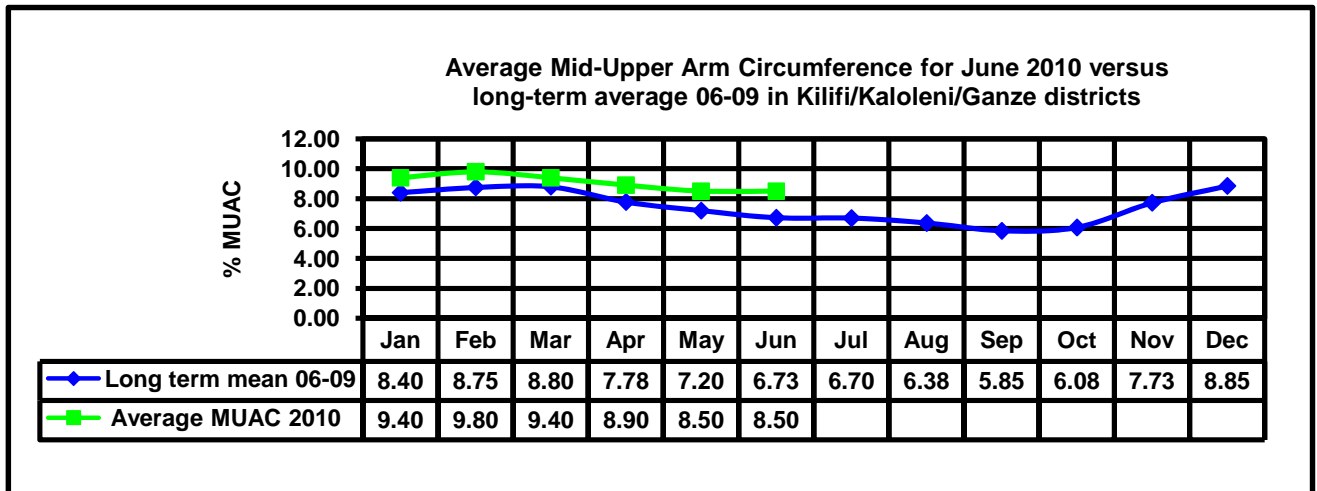
- Casual labour was the most relied upon source of income by the majority of the households in the three districts this month followed closely by the sale of charcoal. Other sources of income were as illustrated above.
- The average daily wage rate dipped slightly this month by 2.9% from Ksh149.8 last month to Ksh145.5 this month. The highest daily wage rate was recorded in the cash cropping and dairy zone at Ksh182.0 while the least was found in the ranching one at Ksh103.0.

3.5. Implications on food security

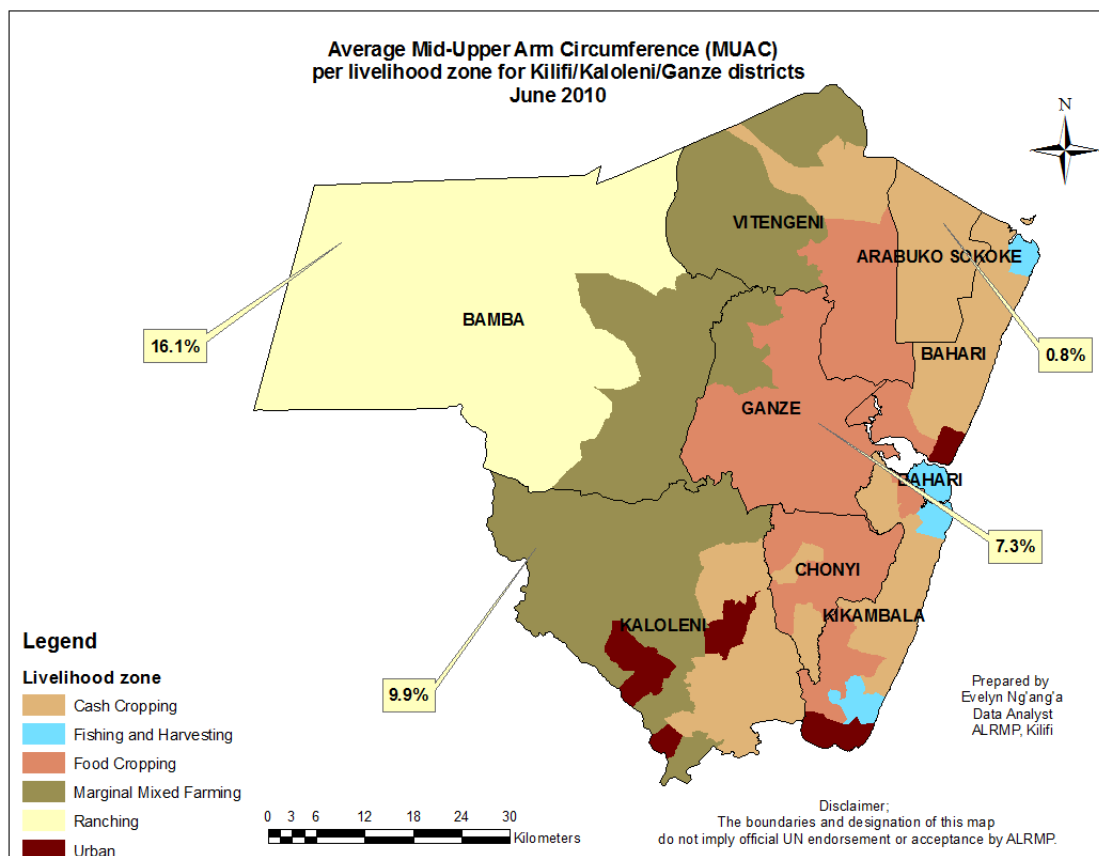
The livestock market and food commodity market are stabilizing in the region spelling a positive trend on food security. Although most do not have food in stores, it is likely that the harvest is going to be good this season save for a few areas in the ranching and marginal mixed farming areas.

4.0 Human welfare indicators (Utilization of food)

4.1 Nutrition status



n =1827



- The proportion of children at risk for malnutrition remained similar to last month at 8.5%. The highest percentage of children was found in the ranching zone at 16.1% while the least was recorded in the cash cropping and dairy zone at 0.8%.
- Compared to the long-term average, the proportion of children at risk was higher than expected for this time of the year.

4.2 Human health

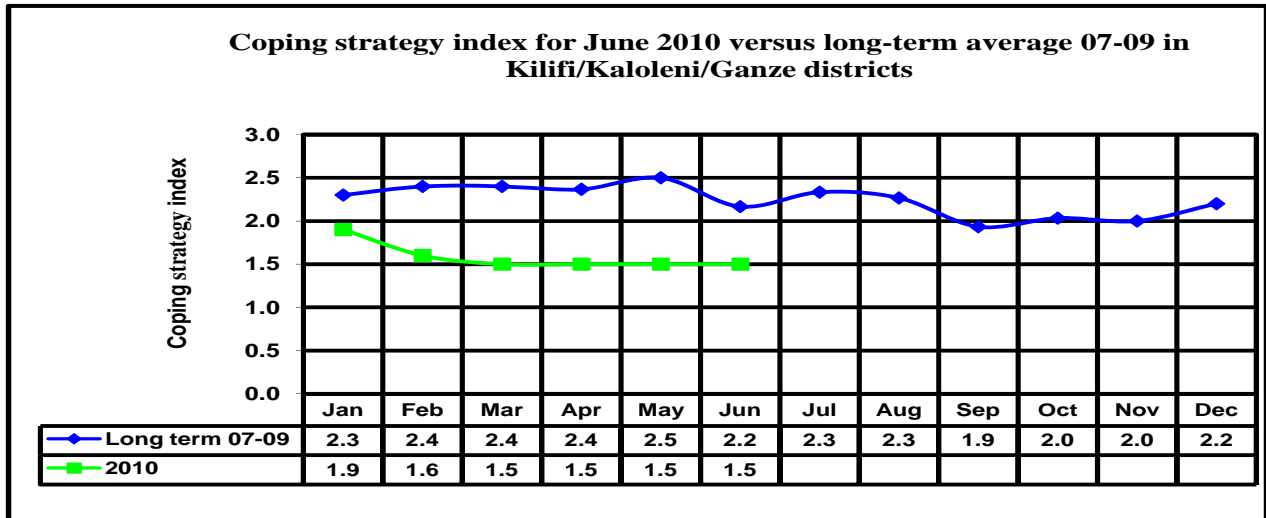
Cholera outbreak was reported in Matsangoni in Kilifi district and Mariakani, Tsangatsini areas in Kaloleni district too. 7 people have been confirmed dead. The situation is being closely monitored by the Ministry of Health.

5.0 Ongoing interventions

5.1 Non-food aid

- Coast Rural Support Program (Sombeza) is supporting bee-keeping in Bamba division.
- Support to crop production through provision of 5 Amiran irrigation kits by ALRMP.
- Mahumbo water pan is being excavated through joint efforts between World Vision, and ALRMP.
- Promotion of tree nursery establishment in 16 locations through provision of equipment by ALRMP and KFS.

5.2 Coping strategies



n=360

- The coping strategy index remained the same as last month at 1.5. The highest index was recorded in the cash cropping and dairy zone at 1.8 while the least was recorded in the food cropping at 1.2.
- The coping strategies mainly employed this month included smaller meal sizes, reduced number of meals, engaging in degrading jobs such as begging and child prostitution and casual labour.

6.0 Recommendations to DSG and KFSM

- Continued surveillance and management for Cholera out-break in Kaloleni District where 7 deaths were reported.
- Awareness creation among farmers on post harvest management by the DAO Kilifi, Ganze and Kaloleni.
- Surveillance and awareness creation of aflatoxin in maize.
- Control of wild life by KWS to reduce wild life human conflict and crop destruction
- Awareness creation on sanitation and water treatment to curb water-borne diseases.