

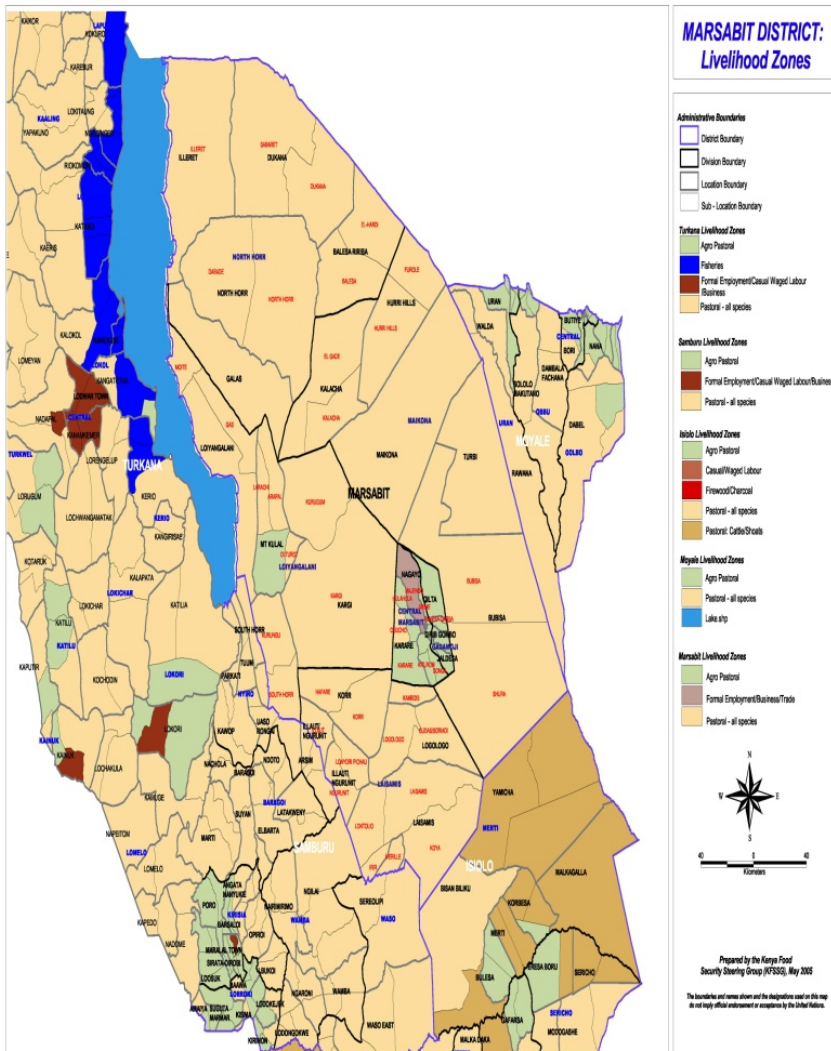


**OFFICE OF THE PRIME MINISTER  
MINISTRY OF STATE FOR DEVELOPMENT OF NORTHERN KENYA AND OTHER ARID LANDS  
ARID LANDS RESOURCE MANAGEMENT PROJECT II**

**DROUGHT MONITORING BULLETIN, JUNE, 2010**

**Marsabit, Laisamis and Chalbi Districts**

**Warning Stages**



Livelihood zone	Warning Stage	Trend
Agro-Pastoralist	Alert/Alarm	Worsening
Pastoral-All species	Alert/Alarm	Worsening
Fishermen/Pastoralist	Alarm	Worsening

**Seasonal calendar**



## **Situation overview**

- The long rains season ended in all parts of the larger Marsabit district during the month under review.
- Forage availability was adequately reported in most parts of the district while quality was dry in all ecological zones. Indeed, good pastures were reported thus will last for the next three to four months.
- All water sources were positively utilized as no water shortages were reported in most parts of the district.
- Body conditions of all livestock species were healthy apart from lactating shoats, thus no major disease incidents were reported in the greater district.
- Livestock prices increased due to improved body condition and decreasing sales numbers and controlled movement of livestock traders.
- EMOP relief food allocation was distributed among 106 centers in larger Marsabit district targeting 40-50% of the neediest households.
- GoK relief food was distributed in all Marsabit north, south and central districts. The minimal food aids was for both untargeted people from the EMOP relief, community schools, vulnerable community members, etc. Indeed, the food targeting was as proposed by District Steering Groups.
- Malaria, diarrhea and respiratory tract infections were increasingly reported among both children and adults equally.
- The nutrition status of children < 5 years improved slightly during the month as the percentage of those rated at risk of malnutrition declined to 22.1 from 23.5 the previous month.
- Food prices rose during the month. With decreasing milk availability at household level, cereal prices are expected to rise further.
- The security situation (banditry, tribal clashes and livestock raids) improved in all administrative boundaries. But an incident was reported in Loiyangalani sub location whereby 184 shoats were stolen and later recovered with the effort of both security personnel and community interventions. An unknown number of lost and stolen camels were also reported in Lonjorin sublocation bordering Loiyangalani and Samburu districts.

## **Current interventions (food and non-food)**

- Construction of a water tank at Mpagas primary school in Laisamis division – KRCS
- Sponsoring of the community volunteer teachers in Mpagas primary school -CIFA
- Sponsored and facilitated a 5days training workshop for all Laisamis district administrators including D.O.s, Chiefs, DPCs' and community leaders- UNDP/ALRMPII.
- Water trucking to Torbi, Burgabo and around Hurri hills – ALRMP/PISP
- Allocation and distribution of EMOP/ WFP food aids to all one hundred and six DFC of larger Marsabit district. - KRCS.
- Recovering of the Loiyangalani raided shoats' (one hundred and eighty four) with the effort of security officers and community leaders.

## **Recommendations to KFSM and DSG**

- Fostering of peace within district borders. Disarmament should be encouraged by all stakeholders to end the raids and tribal clashes in the larger district.
- EMOP relief allocation should be consistent to meet its monthly allocation and avoid food insecurity, especially among fisher folk and pastoralist livelihoods.
- Provision of supplementary feeding program for the severely malnourished children.

- Equip all dispensaries and health centers with medication for treatment of URTIs, malaria.
- Contingency fund should be availed to curb the anticipated water scarcity and livestock diseases besides other seasonal disasters.
- Restocking program should be initiated as a timely intervention
- District Rapid Assessment Team should be conducted to assess the impact of the long rains season.
- Conduct a KFSSG short rains assessment to pave way for the district implementation.
- Civic education on the proposed constitution and referendum.

## **1.0 Environmental indicators**

### **1.1 Rainfall**

During the month under review there was no rainfall experienced in all parts of the larger district apart from Mt. Marsabit and Mt. Kulal reporting a day showers averaging 4.1mm.

### **1.2 Condition of natural vegetation and pasture**

- Quality of forage was rated dry in all ecological zones following the progressing long dry period. Most parts of the district with abundant or good forage that will sustain livestock for the next three to four months.
- Distances between forage camps and watering points are on increase at five kms than were in the previous month and one km as to this time of the month. Inadequate forages are reported in Torbi, Bubisa and Burgabo, being along Marsabit via Moyale highway settlements can only sustain in the next month.

### **1.3 Water sources and availability**

#### **1.3.1 Use of water sources**

- The existing water sources includes, traditional river wells, springs, rock catchments in most parts of the district being permanent sources and a few boreholes in water stress areas.
- Distances for domestic water remained at reachable averages of three to four kms in most lowland parts while hilly areas at six kms. This positive indication reflects the strategic water distribution for community domestic use in near past.
- Distances for livestock use have slightly increased compared to this time of the established mean. Indeed no significant water borne related disease incident reported apart from the normal controllable diarrhea in Kalacha, Log logo, and Loiyagalani locations.
- Overall, distances between forage camps and watering points are expected to increase further with the progressing long dry spell.

### **1.4 Emerging issues**

#### **1.4.1 Insecurity/ Conflict**

A raid was reported in Loiyangalani district where unknown number of camels were stolen in Lonjorin sub location which borders both Loiyangalani and Samburu district.

#### **1.4.2 Migration**

##### **a) Livestock migration**

- Livestock migrations from their homesteads to dry season grazing areas were reported all over the larger district. Indeed, few lactating shoats remained behind at their homesteads.
- In the pastoral livelihood of North Horr district, livestock was concentrated in Konon Gos, Dukana, Bales Saru and around Balesa areas and for Laisamis division are reported at average distances of twenty kms and generally few lactating stock remained at homesteads. In Loiyangalani district are concentrated in Arapal, Gatab, Moite, and Ntepes and along western part of the greater Lake Turkana.
- Livestock from Agro/pastoral livelihood of Marsabit central and Gadamoji divisions was still at Sololo of Moyale district and mini herds (lactating) are at home.

##### **b) Human migration/ displacement**

No human displacement was reported in all ecological zones thus remained normal situation of this time of the year. Relatively, few (two %) households migrating from larger concentrations

(herders those have dependable herd sizes) following their livestock to dry season grazing areas as their sole livelihood.

## 2.0 Rural economy indicators (food availability)

### 2.1 Livestock production

#### 2.1.1 Livestock body condition

Livestock body conditions are healthy among all species apart from lactating shoat species. Healthy livestock body condition was favoured by lack of diseases in larger Marsabit district besides availability of good pastures or forage availabilities in most ecological zones.

#### 2.1.2 Livestock diseases

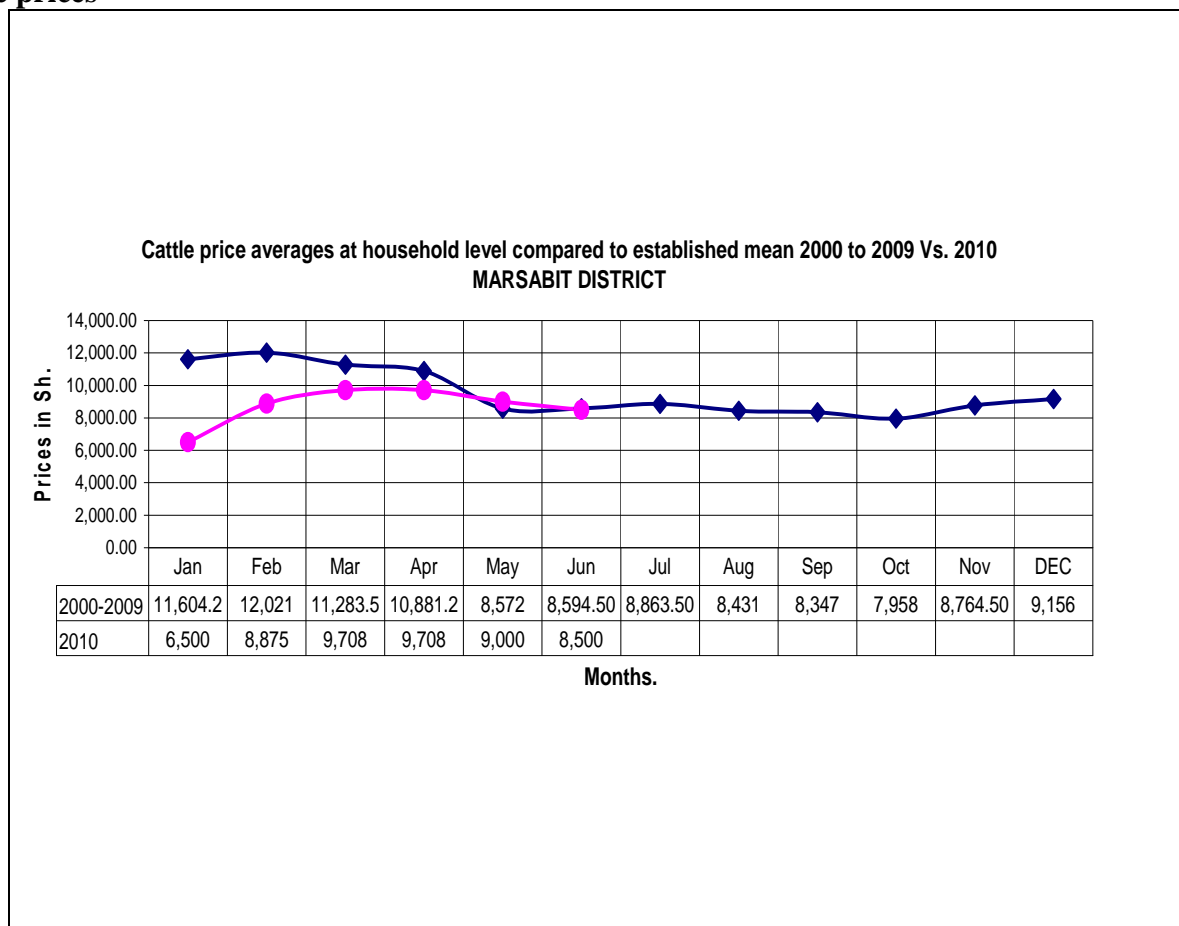
Contagious Caprine Pleural –pneumonia (CCPP) and worm infestation and enterotoxaemia among goats’ species, and hemorrhagic incidents among camel species were minimally reported in Kalacha and North horr locations of Marsabit north district.

### 2.2 Implications on food security

- Although no significant livestock diseases were noted in most parts of the district, relatively, the anticipated deteriorating body conditions in all livestock species with progressing long dry period recalls for food implication at household level.

## 3.0 Access to food

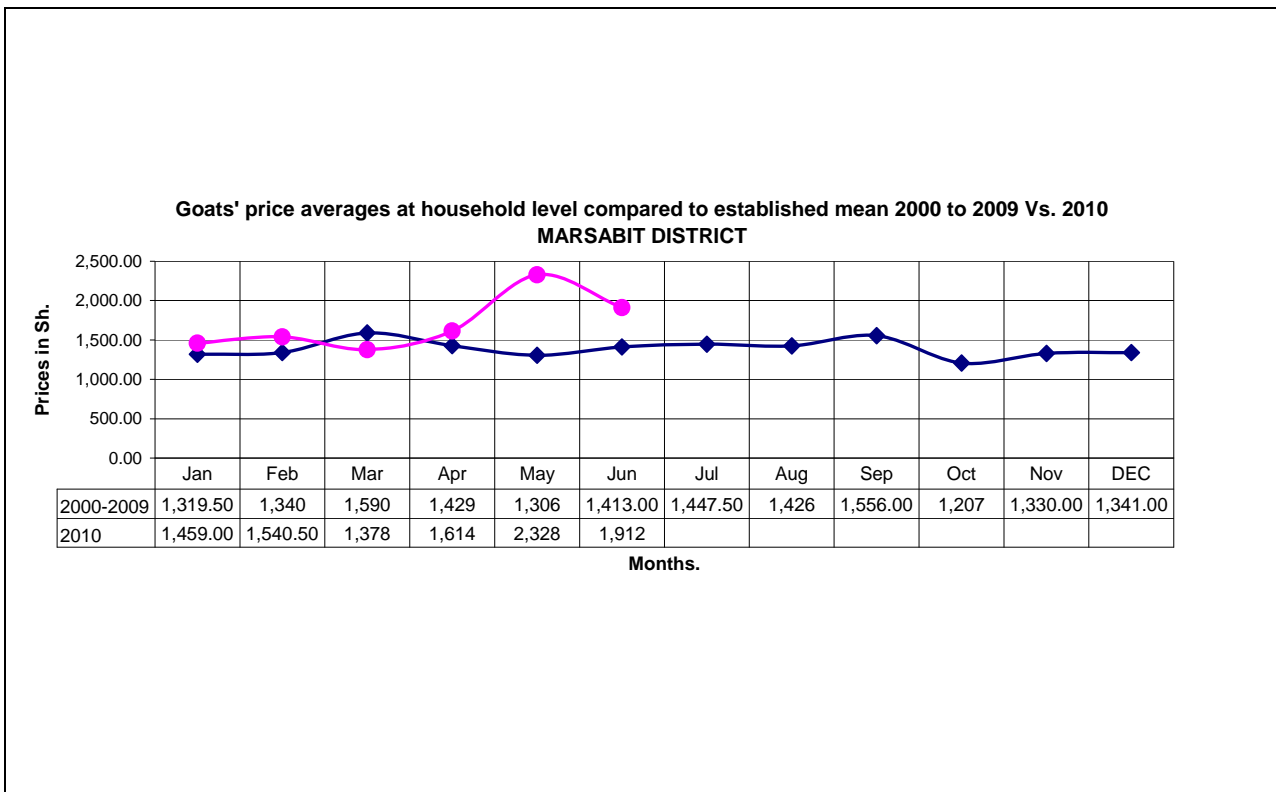
### 3.1 Cattle prices



Ref: N =1 (No. of the sold cattle) by 13 Sentinels x 30 Households

Cattle prices showed a slight down trend at Ksh8,500.00 (1%) compared to Ksh9,000 the previous month. The prices are expected to increase as a result of healthy body condition.

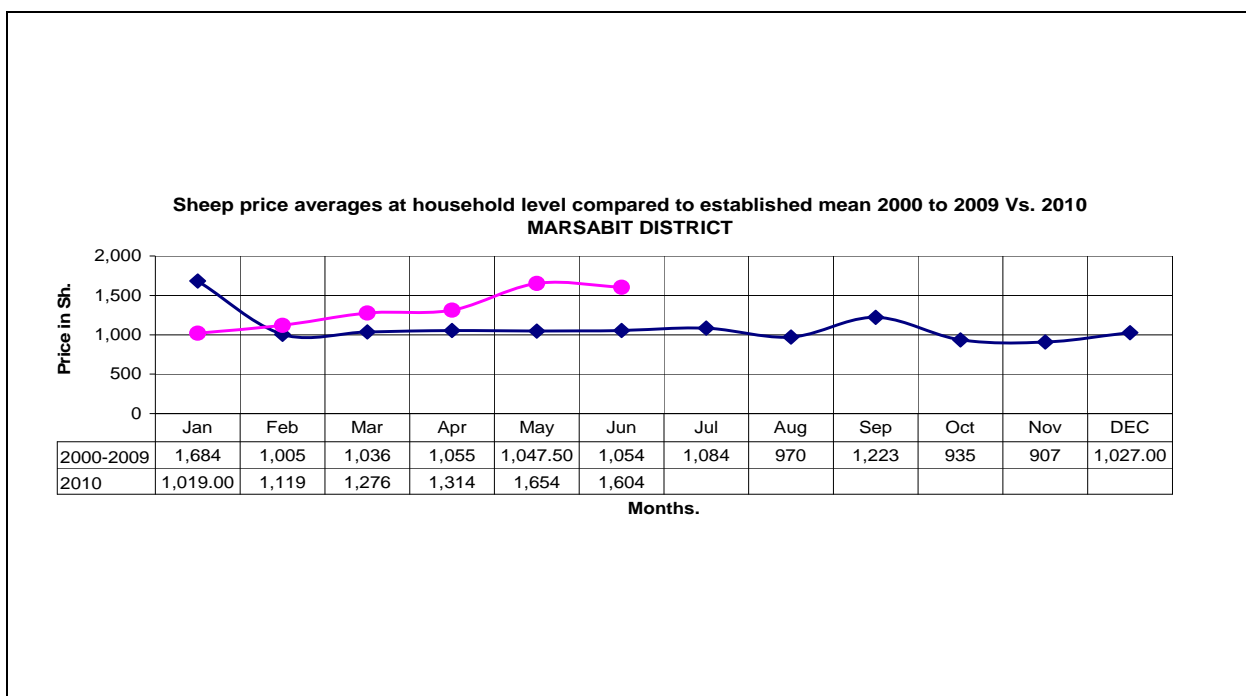
### 3.1.2 Goats prices



Ref: N =59 (No. of sold goats') by 13 Sentinels x 30 Households

Goat prices declined during the month to Ksh1,912 from Ksh2,328 the previous month. Higher prices were recorded in central/Gadhamoji divisions (Agro/pastoralist) of Marsabit central district at Ksh2,450, followed by Laisamis division (pastoralist lv) of Marsabit south district at Ksh 2,239 while North horr division of North horr district recorded the least at one Ksh1,678.

### 3.1.3 Sheep prices



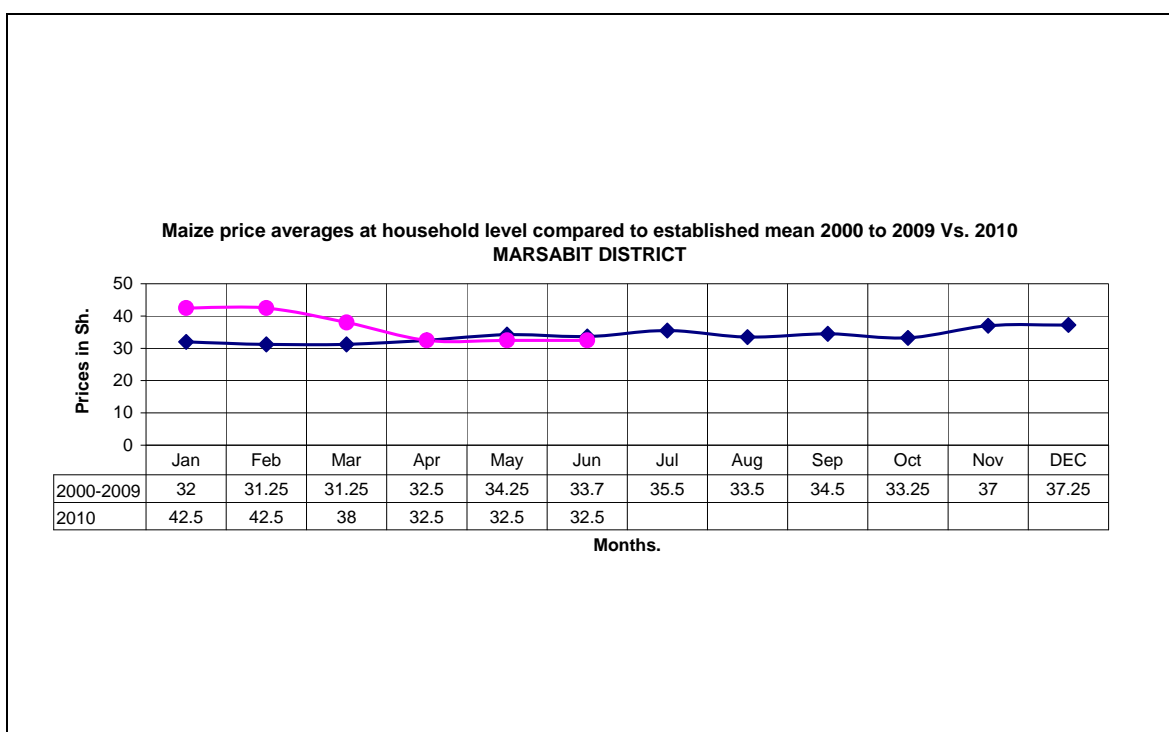
**Ref: N =52 (No. of Sheep sold) x 13 Sentinels each by 30 Households**

- Sheep prices were stable during the month, with the recorded average price being Ksh 1,604 compared to ksh 1,654 the previous month.
- Higher sheep prices were recorded in Laisamis division (pastoralist lv) in Marsabit south district at Ksh2,328 followed by Maikona division (pastoralist lv) in Marsabit north district at Ksh 1, 700 and Loiyangalani division in Loiyangalani district (fisher folk/ pastoralist lv) at Ksh1,000. Sheep sales numbers remained the second highest.

### 3.2 Milk consumption

Milk yields reduced from one and half liter per household per day to 600mm per household per day. Indeed, only 240 liters of milk were consumed out of the sampled 390 households.

#### 3.3.1 Maize prices



**Ref: N =390 households purchasing out of 13 sentinel each 30 households.**

- Maize prices at district level remained highly stable. The average price was Ksh32.5 per kilo same as the previous month.
- However, the prices are expected to peak again following the current failure of the anticipated long rains harvest. Comparatively higher maize prices were reported in Loiyangalani division of Loiyangalani district of fisher folk livelihood at Ksh 55 followed by Laisamis division of pastoral (Marsabit south) at Ksh40 and agro/pastoral livelihood on Mt. Marsabit in Central and Gadhamoji divisions of Marsabit central district reported the least at Ksh20.

### **3.4 Income**

#### **3.4.1 Livestock income**

Livestock sales were the most dominant source of income. However, sales numbers are expected to reduce with prolonged dry period.

#### **3.4.2 Other income**

Other income sources include casual labour where seven percent of sampled households stated so, few others reported sale of charcoal, sale of khat (miraa), formal employment between ksh. 200 to 1000 and engaging in menial jobs that fetched between ksh.40 to 225 per day.

### **3.6 Implications on food security**

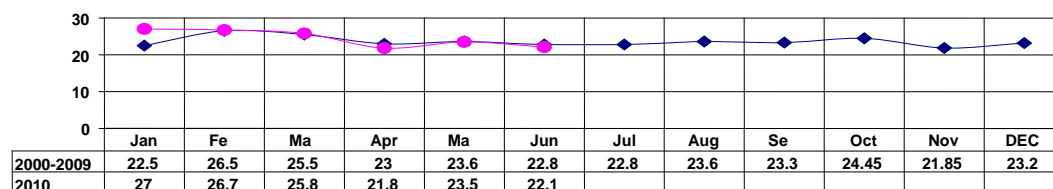
Despite the significant decrease in independent livestock sales and prices as a result of collapsing terminal market, prohibitive cereal against meat ratio had a negative impact on food security particularly among pastoral and fisher folk livelihoods.

## **4.0 Human welfare indicators (Utilization of food)**

### **4.1 Nutrition status**

**Nutritional status of children <5years at household level compared to established mean 2000 to 2009 Vs. 2010**

MUAC in %



Months

**Ref: N=3.2 (Avg. No. of children) x 13 Sample sites x 30 Households**

- The nutrition status of children < 5 years improved slightly during the month as the percentage of those rated at risk of malnutrition declined to 22.1 from 23.5 the previous month.
- Higher rates were recorded in North horr division (pastoralist) at 37%, followed by Loiyangalani division in Loiyangalani district (fisher folk livelihood) at 35.6% while Gadhamoji division had the least at 10.5%.

#### 4.2 Human health

- The main prevalent human diseases were malaria and upper respiratory tract infections among children and few adults in Kalacha, Loiyangalani, Ngurunit, Maikona sentinels thus being within normal situation of the year.
- With windy/dusty and sunny/harsh weather is expected to increase cases of upper respiratory tract infections and malaria .
- Human health condition was complicated by lack of food, conditions that make people susceptible to diseases especially among fisher folk community.

#### 5.0 Current interventions

- EMOP food distribution to 106 centers in larger Marsabit district.
- Construction of a water tank at Mpagas primary school in Laisamis division – KRCS
- Sponsoring of the community volunteer teachers in Mpagas primary school -CIFA
- Sponsored and facilitated a 5days training workshop for all Laisamis district administrators including D.O.s, Chiefs, DPCs’ and community leaders- UNDP/ALRMPII.
- Water trucking to Torbi, Burgabo and around Hurri hills – ALRMP/PISP
- Allocation and distribution of EMOP/ WFP food aids to all one hundred and six DFC of larger Marsabit district. - KRCS.
- Recovering of the Loiyangalani raided shoats’ (one hundred and eighty four) with the effort of security officers and community leaders.

#### 5.2 Other coping strategies

The applied coping strategies among households include;

- Skipping meals
- Sharing of relief food
- Purchasing food on credit
- Swapping to cheaper foods across all the three main livelihoods, which is an indication of a serious food shortages at household level.
- Agro /pastoral livelihood zone reporting increasing sales of firewood/charcoal to urban dwellers.

#### **6.0 Recommendations to KFSSG and other DAs**

- GoK relief food should be consistent and increase the targeting to support needy households who are not targeted under EMOP.
  - Re-targeting of EMOP/WFP which was conducted by Kenya Red Cross society should be verified by DSG and KFSSG.
  - Afforestation should be embraced in urban settlement of (Loiyangalani, North Horr, Maikona locations and other lowland areas, where there is plenty of water.
  - Equitable distribution of resources for community based natural resources and interventions for improvement of food security and income generating activities.
  - Proliferation of illegal arms should be contained to check tribal clashes and livestock raids which have ruined the development of the vulnerable communities in Larger Marsabit district.
- Action- WFP, KFSSG, ALRMPII and other DAs***
- Continuous disease surveillance should be emphasized in order to contain disease outbreaks especially CCBP, CCPP and other wet dry season infections.
  - Improve sanitation especially in diarrhea and vomiting prone areas.
  - Provision of mosquito nets and medication for treatment of wet season infections such as pneumonia, URTIs and malaria.