

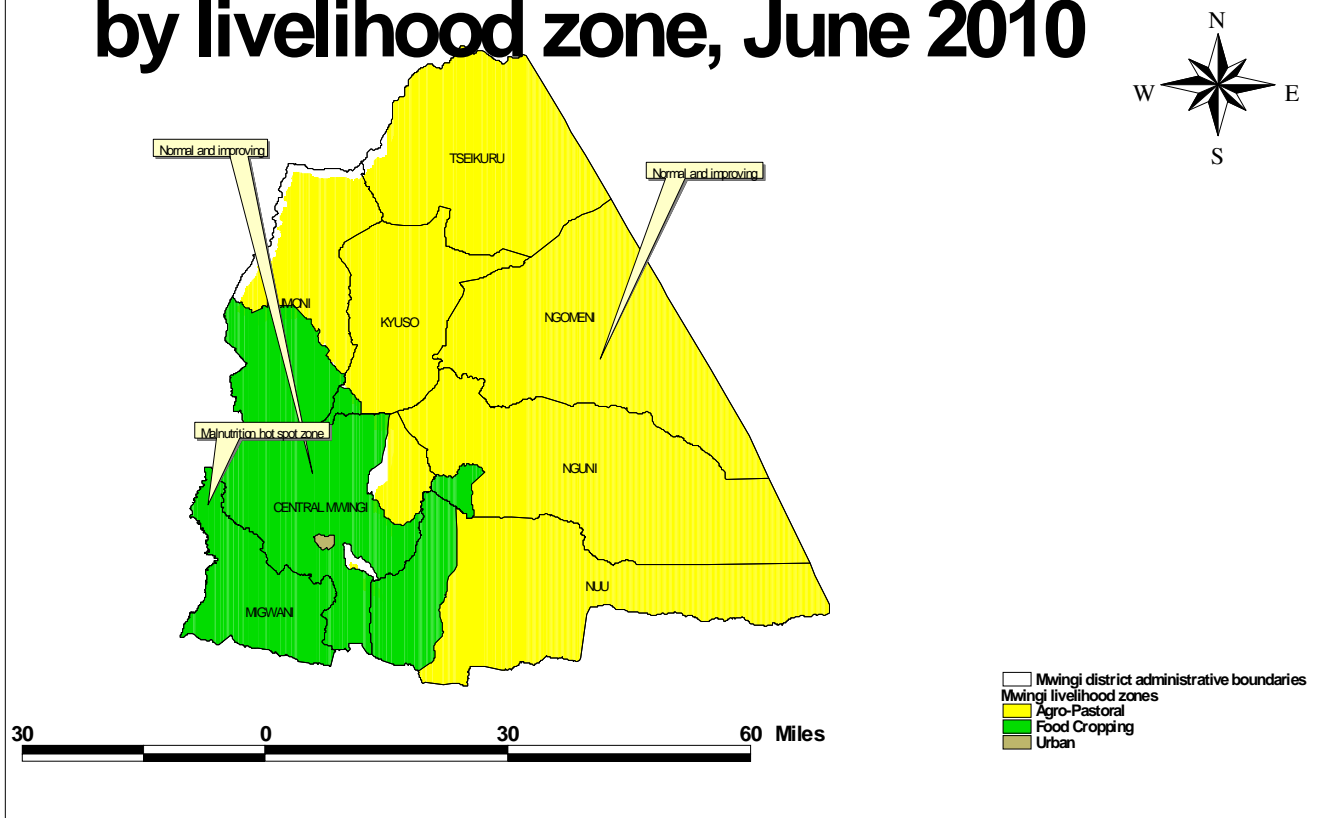


**OFFICE OF THE PRIME MINISTER
MINISTRY OF STATE FOR THE DEVELOPMENT OF NORTHERN KENYA AND OTHER ARID LANDS
ARID LANDS RESOURCE MANAGEMENT PROJECT II**

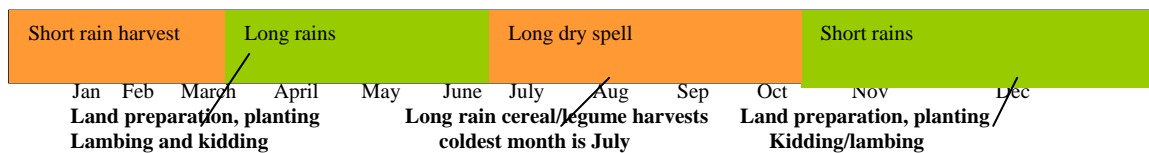
DROUGHT MONITORING BULLETIN, JUNE 2010

Mwingi District

Drought status for Mwingi district by livelihood zone, June 2010



Seasonal calendar



Situation overview

- No rains were received in the month of June.
- Cases of aflatoxin were reported in the district and some maize was impounded by Authorities after testing positive for aflatoxin contamination.
- Livestock prices were on an upward trend while cereal prices are relatively low compared to long term prices.
- Malnutrition cases were low compared to long term means.
- Water access and availability was fair.
- Households started harvesting their crops.
- Milk production improved significantly compared with the last 2-3 months.

Ongoing interventions

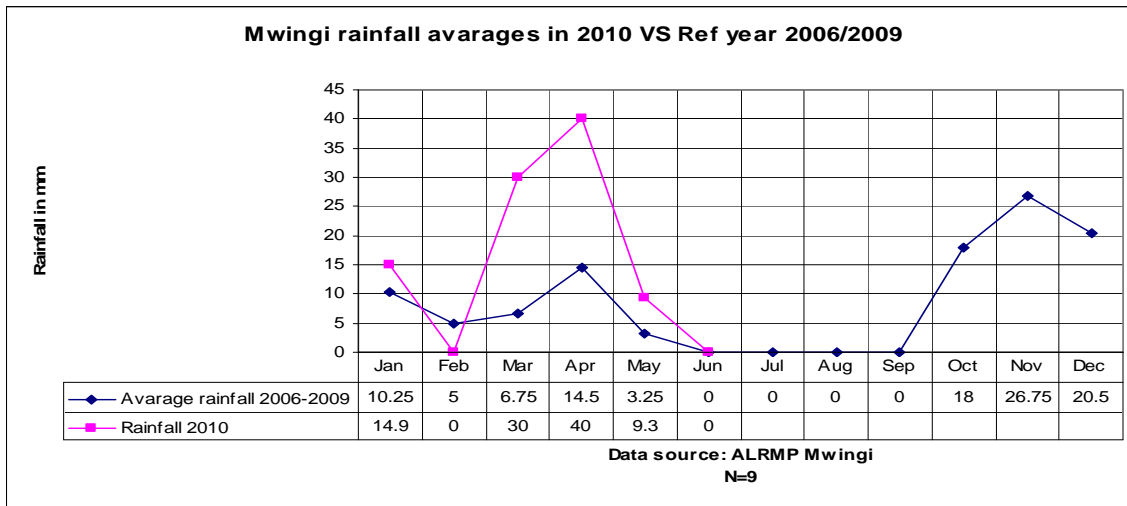
- The Veterinary department in collaboration with Vet Aid is conducting vaccination campaigns against CCPP disease in goats. The department is also carrying out disease surveillance in the district.
- Surveillance on aflatoxin in the district was ongoing. Public health, Agriculture department and Arid Lands office are involved in this campaign.
- Supplementary feeding programme was going on in selected health facilities in the district.

Recommendations to DSG and KFSM

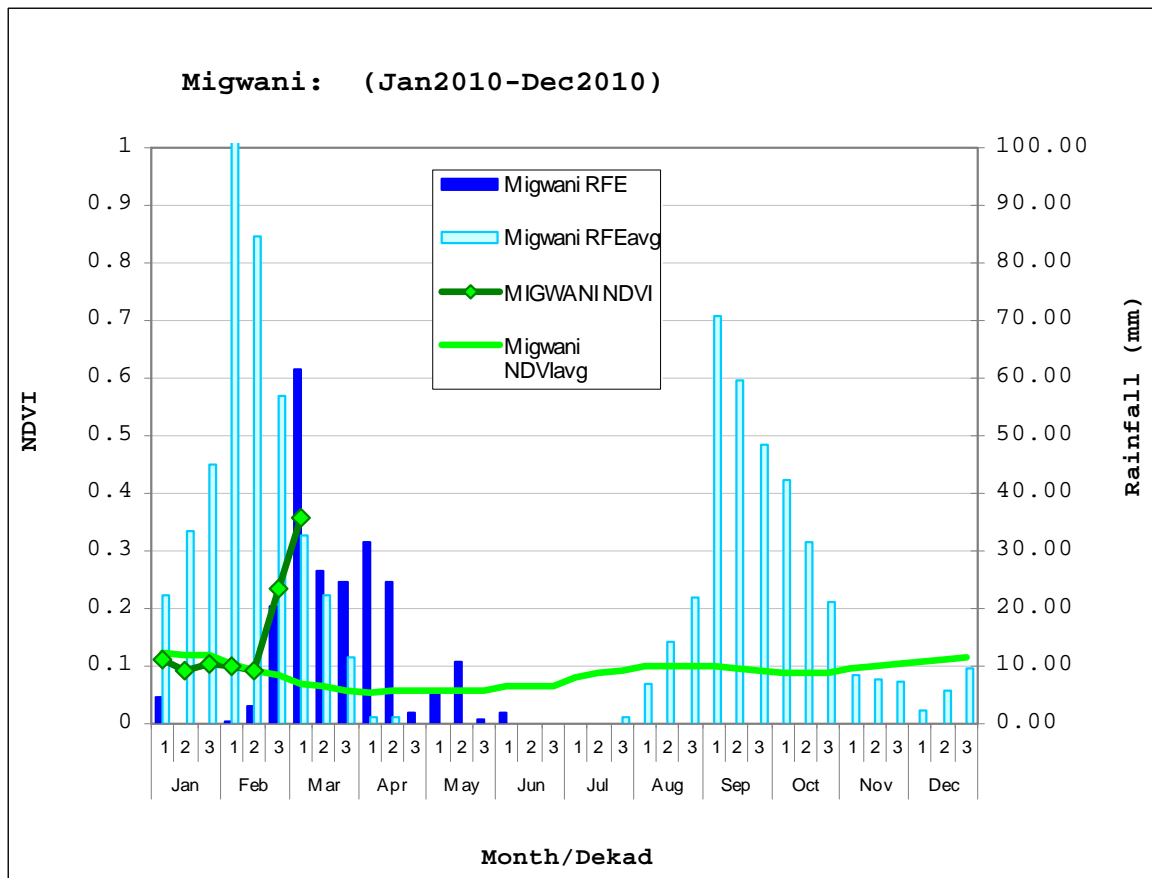
- Surveillance on food stocks in the district should be intensified to detect and prevent food contamination from aflatoxin.
- As farmers harvest their crops, there is a need to sensitize them on proper post harvest handling procedures of food in order to minimize cases of post harvest losses.
- There is a need to do further investigation in Thaana Nzau area to find out the reasons for the high causes of malnutrition in the area.

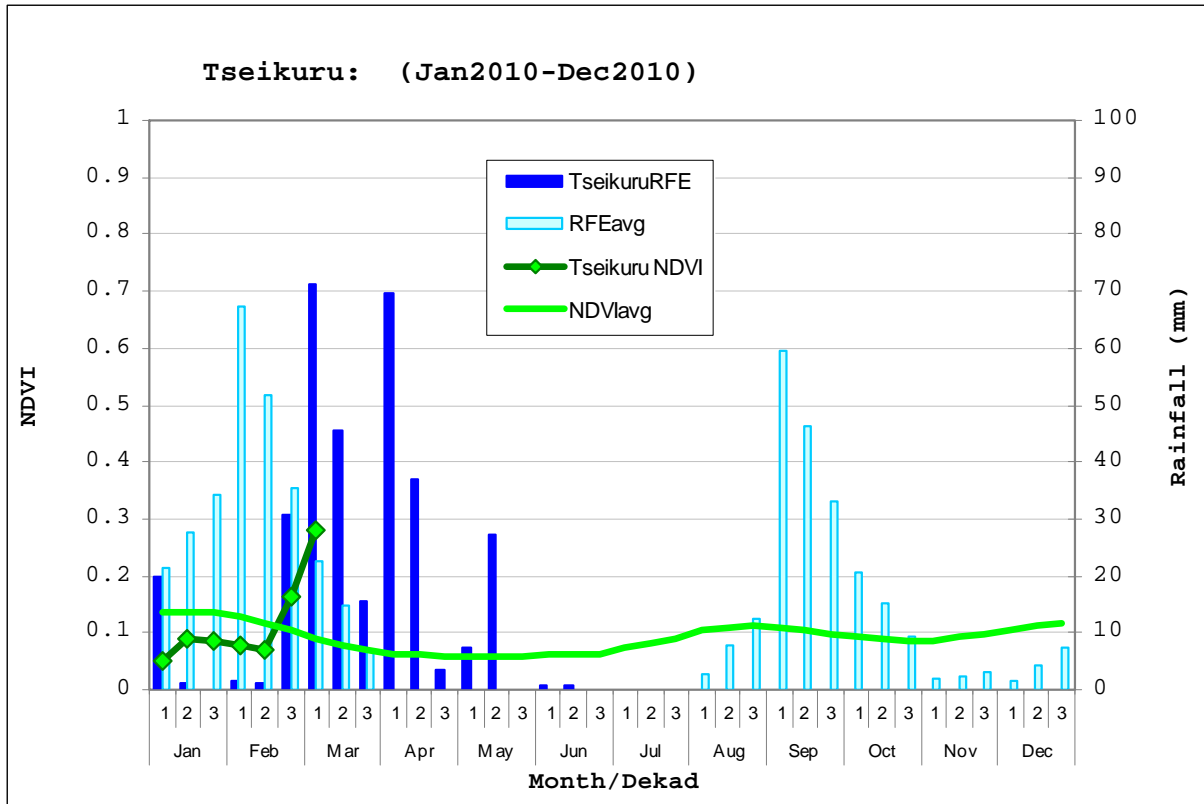
1.0 Environmental indicators

1.1 Rainfall



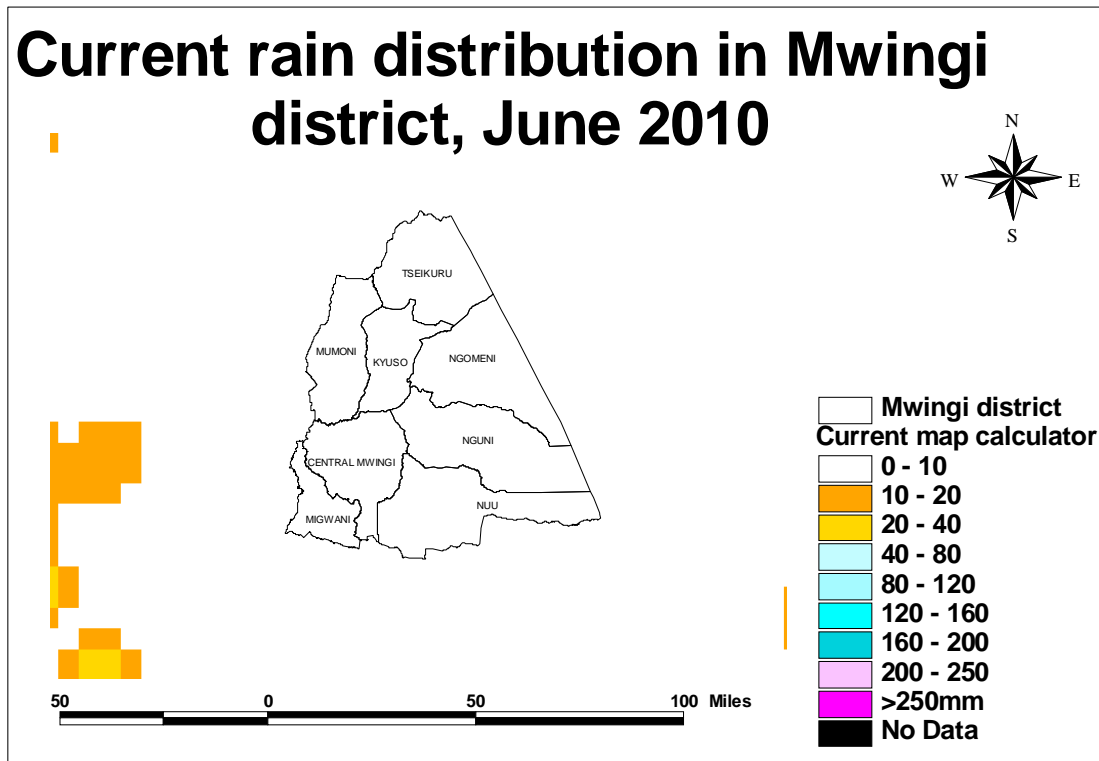
- There were no rains received during the month. The weather was cold and cloudy most of the time.
- The following rainfall estimate images (RFA) shows that there was virtually no precipitation experienced in the month of June.

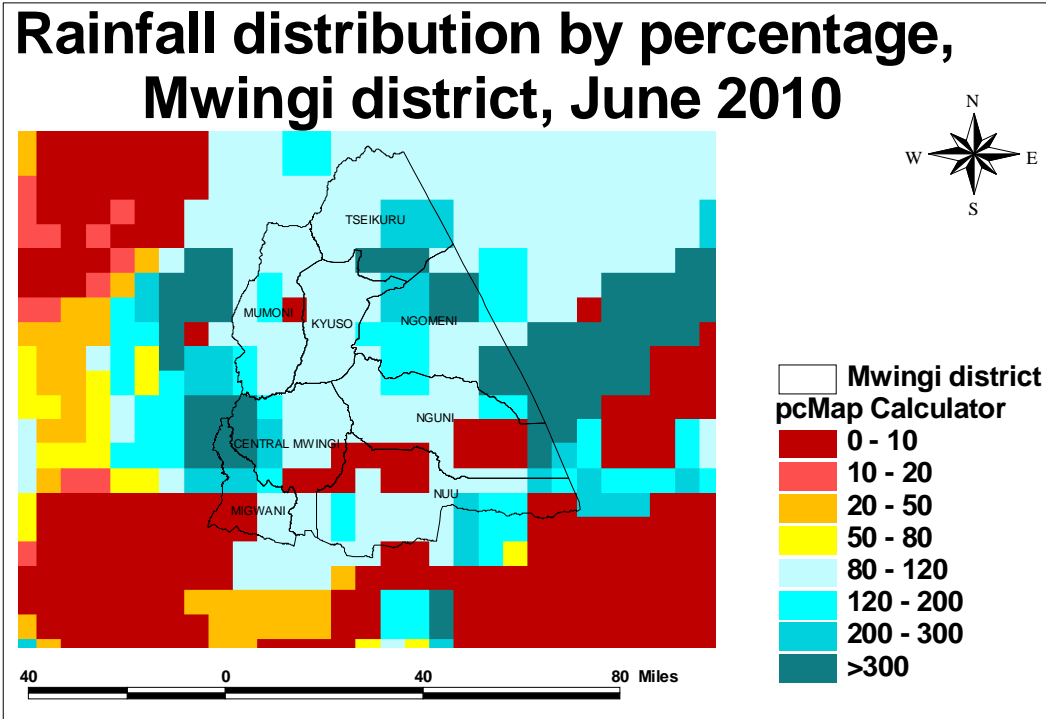
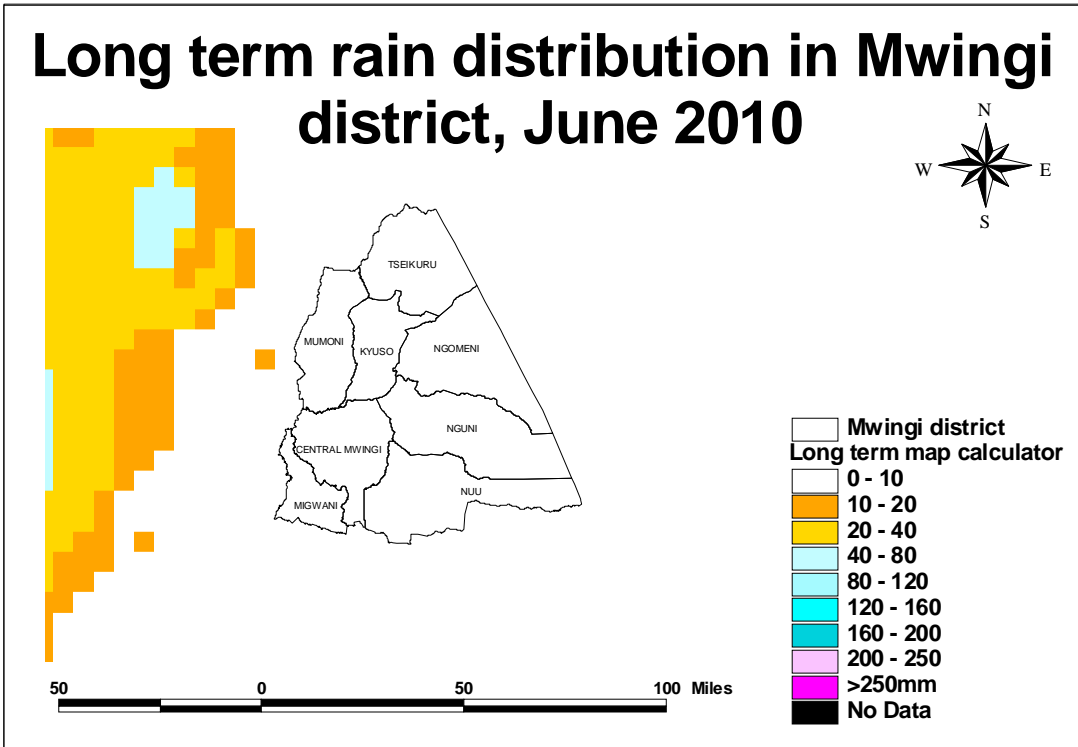




Normalized difference vegetation index (NDVI) and rainfall estimates (RFA) for Tseikuru and Migwani districts (Agro pastoral and mixed farming livelihood zones respectively) for June 2010. NB: NDVI values from March 2010 not available.

Current rain distribution in Mwingi district, June 2010



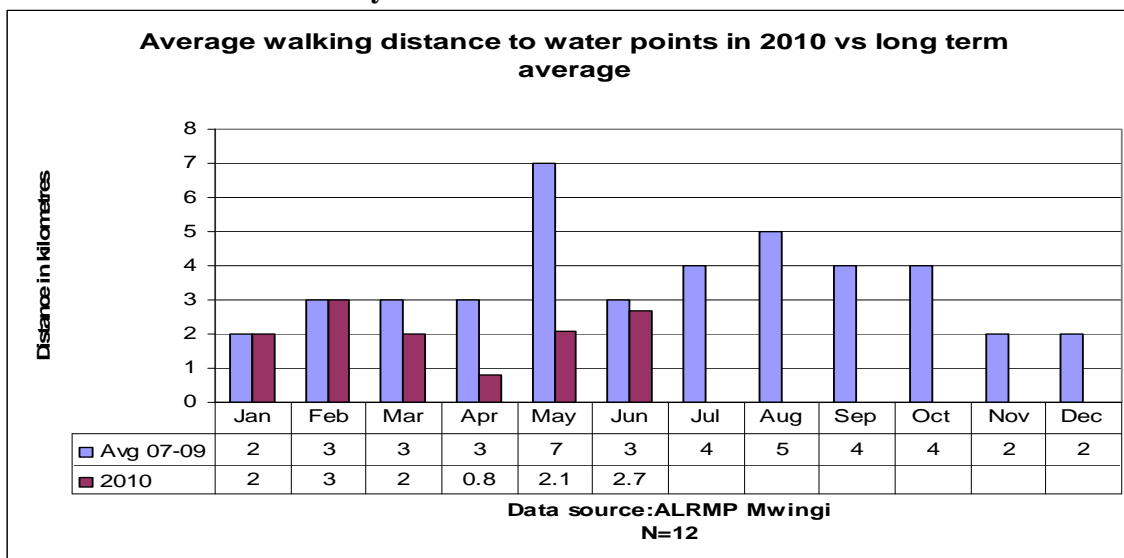


The above Mwingi district maps shows a comparison of current vs. long term rainfall distribution for the month of June, 2010

1.2 Condition of natural vegetation and pasture

The quantity of natural vegetation is good. There is plenty of grasses and browse that should be able to sustain our livestock for the next two to three months. The quality of natural vegetation is fair though some of the vegetation has started changing colour as they dry up due to lack of rains.

1.3 Water sources and availability



The average walking distances to water sources rose slightly from 2.1km last month to 2.7km currently. With the cessation of long term rains, communities have depleted water sources nearer to them and have started moving further away to fetch water.

1.4 Emerging issues

1.4.1 Aflatoxin scare

The district has been placed on a very high alert on aflatoxin issues. Already, over 500 bags of maize were detected to be contaminated with aflatoxin and have been impounded by Authorities from the affected traders and households. Some of the maize is originating from outside the district while the rest is from households with poor storage facilities. Central Mwingi and Nuu divisions are the most affected as of now.

1.5 Implication on food security

- The district is expected to get fair harvest of crops resulting from long rains season. However, the presence of aflatoxins might jeopardise this gain if contaminated maize find its way into the local markets. Our biggest concern is the maize that is being traded by merchants.
- Water access and availability is fair for now but we anticipate shortages as from next month when traditional water sources start to dry up.

2.0 Rural economy indicators (food availability)

2.1 Livestock production

2.1.1 Livestock body condition

The livestock body condition is good for all the livestock species in the district. This is being attributed by the presence of improved pastures and water availability.

2.1.2 Livestock diseases

There was no outbreak of any notifiable livestock disease in the district.

2.1.3 Milk production

Milk production has continued to improve with Mumoni district leading followed by Migwani and Tseikuru districts respectively. The improved production is as a result of improved pasture and water availability which in turn has led to better animal body condition.

2.2 Crop production

2.2.1 Timeliness and condition of various crop production activities

Most of the crops planted matured and dried up. Farmers are busy harvesting their crops on farms.

2.2.2 Pests and disease

Focus should be shifted to post harvest pests which are likely to invade the granaries and attack the cereals and legumes.

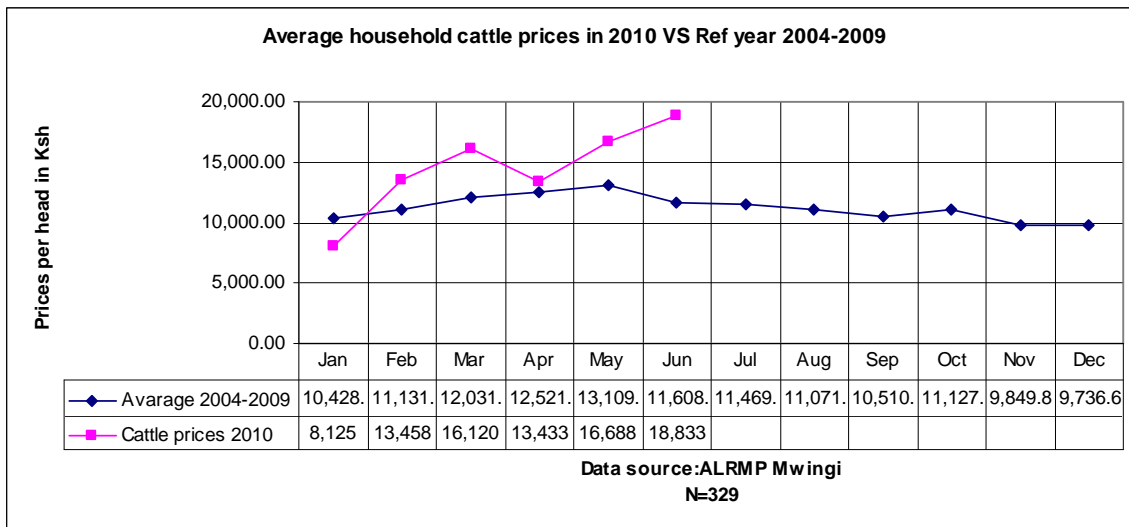
2.2.3 Implication on food security

The livestock sector is performing well currently. This is expected to significantly improve food security in the district. Improved milk productivity is expected to contribute positively on nutritional status of children. Households are expecting to get a fair harvest this season and further improve on food security.

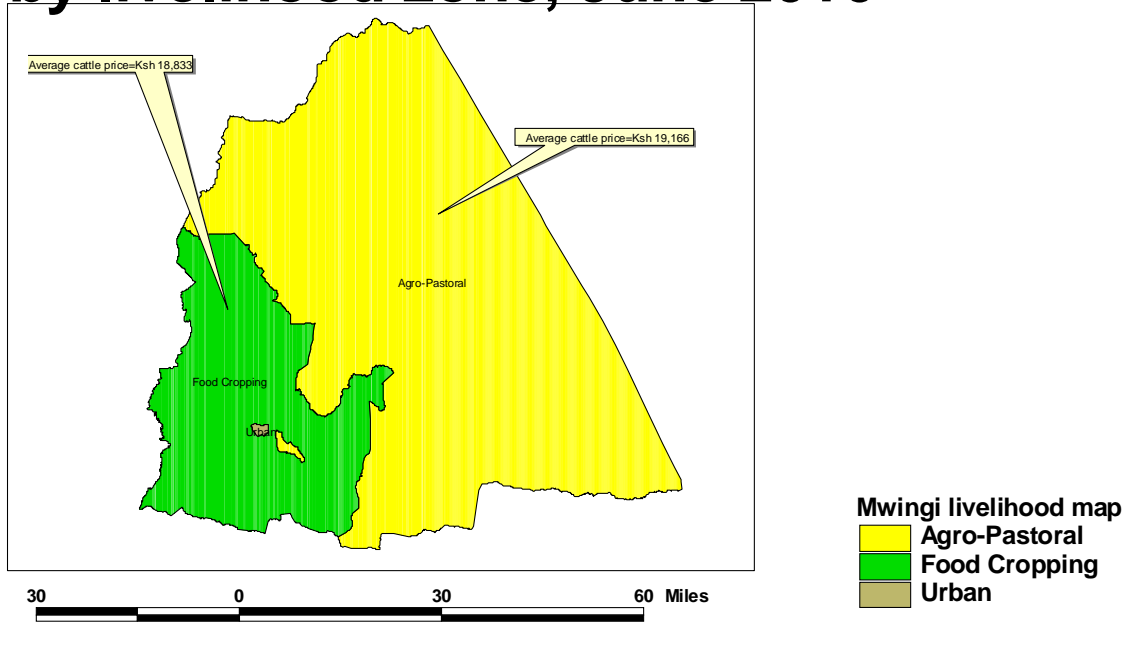
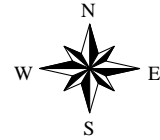
3.0 Access to food

3.1 Livestock marketing

3.1.1 Cattle prices

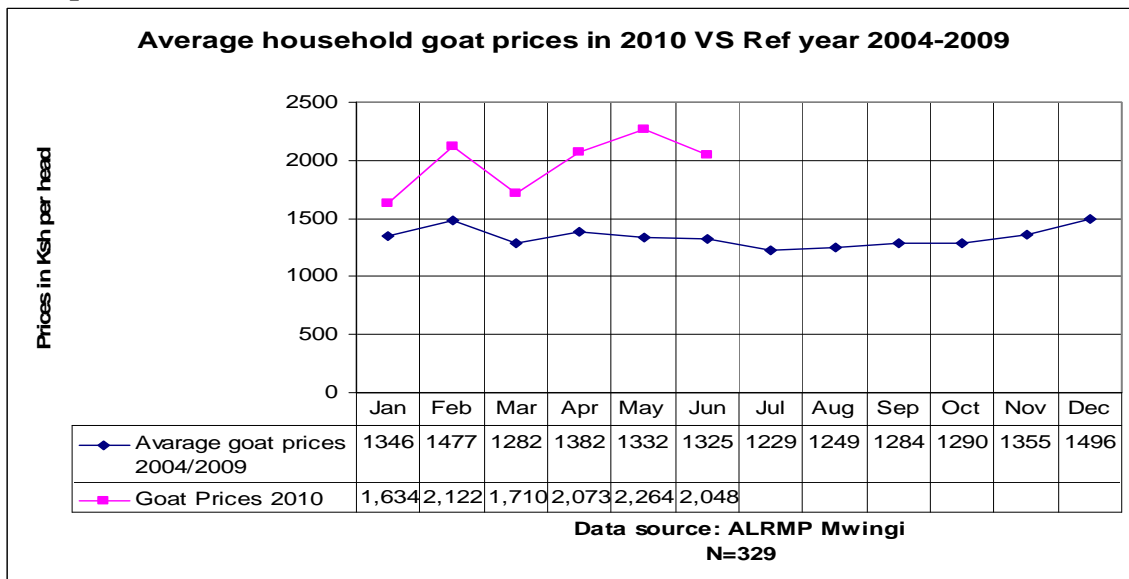


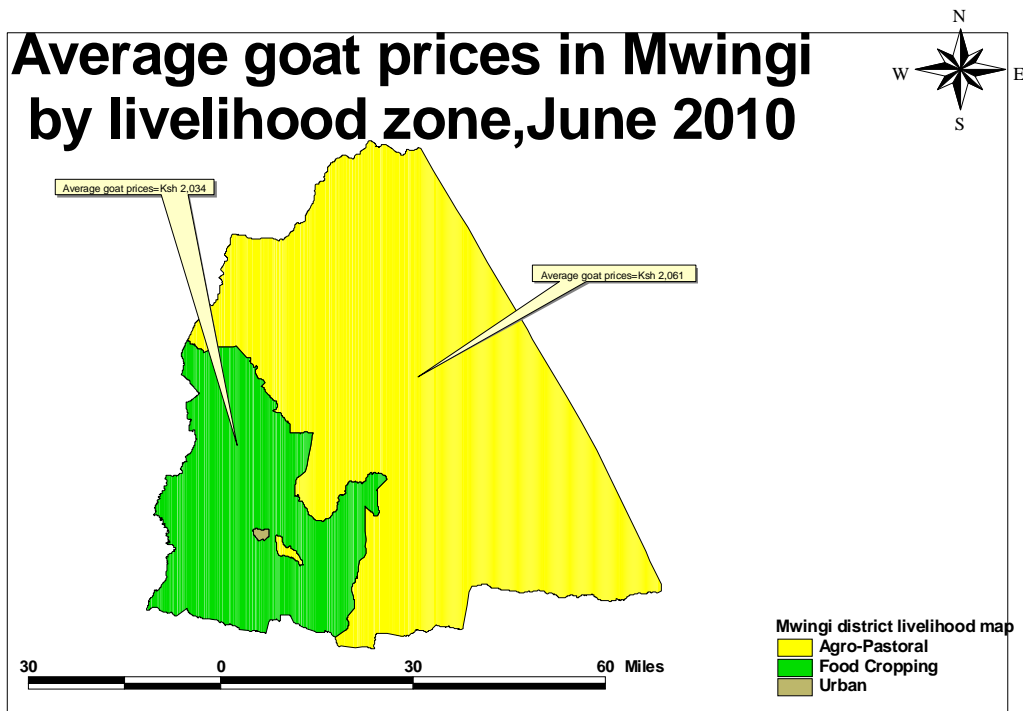
Average cattle prices in Mwingi by livelihood zone, June 2010



Average household cattle prices rose from Ksh 16,688 last month to Ksh 18,833 per head in June. The prices have improved significantly compared to the long term means. Mui division had the highest price at Ksh 24,000/head while Kyuso division had the lowest at Ksh 13,000/head. Generally the prices were better in agro pastoral mixed farming livelihood zone than in mixed farming livelihood zone. Improved body condition for cattle is contributing to increase in prices.

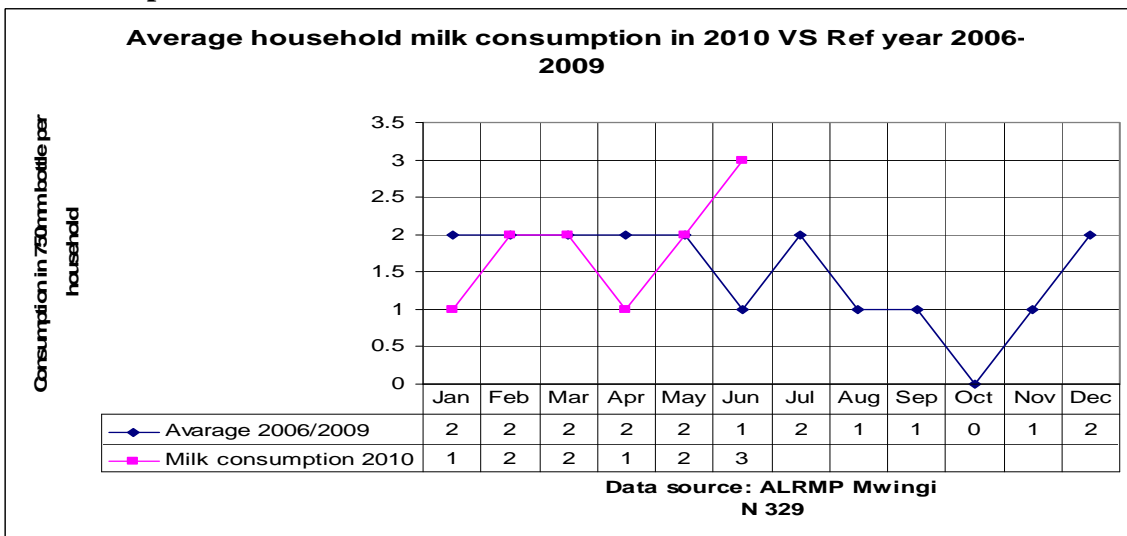
3.1.2 Goat prices





Average household goat prices dropped slightly from Ksh 2,264/head last month to Ksh 2,048/head in June. Compared with long term prices, this is an improvement.. The highest price was in Tseikuru region at Ksh 2,550/head while the lowest price was in Nguni division at Ksh 1,100/head.

3.2 Milk consumption

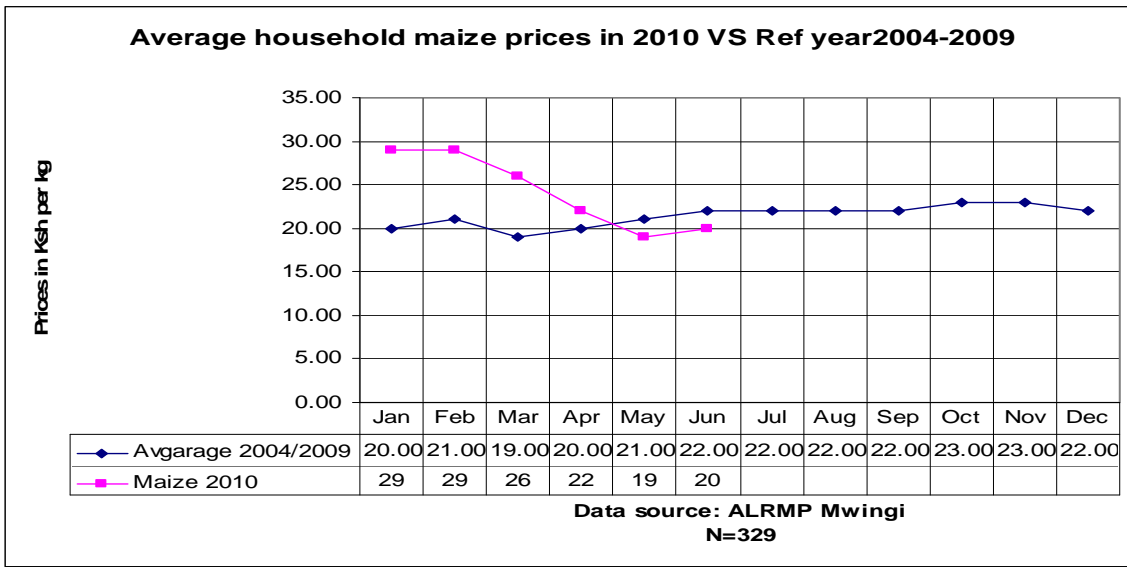


- Average household milk consumption has improved from two bottles last month to three bottles per household in June (750ml bottle). This is a remarkable improvement compared to the long term means.
- Increased milk productivity is influencing milk consumption positively. However, there are pockets in the district where consumption is still low. These include Kyuso. Mui and Nguni divisions.

3.3 Crop prices

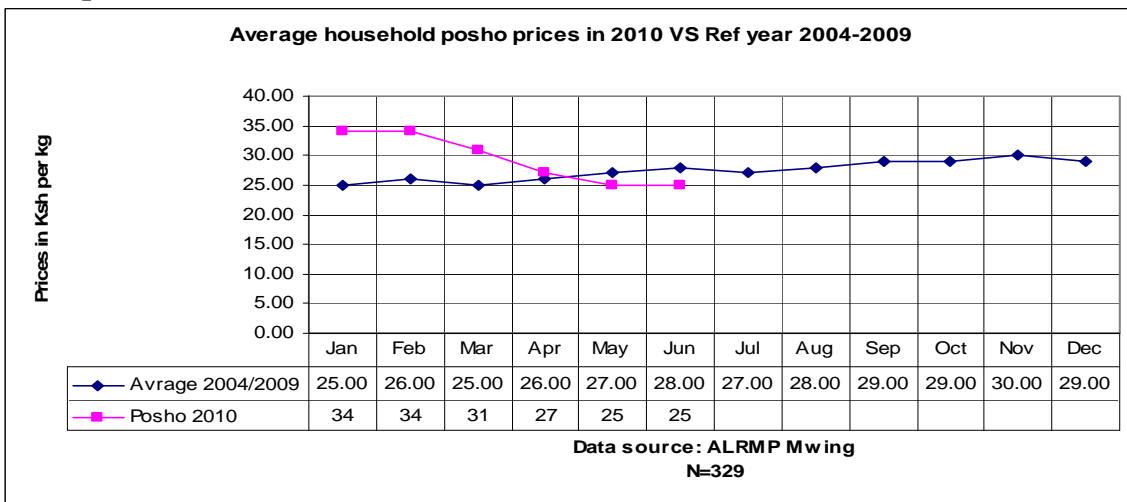
3.3.1

Maize prices



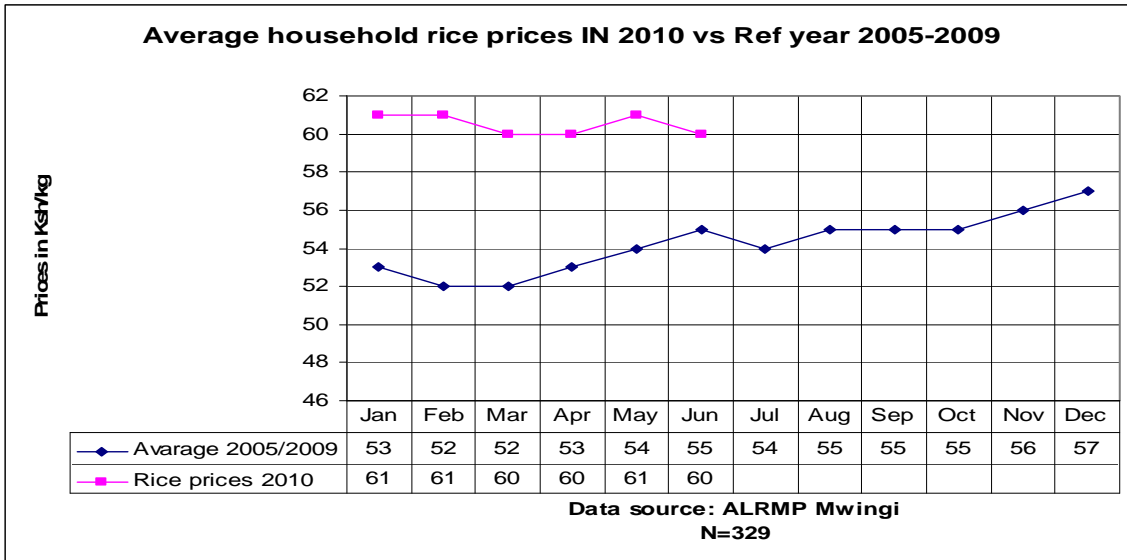
There was a slight increase in average household maize prices from Ksh 19/kg last month to Ksh 20/kg in June. The prices are still lower compared to the long term means. This has eased access to maize in local markets especially for livestock producers.

3.3.2 Posho prices



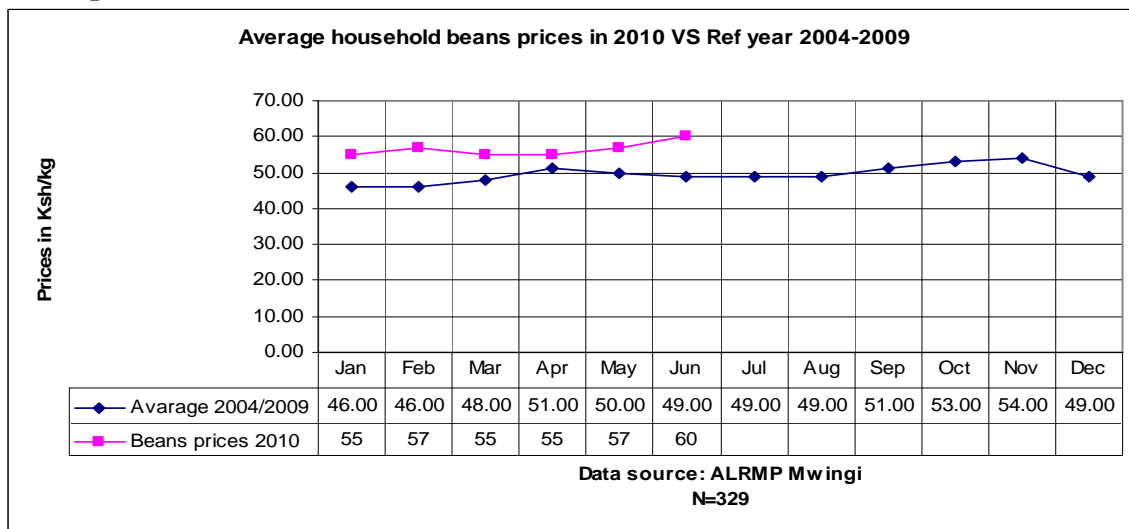
The average household posho prices remained the same at Ksh 25/kg compared to last month. There wasn't any significant change in maize prices that would have affected posho prices.

3.3.2 Rice prices



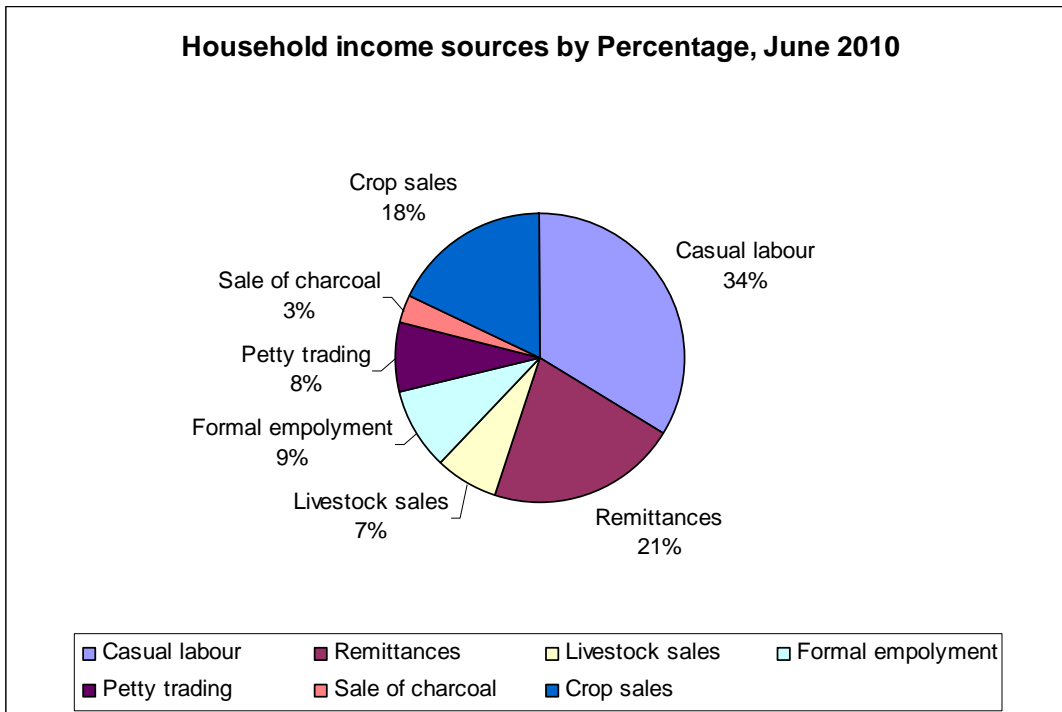
There was a slight reduction on average household rice prices from Ksh 61/kg last month to Ksh 60/kg in June.

3.3.4 Beans prices



Average household beans prices rose from Ksh 57/kg last month to Ksh 60 in June. Lack of domestic production of the crop could be one of the factors that makes this crop relatively expensive compared to the long term means.

3.4 Income



3.4.1 Crop income

The proportion of households selling crops has rose to 18% compared to last month’s 3%. This can be attributed to the ongoing crop harvest especially within the marginal mixed farming zone. Green grams are the most traded commodity.

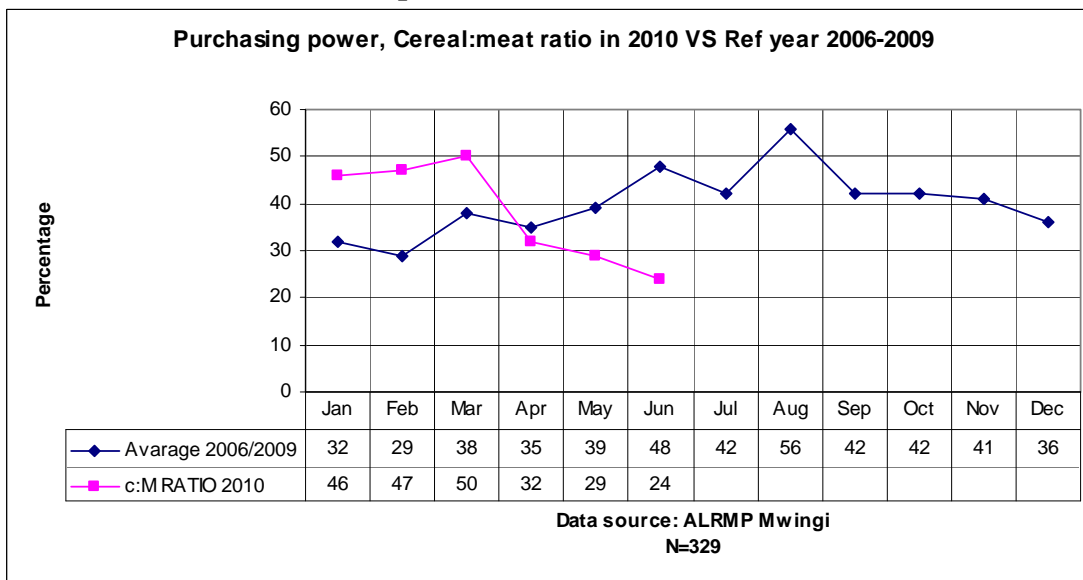
3.4.2 Livestock income

The proportion of households selling livestock remained the same at 7% compared to last month.

3.4.3 Other sources of income

Casual labour remained the main source of income at 34% followed by remittances at 21%.

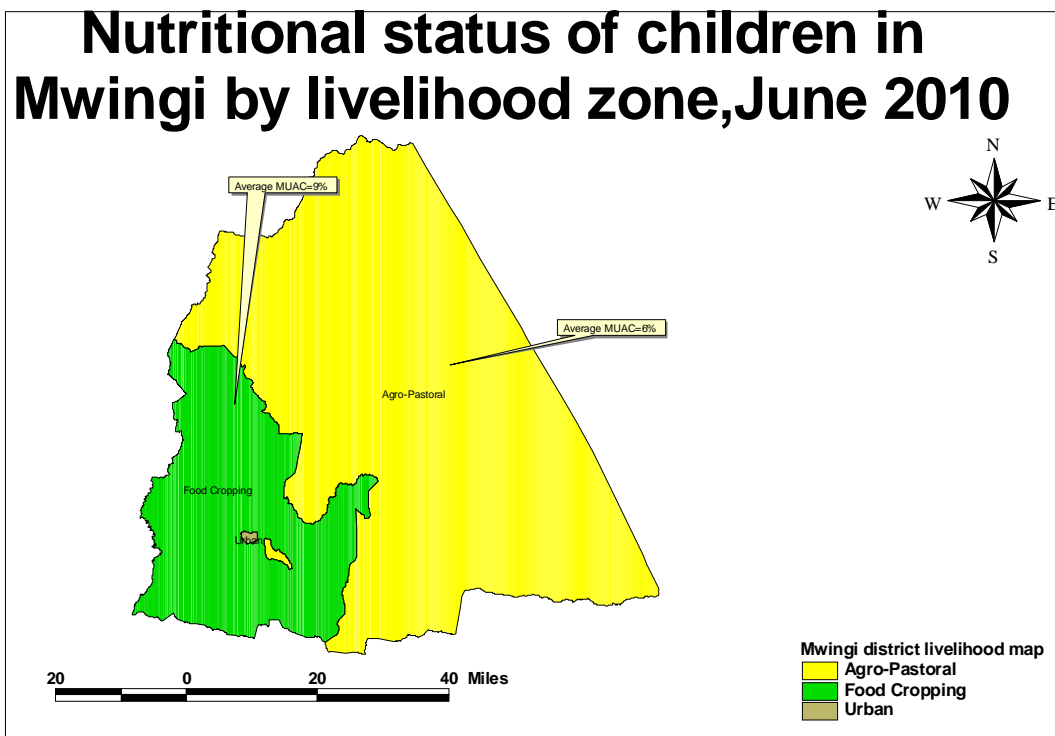
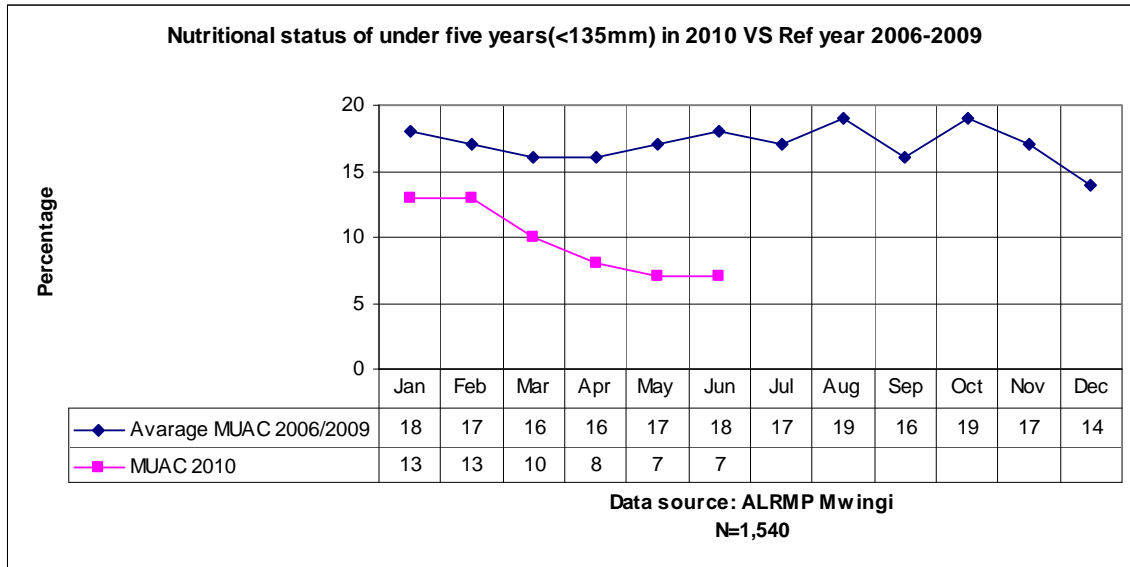
3.5 Terms of trade (Cereal: Meat price ratio)



The terms of trade on cereals to meat ratio dropped from 29% last month to 24% in June. Livestock prices have been increasing while cereal prices are on a downward trend. This ratio favours livestock keepers within Agro pastoral livelihood zones who relies more on livestock sales for a living.

4.0 Human welfare indicators

4.1 Nutrition status



The percentage of children at risk of malnutrition remained the same at 7% compared to last month. This is low compared with the long term means. On overall, there is improved food security situation in the district which is impacting positively on nutrition status of children.

However, areas around Thaana Nzau region in Migwani district are still posting higher rates of malnutrition at 27% and needs further investigations to find out the causes.

4.2 Human health

There was no outbreak of human disease in the district.

5.0 Current interventions

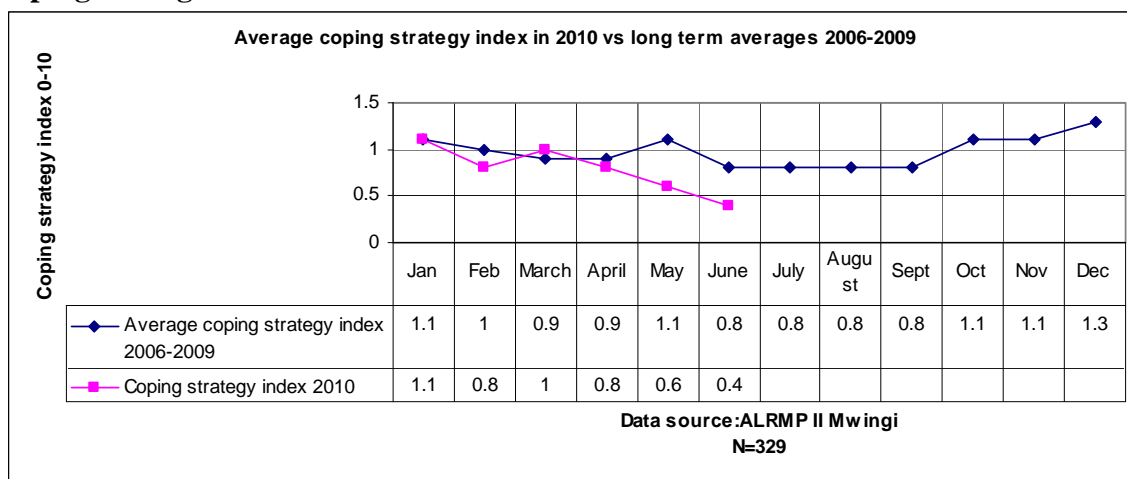
5.1 Non-food interventions

- The Veterinary department in collaboration with Vet Aid is conducting vaccination campaigns against CCPP disease in goats. The department is also carrying out disease surveillance in the district.
- Surveillance on aflatoxin in the district is ongoing. Public health, Agriculture department and Arid Lands office are involved in this campaign.

5.2 Food aid

Supplementary feeding programme is going on in selected health facilities in the district.

5.3 Coping strategies



The average district coping strategy dropped from 0.6 last month to 0.4 in June. The drop is being influenced by the overall improving food security situation in the district.

6.0 Recommendations

- Surveillance on food stocks in the district should be intensified so as to detect and prevent food contamination from aflatoxin.
- As farmers harvest their crops, there is a need to sensitize them on proper post harvest handling procedures of food in order to minimise cases of post harvest losses.
- There is a need to do further investigation in Thaana Nzau area to find out the reasons for the high causes of malnutrition in the area.